

FOR LEASE

5500 MONUMENT AVENUE
(HENRICO COUNTY) RICHMOND, VA 23226

125 YEARS SERVING RICHMOND

POLLARD & BAGBY
REAL ESTATE



DESCRIPTION

Located right off of Monument Avenue between Libbie Ave and Willow Lawn Drive. This centrally located, single-story freestanding office/medical complex provides entirely ground floor access directly off the parking lot, visibility, and ease of accessibility from the City of Richmond and Henrico County surrounding neighborhoods.

PROPERTY FEATURES

- 2nd gen dental office/medical space
- 1,061 square feet
- Rate: Contact Agent
- Full service lease
- 3 to 4 exam rooms
- Reception and private bathroom

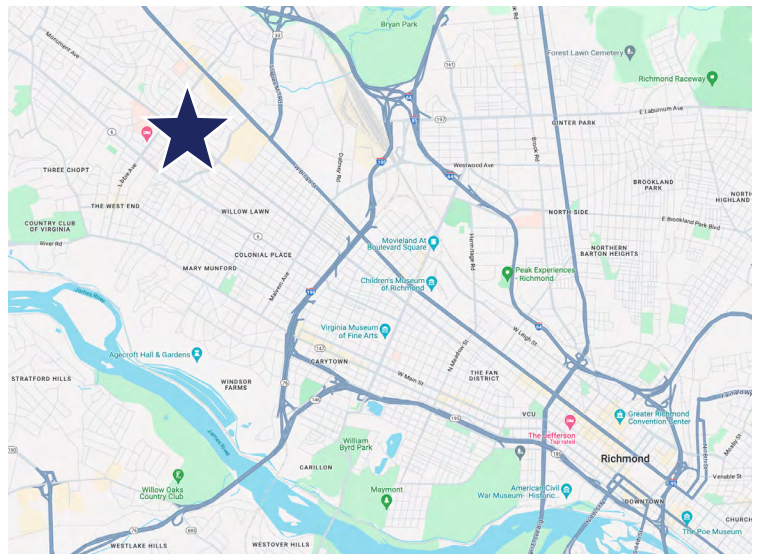
CONTACT INFORMATION

Pollard & Bagby, Inc.

Serving Richmond's Real Estate Market Since 1894
2 South 5th Street, P.O. Box 2488, Richmond, VA
O 804.643.9011 | F 804.782.9897 | www.pollardandbagby.com

G. Scott White, SIOR, CCIM

Senior Vice President - Commercial Sales & Leasing
C 804.221.3978 | scott.white@pollardandbagby.com



Lebs Breedon

Commercial Sales, Leasing & Property Management Associate
C 804.536.3933 | lebs.breedon@pollardandbagby.com

No warranty or representation is made as to the accuracy of the foregoing information. Terms of sale or lease and availability are subject to change or withdrawal without notice.

FOR LEASE

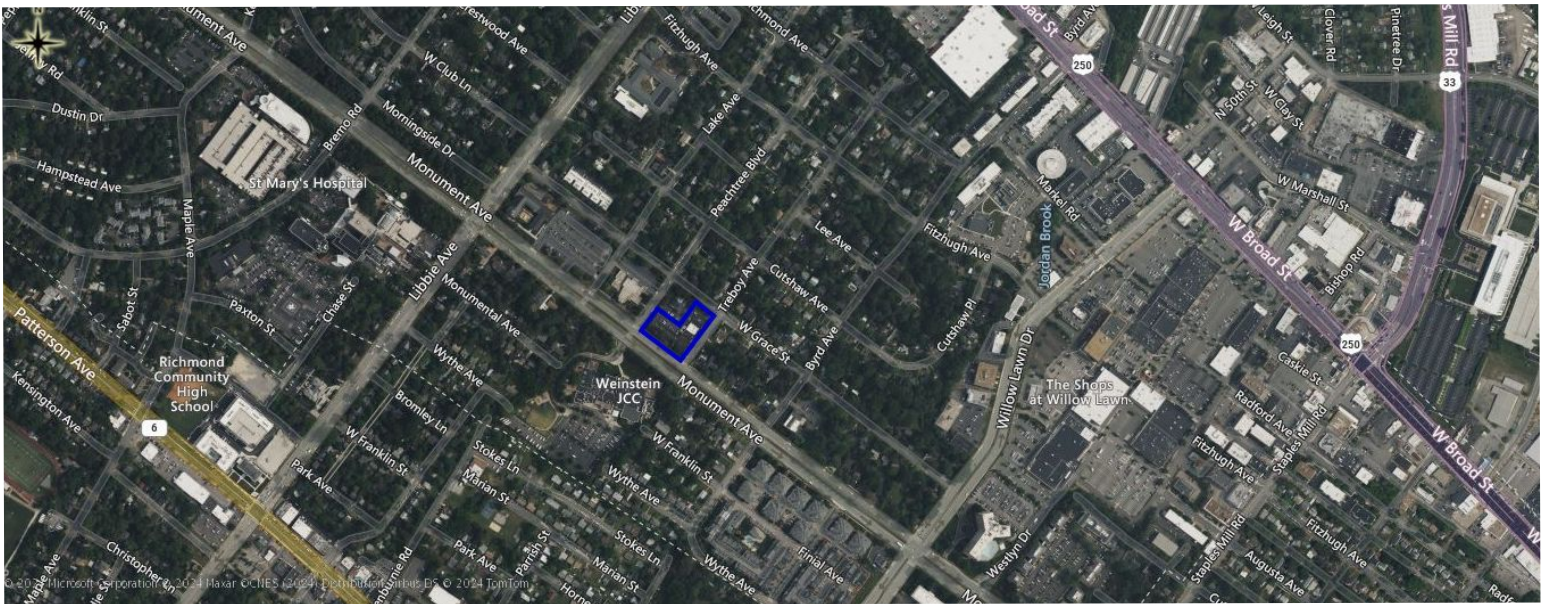
5500 MONUMENT AVENUE
(HENRICO COUNTY) RICHMOND, VA 23226

125 YEARS SERVING RICHMOND

POLLARD & BAGBY

REAL ESTATE

AERIAL MAPS



No warranty or representation is made as to the accuracy of the foregoing information. Terms of sale or lease and availability are subject to change or withdrawal without notice.