

FOR LEASE OR SALE

2221 Campostella Rd Chesapeake, VA



- Zoned B-1
- Ideal for restaurant, convenience store, auto parts, or bank
- Convenient to Greenbrier, Battlefield & Military Highway corridors
- Traffic Count: Providence Road - 16,000 vpd
Campostella Road - 14,000 vpd
- Adjacent 0.27 acres for sale
- Holly Point Section
- Total of ± 1.63 acres

Demographics (2016)

	1 Mile	3 Miles	5 Miles
Population	13,120	83,032	250,770
Households	5,431	32,090	95,177
Ave. HH Inc.	\$55,186	\$56,880	\$64,426

CONTACT:

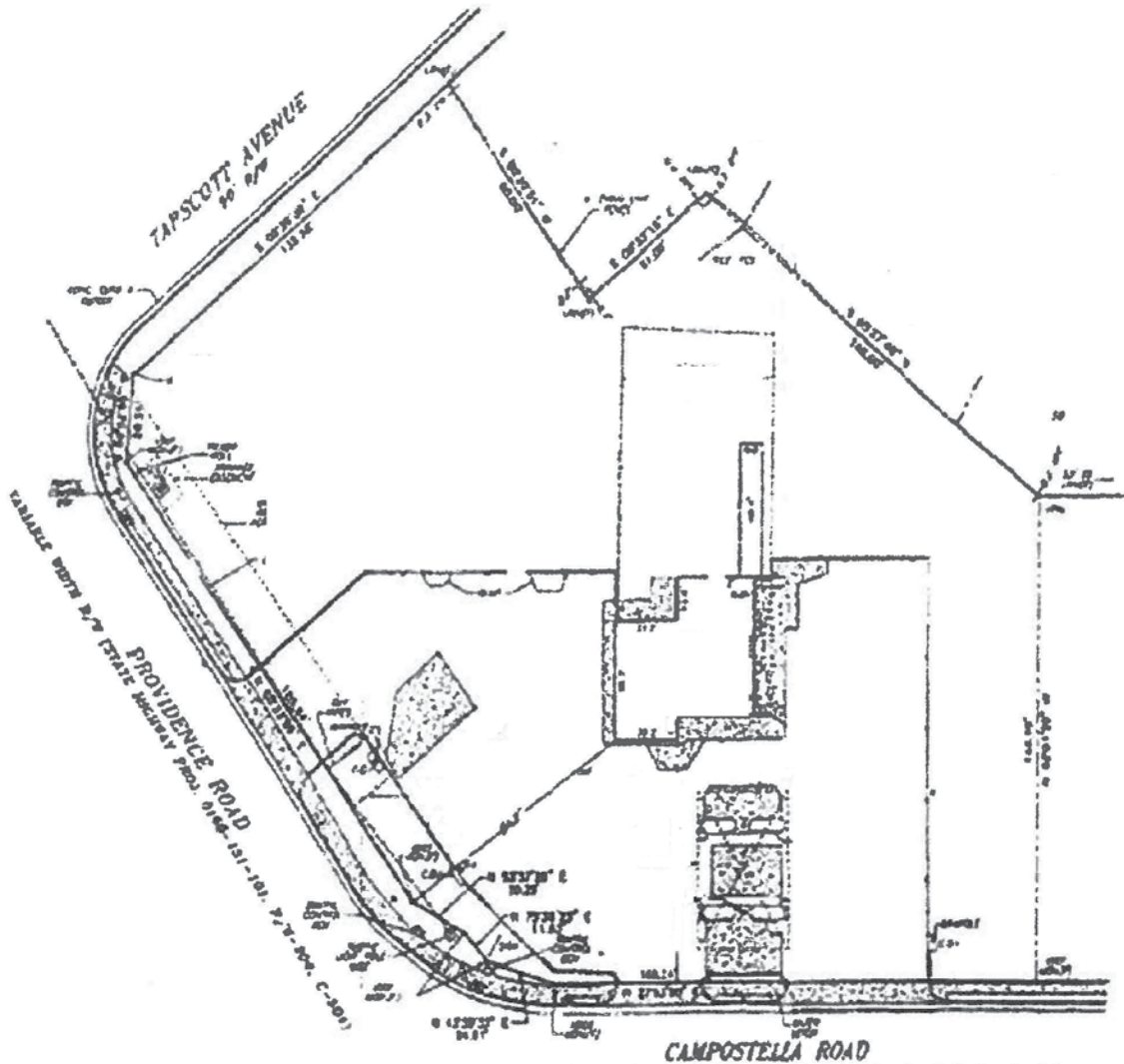
LINDSAY BILISOLY
(757) 640-8234
lindsaybilisoly@harveylindsay.com

HARVEY LINDSAY
 COMMERCIAL REAL ESTATE

A Tradition of Forward Thinking

FOR LEASE OR SALE

2221 Campostella Rd Chesapeake, VA



CONTACT:

LINDSAY BILISOLY

(757) 640-8234

lindsaybilisoly@harveylindsay.com

HARVEY LINDSAY

COMMERCIAL REAL ESTATE

A Tradition of Forward Thinking

The information contained herein has been obtained from sources believed to be reliable but is not warranted.
We cannot be responsible for errors, omissions, withdrawal, or prior lease or sale.