
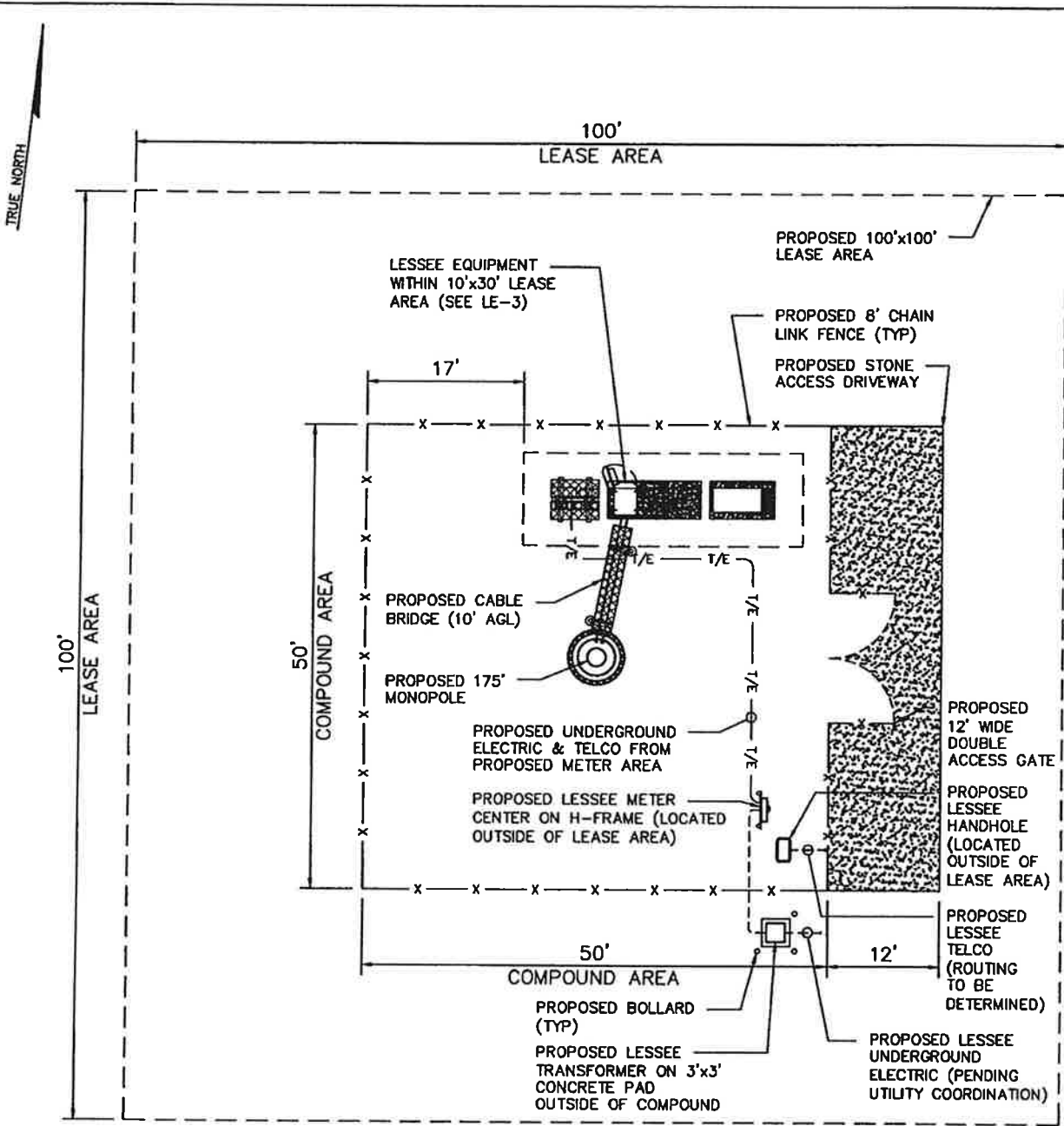


**PROPERTY PLAN**  
NOT TO SCALE

**NOTES:**

1. EXISTING FEATURES TAKEN FROM AERIAL PHOTOGRAPHY OBTAINED FROM NEARMAP AND LACKAWANNA COUNTY GIS MAPPING.
2. THIS DRAWING IS CONCEPTUAL AND HAS BEEN PREPARED TO PROMOTE DISCUSSIONS BETWEEN THE LESSOR AND THE LESSEE.
3. PROPOSED ACCESS DRIVE TO MATCH EXISTING GRADE.


 <p>1 W. BROAD STREET, SUITE 410 BETHLEHEM, PA 18018</p>	PROJECT: NEP FALLBROOK NW ROAD, VANDLING, PA 18421 BOROUGH OF VANDLING LACKAWANNA COUNTY, PENNSYLVANIA PARCEL ID.: 01701010001			DRAWING TITLE:  LE-1	
	DRAWN BY: R.P.J.	CHECKED BY: P.J.T.	SCALE: AS NOTED	DATE: 10/05/2022 Rev3	JOB NO.: 9499.092

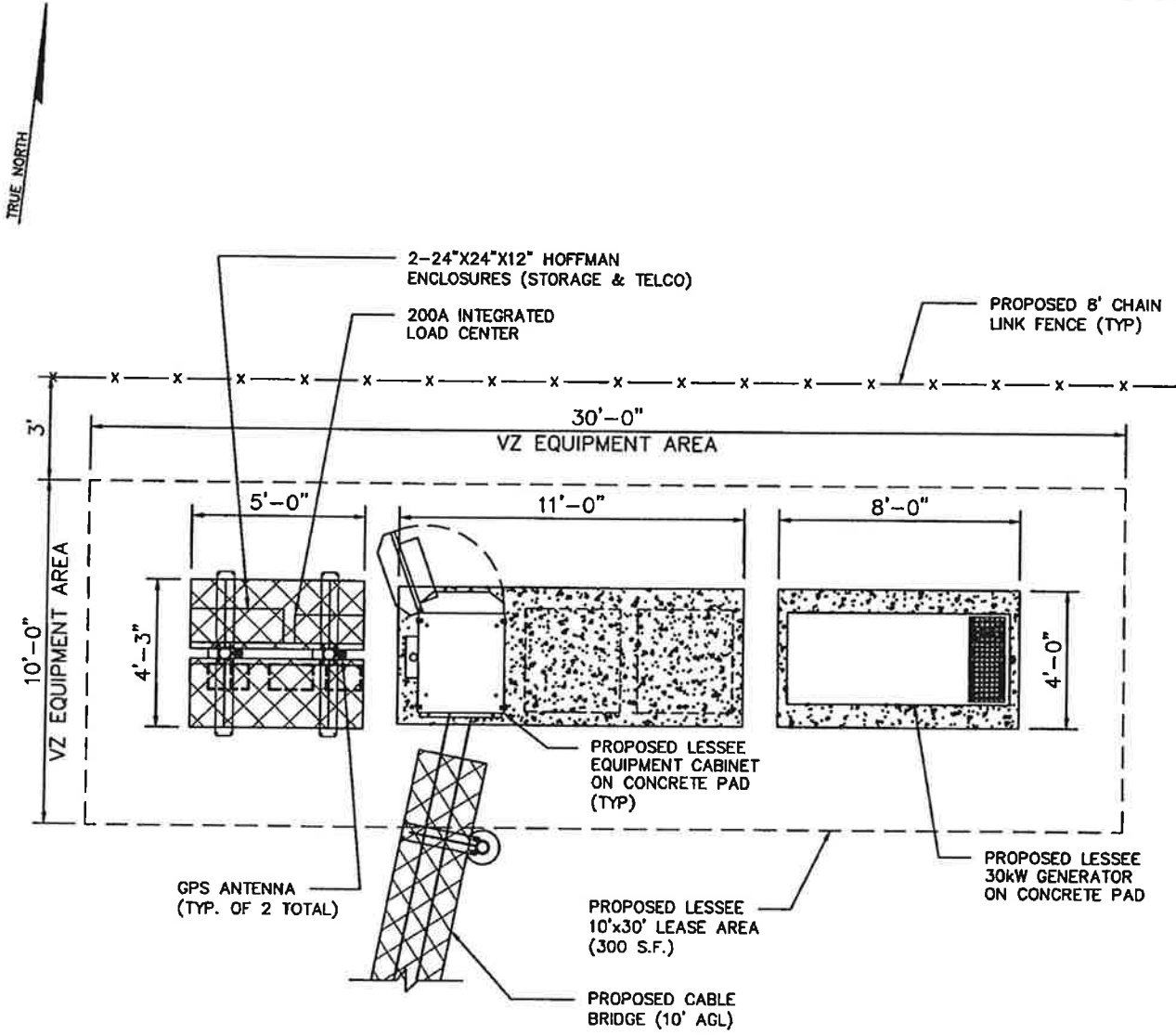


**DETAILED SITE PLAN**  
NOT TO SCALE

**NOTES:**

1. EXISTING FEATURES TAKEN FROM AERIAL PHOTOGRAPHY OBTAINED FROM NEARMAP AND LACKAWANNA COUNTY GIS MAPPING.
2. THIS DRAWING IS CONCEPTUAL AND HAS BEEN PREPARED TO PROMOTE DISCUSSIONS BETWEEN THE LESSOR AND THE LESSEE.
3. PROPOSED ACCESS DRIVE TO MATCH EXISTING GRADE.


 <p>FRENCH &amp; PARRELLO ASSOCIATES 1 W. BROAD STREET, SUITE 410 BETHLEHEM, PA 18018</p>	PROJECT: <b>NEP FALLBROOK</b> NW ROAD, VANDLING, PA 18421 BOROUGH OF VANDLING LACKAWANNA COUNTY, PENNSYLVANIA PARCEL ID.: 01701010001			DRAWING TITLE: <b>LE-2</b>	
	DRAWN BY: <b>R.P.J.</b>	CHECKED BY: <b>P.J.T.</b>	SCALE: <b>AS NOTED</b>	DATE: <b>10/05/2022 Rev3</b>	JOB NO.: <b>9499.092</b>

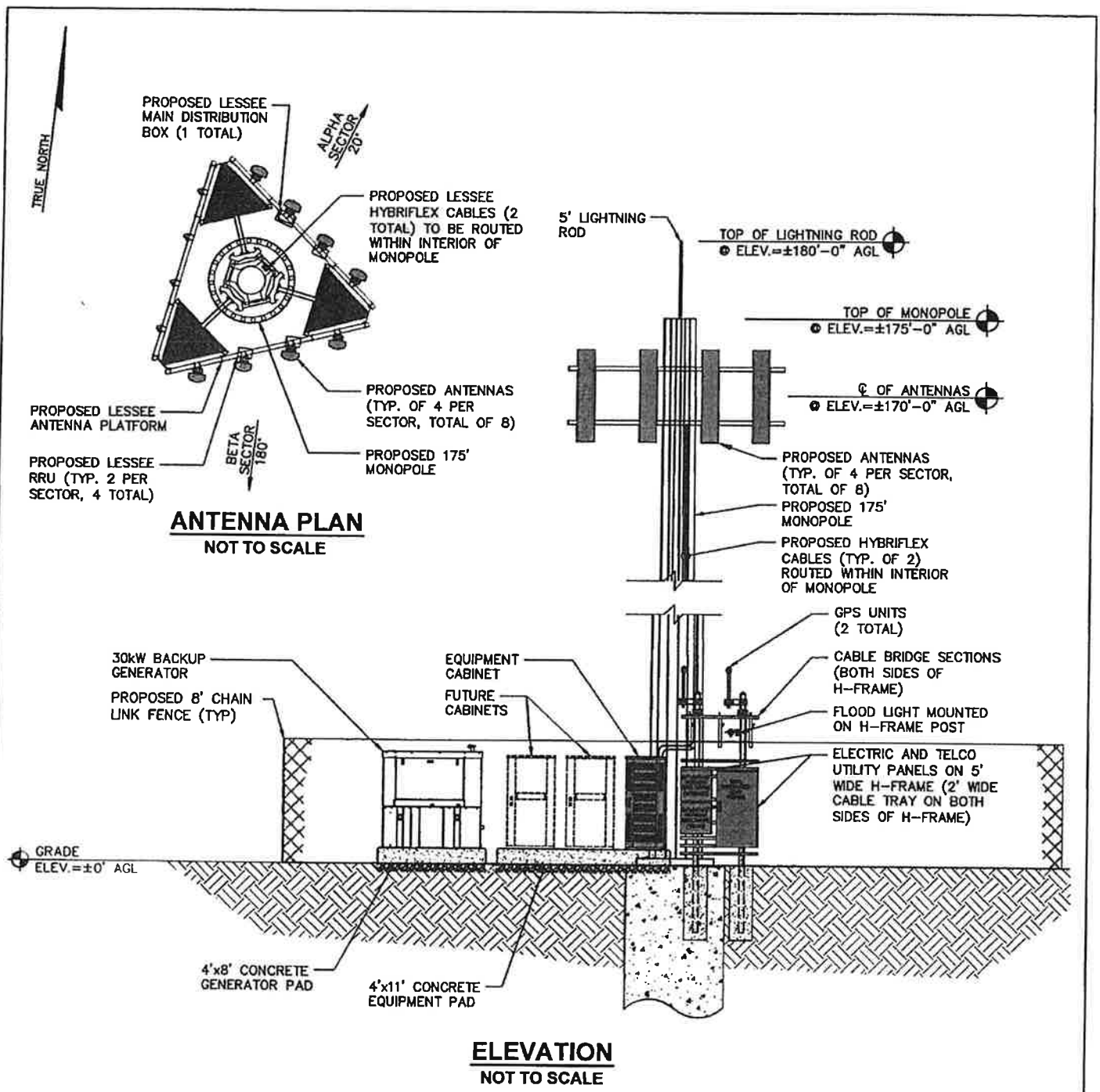


**DETAILED EQUIPMENT PLAN**  
± 1" = 5'

**NOTES:**

1. EXISTING FEATURES TAKEN FROM AERIAL PHOTOGRAPHY OBTAINED FROM NEARMAP AND LACKAWANNA COUNTY GIS MAPPING.
2. THIS DRAWING IS CONCEPTUAL AND HAS BEEN PREPARED TO PROMOTE DISCUSSIONS BETWEEN THE LESSOR AND THE LESSEE.
3. PROPOSED ACCESS DRIVE TO MATCH EXISTING GRADE.

 1 W. BROAD STREET, SUITE 410 BETHLEHEM, PA 18018	PROJECT: NEP FALLBROOK NW ROAD, VANDLING, PA 18421 BOROUGH OF VANDLING LACKAWANNA COUNTY, PENNSYLVANIA PARCEL ID.: 01701010001			DRAWING TITLE: LE-3	
	DRAWN BY: R.P.J.	CHECKED BY: P.J.T.	SCALE: AS NOTED	DATE: 10/05/2022 Rev3	JOB NO.: 9499.092




**ANTENNA PLAN**  
NOT TO SCALE

**ELEVATION**  
NOT TO SCALE

**NOTES:**

1. EXISTING FEATURES TAKEN FROM AERIAL PHOTOGRAPHY OBTAINED FROM NEARMAP AND LACKAWANNA COUNTY GIS MAPPING.
2. THIS DRAWING IS CONCEPTUAL AND HAS BEEN PREPARED TO PROMOTE DISCUSSIONS BETWEEN THE LESSOR AND THE LESSEE.
3. PROPOSED ACCESS DRIVE TO MATCH EXISTING GRADE.

 <p>FRENCH &amp; PARRELO ASSOCIATES 1 W. BROAD STREET, SUITE 410 BETHLEHEM, PA 18018</p>	PROJECT: <b>NEP FALLBROOK</b> NW ROAD, VANDLING, PA 18421 BOROUGH OF VANDLING LACKAWANNA COUNTY, PENNSYLVANIA PARCEL ID.: 01701010001		DRAWING TITLE:  <b>LE-4</b>
	DRAWN BY: <b>R.P.J.</b>	CHECKED BY: <b>P.J.T.</b>	SCALE: <b>AS NOTED</b>
		JOB NO.: <b>9499.092</b>	DRAWING NO.: <b>4 OF 4</b>