



Vacant Land - Big Bethel Road

1033-G Big Bethel Road, Hampton, VA 23666

RE/MAX



Carlyn Menser

RE/MAX Connect

100 Newsome Dr, Suite E, Yorktown, VA 23692

carlyn.menser@remax.net

(757) 879-9759



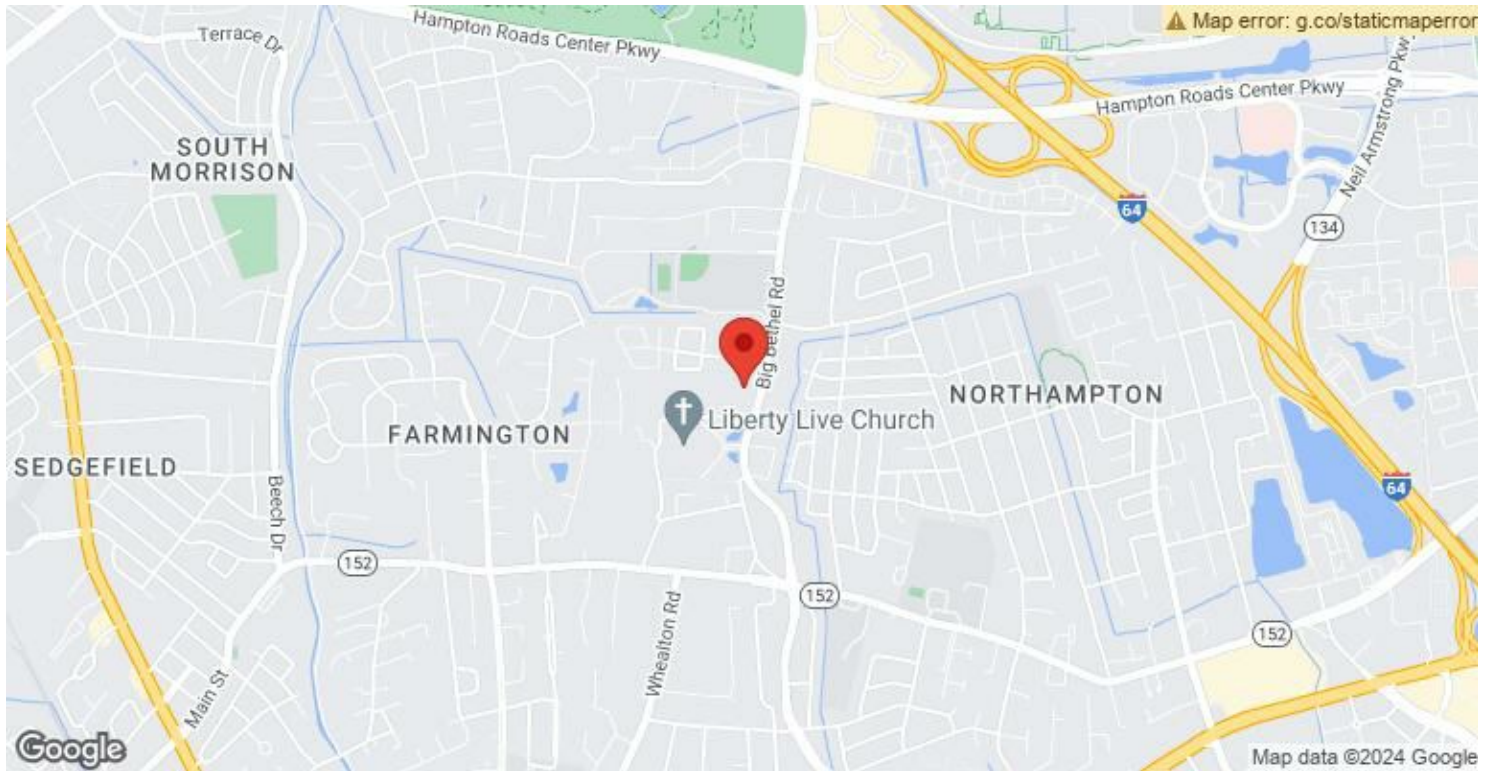
Vacant Land - Big Bethel Road

\$1,800,000

Imagine the possibilities! This expansive 14-acre commercial land on Big Bethel Road in Hampton, Virginia is the perfect canvas for your next venture. Call to schedule today!...

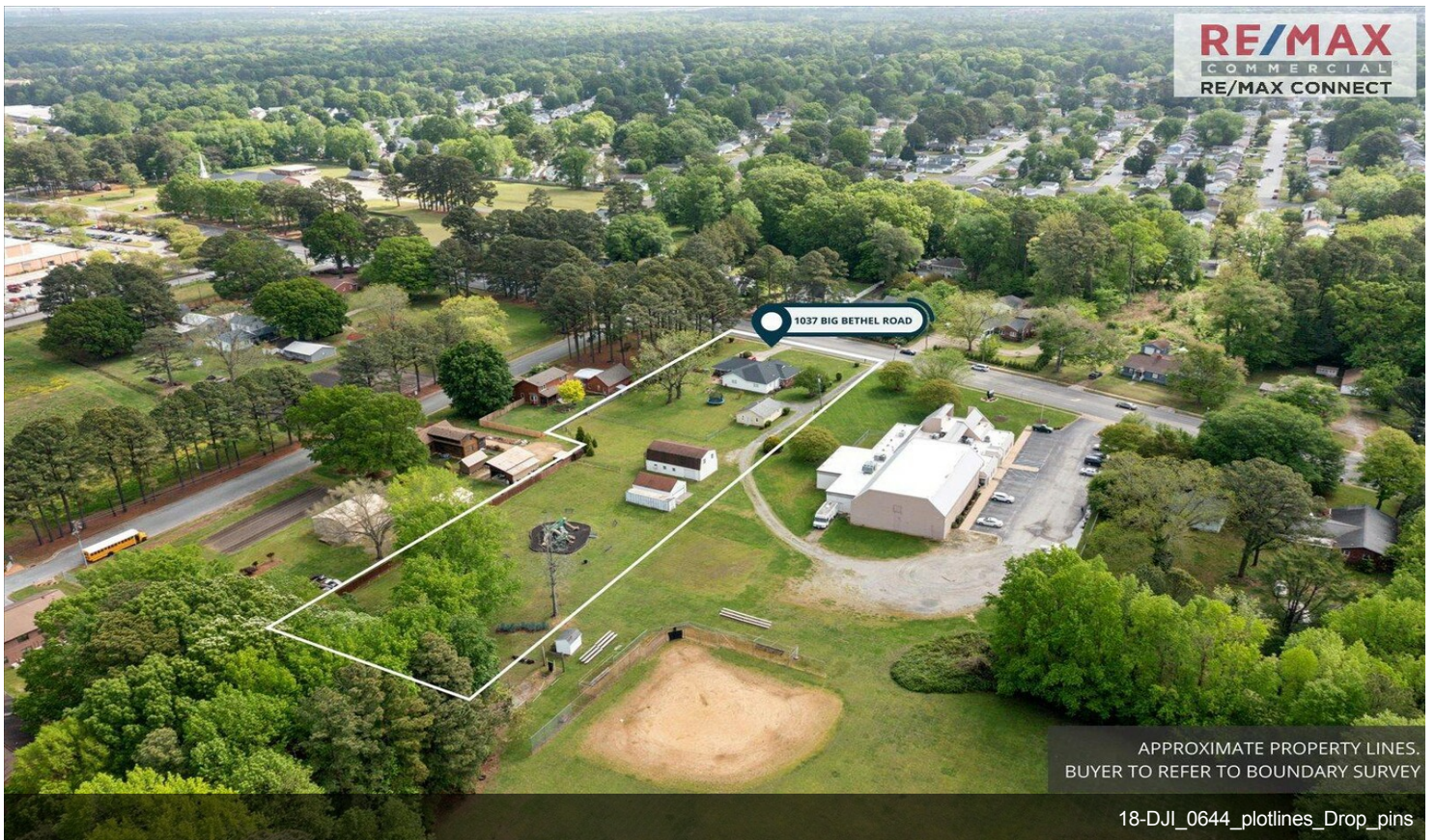


Price:	\$1,800,000
Property Type:	Land
Property Subtype:	Commercial
Proposed Use:	
Sale Type:	Investment or Owner User
Total Lot Size:	13.73 AC
No. Lots:	1
Zoning Description:	R-11
APN / Parcel ID:	4000732



1033-G Big Bethel Road, Hampton, VA 23666

Property Photos



Property Photos



Property Photos



	R-1L	R-43	R-R	R-33	R-22	R-15	R-13	R-11	R-9	R-8	R-4	MD-1	MD-2	MD-3	MD-4	R-M	C-1	C-2	C-3	M-1	M-2	M-3
office, general																						
office, government																						
office, laboratory or research																						
office, medical																						
office, taxicab																						
pawn shop																						
print shop/private postal service, max. 500 sq. ft.																						
print shop/private postal service, max. 3000 sq. ft.																						
print shop/private postal service, no max.																						
restaurant 1																						
restaurant 2																						
restaurant 3																						
retail sales, general																						
rummage sale, temporary																						
second-hand store																						
sign painting shop																						
storage facility 1																						
storage facility 2																						
storage facility 3																						
tattoo parlor																						
tire sales																						
tire repair																						
Turkish bath																						
upholstery shop																						
vehicle repair, heavy																						
vehicle repair, light																						
vehicle sales, new vehicles, to include sales of used vehicles as accessory to new sales																						
vehicle sales, new vehicle inventory lot																						
vehicle sales, of used vehicles																						
vehicle repair, accessory to new vehicle sales																						
vehicle repair, accessory to used vehicle sales																						
vehicle storage, indoor																						
vehicle storage, outdoor																						
wedding stand, food																						
INSTITUTIONAL																						
college/university, public	P	P	P	P	P	P	P	P	P	P	P	P	P	P	P	P	P	P	P	P	P	P
college/university, private	UP	UP	UP	UP	UP	UP	UP	UP	UP	UP	UP	UP	UP	UP	UP	UP	UP	UP	UP	UP	UP	UP
hospital	P	P	P	P	P	P	P	P	P	P	P	P	P	P	P	P	P	P	P	P	P	P
library, public	UP	UP	UP	UP	UP	UP	UP	UP	UP	UP	UP	UP	UP	UP	UP	UP	UP	UP	UP	UP	UP	UP
library, private	P	P	P	P	P	P	P	P	P	P	P	P	P	P	P	P	P	P	P	P	P	P
museum, public	UP	UP	UP	UP	UP	UP	UP	UP	UP	UP	UP	UP	UP	UP	UP	UP	UP	UP	UP	UP	UP	UP
museum, private	UP	UP	UP	UP	UP	UP	UP	UP	UP	UP	UP	UP	UP	UP	UP	UP	UP	UP	UP	UP	UP	UP
post office	P*	P*	P*	P*	P*	P*	P*	P*	P*	P*	P*	P*	P*	P*	P*	P*	P*	P*	P*	P*	P*	P*
religious facility	P*	P*	P*	P*	P*	P*	P*	P*	P*	P*	P*	P*	P*	P*	P*	P*	P*	P*	P*	P*	P*	P*
mental health/substance abuse, treatment facility																						
school, horse riding	UP*	UP*	UP*	UP*	UP*	UP*	UP*	UP*	UP*	UP*	UP*	UP*	UP*	UP*	UP*	UP*	UP*	UP*	UP*	UP*	UP*	UP*
school, public	UP	UP	UP	UP	UP	UP	UP	UP	UP	UP	UP	UP	UP	UP	UP	UP	UP	UP	UP	UP	UP	UP
school, private	UP	UP	UP	UP	UP	UP	UP	UP	UP	UP	UP	UP	UP	UP	UP	UP	UP	UP	UP	UP	UP	UP
RECREATIONAL																						
adult entertainment establishment																						
amusement center																						
amusement center																						
amusement operations																						
auditorium																						
banquet hall																						
billiard hall																						
boat launch/charter boat docking facility																						
boathouse, pier, dock, ramp, commercial (public or private)	UP	UP	UP	UP	UP	UP	UP	UP	UP	UP	UP	UP	UP	UP	UP	UP	UP	UP	UP	UP	UP	UP
bowling alley																						
carival																						
club/hodge, private or fraternal	UP	UP	UP	UP	UP	UP	UP	UP	UP	UP	UP	UP	UP	UP	UP	UP	UP	UP	UP	UP	UP	UP
community center																						

	R-1L	R-43	R-R	R-33	R-22	R-15	R-13	R-11	R-9	R-8	R-4	MD-1	MD-2	MD-3	MD-4	R-M	C-1	C-2	C-3	M-1	M-2	M-3		
coin-operated amusement devices, accessory																								
dance hall	P	P	P	P	P	P	P	P	P	P	P	P	P	P	P	P	P*	P*	P					
golf course/county club	UP	UP	UP	UP	UP	UP	UP	UP	UP	UP	UP	UP	UP	UP	UP	UP	UP	UP	UP	UP	UP	UP	UP	
mainna, including boat sales, rental, storage and fuel	UP	UP	UP	UP	UP	UP	UP	UP	UP	UP	UP	UP	UP	UP	UP	UP	UP	UP	UP	UP	UP	UP	UP	
park, private	P	P	P	P	P	P	P	P	P	P	P	P	P	P	P	P	P	P	P	P	P	P	P	
park, public	P	P	P	P	P	P	P	P	P	P	P	P	P	P	P	P	P	P	P	P	P	P	P	
recreation center																								
shooting range, indoor	UP*	UP*	UP*	UP*	UP*	UP*	UP*	UP*	UP*	UP*	UP*	UP*	UP*	UP*	UP*	UP*	UP*	UP*	UP	UP	UP	UP	UP	
shooting range, trap or steel																								
skateboard ramp			SX*																					
skating rink, ice or roller																								
swimming pool, commercial																								
theater, indoor																								
theater, outdoor																								
AGRICULTURAL & ANIMAL-RELATED																								
agriculture/farming																								
animal day care			P*																					
animal shelter			UP																					
community garden	P*	P*	P*	P*	P*	P*	P*	P*	P*	P*	P*	P*	P*	P*	P*	P*	P*	P*	P*	P*	P*	P*	P*	
home based rescue	UP	UP	UP	UP	UP	UP	UP	UP	UP	UP	UP	UP	UP	UP	UP	UP	UP	UP	UP	UP	UP	UP	UP	
Kennel			UP*																					
silviculture/plant nursery, no retail sales	UP*	UP*	P	UP*	UP*	UP*	UP*	UP*	UP*	UP*	UP*	UP*	UP*	UP*	UP*	UP*	UP*	UP*	UP*	UP*	UP*	UP*	UP*	
silviculture/plant nursery, including retail sales																								
slaughtehouse/stockyard			UP*																					
stables			UP*																					
taxidermist																								
veterinarian office/hospital			UP*																					
INDUSTRIAL																								
blacksmith																								
blast furnace/boiler works																								
brewery/distillery/winery, micro																								
brewery/distillery/winery																								
color shutoff mill																								
drop forge/power hammer																								
elevator, coal, grain or flour																								
foundry																								
freezing plant for produce																								
ice storage and distribution																								
laundry and cleaning, commercial																								
machine shop or light metal fabrication																								
manufacturing of boats/sail-making																								
manufacturing/processing/treatment of baked goods, dairy products																								
manufacturing/processing/treatment of seafood																								
manufacturing/processing/treatment 1																								
manufacturing/processing/treatment 2																								
manufacturing/processing/treatment 3																								
manufacturing/processing/treatment 4																								
manufacturing/processing/treatment 5																								
mill, lumber or saw, including lumberyard																								
mixing plant, asphalt or concrete																								
motion picture studio																								
pharmaceutical processor																								
rolling mill																								
salvage or wrecking																								
scrap metal processor																								
small artisan shop																								
smelting of tin, copper, iron, or zinc																								
storage/distribution of flammable liquids																								
storage of materials, indoor/outdoor, including equipment rental and contractor's storage																								
tannery																								

Sec. 3-3(21)

Sec. 3-3(23)

Sec. 3-3(46)

Sec. 3-3(26)

Sec. 3-3(25)

Sec. 3-3(26)

Sec. 3-3(37)

Sec. 3-3(23)

Sec. 3-3(46)

Sec. 3-3(38)

Sec. 3-3(39)

Sec. 3-3(27)

Sec. 3-3(19)

Sec. 3-3(47)

Sec. 3-3(48)

Sec. 3-3(28)

Sec. 3-3(43)

Sec. 3-3(31)

	R-1L	R-43	R-R	R-33	R-22	R-15	R-13	R-11	R-9	R-8	R-4	MD-1	MD-2	MD-3	MD-4	R-M	C-1	C-2	C-3	M-1	M-2	M-3	
trash or junk collection, storage, sorting or hauling																							
yard, railroad freight classification																					P	P	P
yard, trucking terminal or drayage																					P	P	P
warehouse/distribution center																					P	P	P
UTILITIES & TRANSPORTATION																							
bus terminal																							
communication antenna, commercial building-mounted	P*	P*	P*	P*	P*	P*	P*	P*	P*	P*	P*	P*	P*	P*	P*	P*	P*	P*	P*	P*	P*	P*	P*
communication tower, commercial	P*/UP*	P*/UP*	P*/UP*	P*/UP*	P*/UP*	P*/UP*	P*/UP*	P*/UP*	P*/UP*	P*/UP*	P*/UP*	P*/UP*	P*/UP*	P*/UP*	P*/UP*	P*/UP*	P*/UP*	P*/UP*	P*/UP*	P*/UP*	P*/UP*	P*/UP*	P*/UP*
communication tower, noncommercial 75' max	P	P	P	P	P	P	P	P	P	P	P	P	P	P	P	P	P	P	P	P	P	P	P
communication tower, noncommercial 75' to 125'	UP	UP	UP	UP	UP	UP	UP	UP	UP	UP	UP	UP	UP	UP	UP	UP	UP	UP	UP	UP	UP	UP	UP
heliport/helisop	P*	P*	P*	P*	P*	P*	P*	P*	P*	P*	P*	P*	P*	P*	P*	P*	P*	P*	P*	P*	UP	UP	UP
parking garage/lot, public	UP*	UP*	UP*	UP*	UP*	UP*	UP*	UP*	UP*	UP*	UP*	UP*	UP*	UP*	UP*	UP*	UP*	UP*	UP*	UP*	UP*	UP*	UP*
parking garage/lot, private																							
parking lot, accessory to PC-2 uses																							
parking lot, used as an extension of or in conjunction with adjacent C-zoned property under common ownership																P							
pier, dock, seawall related to commercial or industrial water transport																					UP	UP	UP
railroad track spur																					P	UP	
transit station																							
transmission center, government-operated																							
utility infrastructure/structure to house a government function	P	P	P	P	P	P	P	P	P	P	P	P	P	P	P	P	P	P	P	P	P	P	P
utility building/substation	PC	PC	PC	PC	PC	PC	PC	PC	PC	PC	PC	PC	PC	PC	PC	PC	PC	PC	PC	PC	PC	PC	PC
utility plant/power plant																							
OTHER																							
cemetary	UP*	UP*	UP	UP*	UP*	UP*	UP*	UP*	UP*	UP*	UP*	UP*	UP*	UP*	UP*	UP*	UP*	UP*	UP*	UP*	UP*	UP*	UP*
excavation, filling, borrow pit operation, extraction, processing, or removal of soil	UP*	UP*	UP*	UP*	UP*	UP*	UP*	UP*	UP*	UP*	UP*	UP*	UP*	UP*	UP*	UP*	UP*	UP*	UP*	UP*	UP*	UP*	UP*
off-premises existing signs, existing																							
open air, version of any use permitted in TRC-2																							
promotional event																							
rescue mission																							
wholesaler																							

Sec. 3-3(58)

Sec. 3-3(35)

Sec. 10-4(11)

Sec. 3-3(36)