



Bldg 21-Longford Plaza III

3213 E Warm Springs Rd, Las Vegas, NV 89120



FIRST FEDERAL REALTY

DeSimone



Patty Ryan

First Federal Realty DeSimone

1742 W Horizon Ridge Pky, Suite 100, Henderson, NV 89012

pryan@desimonecompanies.com

Direct: (702) 600-0177



Bldg 21-Longford Plaza III

\$1.25 /SF/Month

Located on Warm Springs Road between Eastern & Pecos Road. The property features easy access to the I-15 via 215 beltway and is minutes from US 93/95. Harry Reid International Airport is minutes away. Ready for move-in now!

- Partially furnished - Ready for move-in!
- Lots of natural light
- Close to Harry Reid International Airport with easy access to I-215
- Many Nearby Amenities including restaurants and shopping
- Surrounded by professional and medical users

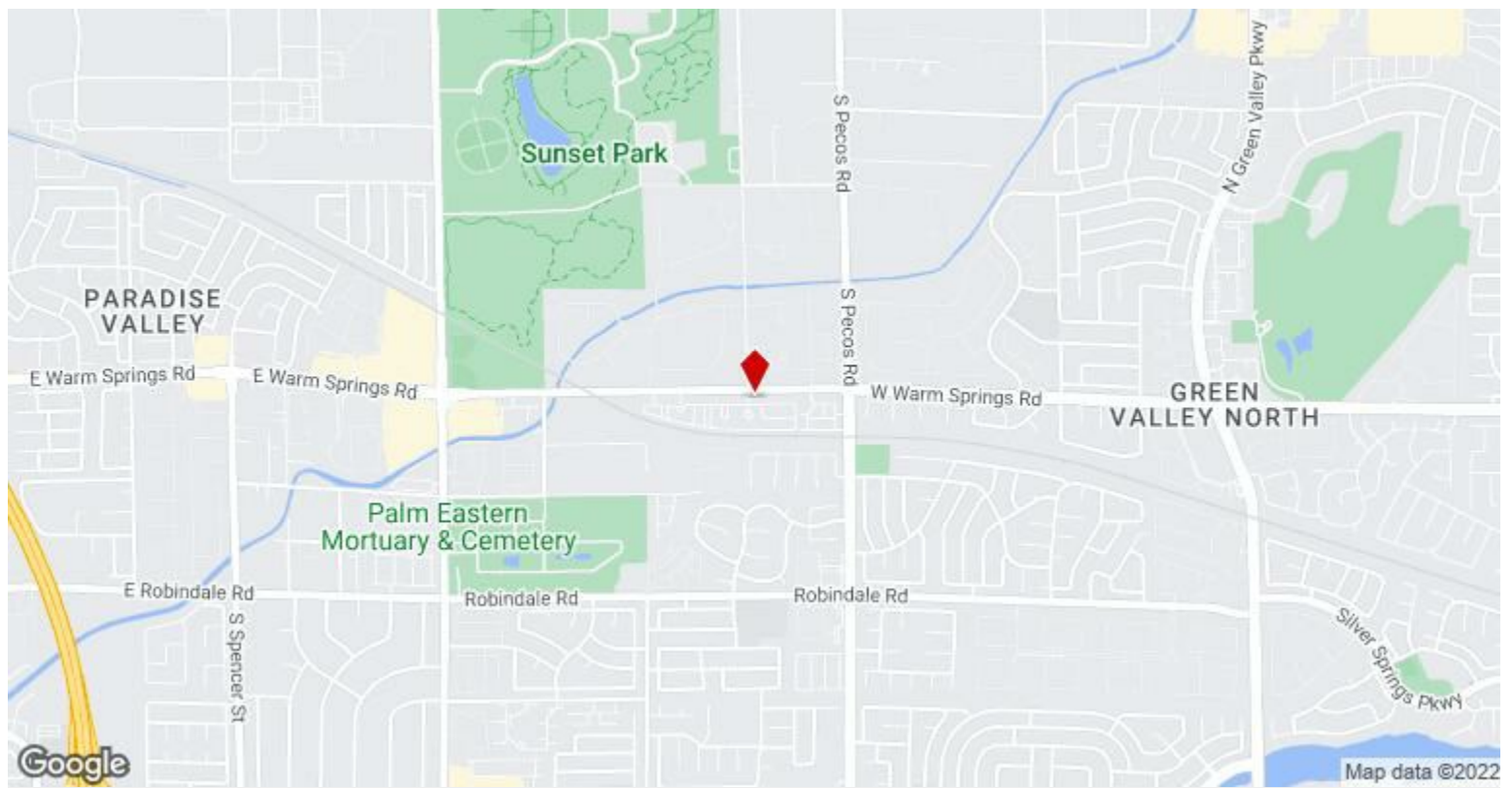


Rental Rate:	\$15.00 /SF/Yr
Property Type:	Office
Property Subtype:	Medical
Building Class:	B
Rentable Building Area:	8,692 SF
Year Built:	2004
Walk Score ®:	24 (Car-Dependent)
Transit Score ®:	35 (Some Transit)
Rental Rate Mo:	\$1.25 USD/SF/Mo

1st Floor Ste 3213 Condo

Space Available	1,676 SF
Rental Rate	\$1.25 /SF/Month
Date Available	Now
Service Type	Triple Net (NNN) \$0.51/SF/month
Built Out As	Standard Office
Space Type	Relet
Space Use	Office
Lease Term	Negotiable

This suite features 4 offices, 2 restrooms, break room, copy area, and large open area for reception/lobby or can be used as a conference area. Newer carpet and flooring throughout. This office is partially furnished. The building features a court yard entrance with elements of Mediterranean decor like tiled roof, french doors and lush landscaping. Please contact Patty Ryan for more information and showings 702.600.0177. CAM/NNN fee is \$0.51/SF/month.



3213 E Warm Springs Rd, Las Vegas, NV 89120

Located on Warm Springs Road between Eastern & Pecos Road. The property features easy access to the I-15 via 215 beltway and is minutes from US 93/95. Harry Reid International Airport is minutes away. Ready for move-in now! Please contact Patty Ryan for more information and showings 702.600.0177.

Property Photos



Building Photo



Courtyard Entry

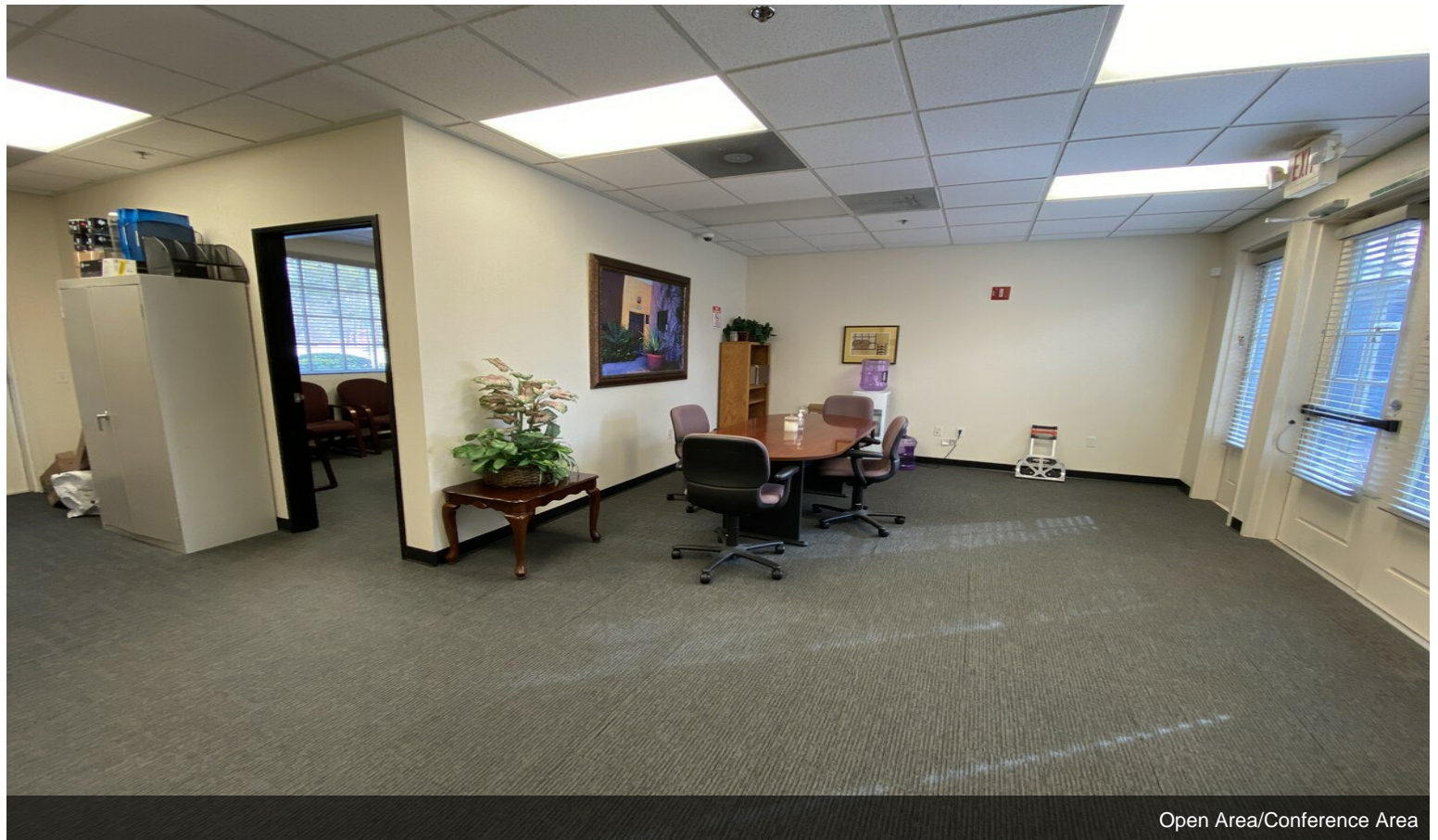
Property Photos



Property Photos

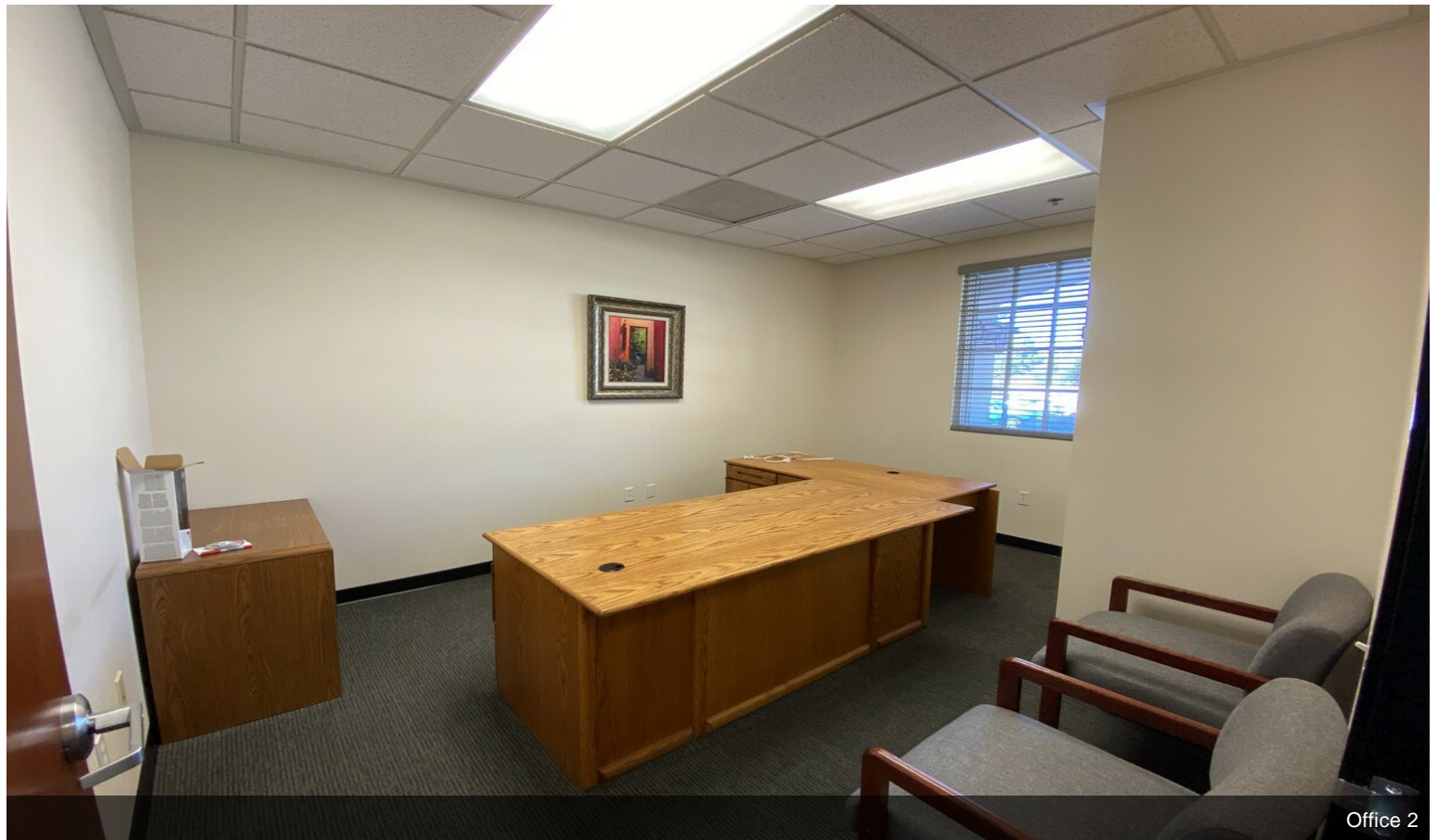
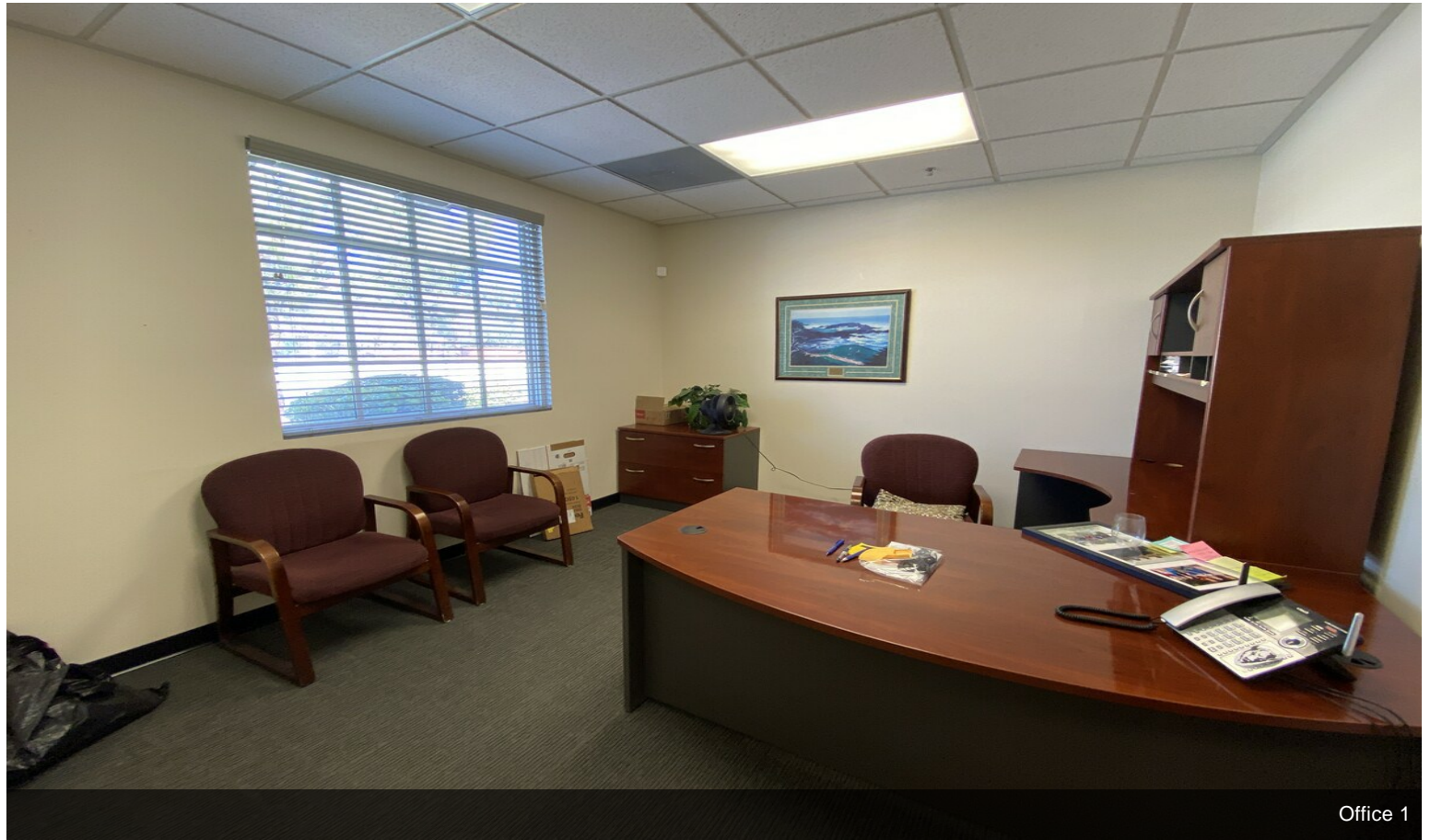


Entrance/Open Area



Open Area/Conference Area

Property Photos



Property Photos



Property Photos



Entrance/Open Area



Break Room

Property Photos



Property Photos

