



GIBBONS WHITE  
Incorporated

# 2905 Wilderness Place

Suite A, Boulder, CO

2905 Blue Mountain Arts.

### Steve Sims

steve@gibbonswhite.com  
(303) 586-5932

www.gibbonswhite.com

 **Property Info & Gallery**

 **View Map**

## Central Boulder Full Floor Office Space

Available Space	5,000 - 12,050 sq. ft.
Lease Rate / sq. ft.	\$14.25 NNN
Expenses / sq. ft.	\$11.58*

\*Not Including Electric, Janitorial or Trash

- 12,050 sq. ft. on Ground Floor with Ability to Subdivide Down to 5,000 sq. ft.
- Interior Has Been Cleared Out and Opened Up But Has New Drywall and Ceiling Tiles Making It Easier and Faster to Customize For a Tenant's Future Buildout
- Entryway and Lobby Have Been Updated With New Paint and LVT Flooring
- Lots of Natural Light with Windows on All Four Sides
- Located Near Foothills Parkway & Valmont Road Giving Employees Easy Access from All Parts of the City & East County
- Plenty of Free Parking Spaces On-Site & Close Proximity to RTD Bus Station
- Short Distance to Whole Foods Market, & the Many New Restaurants & Stores in the Steel Yards, S'Park & Reve Developments

The information included has been obtained from sources believed reliable. While we do not doubt the accuracy of the information, it has not been verified and no guarantee, warranty, or representation is being made.

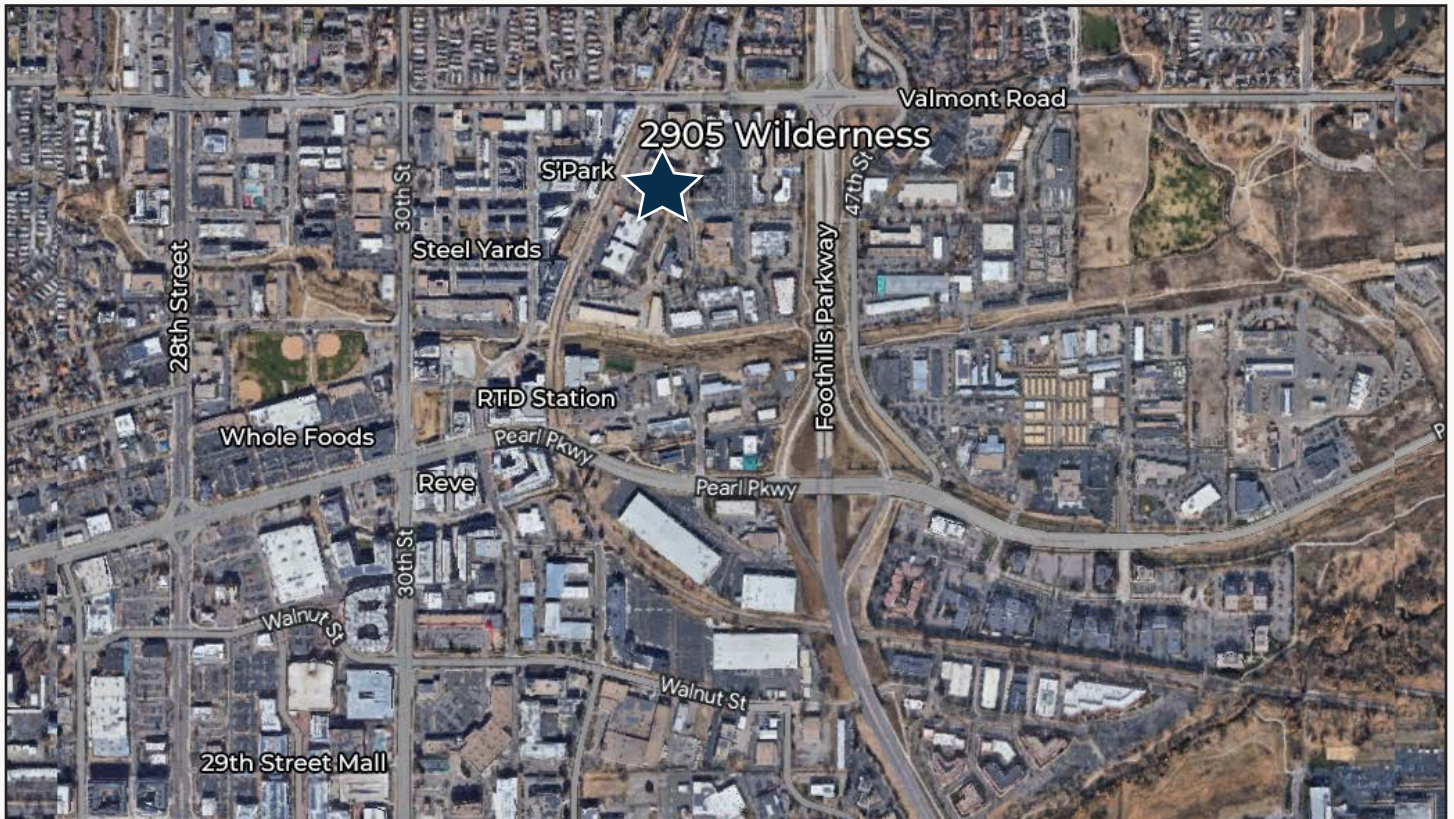


2305 Canyon Blvd, Suite 200, Boulder, CO 80302 - (303) 442-1040



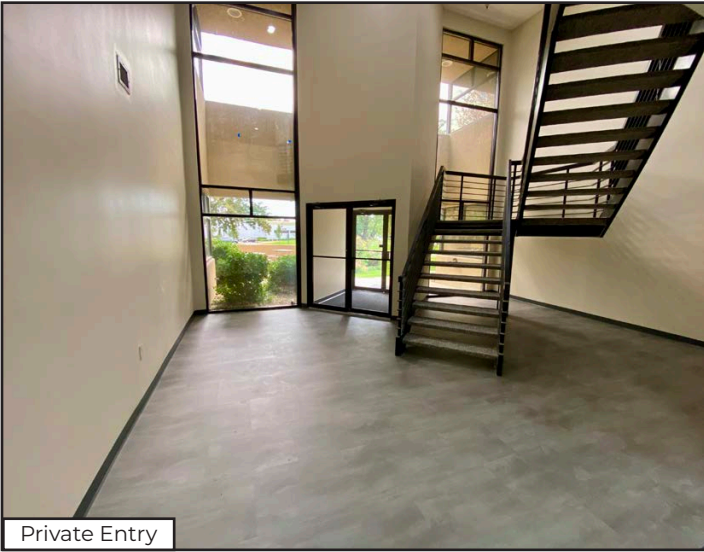
Suite A Floor Plan

Full 1st Floor

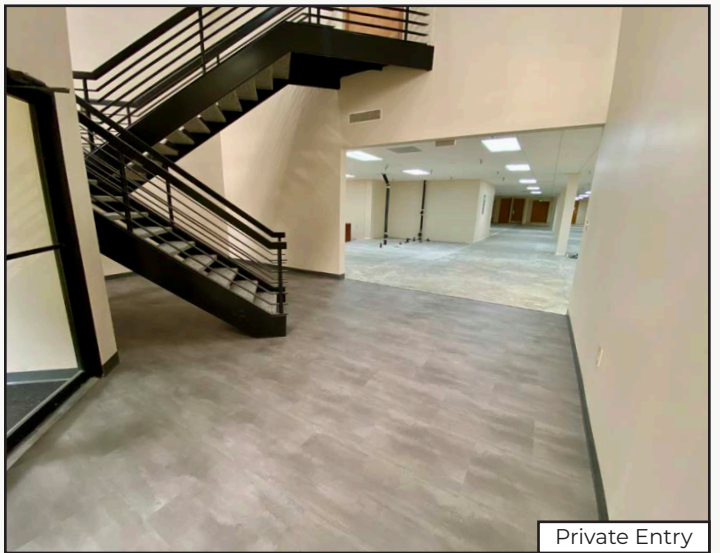


The information included has been obtained from sources believed reliable. While we do not doubt the accuracy of the information, it has not been verified and no guarantee, warranty, or representation is being made.

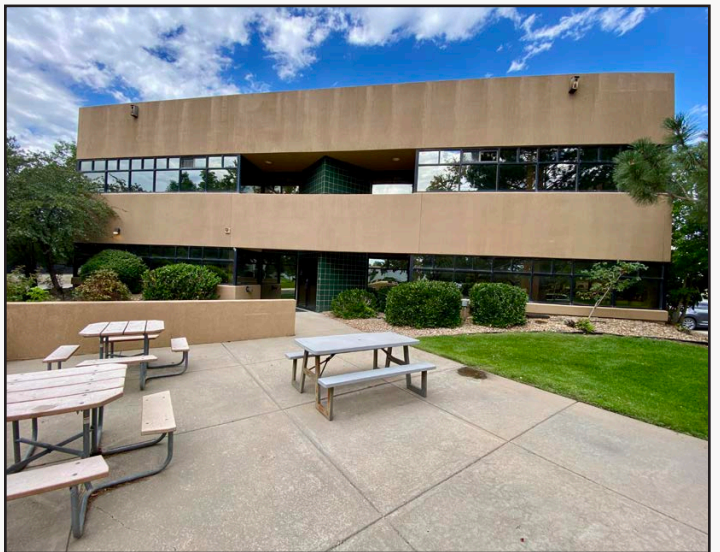




Private Entry



Private Entry



The information included has been obtained from sources believed reliable. While we do not doubt the accuracy of the information, it has not been verified and no guarantee, warranty, or representation is being made.