

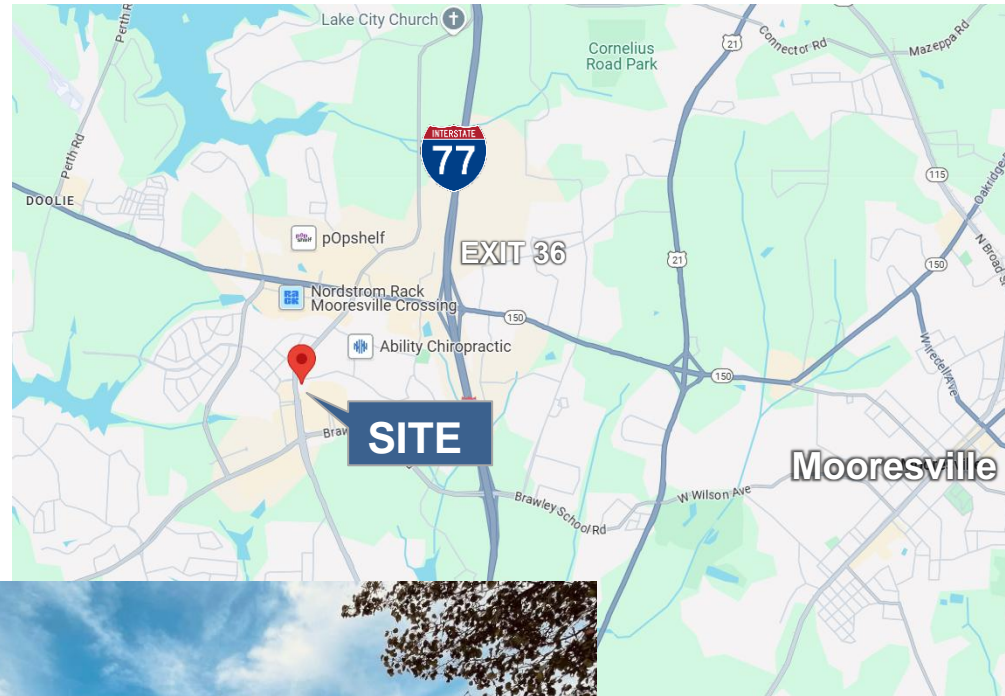
AVAILABLE FOR LEASE

**249 Williamson Road
Suite 200
 Mooresville, NC 28117**

3,162 +/- Rentable SF

- Tax Parcel ID: 4647-24-9244.0000
- Zoned: CMX
- Lots of windows and natural light
- Boardroom 23'9" X 15'
- 7 offices with windows
- Reception area
- 2 handicap accessible bathrooms inside the space
- Kitchen
- Elevator Access
- On-Site Parking

LEASE PRICE \$ 25/SF/YR Modified Gross



CONTACT

Michelle Polito
cell 704.995.4885
michelle@knoxgroupinc.com

19725 Oak Street
Suite 8
Cornelius, NC 28031
704.896.1911



Conveniently located:

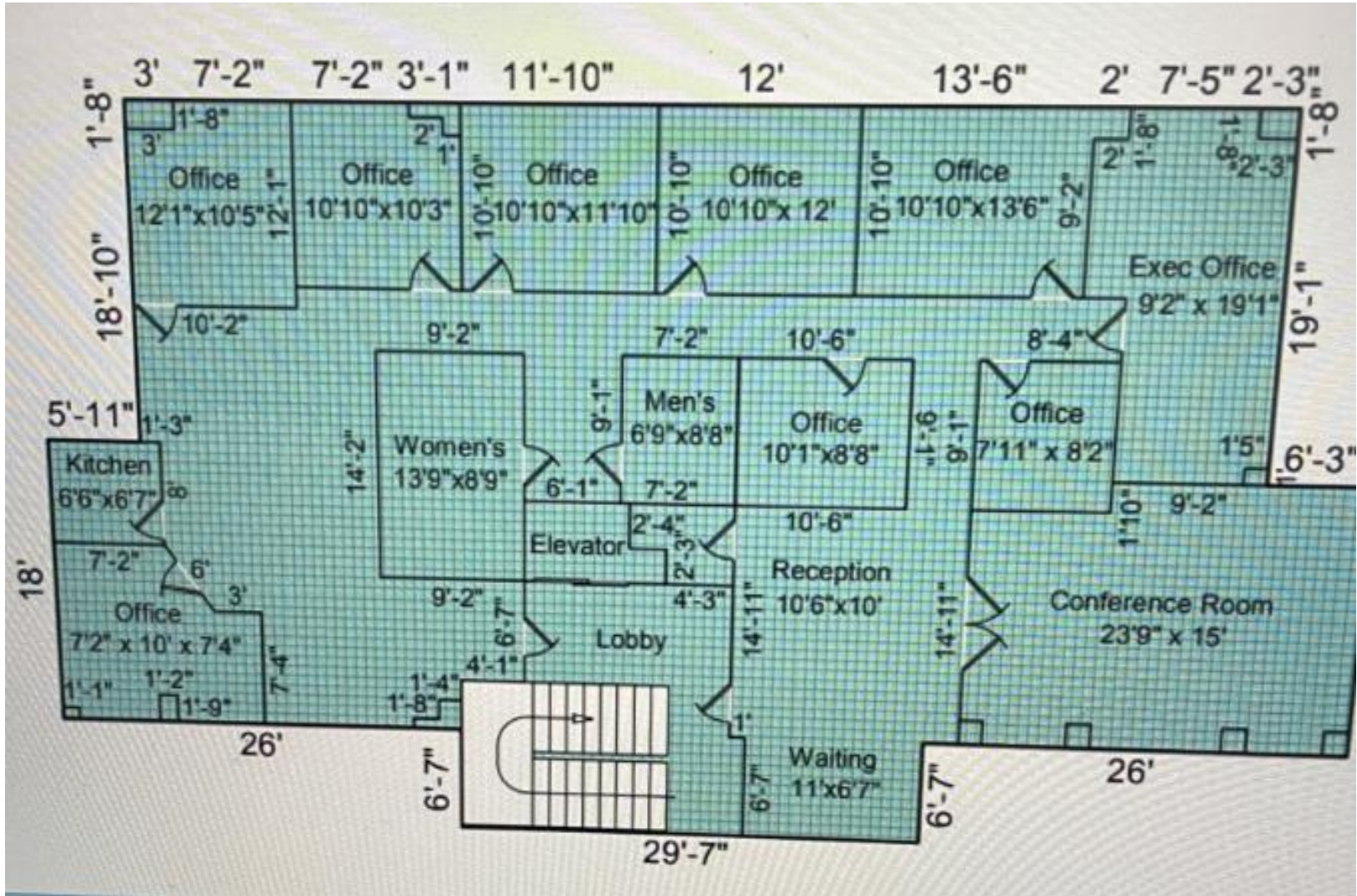
- 0.7 miles from Hope Park*
- 0.9 miles from Lowes Home Improvement*
- 1.1 miles from I-77*
- 1.1 miles from Sam's Club*



Demographics	1 mile	3 mile	5 mile
Population	3,224	19,580	49,185
Average Household Income	\$90,977	\$83,968	\$80,857

All information regarding this property was obtained from sources deemed reliable but no warranty or representation is made of the accuracy thereof and the properties are subject to prior sale or lease or withdrawal.

Floor Plan



All information regarding this property was obtained from sources deemed reliable but no warranty or representation is made of the accuracy thereof and the properties are subject to prior sale or lease or withdrawal.

19725 Oak Street
Suite 8
Cornelius, NC 28031
704.896.1911

