

15420 South 70th Court, Orland Park, IL 60462

15420 70th Ct



OFFERING SUMMARY

Available SF:	3,880 SF
Lease Rate:	\$4,000/mo
Lot Size:	1.37 Acres
Zoning:	MFG
Market:	Chicago MSA Southwest Suburbs

PROPERTY OVERVIEW

3,000-square-foot warehouse with an additional 880sf of upstairs office space. The main floor has 3 built-out offices as well as 2 bathrooms. The space is currently used and built-out as an office space. Some minor construction is needed to access the overhead, which is covered with a wall on the inside. This versatile space offers a seamless combination of ample storage capacity and comfortable office areas, creating an ideal environment for various business operations. The offices are perfect for accommodating administrative tasks, providing a private workspace for management or team members. Ideal for production or various operational needs. Plenty of parking on the well-maintained paved lot.

PROPERTY HIGHLIGHTS

- 3,000sf main floor
- Additional 880sf upstairs
- Plenty of parking
- 1 Overhead door (12x14)
- Monument signage available

for more information

Neil Haleem

708.873.5540
neil@networkregroup.com

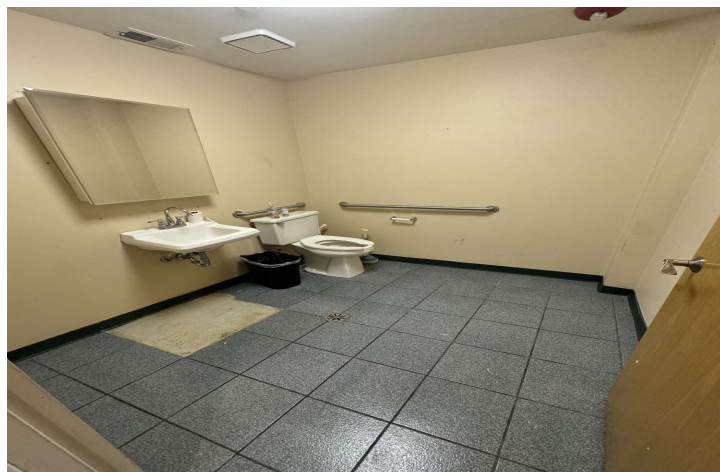
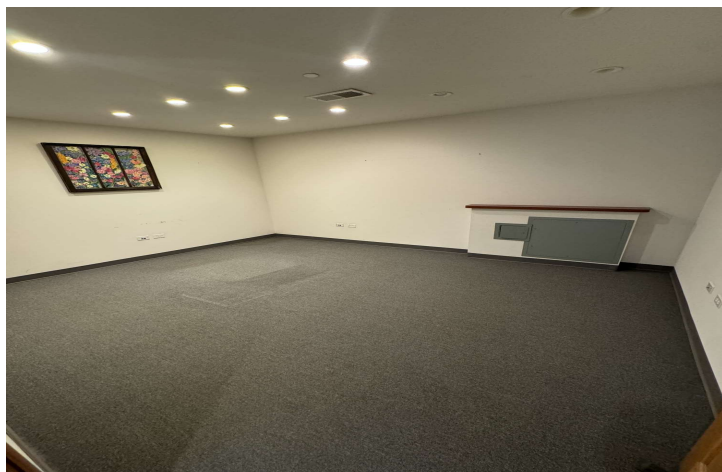
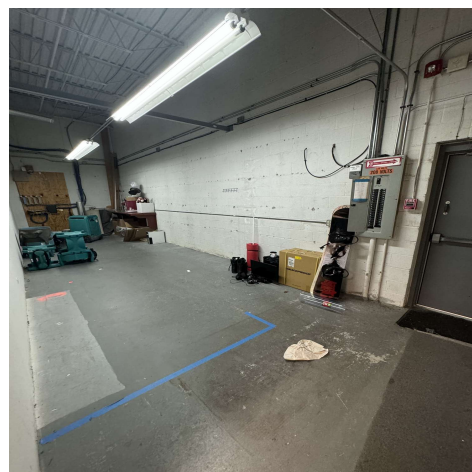
Adam Haleem

708.800.6487
adam@networkregroup.com



15420 South 70th Court, Orland Park, IL 60462

15420 S 70th Ct



for more information

Neil Haleem

708.873.5540
neil@networkregroup.com

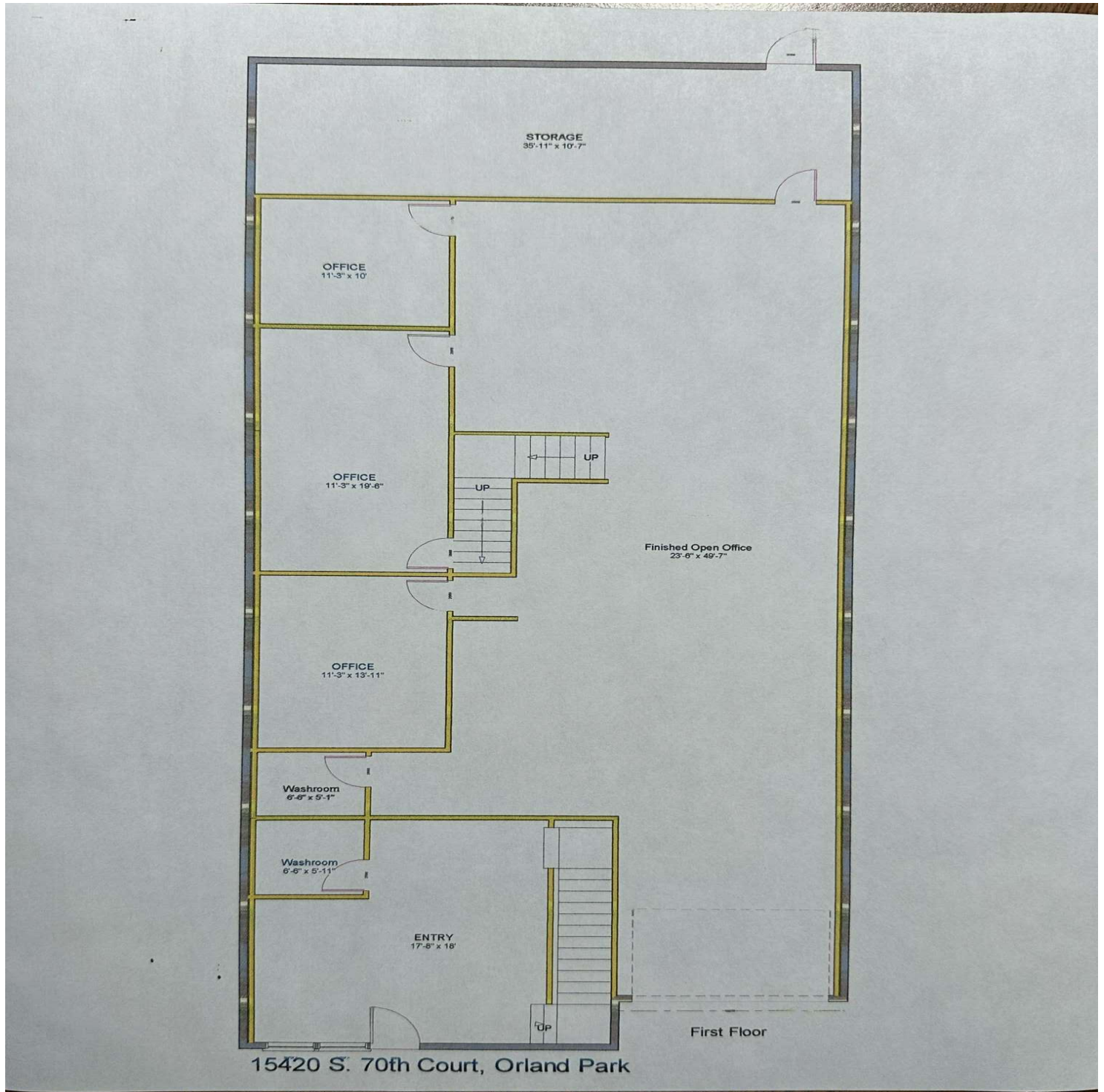
Adam Haleem

708.800.6487
adam@networkregroup.com



15420 South 70th Court, Orland Park, IL 60462

15420 S 70th Ct



for more information

Neil Haleem

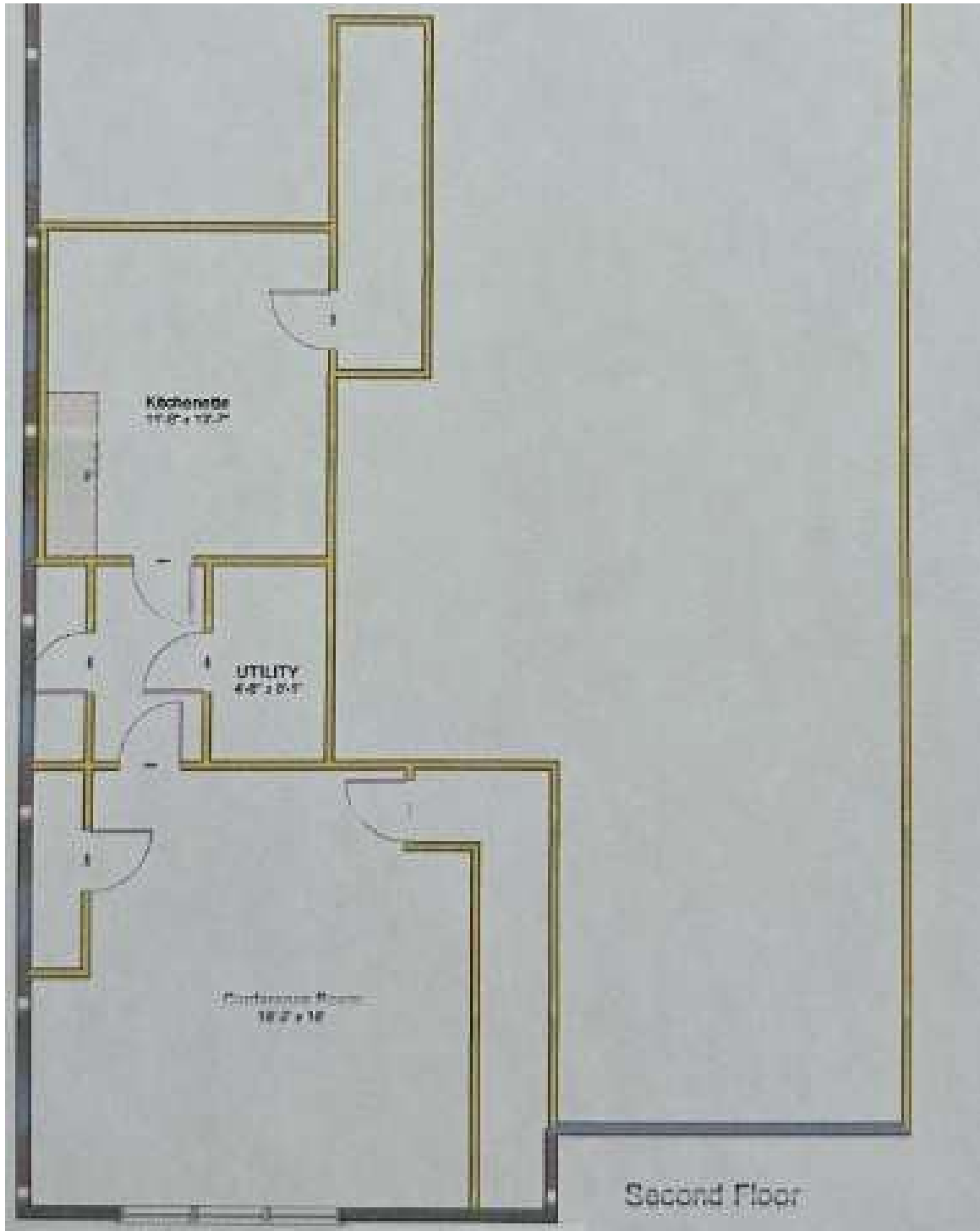
708.873.5540
neil@networkregroup.com

Adam Haleem

708.800.6487
adam@networkregroup.com

15416 South 70th Court, Orland Park, IL 60462

15416 S 70th Ct



for more information

Neil Haleem

708.873.5540

neil@networkregroup.com

Adam Haleem

708.800.6487

adam@networkregroup.com

15420 South 70th Court, Orland Park, IL 60462

15420 S 70th Ct



for more information

Neil Haleem

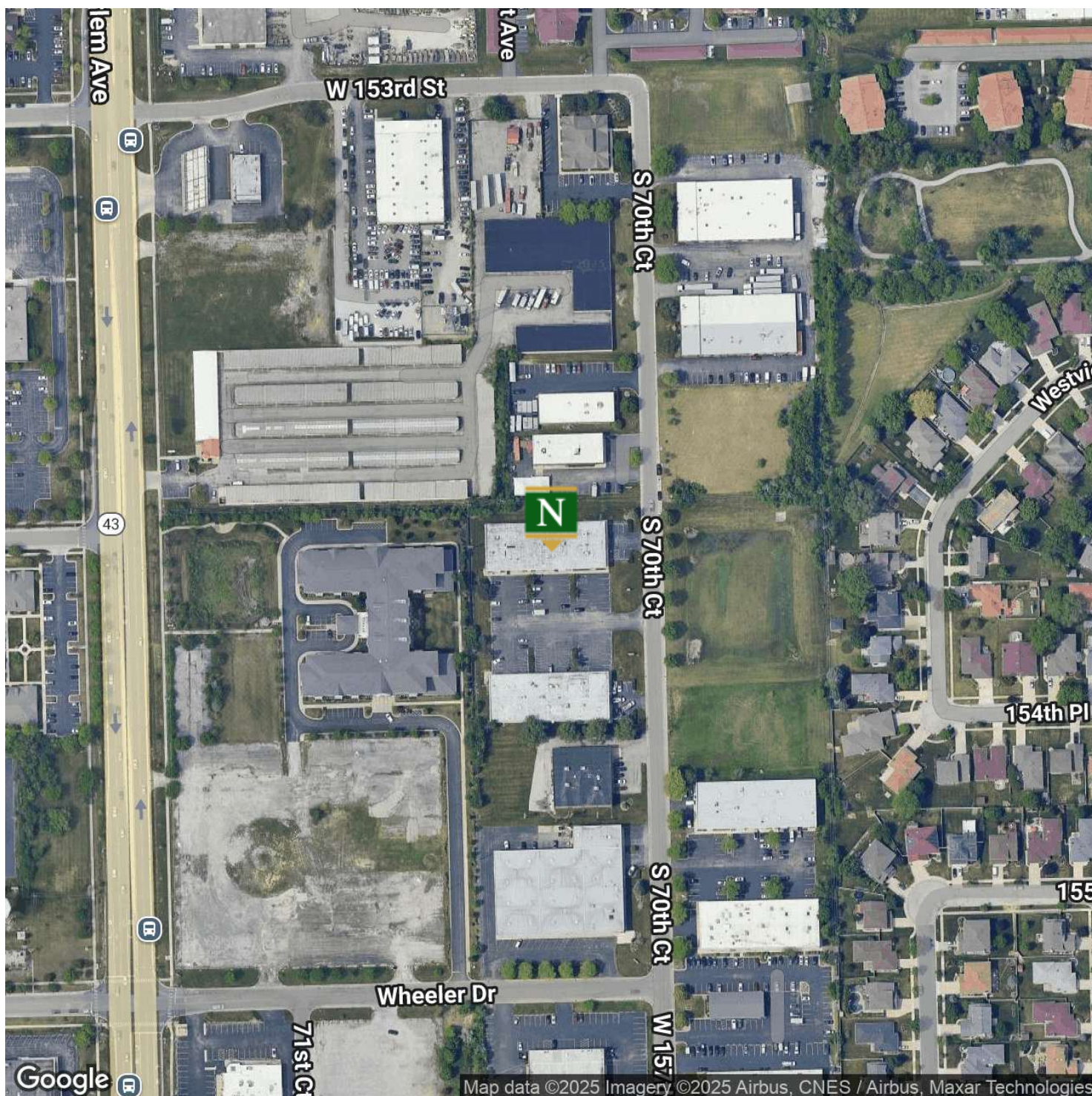
708.873.5540
neil@networkregroup.com

Adam Haleem

708.800.6487
adam@networkregroup.com

15420 South 70th Court, Orland Park, IL 60462

15420 S 70th Ct



for more information

Neil Haleem

708.873.5540

neil@networkregroup.com

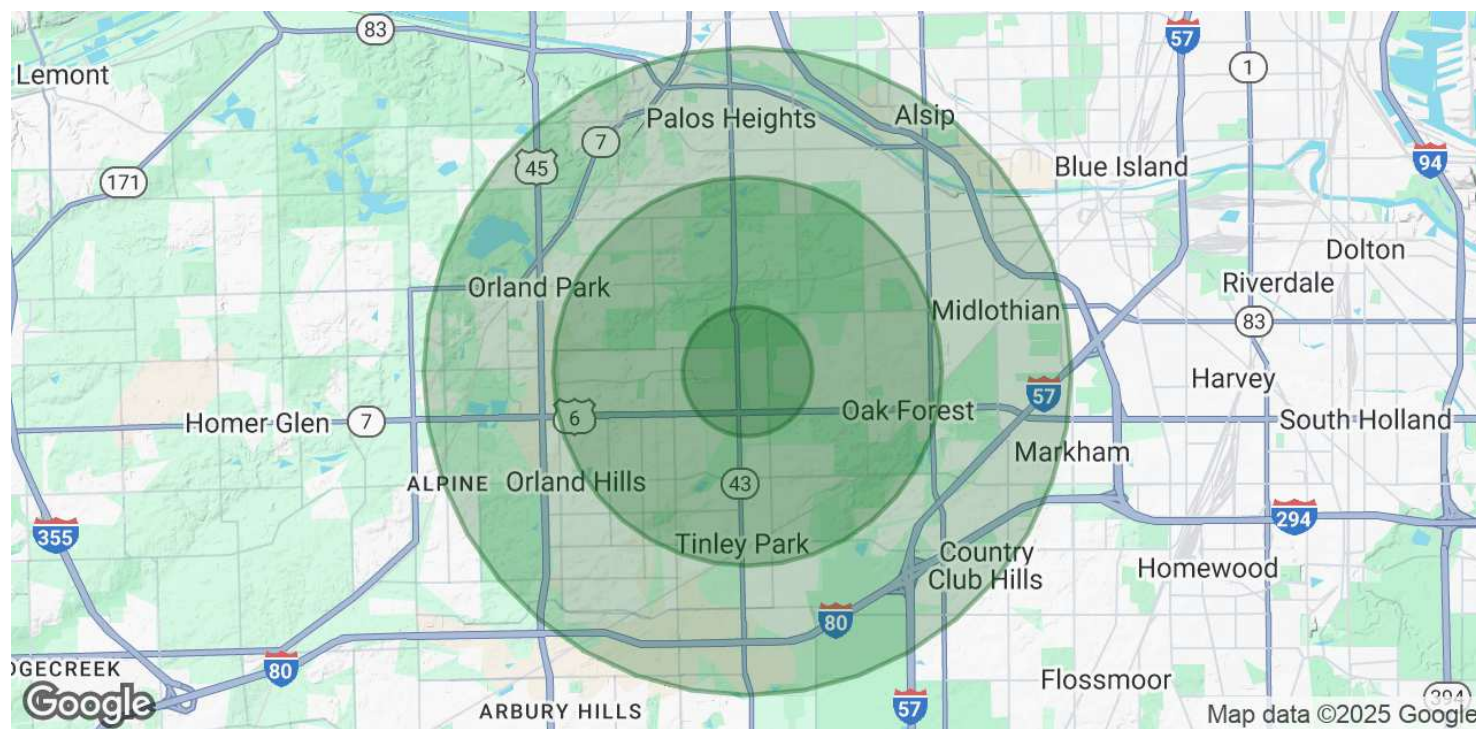
Adam Haleem

708.800.6487

adam@networkregroup.com



15420 S 70th Ct



POPULATION	1 MILE	3 MILES	5 MILES
Total Population	9,342	85,143	191,503
Average Age	45	43	44
Average Age (Male)	43	42	42
Average Age (Female)	46	44	45

HOUSEHOLDS & INCOME	1 MILE	3 MILES	5 MILES
Total Households	3,962	33,933	75,343
# of Persons per HH	2.4	2.5	2.5
Average HH Income	\$111,270	\$114,885	\$117,749
Average House Value	\$287,836	\$302,505	\$316,814

ETHNICITY (%)	1 MILE	3 MILES	5 MILES
Hispanic	11.9%	12.1%	13.5%

RACE	1 MILE	3 MILES	5 MILES
------	--------	---------	---------

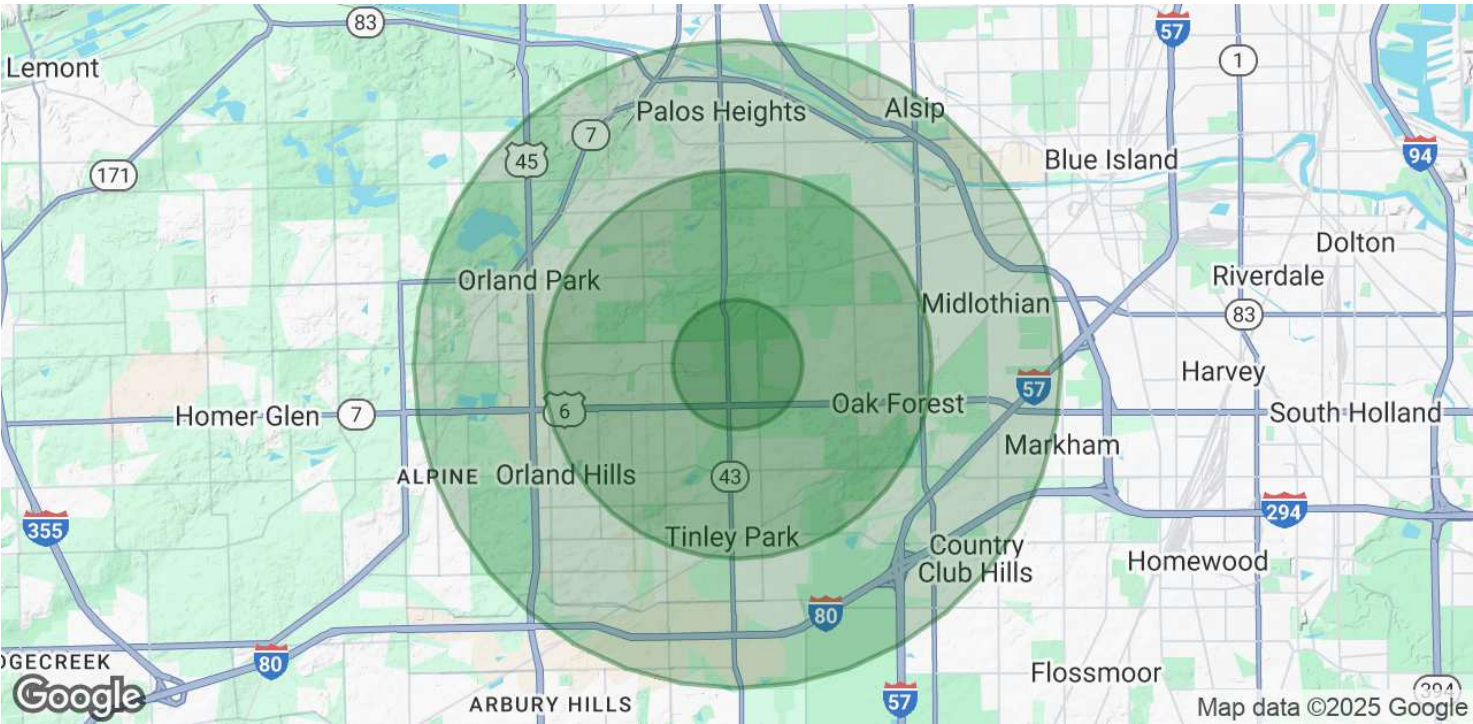
Neil Haleem

Adam Haleem

708.800.6487
adam@networkregroup.com

15420 South 70th Court, Orland Park, IL 60462

15420 S 70th Ct



Total Population - White	7,481	65,994	138,805
% White	80.1%	77.5%	72.5%
Total Population - Black	513	5,379	20,311
% Black	5.5%	6.3%	10.6%
Total Population - Asian	289	3,337	6,747
% Asian	3.1%	3.9%	3.5%
Total Population - Hawaiian	1	9	32
% Hawaiian	0.0%	0.0%	0.0%
Total Population - American Indian	37	293	729
% American Indian	0.4%	0.3%	0.4%
Total Population - Other	364	3,409	9,591
% Other	3.9%	4.0%	5.0%

Demographics data derived from AlphaMap

for more information

Neil Haleem

708.873.5540
neil@networkregroup.com

Adam Haleem

708.800.6487
adam@networkregroup.com

