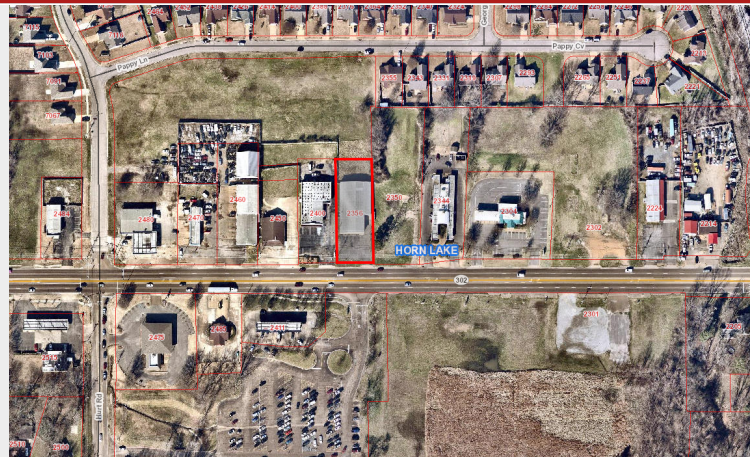


FOR LEASE



8,400 +/- SF Retail/Warehouse 2356 Goodman Rd, Horn Lake, MS

Rate: \$6,250.00 per Month
Lease Type: Modified Gross
Lease Term: 3-5 Years
Bldg Size: 8,400 +/- SF
Yard Space: Potentially 1 +/- AC
Lot Size: 0.53 Acres
Zoning: C-4



RHODES THOMPSON
Commercial Agent
(662) 892-4000
rhodesthompson@outlook.com
Mississippi

(901) 286-6200 - Main Office
(901) 833-8000 - Cell

Property Description

Located at 2356 Goodman Road West in Horn Lake, MS, this 8,400 +/- SF commercial property offers prime visibility. The building includes a 1,800 +/- SF showroom, 6,000 +/- SF warehouse with a 10' x 10' roll-up door, 168 +/- SF office, storage room, and two restrooms. Situated on 0.53 +/- acres and zoned C-4, it provides excellent flexibility for retail, service, or light industrial use at a lease rate of \$6,250 per month.

Location Description

Positioned on Goodman Road West in Horn Lake, MS, this property offers prime visibility along one of DeSoto County's busiest commercial corridors with approximately 35,000 cars per day. The site provides excellent regional access to Southaven, Hernando, and Memphis via I-55, surrounded by a strong mix of retail and service businesses that drive consistent customer traffic.

Property Highlights

- Ideal showroom and warehouse space
- Prime Goodman Road West frontage
- High traffic area with unbeatable visibility



PROPERTY SUMMARY

2356 Goodman Road, Horn Lake, MS

2356 Goodman Road West | Horn Lake, MS 38637



