



18660 Highway 441, Mount Dora, FL, 32757

NEW CONSTRUCTION

- **Lease Rate:** Call for Pricing
- **Available SF:** 2,045-12,326
- **Mixed Use Development**
- **Delivery:** Available Now

Mike Stewart, Realtor ®
(407) 766-9826
MikeStewartRE@gmail.com

Jay Stewart, Realtor ®
(407) 913-2677
JayStewart.RE@gmail.com

Highlights

- Located on the most active section of US Highway 441 in Mount Dora with over 51,000 cars passing the site daily
- Located across from Lowe's and Publix Shopping Center at Loch Leven Landing
- Ideal for a restaurants, retail, medical, dental, office
- Over 47,500 residents with average incomes of \$76,860 within a 10-minute drive from the site

Conceptual Plan

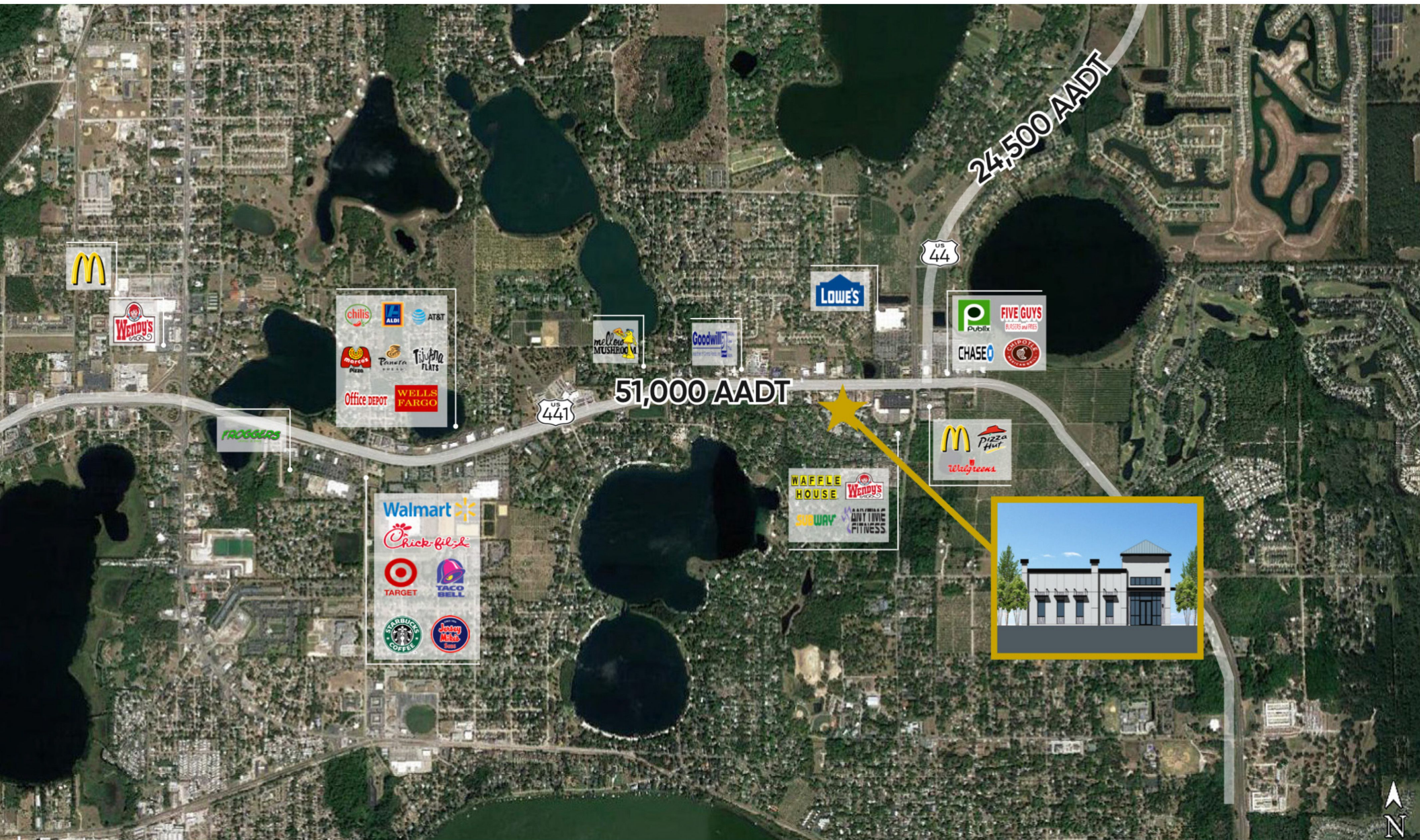


Mike Stewart (407) 766-9826



Jay Stewart (407) 913-2677

Aerial & Merchant Map



Mike Stewart (407) 766-9826



Jay Stewart (407) 913-2677