

**9720 S. Virginia St.**  
**Unit B - ZONING: P U D**

**Deborah Hayward** Associate (NRED# S.192298)  
 650 279 0102 (cell) • Deborah@RMDNevada.com

**FOR LEASE**  
**3552 Gross SF + / -**

**\$1.30 SF/Mo /NNN (Est/ \$.20 SF)**

9720 S. Virginia St. Unit B  
 Reno, NV 89511  
 APN/Parcel 163-150-09

**FEATURES**

- *Top quality showroom finishes & upgraded lighting*
- *Proximity to S Virginia St Corridor & I-580/Hwy 395 So. Meadows Pkwy on/off ramp*
- *Adjacent to WinCo anchored shopping center*
- *Professionally managed building*
- *1,600 +/- SF showroom floor*
- *960 +/- SF mezzanine office*
- *992 +/- SF warehouse*
- *(1) 12' x 12' grade level door*
- *Power: 225amps, 120/208v, 3-phase*
- *Available*
- *January 2024*



# 9720 S. Virginia St.

## Unit B - ZONING: P U D

**FOR LEASE**

3552 Gross SF +/-  
\$1.30 SF/Mo / NNN (Est. \$.20 SF)

9720 S. Virginia St. Unit B  
Reno, NV 89511  
APN/Parcel 163-150-09



## LOCATION



10 Mins to Reno-Tahoe  
International Airport

20 Mins to West Reno

10 Mins to 580 US Highway 395

18 Mins Downtown Carson City

20 Mins to Tahoe Reno

Industrial Center (TRIC)

# 9720 S. Virginia St.

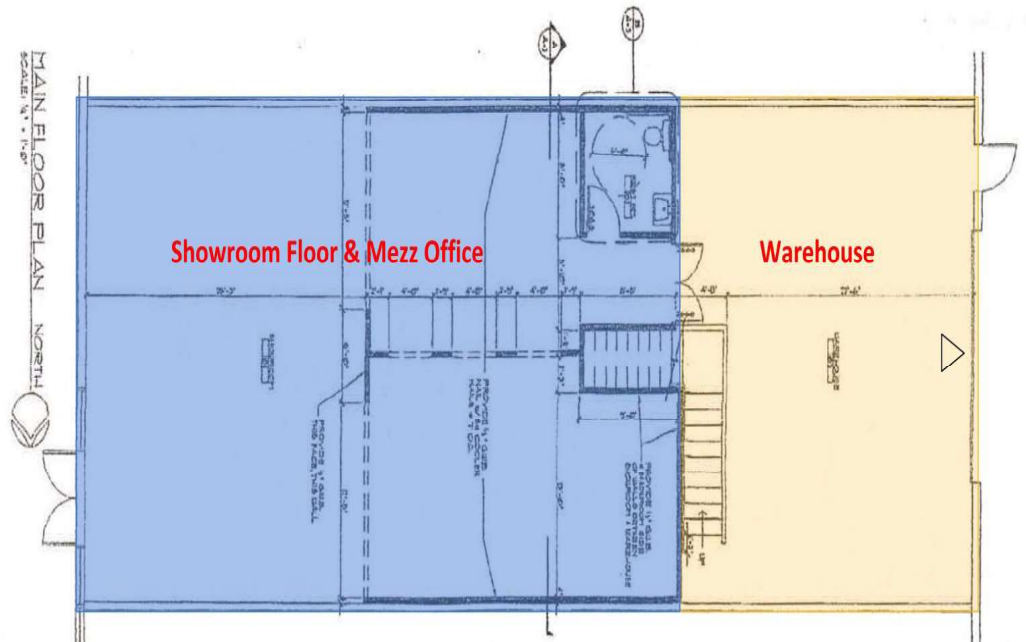
## Unit B - ZONING: P U D

### FOR LEASE

3552 Gross SF +/-

\$1.30 SF/Mo / NNN (Est. \$.20 SF)

9720 S. Virginia St. Unit B  
Reno, NV 89511  
APN/Parcel 163-150-09



**PROPERTY PHOTOS** to come.....

**NOTE:**

**Blue Space above left is totally open**

**Blue Space above right has 30' ceilings and half of the overhead space is mezzanine space for offices, etc.**

Deborah Hayward • 650-279-0102 (cell) • [Deborah@RMDNevada.com](mailto:Deborah@RMDNevada.com)

[www.RMDNevada.com](http://www.RMDNevada.com) 9720 S. Virginia St., Reno, NV 89511 • Page 3 of 4

The information contained herein is believed to be accurate but is not warranted as to its accuracy and may change or be updated without notice. Seller, landlord or investor makes no representation as to the environmental condition of the property and recommends purchaser's or tenant's independent investigation. © Resource Management & Development (RM&D)

# 9720 S. Virginia St.

## Unit B - ZONING: P U D

FOR LEASE

3552 Gross Sq Ft + / -

\$1.30 SF/Mo / NNN (Est. \$.20 SF)

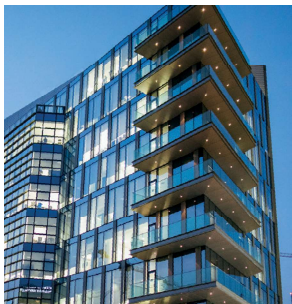
9720 S. Virginia St., Unit B  
Reno, NV 89511  
APN/Parcel 163-150-09



## Your Nevada CRE Specialists

Our clients trust us to deliver innovative, forward-thinking investment and commercial property deals that exceed even the most ambitious expectations. We're strategic specialists driven to create substantial growth and stability via customized solutions for high-net-worth individuals, institutional investors, and mid-to-large sized family-owned businesses.

Resource Management & Development (RM&D) is a one-stop, full-service boutique company with the expertise and network that's in position and ready to make things happen when you're ready to move or expand your Nevada business presence.



Investment



Property Management



Landlord Representation



Tenant Representation

Benefit by partnering with RM&D's Northern Nevada experts in Investment, all sectors of Commercial Property Management, Brokerage, Landlord Representation, and Tenant Representation.

Trust our knowledgeable professionals to deliver innovative, dynamic deals that improve your bottom line. Our educated & professional guidance is fueled by our passion for forming winning, long-term client partnerships.

**CONTACT Deborah Hayward • 650 279 0102 (cell) • Deborah@RMDNevada.com**  
**www.RMDNevada.com • 775 352 7900 • Page 4 of 4**

The information contained herein is believed to be accurate but is not warranted as to its accuracy and may change or be updated without notice. Seller, landlord or investor makes no representation as to the environmental condition of the property and recommends purchaser's or tenant's independent investigation. © Resource Management & Development (RM&D)