

# 829 MADISON AVE



# 829 MADISON AVE



## Third Floor, NE Corner of East 69th Street and Madison Avenue

<b>Size:</b> Third Floor: +/- 1,510 SF	<b>Frontage:</b> Madison Ave: +/- 27.2 Feet 69th Street: +/- 63.10 Feet	<b>Possession:</b> Immediate
---	---	---------------------------------

## Space Highlights

829 Madison Avenue is situated in one of the wealthiest neighborhoods in NYC and the world.

The space, located on the 3rd floor, is in excellent condition and features high ceilings, a large amount of natural light and is easily accessible from both an elevator and stairs.

The area is home to many luxury brands, including Dolce & Gabbana, Isabel Marant, Mackage, Prada, Valentino, Lanvin, Akris, Toteme, Seaman Schepps, Armani and Chanel.

829 Madison Avenue is an ideal location for a gallery, showroom, spa or office.

## Our Neighbors

TOTEME

PRADA

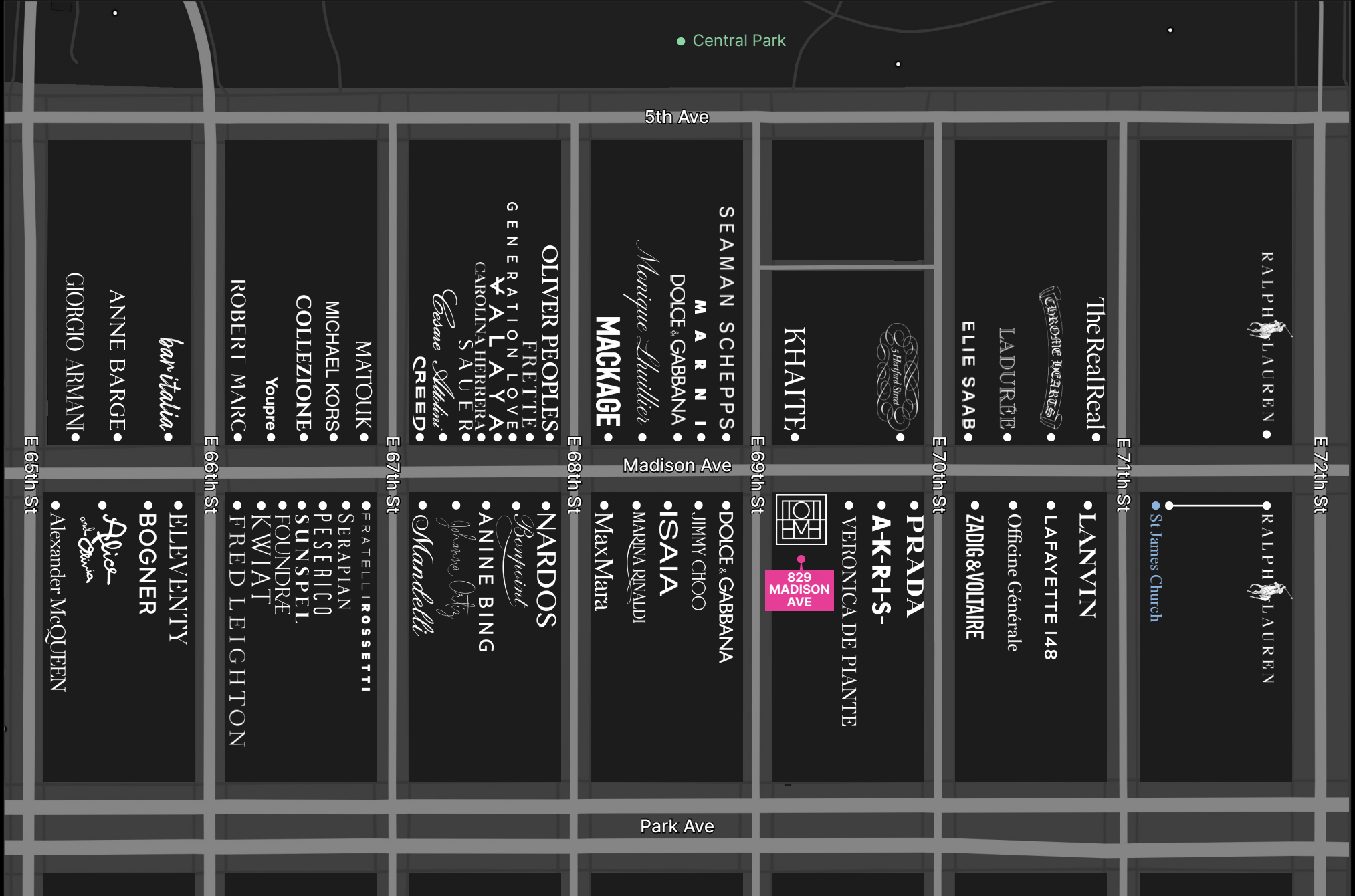
DOLCE & GABBANA

SEAMAN SCHEPPS

LANVIN

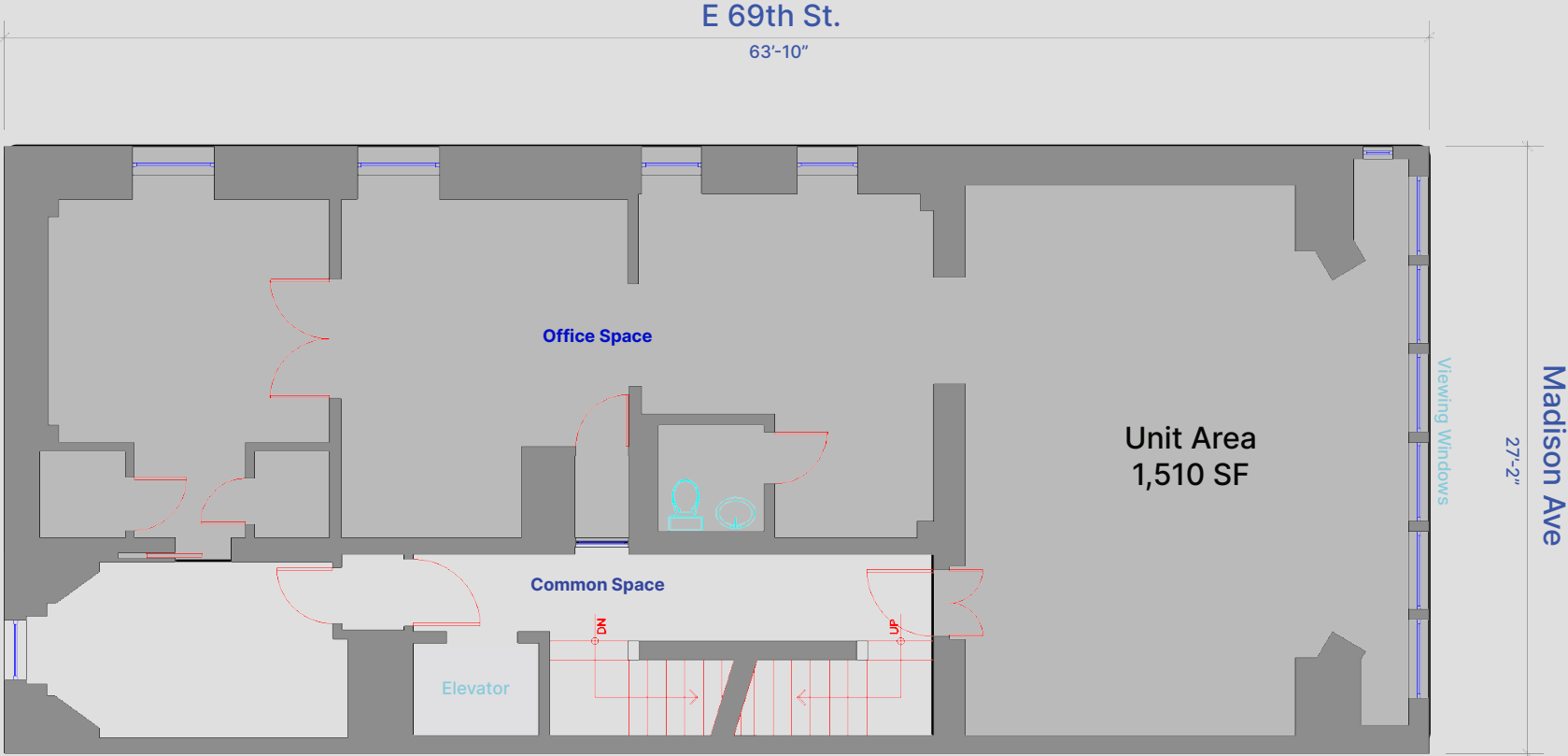
KHAITE

# 829 MADISON AVE



# 829 MADISON AVE

## 3RD FLOOR- FLOOR PLAN



# 829 MADISON AVE



829 Madison ave

# CONTACT US



For questions or for more information about this property, please contact a member of the Capricorn Retail Advisors team.

---

**Andrew Schulman**  
Principal  
aschulman@capricornre.com

**Ryan Schimel**  
Senior Managing Director  
rschimel@capricornre.com

**Jason D. Richter**  
Managing Principal  
jrichter@capricornre.com

More from Capricorn Retail Advisors here  
[www.capricornre.com](http://www.capricornre.com)