



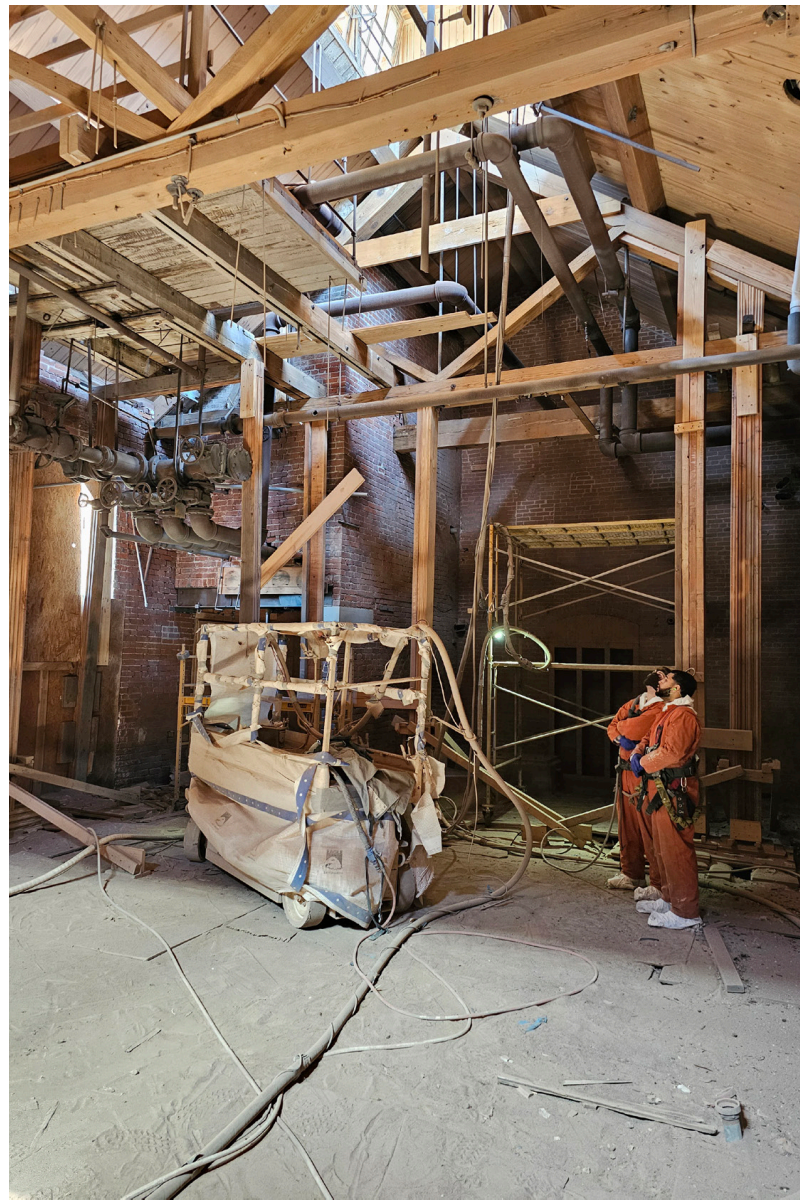
THE LOFTS AT  
**STEHLI SILK MILL**

COMMERCIAL SPACES AVAILABLE  
IDEAL FOR: BREWPUB, DESTINATION RETAIL, CREATIVE OFFICE

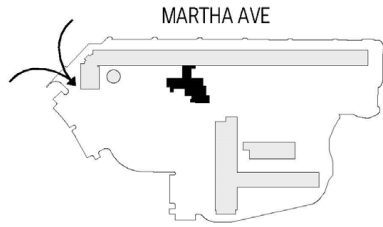
**“BEFORE” PHOTOS- BOILER PLANT EXTERIOR**



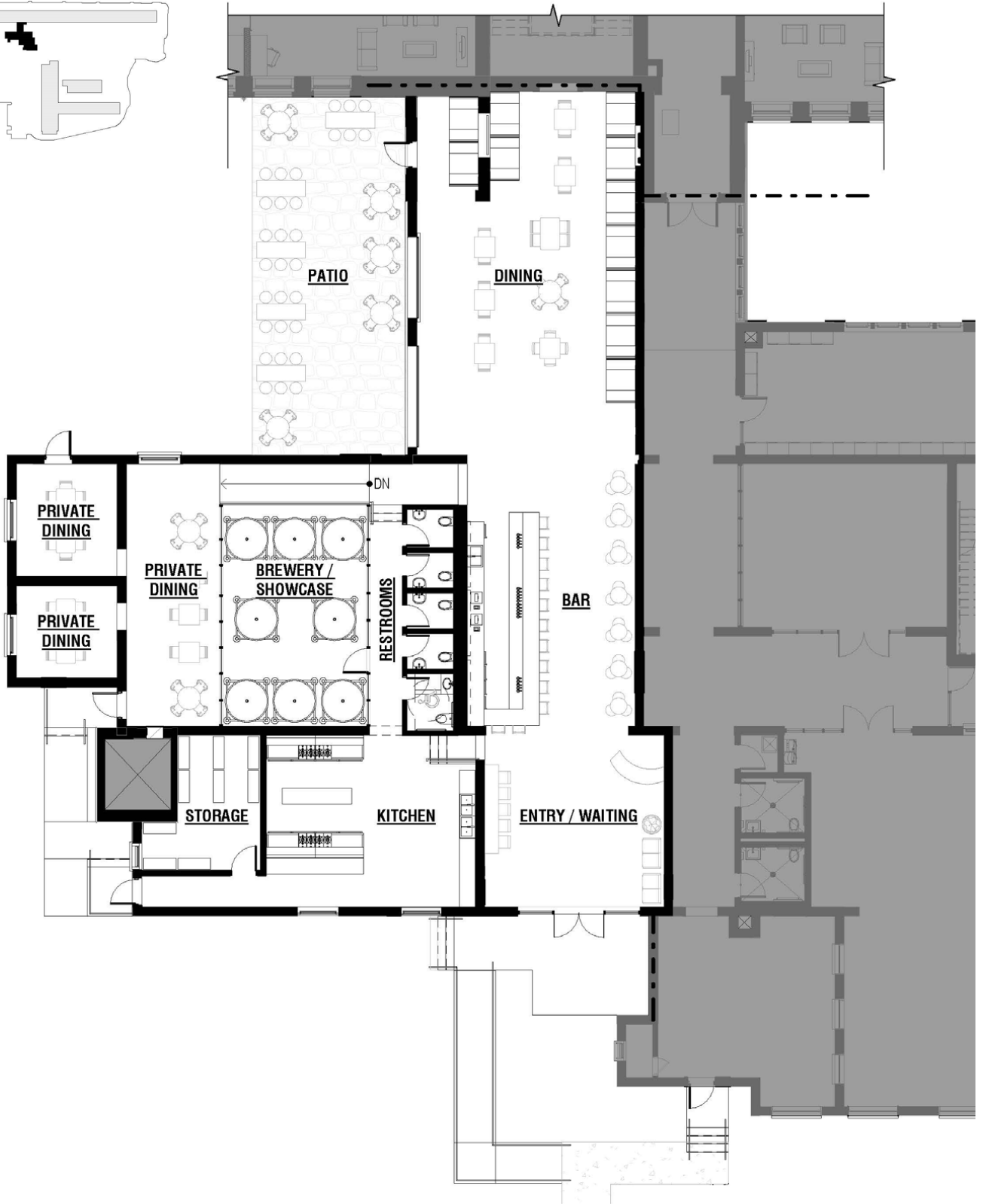
**"BEFORE" PHOTOS- BOILER PLANT INTERIOR**



# BOILER PLANT BREWPUB FLOOR PLAN



KEY PLAN



5,100 SF, GLA (EXCLUDES EXTERIOR SPACE)

BOILER PLANT - CONCEPT A

STEHLI SILK MILL

**BOILER PLANT BREWPUB CONCEPT RENDERING**



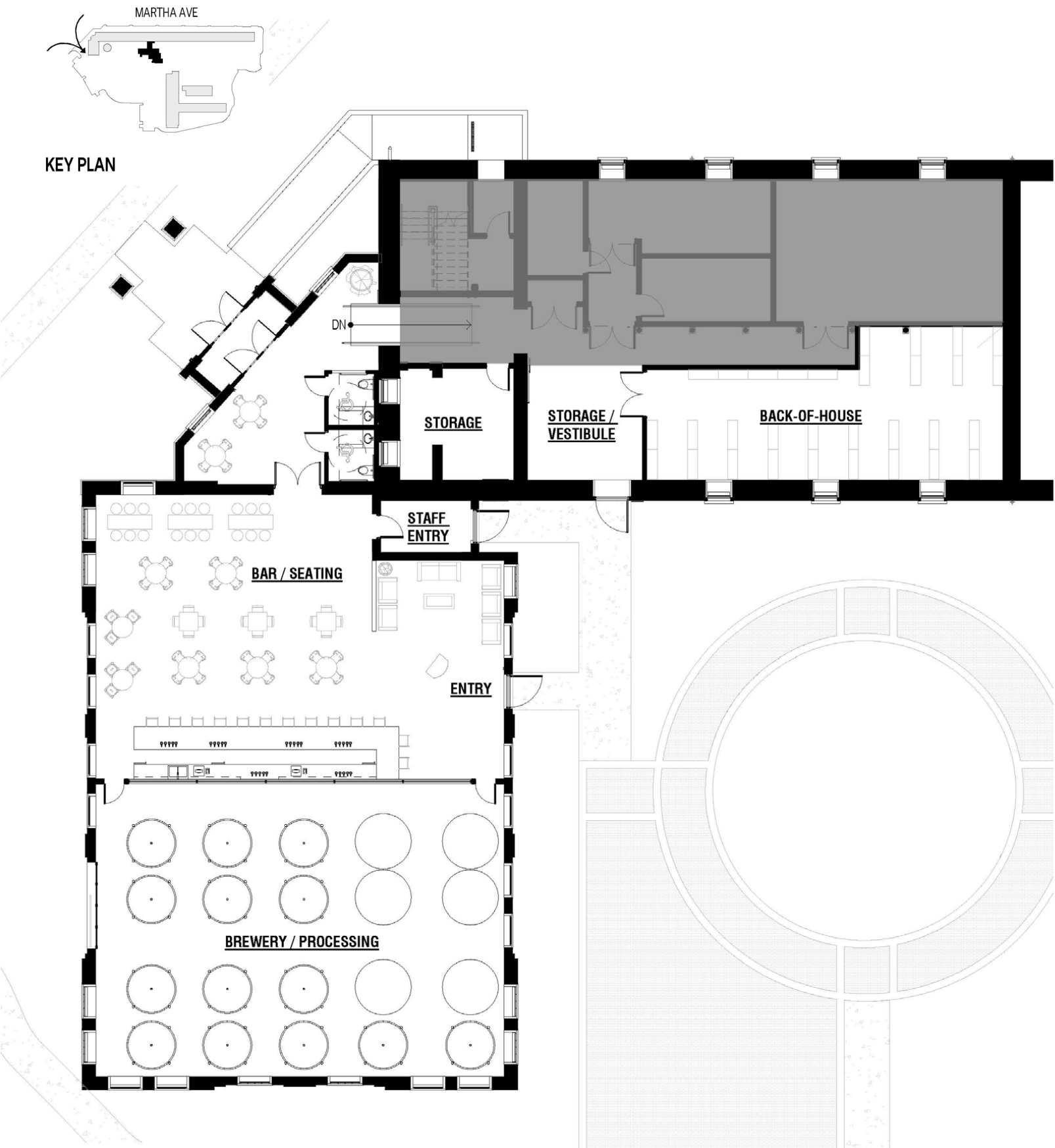
# "BEFORE" PHOTOS- CAFETERIA EXTERIOR



“BEFORE” PHOTOS- CAFETERIA INTERIOR



# CAFETERIA "CONCEPT A" BREWPUB FLOOR PLAN



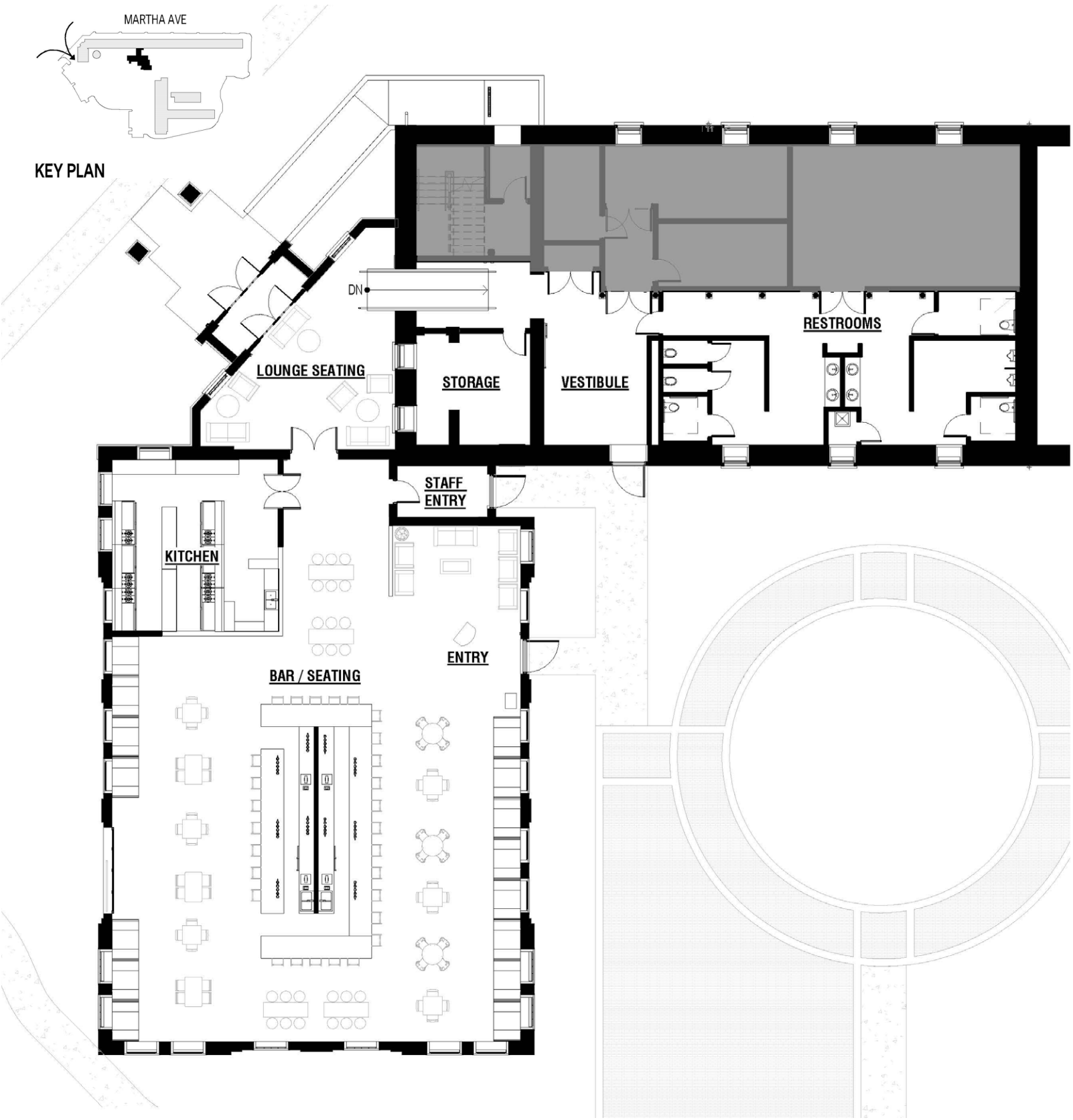
6,815 SF, GLA (EXCLUDES EXTERIOR SPACE)  
MILL 21 - CONCEPT A  
STEHLI SILK MILL



# CAFETERIA "CONCEPT A" BREWPUB RENDERING



# CAFETERIA "CONCEPT B" BREWPUB FLOOR PLAN



7,290 SF, GLA (EXCLUDES EXTERIOR SPACE)

MILL 21 - CONCEPT B

STEHLI SILK MILL

# CAFETERIA "CONCEPT B" BREWPUB RENDERING





THE LOFTS AT  
**STEHLI SILK MILL**

LANCASTER PA

For leasing inquiries, call: 443-895-0077 or email at: [Angelo@CAMbuilds.com](mailto:Angelo@CAMbuilds.com)

701 Martha Avenue | [StehliMill.com](http://StehliMill.com)

