



**CUSHMAN &
WAKEFIELD**

FOR SUBLEASE

395 Oyster Point Blvd - Suite 225

South San Francisco, CA

PLUG & PLAY SUBLEASE

4,364 SF Class A Office Sublease - Suite 225

PROPERTY HIGHLIGHTS

- Plug and play sublease
- Modern furniture with sit-stand workstations
- Glass double door entry off lobby
- Extensive window line with lots of natural light
- Kitchenette with dishwasher and refrigerator
- Phone room, four small conference rooms, storage, server room and open space
- Miles of waterfront jogging trails
- 3.4/1000 parking
- Building amenities include conference centers, fitness center with showers and on-site deli
- **Sublease through November 30, 2023**



Shannon Chircop

Director

+1 650 931 2228

shannon.chircop@cushwake.com

LIC #01872259

Marc Pope

Executive Director

+1 650 401 2131

marc.pope@cushwake.com

LIC #01474483

1350 Bayshore Hwy., Suite 900

Burlingame, CA

main +1 650 347 3700

fax +1 650 347 4307

cushmanwakefield.com

Cushman & Wakefield Copyright 2020. No warranty or representation, express or implied, is made to the accuracy or completeness of the information contained herein, and same is submitted subject to errors, omissions, change of price, rental or other conditions, withdrawal without notice, and to any special listing conditions imposed by the property owner(s). As applicable, we make no representation as to the condition of the property (or properties) in question.



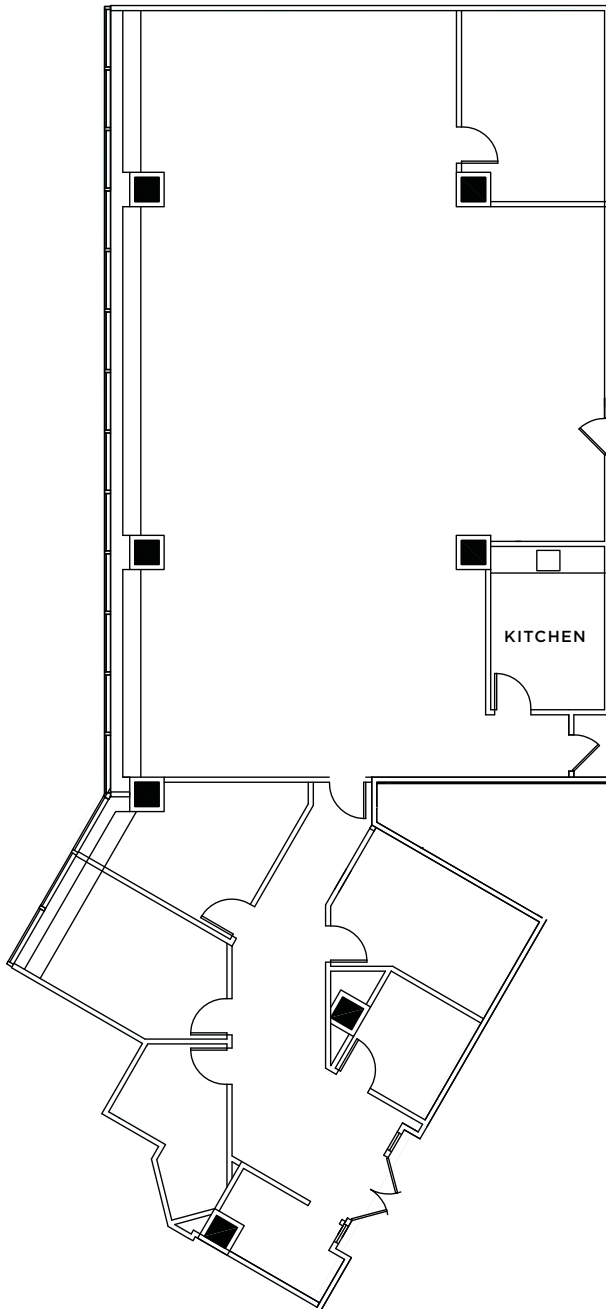
**CUSHMAN &
WAKEFIELD**

FOR SUBLEASE

395 Oyster Point Blvd - Suite 225

South San Francisco, CA

Floor Plan



Shannon Chircop

Director

+1 650 931 2228

shannon.chircop@cushwake.com

LIC #01872259

Marc Pope

Executive Director

+1 650 401 2131

marc.pope@cushwake.com

LIC #01474483

1350 Bayshore Hwy., Suite 900

Burlingame, CA

main +1 650 347 3700

fax +1 650 347 4307

cushmanwakefield.com

Cushman & Wakefield Copyright 2020. No warranty or representation, express or implied, is made to the accuracy or completeness of the information contained herein, and same is submitted subject to errors, omissions, change of price, rental or other conditions, withdrawal without notice, and to any special listing conditions imposed by the property owner(s). As applicable, we make no representation as to the condition of the property (or properties) in question.