

**FOR LEASE**

5111 Santa Fe Street  
San Diego, CA 92109



# La Jolla Business Center For Lease

**EMMETT CAHILL**  
619.243.8470  
ecahill@qfcre.com  
BRE #02033604

**PETER WRIGHT**  
619.243.8450  
pwright@qfcre.com  
BRE #01846272

*The information contained here has been obtained from sources considered to be reliable, but no guarantee of its accuracy is made by this company. In addition, no representation is made respecting zoning, condition of title, dimensions or any matters of a legal or environmental nature. Such matters should be referred to legal counsel for determination. Terms and conditions are subject to change without prior notice. Subject to errors and omissions.*





## SPACE AVAILABLE

430 - 1,360 SF

## LEASE RATE

\$1.50 PSF + Electricity

## PROPERTY HIGHLIGHTS

- Second floor offices
- Excellent access
- Freeway visible

SUITE	SIZE	RATE
203	1,115 SF	\$1.50 PSF + Elec.
205-207	1,145 SF	\$1.50 PSF + Elec.
219-223	2,357 SF	\$1.50 PSF + Elec.
217	430	\$1.50 PSF + Elec.
213-215	1,615 SF	\$1.50 PSF + Elec.

**EMMETT CAHILL**  
619.243.8470  
ecahill@qfcre.com  
BRE #02033604

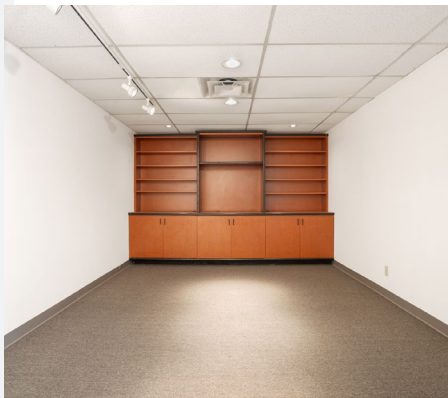
**PETER WRIGHT**  
619.243.8450  
pwright@qfcre.com  
BRE #01846272

*The information contained here has been obtained from sources considered to be reliable, but no guarantee of its accuracy is made by this company. In addition, no representation is made respecting zoning, condition of title, dimensions or any matters of a legal or environmental nature. Such matters should be referred to legal counsel for determination. Terms and conditions are subject to change without prior notice. Subject to errors and omissions.*





# PHOTOS



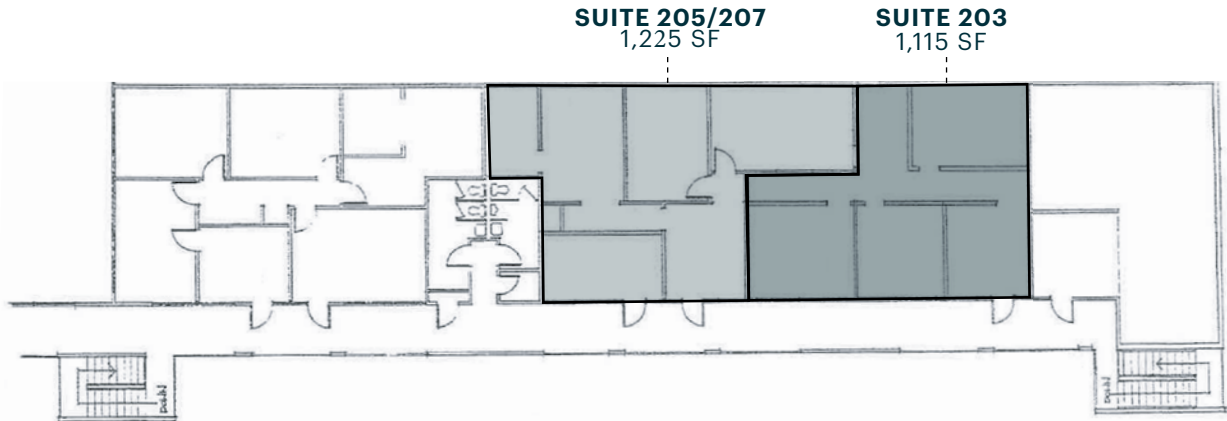
**EMMETT CAHILL**  
619.243.8470  
ecahill@qfcre.com  
BRE #02033604

**PETER WRIGHT**  
619.243.8450  
pwright@qfcre.com  
BRE #01846272

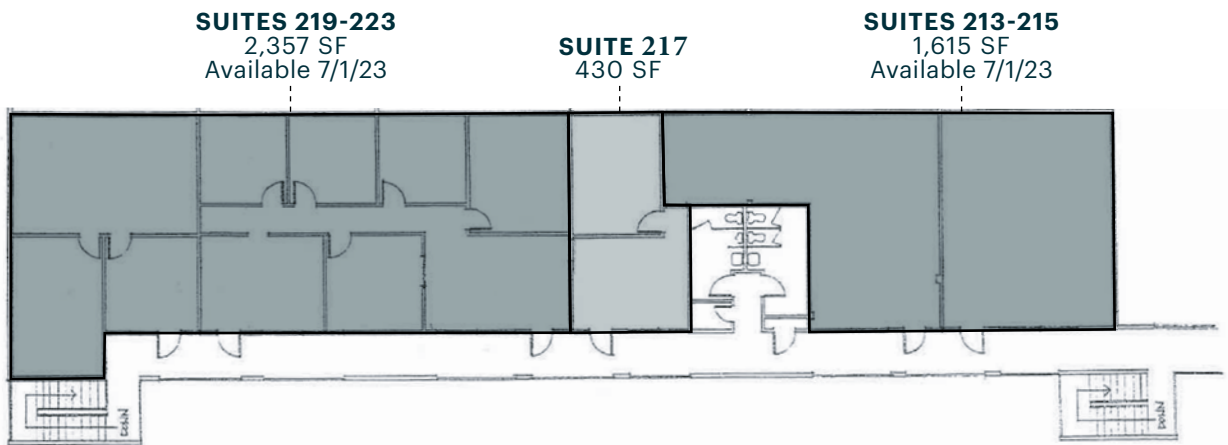
*The information contained here has been obtained from sources considered to be reliable, but no guarantee of its accuracy is made by this company. In addition, no representation is made respecting zoning, condition of title, dimensions or any matters of a legal or environmental nature. Such matters should be referred to legal counsel for determination. Terms and conditions are subject to change without prior notice. Subject to errors and omissions.*

# FLOOR PLAN

## SECOND FLOOR - SOUTH



## SECOND FLOOR - NORTH



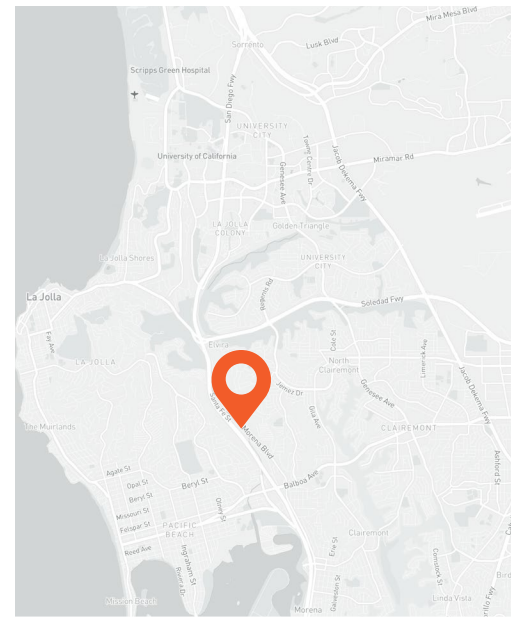
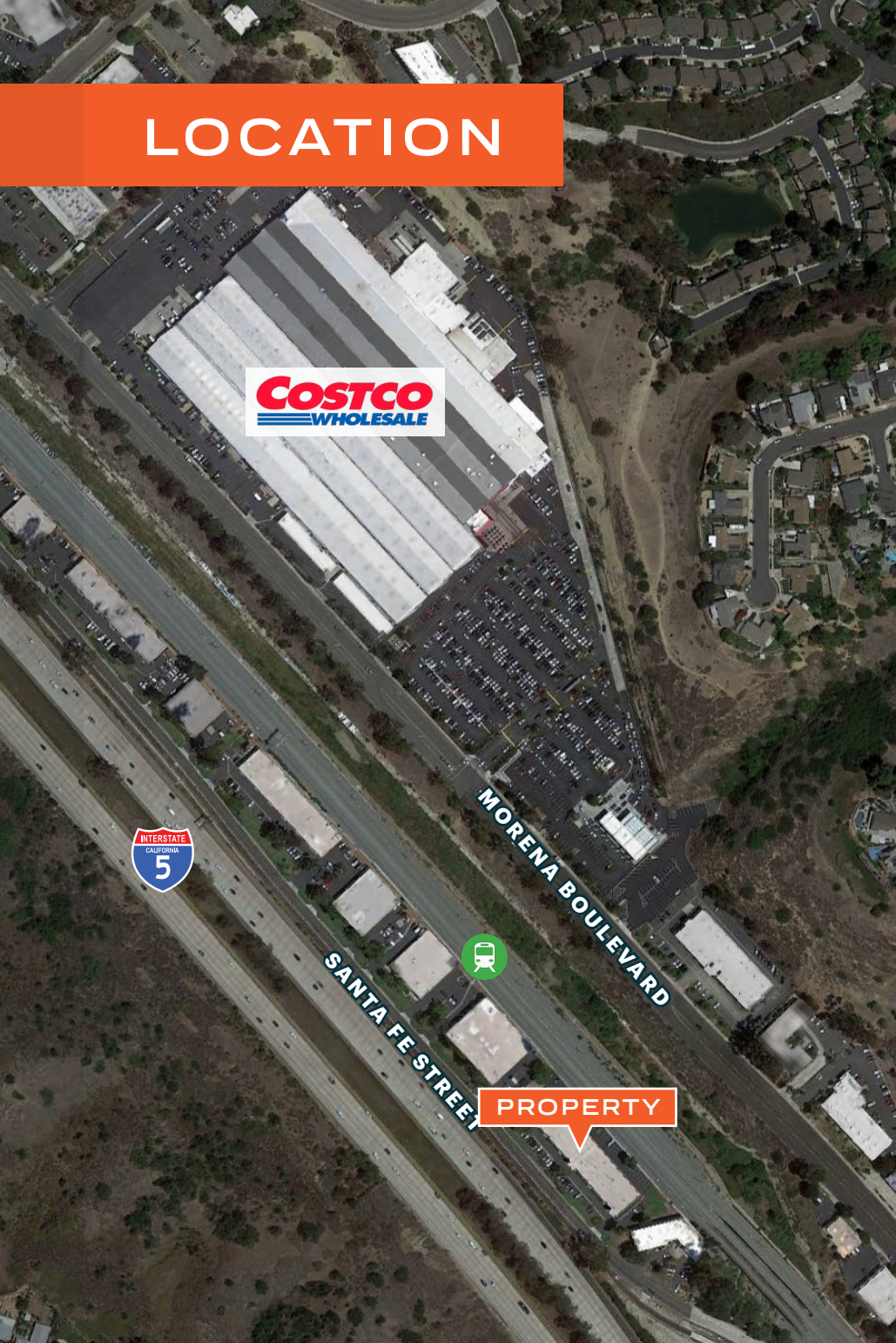
**EMMETT CAHILL**  
619.243.8470  
ecahill@qfcre.com  
BRE #02033604

**PETER WRIGHT**  
619.243.8450  
pwright@qfcre.com  
BRE #01846272

*The information contained here has been obtained from sources considered to be reliable, but no guarantee of its accuracy is made by this company. In addition, no representation is made respecting zoning, condition of title, dimensions or any matters of a legal or environmental nature. Such matters should be referred to legal counsel for determination. Terms and conditions are subject to change without prior notice. Subject to errors and omissions.*



# LOCATION



Centrally located near the communities of Clairemont, Pacific Beach, La Jolla, University City and Bay Park, which convenient access to I-5 and Hwy-52. Property is in close Proximity to New Balboa Avenue Trolley Station (1.5 Miles) Connecting to UTC.

**\$6.16B**

Consumer spending within 5 miles

**350,022**

Employee population within 5 miles

**EMMETT CAHILL**  
619.243.8470  
ecahill@qfcre.com  
BRE #02033604

**PETER WRIGHT**  
619.243.8450  
pwright@qfcre.com  
BRE #01846272

*The information contained here has been obtained from sources considered to be reliable, but no guarantee of its accuracy is made by this company. In addition, no representation is made respecting zoning, condition of title, dimensions or any matters of a legal or environmental nature. Such matters should be referred to legal counsel for determination. Terms and conditions are subject to change without prior notice. Subject to errors and omissions.*



**FOR LEASE**

5111 Santa Fe Street  
San Diego, CA 92109



# Contact Information

**QFC REAL ESTATE**

1495 Pacific Highway, Suite 450  
San Diego, CA 92101  
619.243.8454 • [qfcre.com](http://qfcre.com)

**EMMETT CAHILL**

619.243.8470  
[ecahill@qfcre.com](mailto:ecahill@qfcre.com)  
BRE #02033604

**PETER WRIGHT**

619.243.8450  
619.243.8450  
619.243.8450  
[pwright@qfcre.com](mailto:pwright@qfcre.com)

*The information contained here has been obtained from sources considered to be reliable, but no guarantee of its accuracy is made by this company. In addition, no representation is made respecting zoning, condition of title, dimensions or any matters of a legal or environmental nature. Such matters should be referred to legal counsel for determination. Terms and conditions are subject to change without prior notice. Subject to errors and omissions.*