

METROPOLIS REALTY
RESIDENTIAL & COMMERCIAL
SALES | LEASING | MANAGEMENT
29-17 23RD AVENUE ASTORIA NY 11105

Cell. 917.531.4029 Tel. 718.545.9700 Email. Nick@InAstoriaNY.com

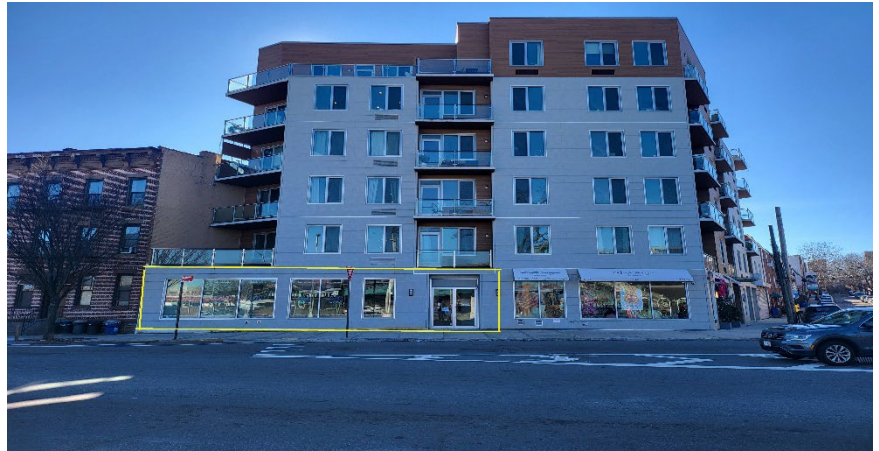


RETAIL SPACE FOR LEASE

32-06 Astoria Blvd

Astoria NY 11102

- 2,900 sq. ft Ground Floor
- + 535 sq. ft Cellar Space
- Superior High Pedestrian & Vehicle Traffic
- Open Floor Plan / Multiple Layout Options
- ADA Complaint Throughout
- True Corner Location
- New Construction
- Sprinkler/Monitored Central Fire Alarm
- Outstanding Frontage



Superior Location Ground Floor Space Available for lease on high traffic block in dense residential neighborhood on the main intersection of Astoria Boulevard and 32nd Street. Perfectly Positioned Angled Corner Property boasts a commanding and **unobstructed** 100 linear feet of frontage.

Location provides direct and unobstructed exposure to with direct access and line of sight to the exits to the RFK (Tri-Boro) Bridge, the Grand Central Parkway, the Brooklyn Queens Expressway, the Astoria Boulevard stop on the N & W line, and the M60 bus to LAG Airport and/or the Upper East and West Side of Manhattan.

