

# St. Francis Square Shopping Center

*Seafood City Grocery Anchored Retail Development in Daly City, CA*

11-63 Saint Francis Square | Daly City, CA



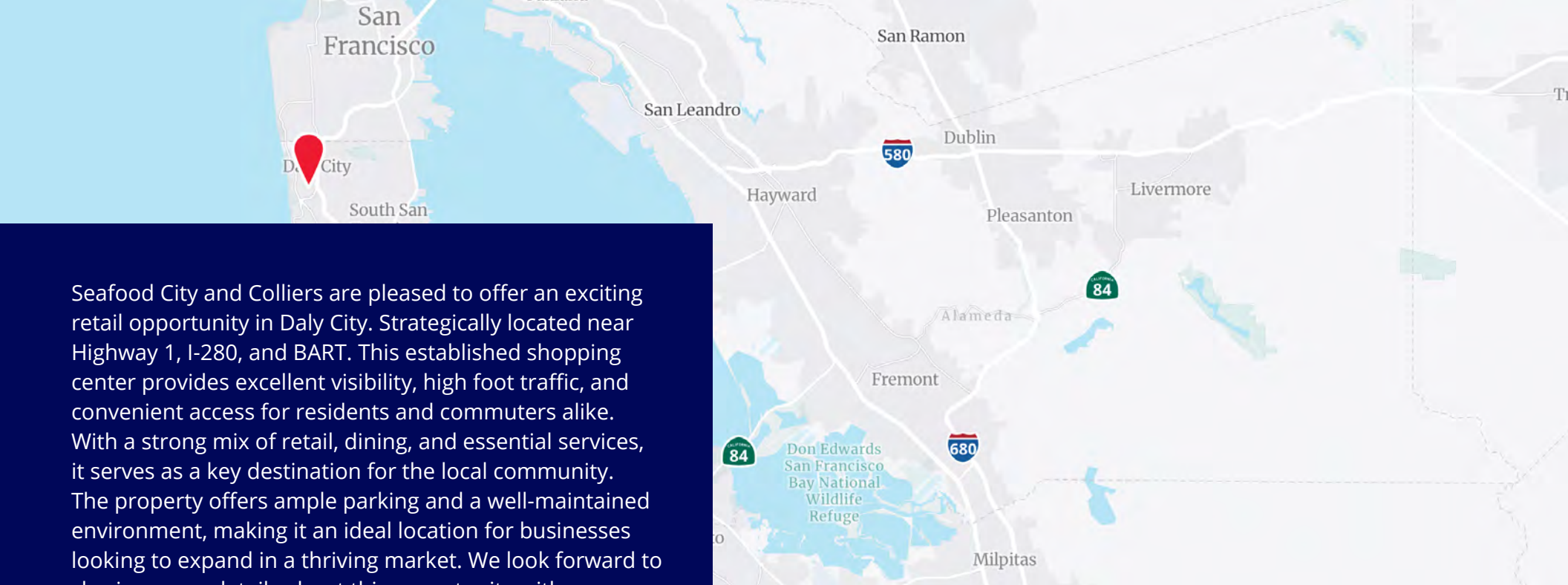
Contact Brokers

**Joe Leabres**

Vice President  
CA License No. 01483259  
joe.leabres@colliers.com  
+1 408 520 9000









**Lauren Hwang**

Associate  
CA License No. 02200380  
lauren.hwang@colliers.com  
+1 925 279 4641



Seafood City and Colliers are pleased to offer an exciting retail opportunity in Daly City. Strategically located near Highway 1, I-280, and BART. This established shopping center provides excellent visibility, high foot traffic, and convenient access for residents and commuters alike. With a strong mix of retail, dining, and essential services, it serves as a key destination for the local community. The property offers ample parking and a well-maintained environment, making it an ideal location for businesses looking to expand in a thriving market. We look forward to sharing more details about this opportunity with you.

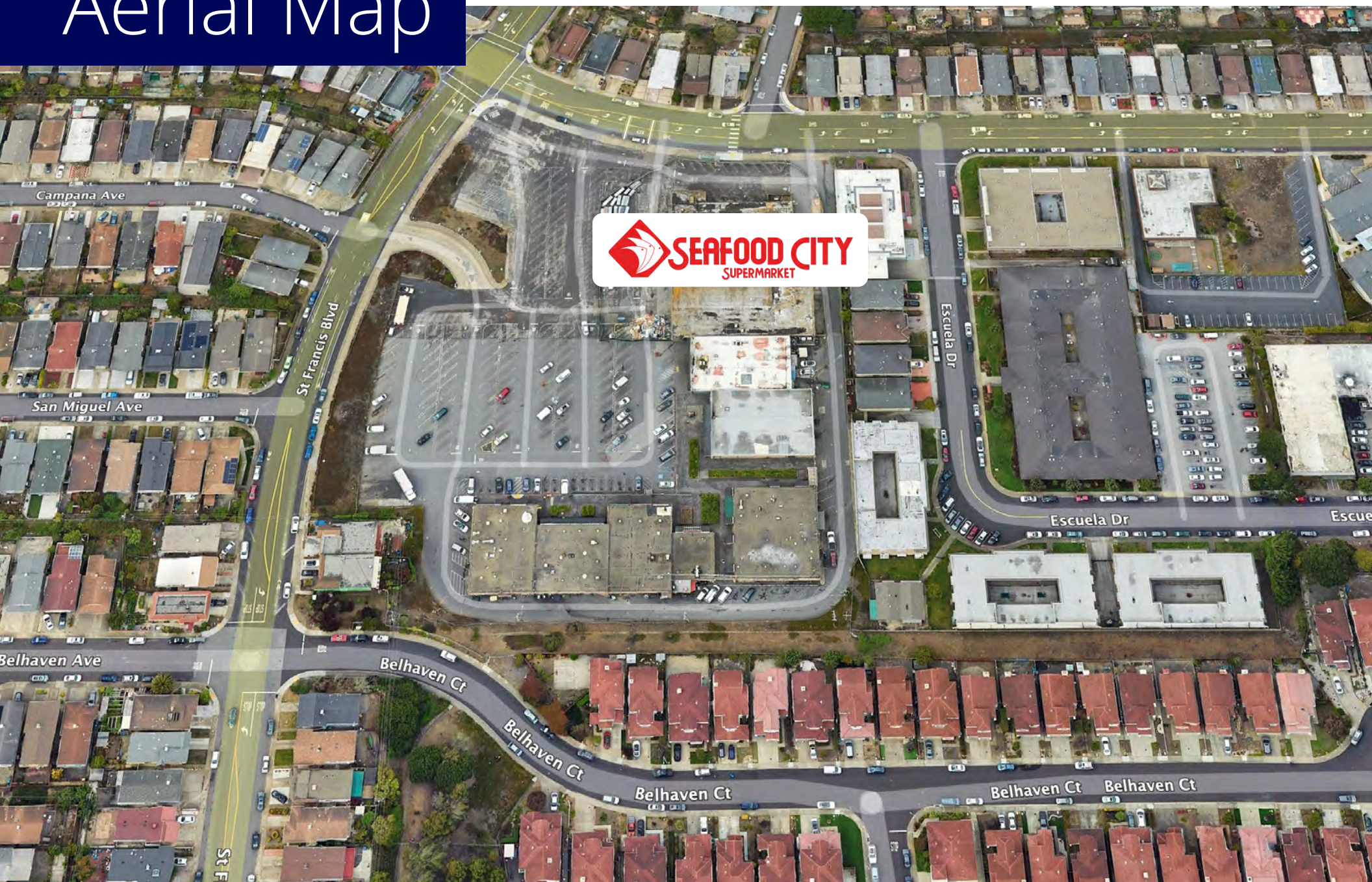
### Demographics

	1 mile	3 miles	5 miles
 <b>Total Population</b>	28,689	180,781	412,078
 <b>Daytime Population</b>	23,360	131,106	314,246
 <b>Total Households</b>	8,248	56,852	134,196
 <b>Median HH Income</b>	\$117,399	\$118,798	\$123,497
 <b>Education</b> <i>(Some College or Degree)</i>	69%	70%	70%
 <b>Total Businesses</b>	833	3,609	11,212
 <b>Total Employees</b>	9,699	42,342	112,411
 <b>White Collar Employees</b>	72%	69%	70%

### Property Features

<b>Location</b>	Southwest Corner of St. Francis Blvd. & Southgate Ave. near the Highway 1/ I-280 interchange
<b>Cross Streets</b>	St. Francis Blvd. & Southgate Ave
<b>Land Area</b>	±5.88 Acres
<b>Available</b>	Retail & Restaurant Spaces <ul style="list-style-type: none"><li>• Pad 2: Various spaces</li><li>• Pad 3: Various spaces</li><li>• Pad 5: Potential drive-thru</li></ul>
<b>Parking</b>	273 spaces

# Aerial Map



# Location Overview

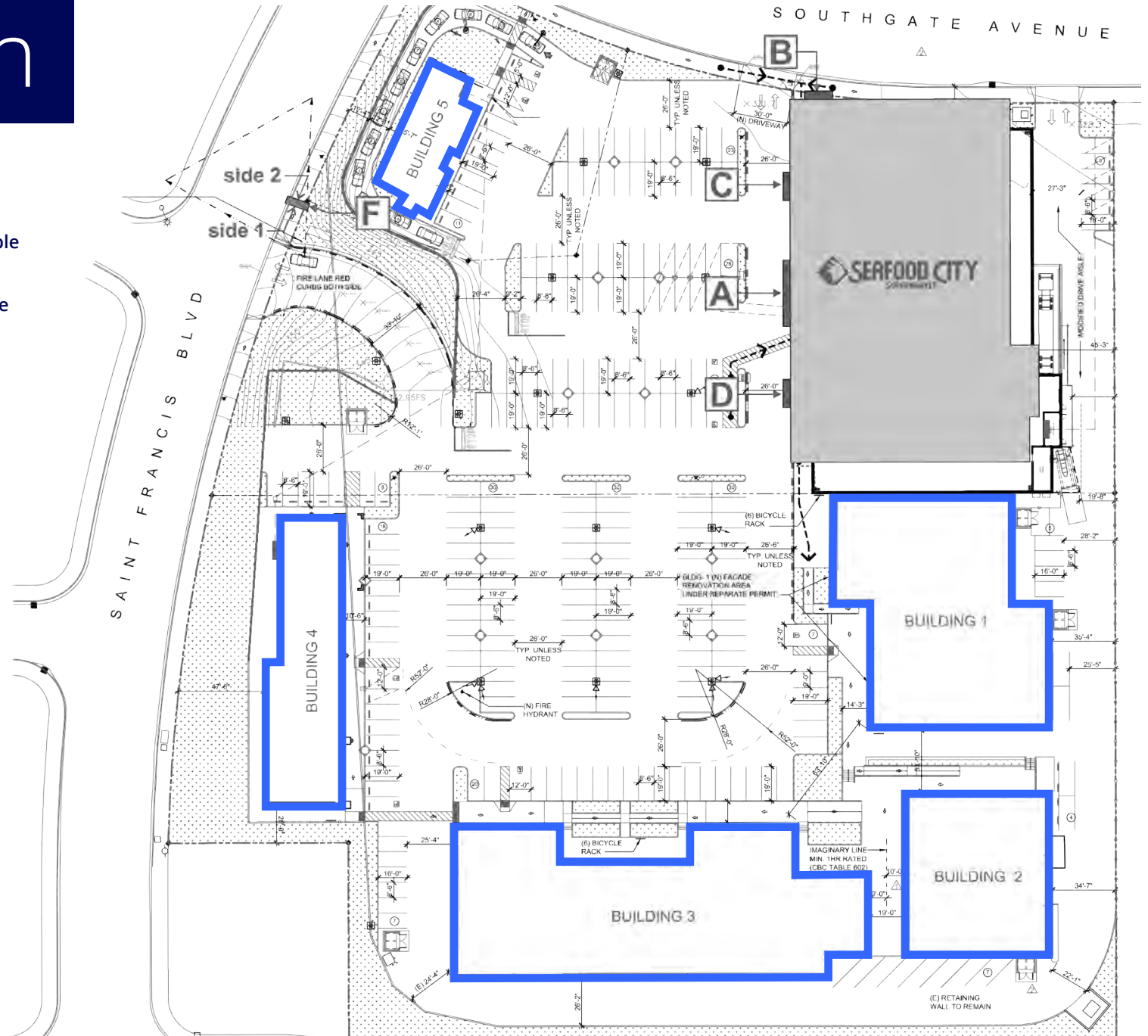
The Daly City neighborhood near the intersection of I-280, Highway 1, and Skyline Boulevard is a scenic, suburban area with a mix of residential communities, shopping centers, and outdoor attractions. Westborough and the surrounding St. Francis Square Shopping Center serve as key retail hubs, featuring popular spots like Philz Coffee and Jollibee, while Serramonte Center offers major retailers such as Target, Dick's Sporting Goods, and Uniqlo. The area is also known for its proximity to outdoor spaces, including the scenic Sweeney Ridge Trail, which offers stunning views of the Bay Area, and Mussel Rock Park, a coastal spot popular for hiking and paragliding. Skyline College, a well-regarded community college, sits just west of the intersection, adding an academic presence. With easy access to both the Peninsula and the Pacific coast, this neighborhood blends convenience with natural beauty.



# Site Plan

## Property Details

- Potential divisible or expandable depending on suite
- Building 5 | Potential new drive thru building



# Available Units

## Suite Availability

### Building 1:

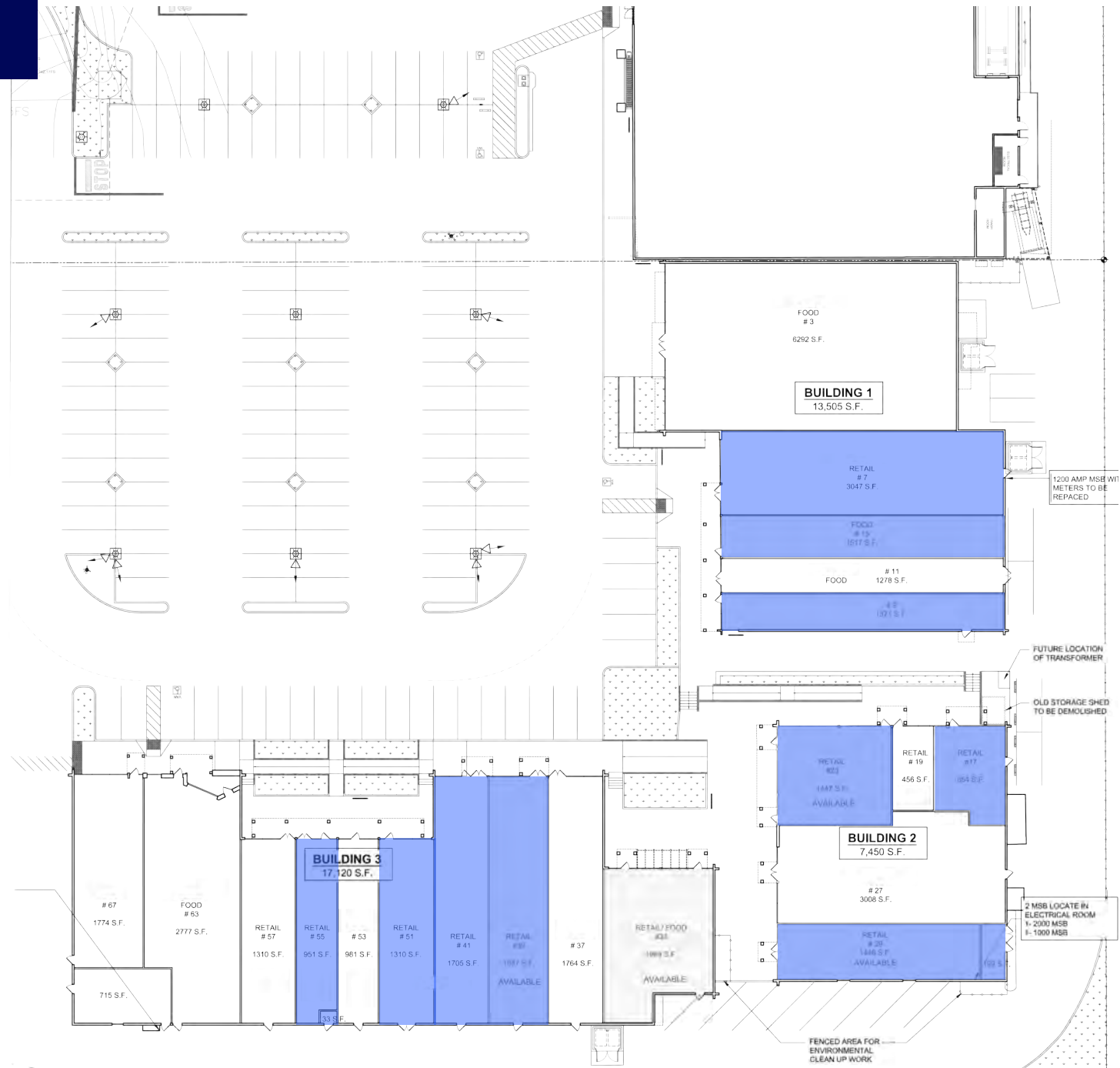
7	±3,047 SF (potential restaurant space)
9	±1,371 SF
15	±1,517 SF

### Building 2:

17	±854 SF
23	±1,447 SF
29	±1,486 SF

### Building 3:

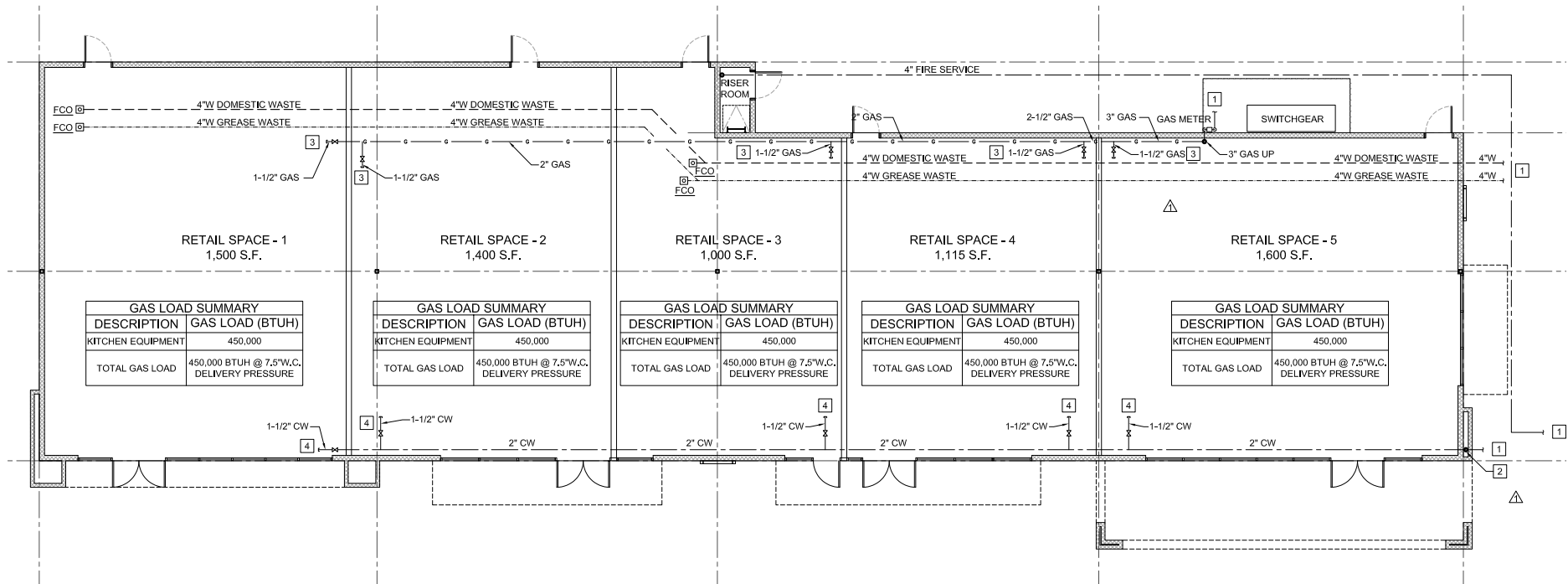
39	±1,837 SF
41	±1,705 SF
51	±1,310 SF
55	±951 SF



# Building 4 | New Construction

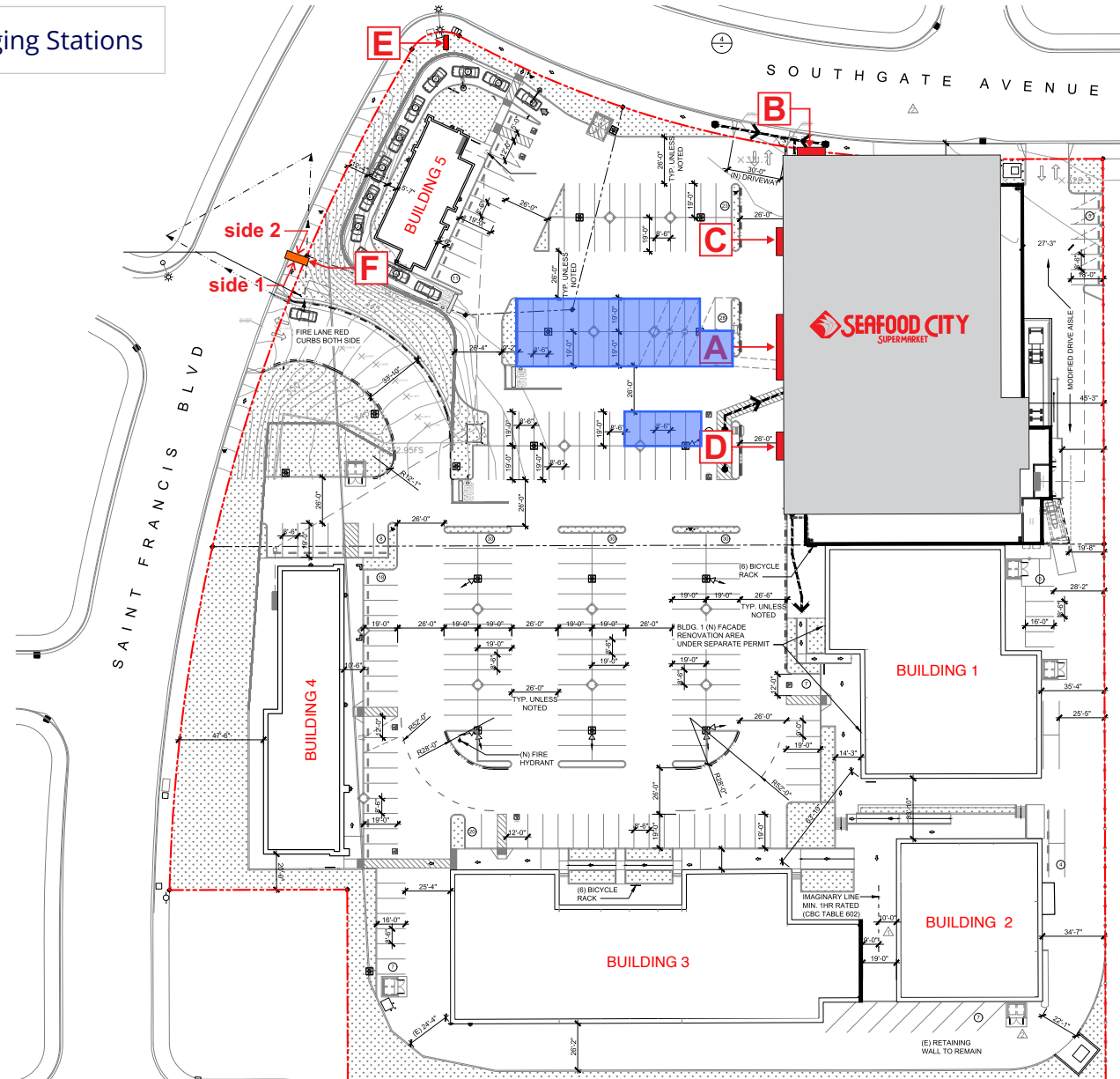
## Building Details

- New medical office building being built
- Great for vet services, urgent care, dentists etc.



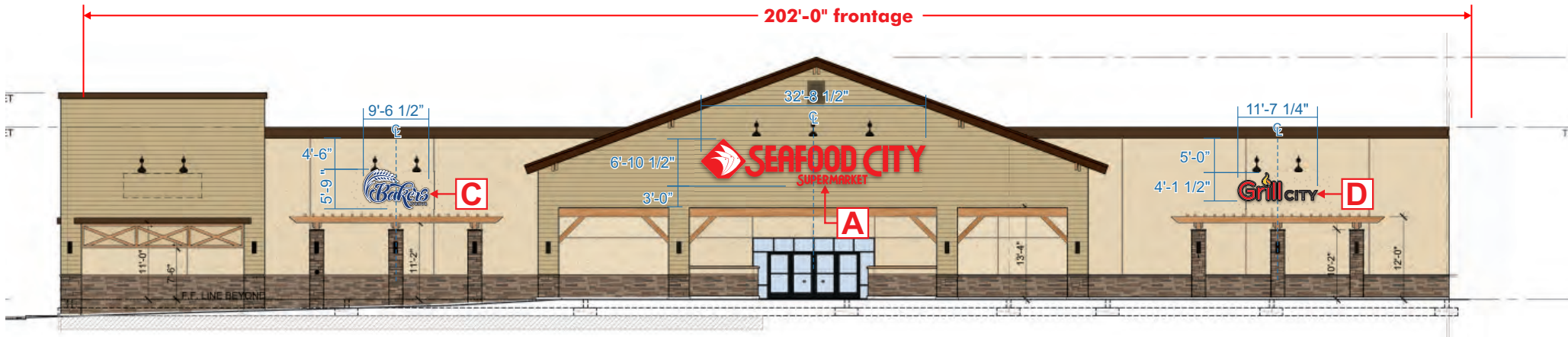
# Proposed Tesla Charging Stations

 Proposed Tesla Charging Stations

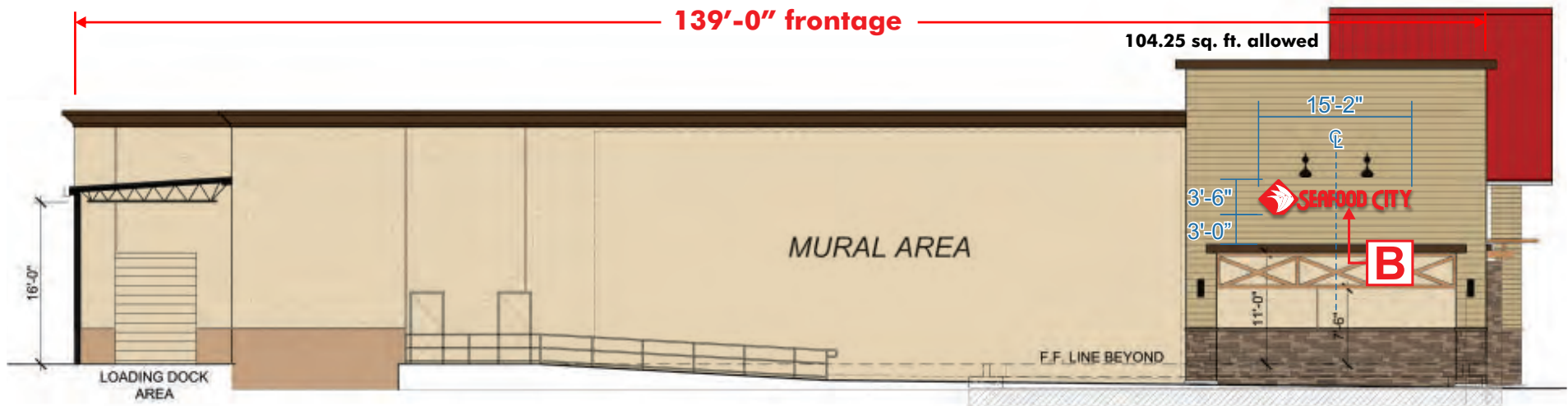


# Seafood City Building | Elevations

West Elevation

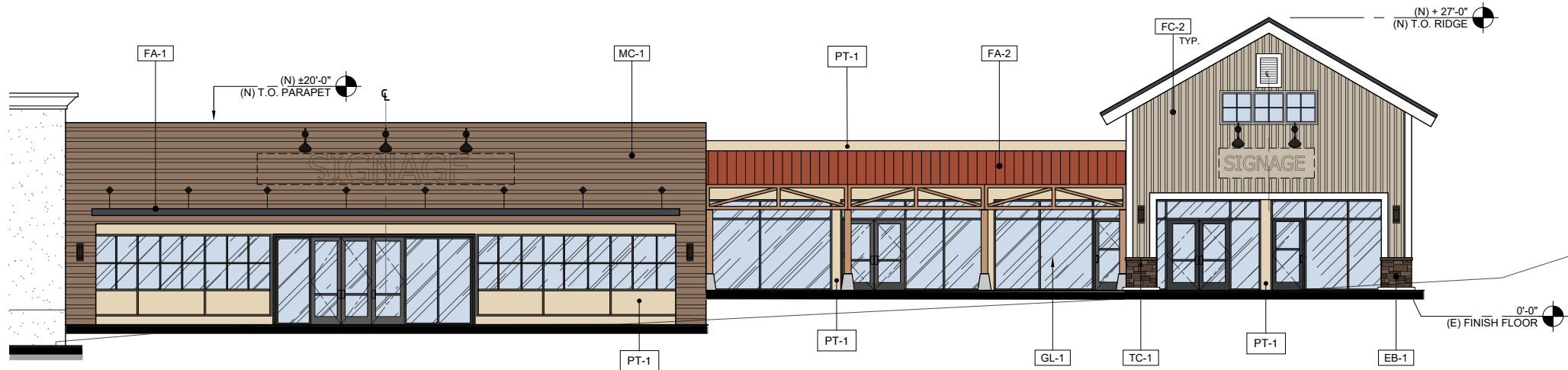


North Elevation

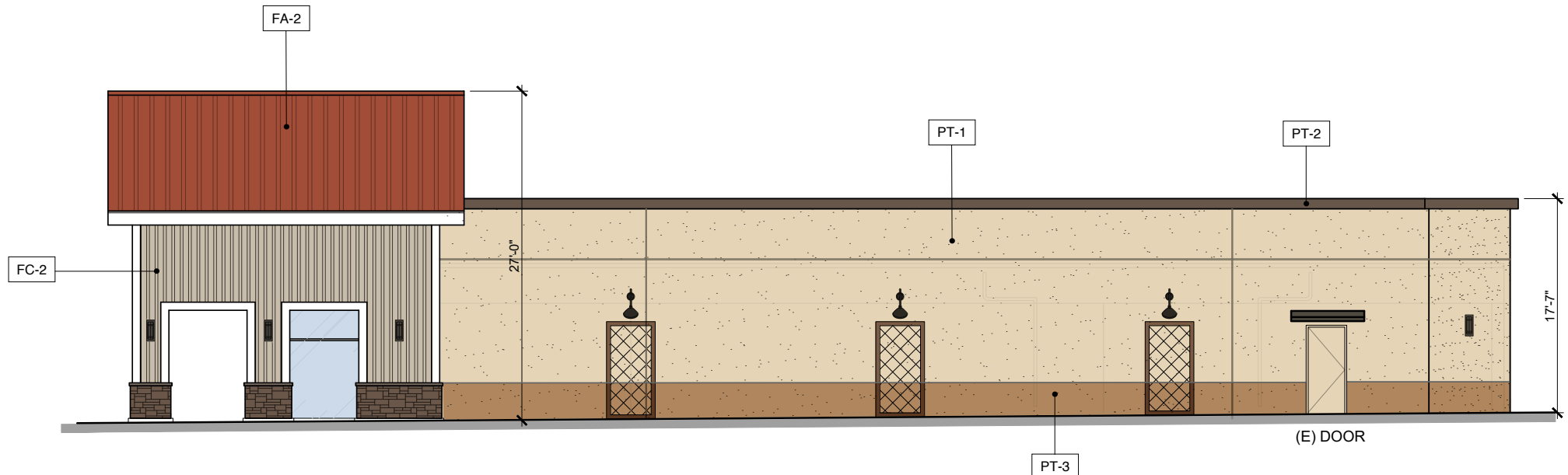


# Building 1 | Elevations

West Elevation

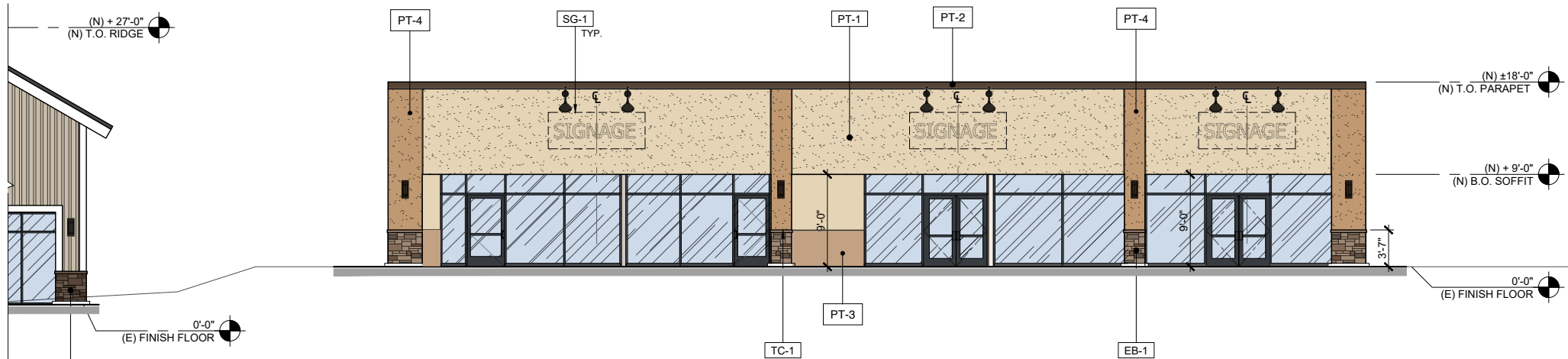


South Elevation

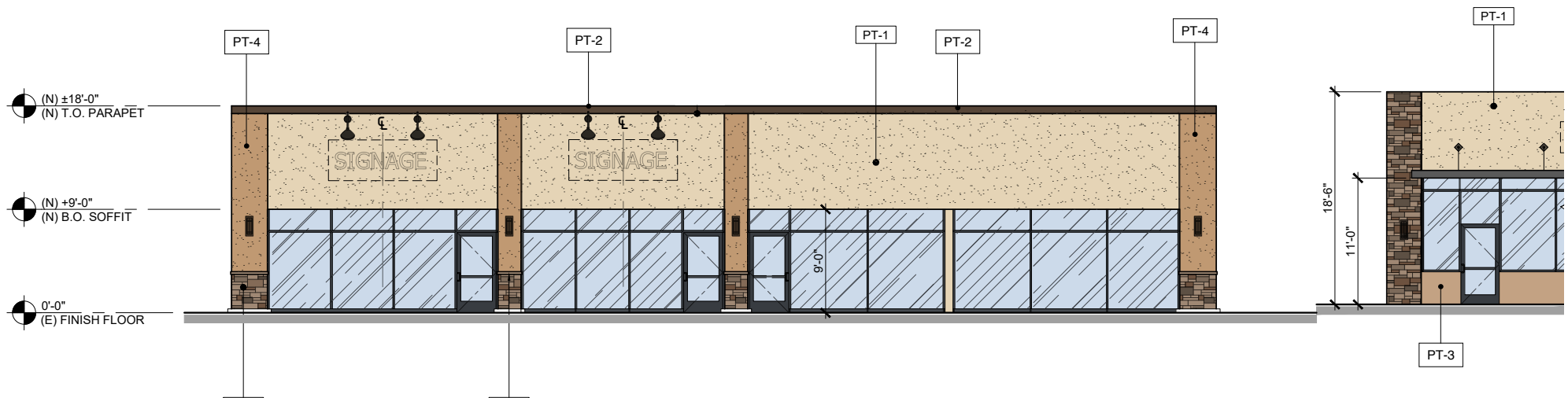


# Building 2 | Elevations

North Elevation

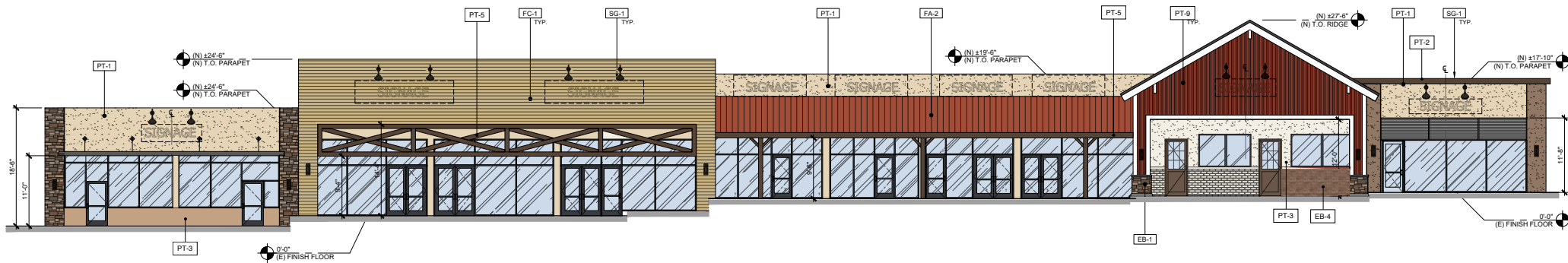


West Elevation

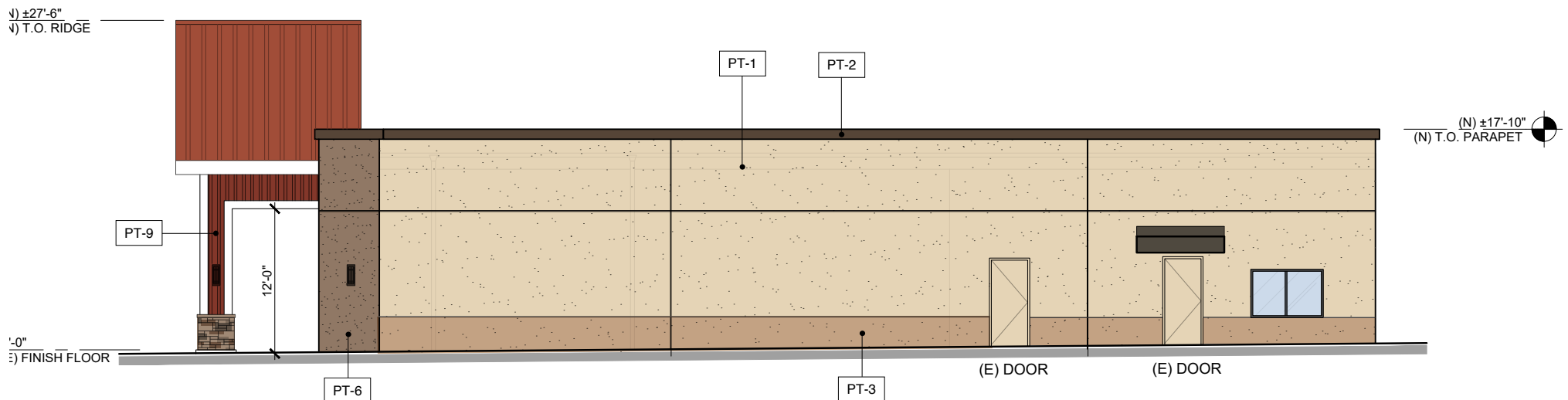


# Building 3 | Elevations

North Elevation

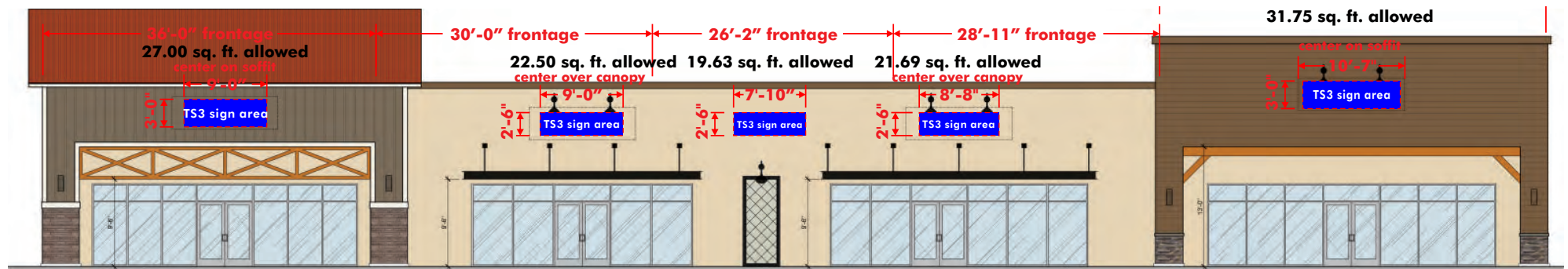


West Elevation



# Building 4 | Elevation

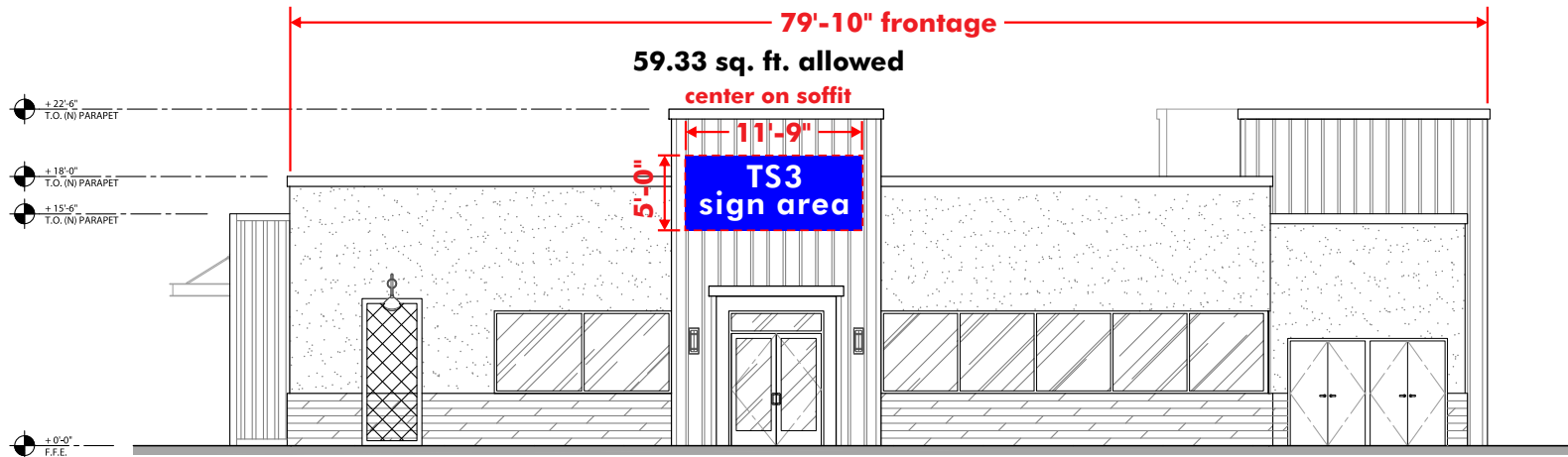
East Elevation



East Elevation - Scale: 3/32" = 1'-0"

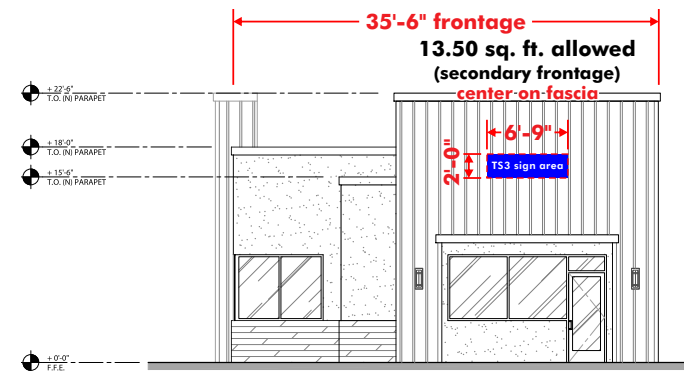
# Building 5 | Elevation

East Elevation

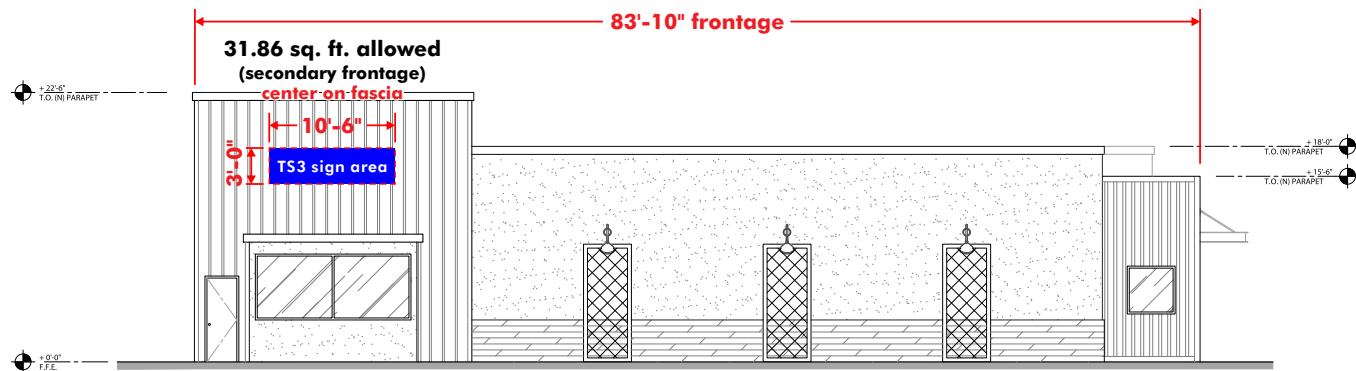


East Elevation - Scale: 3/32" = 1'-0"

North & West Elevation



North Elevation - Scale: 3/32" = 1'-0"



West Elevation - Scale: 3/32" = 1'-0"



# St. Francis Square Shopping Center

## *Seafood City Grocery Anchored Retail Development in Daly City, CA*

11-63 Saint Francis Square | Daly City, CA

### Contact Brokers

#### **Joe Leabres**

Vice President

CA License No. 01483259

joe.leabres@colliers.com

+1 408 520 9000

#### **Lauren Hwang**

Associate

CA License No. 02200380

lauren.hwang@colliers.com

+1 925 279 4641

This document has been prepared by Colliers for advertising and general information only. Colliers makes no guarantees, representations or warranties of any kind, expressed or implied, regarding the information including, but not limited to, warranties of content, accuracy and reliability. Any interested party should undertake their own inquiries as to the accuracy of the information. Colliers excludes unequivocally all inferred or implied terms, conditions and warranties arising out of this document and excludes all liability for loss and damages arising there from. This publication is the copyrighted property of Colliers and /or its licensor(s). © 2025. All rights reserved. This communication is not intended to cause or induce breach of an existing listing agreement.