



Exclusively listed by:

William Low, Jr.
President
413.237.9692
bill@lowpicard.com



OFFICE PROPERTY FOR LEASE

MEADOWS EXECUTIVE CENTER

200 North Main Street East Longmeadow, MA 01028

L&P Commercial

200 North Main Street, Suite 3
413.595.8008 | lowpicard.com

MEADOWS EXECUTIVE CENTER

200 North Main Street East Longmeadow, MA 01028



OFFERING SUMMARY

Lease Rate:	\$550.00-\$700 per month Gross
Building Size:	2,641 SF
Available SF:	60-168 SF
Lot Size:	5.9 Acres
Number of Units:	13
Year Built:	1970
Renovated:	2020
Zoning:	Business A
Market:	Greater Springfield East

PROPERTY OVERVIEW

L&P Commercial is pleased to offer individual offices for lease at the Meadows Executive Center in East Longmeadow. The property offers a workspace that reflects your company's professionalism and sophistication. Individual office rentals starting at \$400 per month. The monthly rent (Executive Suites only) includes internet, all utilities, shared conference room, waiting room, and kitchenette.

Situated in the heart of the East Longmeadow commercial district, our executive office center provides unmatched accessibility to major business hubs, renowned restaurants, and upscale amenities.

PROPERTY HIGHLIGHTS

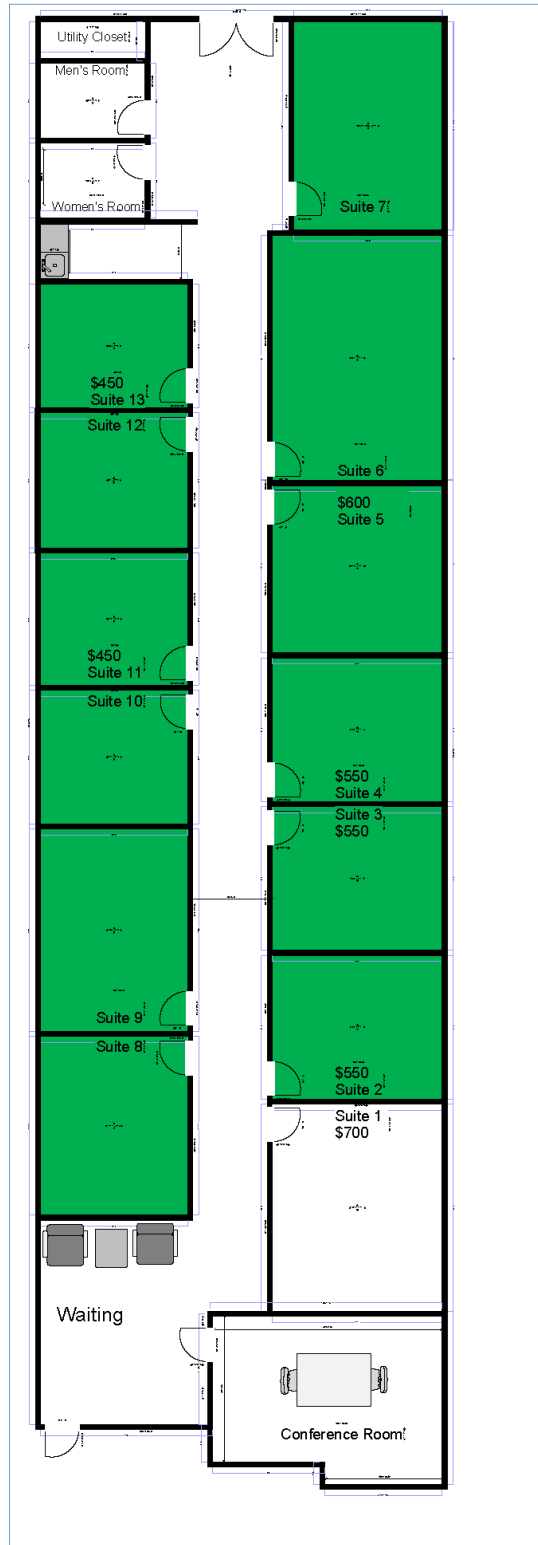
- Internet included in the rent
- Conference Room
- Kitchenette



William Low, Jr.
President
413.237.9692
bill@lowpicard.com

MEADOWS EXECUTIVE CENTER

200 North Main Street East Longmeadow, MA 01028



William Low, Jr.
President
413.237.9692
bill@lowpicard.com

MEADOWS EXECUTIVE CENTER

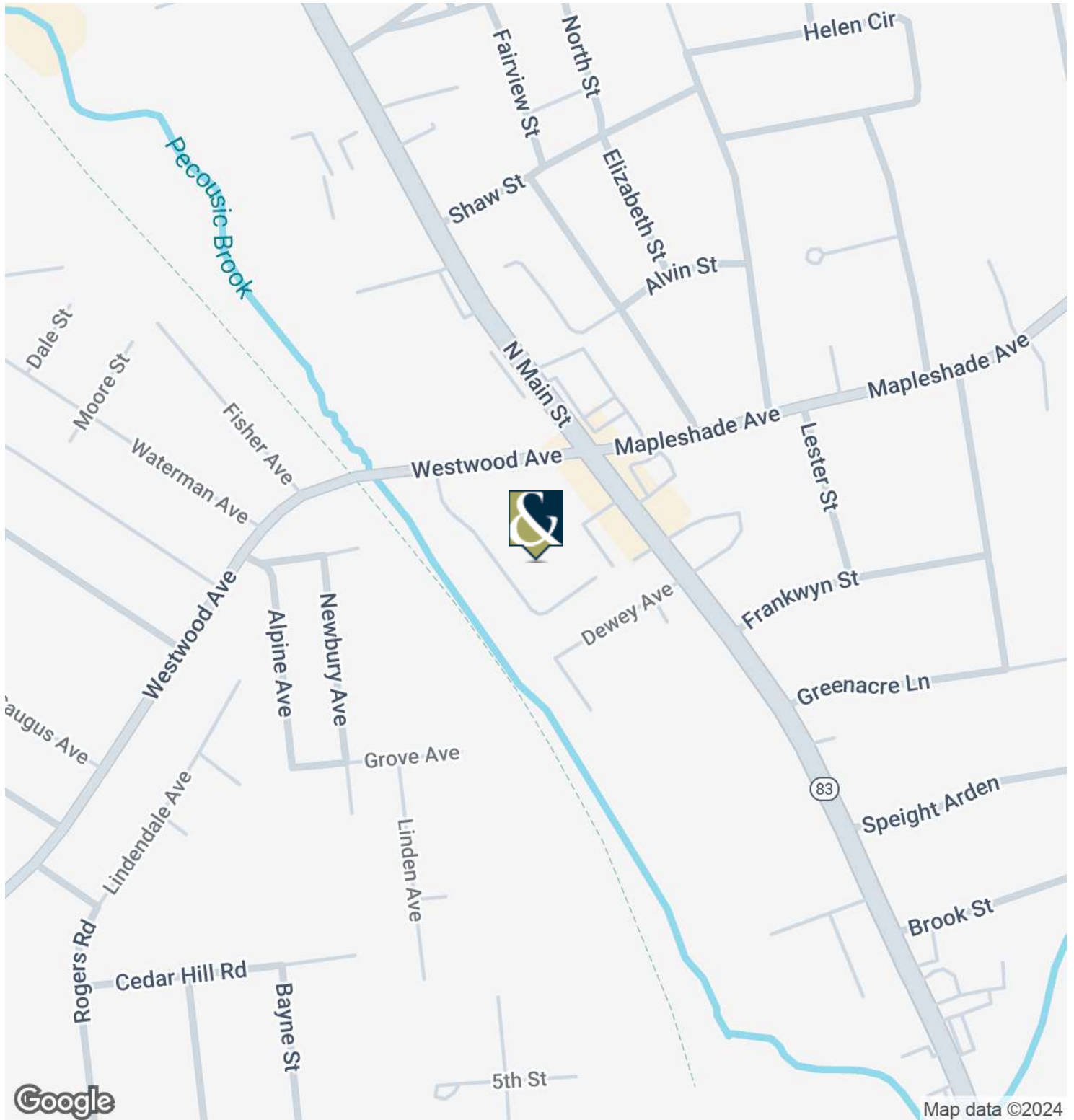
200 North Main Street East Longmeadow, MA 01028



William Low, Jr.
President
413.237.9692
bill@lowpicard.com

MEADOWS EXECUTIVE CENTER

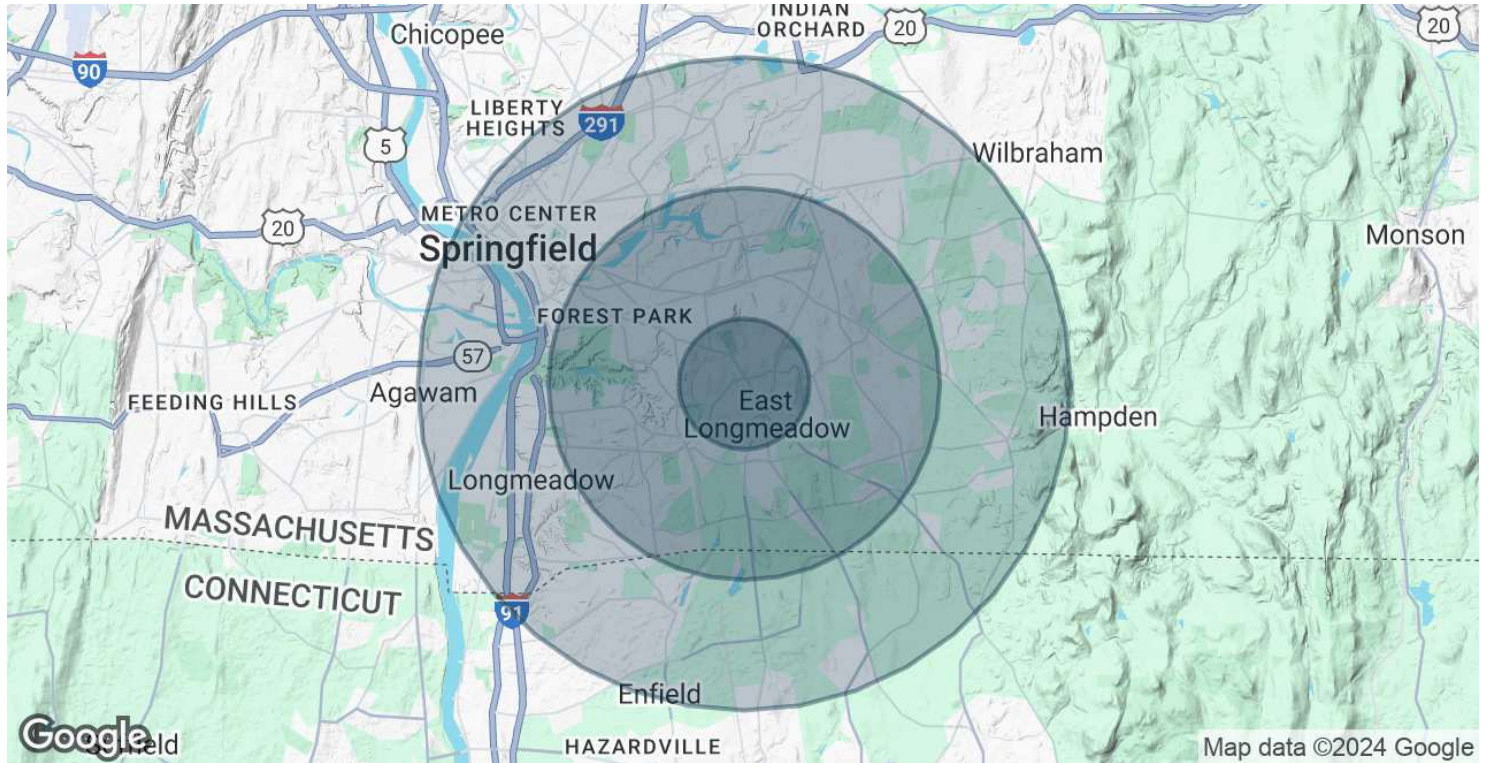
200 North Main Street East Longmeadow, MA 01028



William Low, Jr.
President
413.237.9692
bill@lowpicard.com

MEADOWS EXECUTIVE CENTER

200 North Main Street East Longmeadow, MA 01028



POPULATION	1 MILE	3 MILES	5 MILES
Total Population	6,831	69,062	194,583
Average age	45.5	38.6	35.0
Average age (Male)	42.7	37.4	33.6
Average age (Female)	47.7	40.5	36.3

HOUSEHOLDS & INCOME	1 MILE	3 MILES	5 MILES
Total households	2,632	25,772	68,151
# of persons per HH	2.6	2.7	2.9
Average HH income	\$79,540	\$76,162	\$65,667
Average house value	\$238,161	\$256,748	\$260,575

* Demographic data derived from 2020 ACS - US Census



William Low, Jr.
 President
 413.237.9692
 bill@lowpicard.com