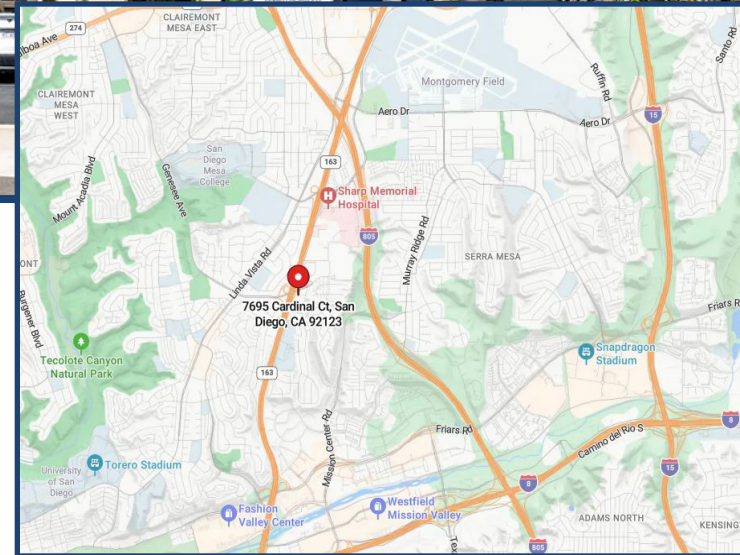


Medical Office Condo For Sale | \$1,028,870



7695 Cardinal Court, Suite 390

San Diego, CA 92123



PROPERTY HIGHLIGHTS

- Sale Price: \$1,028,870
- Size: ±1,518 SF
- New Premier Medical Space Facility
- Currently built out as a OBGYN office
- Well-located suite with restroom and lobby
- Near Sharp Memorial Hospital and Rady Children's
- After-hours patient access and parking
- Direct access to Highway 163 and Interstate 805
- Well established HOA in place: \$982/month
- Rate negotiable based on usage requirements
- Easy access to Interstate 8, 15, and Highway 163

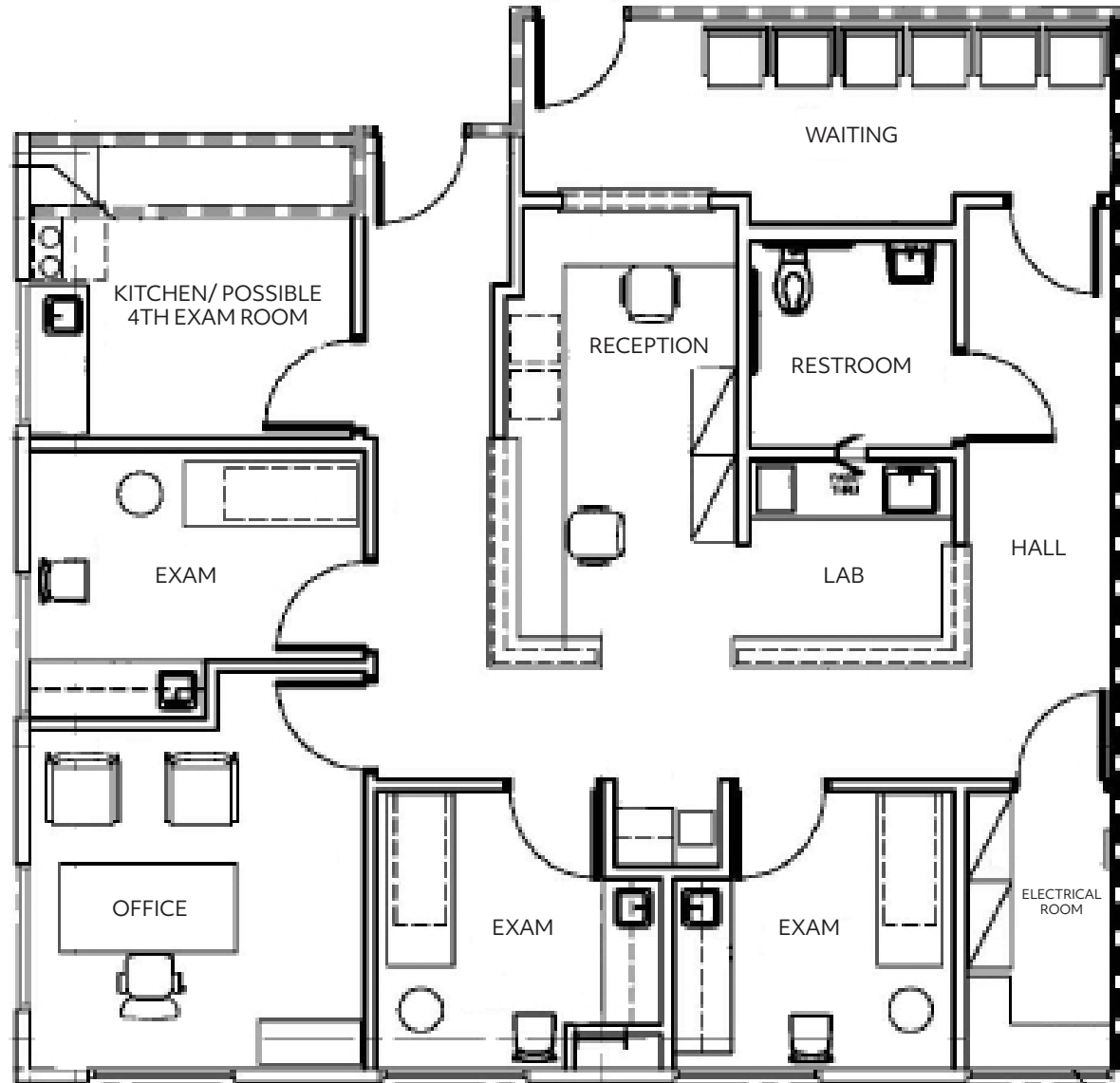




SUITE FEATURES

- Approximately 1,518 SF
- Reception & Waiting Area
- High Ceilings Throughout
- One Private Office
- Three Exam Rooms
- Kitchenette with Sink (Possible 4th Exam Room)
- Private Restroom
- Lab Area
- Nurses Station
- 2 Garage Parking Spaces

FLOOR PLAN



*Floor plan is not to scale. Buyer to verify all measurements as part of Due Diligence.

7695 Cardinal Court

San Diego, CA 92123

For more information

Josh Buchholz

d: 619 391 1889 | josh@dmjpartners.com

license # 01761228

Doug Ceresia, CCIM, SIOR

d: 619 391 1890 | doug@dmjpartners.com

license # 01314250

Matt Midura

d: 619 391 1891 | matt@dmjpartners.com

license # 01826378