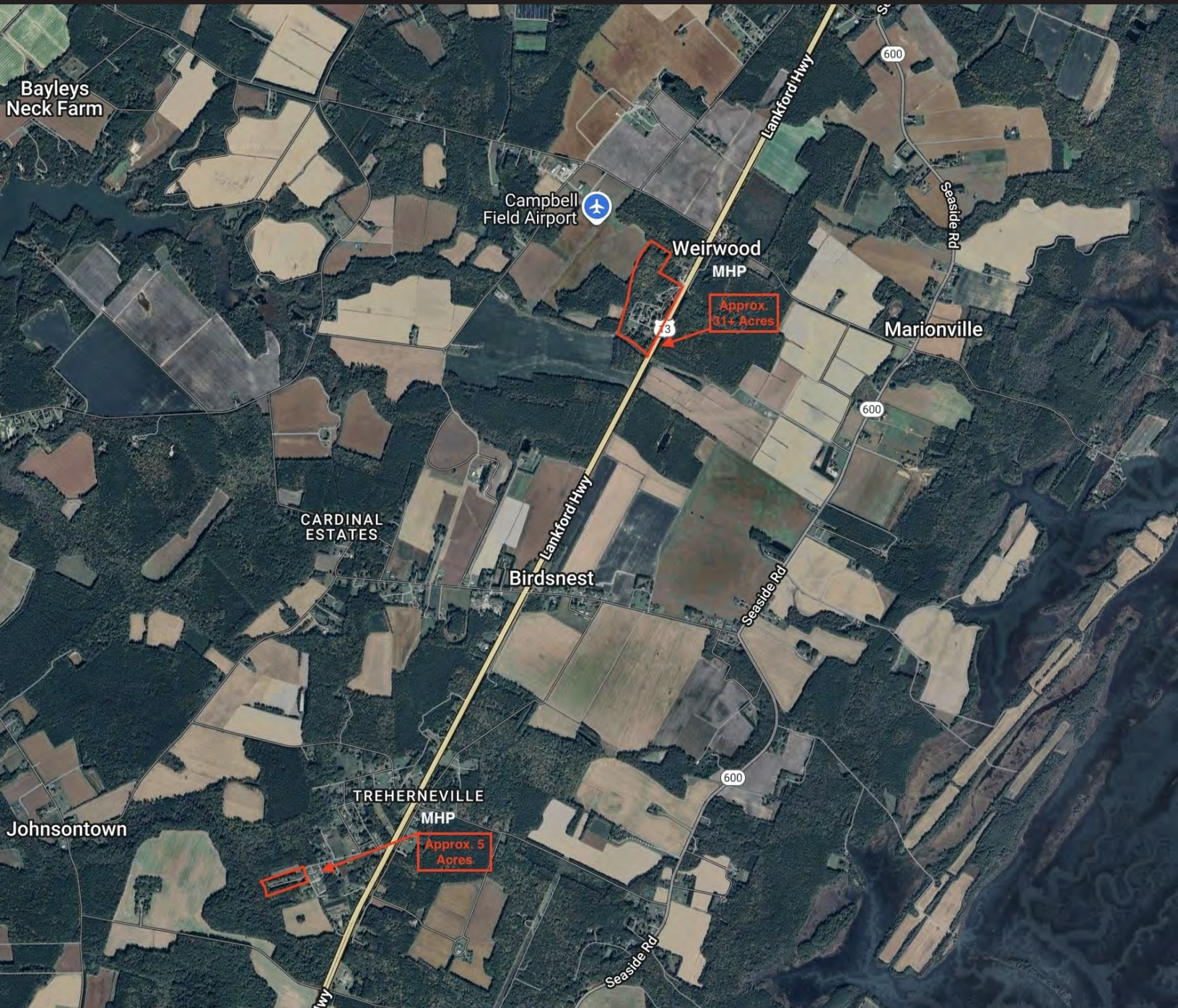


EXISTING MOBILE HOME PARKS FOR SALE

9142 LANKFORD HWY

NASSAWADDOX, VA 23413 - EASTERN SHORE



Brokerage with vision. Real estate with results.

Presented By:

Chris Arney
Associate Broker
757.472.2648
chris@katsias.com

Haven Spirelis
Vice President
757.748.8448
Haven@katsias.com

LAND FOR SALE

9142 LANKFORD HWY

NASSAWADDOX, VA 23413

EXECUTIVE SUMMARY



OFFERING SUMMARY

Sale Price: \$2,000,000
Weirwood MHP
(Shady Valley)

Sales Price: \$249,500
Trehernville MHP
(Hidden Valley)



PROPERTY HIGHLIGHTS

- Two existing operating mobile home parks with added storage units.
- Weirwood MHP contains approx. 31 acres, fronts Route 13 containing 38 sites and 40 separate self storage units.
- Trehernville MHP contains approx. 5 acres, is a short distance away, and is approved for 16+ sites (14 currently).
- Prime visibility on Route 13 (Lankford Hwy) Nassawadox, in Eastern Shore.
- Can be sold separately or together. Call for further information!

DEMOGRAPHICS	0.3 Miles	0.5 Miles	1 Mile
Total Households:	23	31	94
Total Population:	49	67	207
Average HH Income:	\$120,242	\$117,709	\$108,649



Presented By:
Chris Arney | Associate Broker **Haven Spirelis | Vice President**
757.472.2648 757.748.8448
chris@katsias.com Haven@katsias.com

3720 Virginia Beach Blvd suite 200, Virginia Beach, VA 23452 | 757.472.2648 | www.katsias.com

We have in preparing this information used our best endeavors to ensure that the information contained herein in true and accurate, but accept no responsibility and disclaim all liability in respect of any errors, inaccuracies or misstatements contained herein. Prospective purchasers and/or lessors should make their own inquiries to verify the information contained herein.

LAND FOR SALE

9142 LANKFORD HWY

NASSAWADDOX, VA 23413

WEIRWOOD MOBILE HOME PARK - FOR SALE: \$2,000,000



Presented By:

Chris Arney | Associate Broker
757.472.2648
chris@katsias.com

Haven Spirelis | Vice President
757.748.8448
Haven@katsias.com

3720 Virginia Beach Blvd suite 200, Virginia Beach, VA 23452 | 757.472.2648 | www.katsias.com

We have in preparing this information used our best endeavors to ensure that the information contained herein in true and accurate, but accept no responsibility and disclaim all liability in respect of any errors, inaccuracies or misstatements contained herein. Prospective purchasers and/or lessors should make their own inquiries to verify the information contained herein.

LAND FOR SALE

9142 LANKFORD HWY

NASSAWADDOX, VA 23413

SHORE TRAILER MOBILE HOME PARK



Presented By:

Chris Arney | Associate Broker
757.472.2648
chris@katsias.com

Haven Spirelis | Vice President
757.748.8448
Haven@katsias.com

3720 Virginia Beach Blvd suite 200, Virginia Beach, VA 23452 | 757.472.2648 | www.katsias.com

We have in preparing this information used our best endeavors to ensure that the information contained herein in true and accurate, but accept no responsibility and disclaim all liability in respect of any errors, inaccuracies or misstatements contained herein. Prospective purchasers and/or lessors should make their own inquiries to verify the information contained herein.

LAND FOR SALE

9142 LANKFORD HWY

NASSAWADDOX, VA 23413

AERIAL VIEW - WEIRWOOD MHP



Presented By:

Chris Arney | Associate Broker
757.472.2648
chris@katsias.com

Haven Spirelis | Vice President
757.748.8448
Haven@katsias.com

3720 Virginia Beach Blvd suite 200, Virginia Beach, VA 23452 | 757.472.2648 | www.katsias.com

We have in preparing this information used our best endeavors to ensure that the information contained herein in true and accurate, but accept no responsibility and disclaim all liability in respect of any errors, inaccuracies or misstatements contained herein. Prospective purchasers and/or lessors should make their own inquiries to verify the information contained herein.

LAND FOR SALE

HIDDEN VALLEY MOBILE HOME PARK

NASSAWADDOX, VA 23413

TREHERNVILLE MHP - FOR SALE: \$249,500



Brokerage with vision. Real estate with results.

Presented By:

Chris Arney | Associate Broker

757.472.2648

chris@katsias.com

Haven Spirelis | Vice President

757.748.8448

Haven@katsias.com

3720 Virginia Beach Blvd Suite 200, Virginia Beach, VA 23452 | 757.472.2648 | www.katsias.com

We have in preparing this information used our best endeavors to ensure that the information contained herein is true and accurate, but accept no responsibility and disclaim all liability in respect of any errors, inaccuracies or misstatements contained herein. Prospective purchasers and/or lessors should make their own inquiries to verify the information contained herein.

LAND FOR SALE

9142 LANKFORD HWY

NASSAWADDOX, VA 23413

TREHERNVILLE MHP



Brokerage with vision. Real estate with results.

Presented By:

Chris Arney | Associate Broker
757.472.2648
chris@katsias.com

Haven Spirelis | Vice President
757.748.8448
Haven@katsias.com

3720 Virginia Beach Blvd Suite 200, Virginia Beach, VA 23452 | 757.472.2648 | www.katsias.com

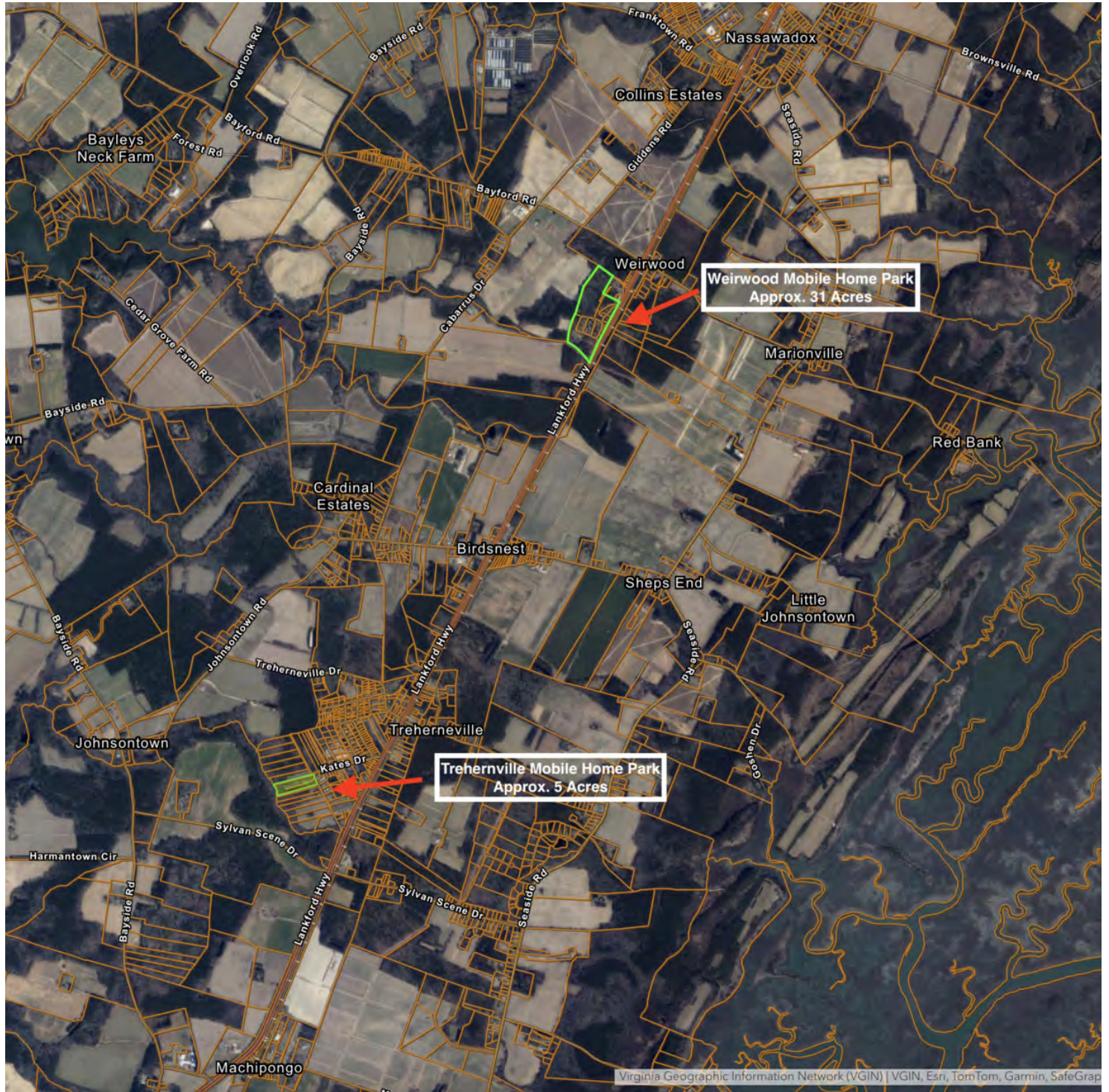
We have in preparing this information used our best endeavors to ensure that the information contained herein is true and accurate, but accept no responsibility and disclaim all liability in respect of any errors, inaccuracies or misstatements contained herein. Prospective purchasers and/or lessors should make their own inquiries to verify the information contained herein.

LAND FOR SALE

9142 LANKFORD HWY

NASSAWADDOX, VA 23413

LOCAL MAP



Brokerage with vision. Real estate with results.

Presented By:

Chris Arney | Associate Broker

757.472.2648

chris@katsias.com

Haven Spirelis | Vice President

757.748.8448

Haven@katsias.com

3720 Virginia Beach Blvd Suite 200, Virginia Beach, VA 23452 | 757.472.2648 | www.katsias.com

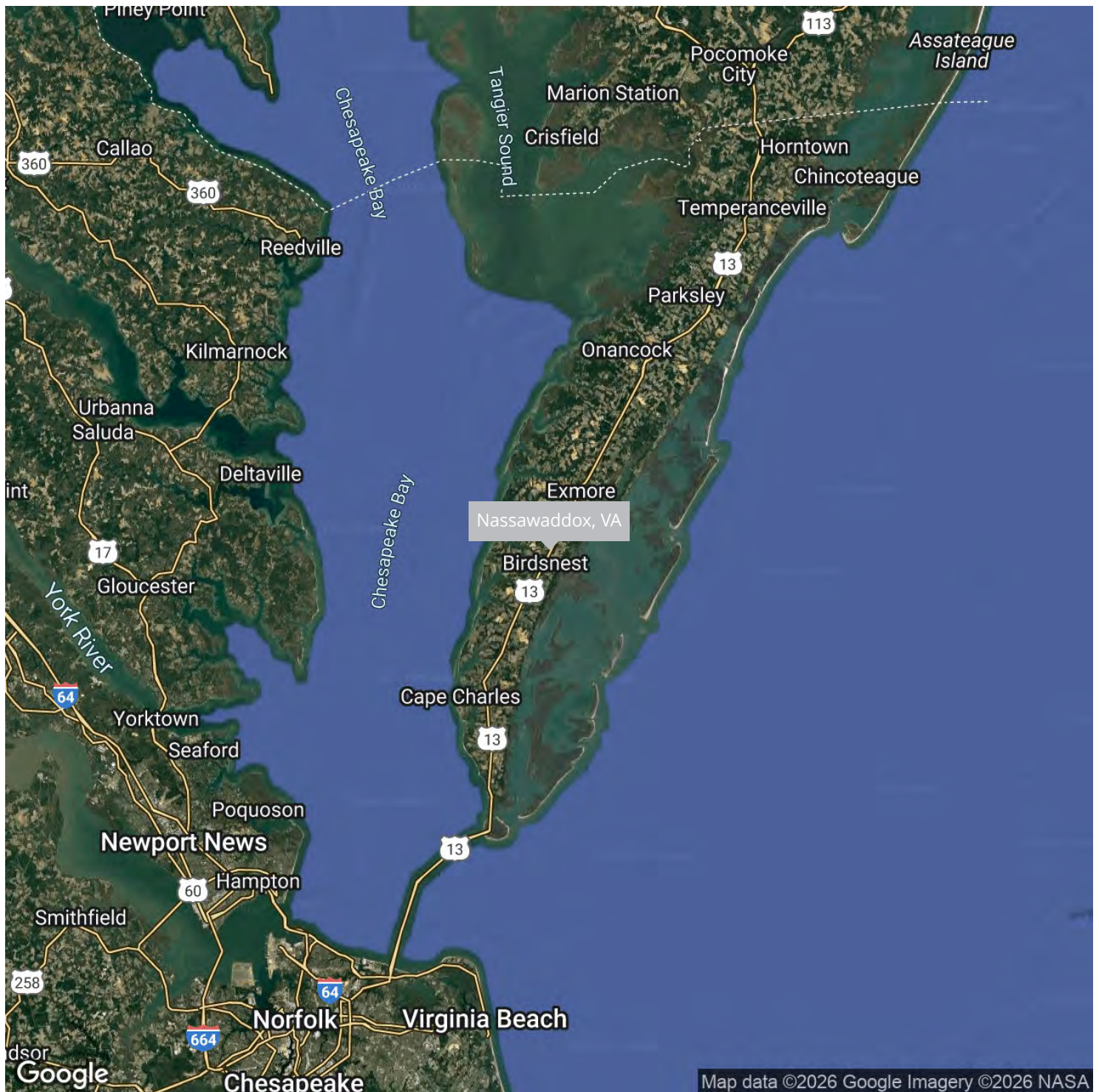
We have in preparing this information used our best endeavors to ensure that the information contained herein is true and accurate, but accept no responsibility and disclaim all liability in respect of any errors, inaccuracies or misstatements contained herein. Prospective purchasers and/or lessors should make their own inquiries to verify the information contained herein.

LAND FOR SALE

9142 LANKFORD HWY

NASSAWADDOX, VA 23413

REGIONAL MAP



Brokerage with vision. Real estate with results.

Presented By:

Chris Arney | Associate Broker

757.472.2648

chris@katsias.com

Haven Spirelis | Vice President

757.748.8448

Haven@katsias.com

3720 Virginia Beach Blvd suite 200, Virginia Beach, VA 23452 | 757.472.2648 | www.katsias.com

We have in preparing this information used our best endeavors to ensure that the information contained herein in true and accurate, but accept no responsibility and disclaim all liability in respect of any errors, inaccuracies or misstatements contained herein. Prospective purchasers and/or lessors should make their own inquiries to verify the information contained herein.