

40433-40665 KOPPERNICK ROAD
CANTON, MICHIGAN

HI-TECH FOR LEASE
2,489 - 5,028 Square Feet Available



**SIGNATURE
ASSOCIATES**
KNOW SIGNATURE | KNOW RESULTS

KOPPERNICK TECH CENTER



PROPERTY FEATURES

- 2,489 - 5,028 square feet available
 - Unit 40483: 2,489 sf
 - Unit 40443: 2,539 sf
- First-class flex space available
- All new build-outs
- Best economic leasing packages available in all of Metro Detroit
- Lease Rate: \$11.25/sf G + U



For more information, please contact:

DAVE GREEN
(248) 948 4184
dgreen@signatureassociates.com

SIGNATURE ASSOCIATES
One Towne Square, Suite 1200
Southfield, MI 48076
www.signatureassociates.com

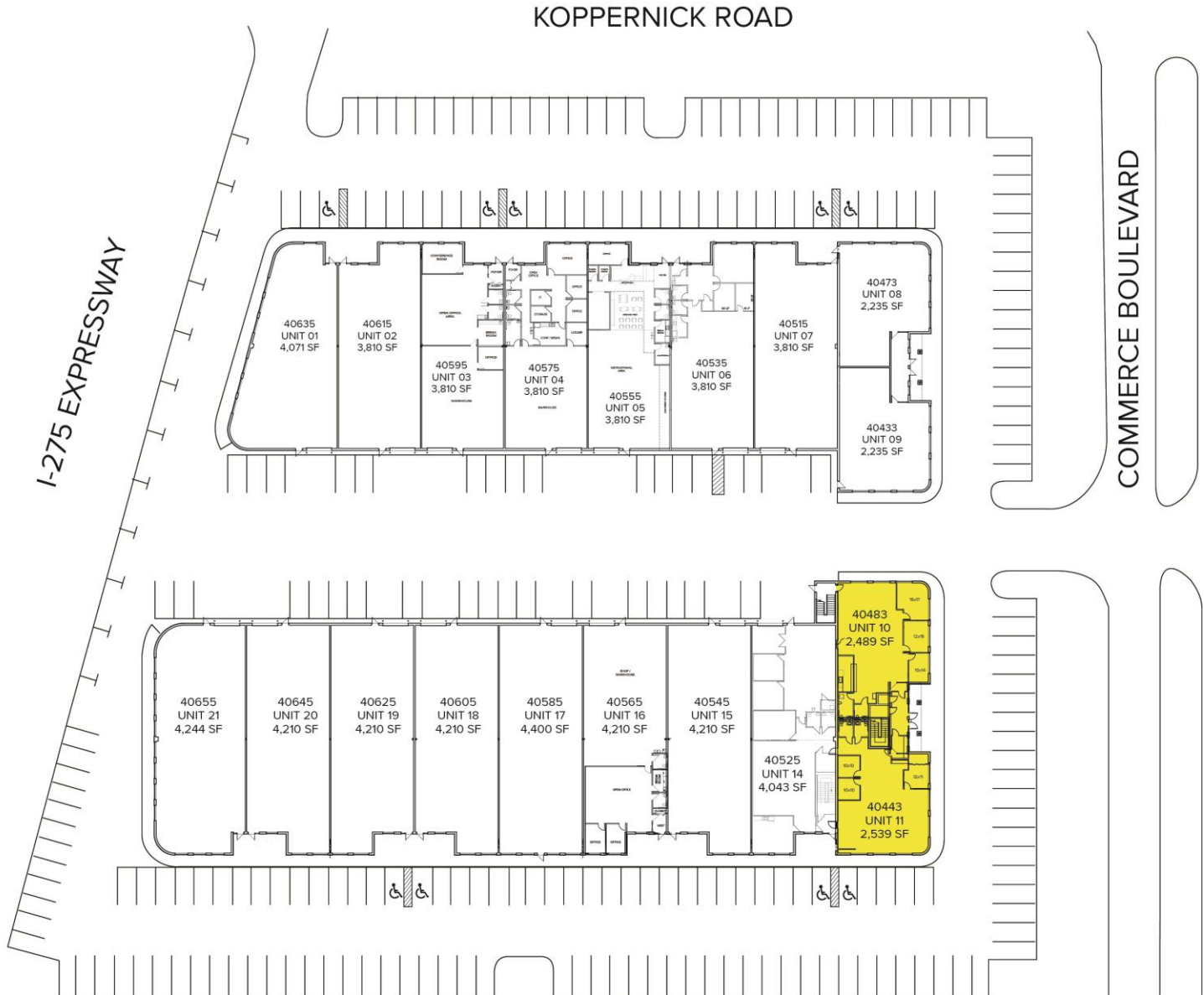
40433-40665 Koppernick Road – Canton, Michigan

Hi-Tech For Lease

2,489 - 5,028
Square Feet
AVAILABLE

AVAILABILITY

UNIT	TOTAL SF	OFFICE SF	RATE
40483*	2,489	2,489	\$11.25 G + U
40443*	2,539	2,539	\$11.25 G + U
*5,028 sf Contiguous			



For more information, please contact:

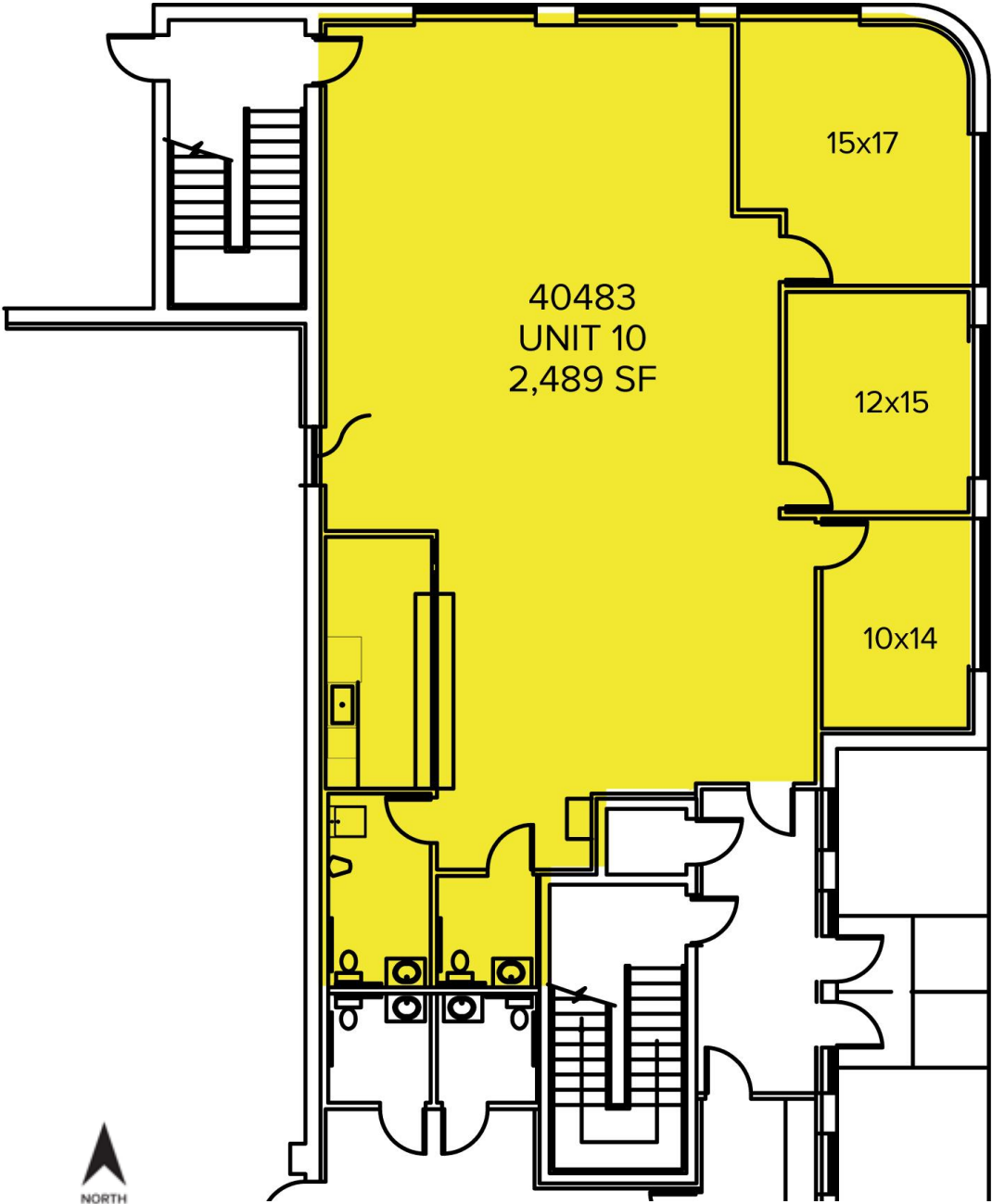
DAVE GREEN
(248) 948 4184
dgreen@signatureassociates.com

SIGNATURE ASSOCIATES
One Towne Square, Suite 1200
Southfield, MI 48076
www.signatureassociates.com

40433-40665 Koppernick Road – Canton, Michigan
Hi-Tech For Lease

2,489 - 5,028
Square Feet
AVAILABLE

Floor Plan – South Building
2,489 SF – \$11.25/sf G + U



For more information, please contact:

DAVE GREEN
(248) 948 4184
dgreen@signatureassociates.com

SIGNATURE ASSOCIATES
One Towne Square, Suite 1200
Southfield, MI 48076
www.signatureassociates.com

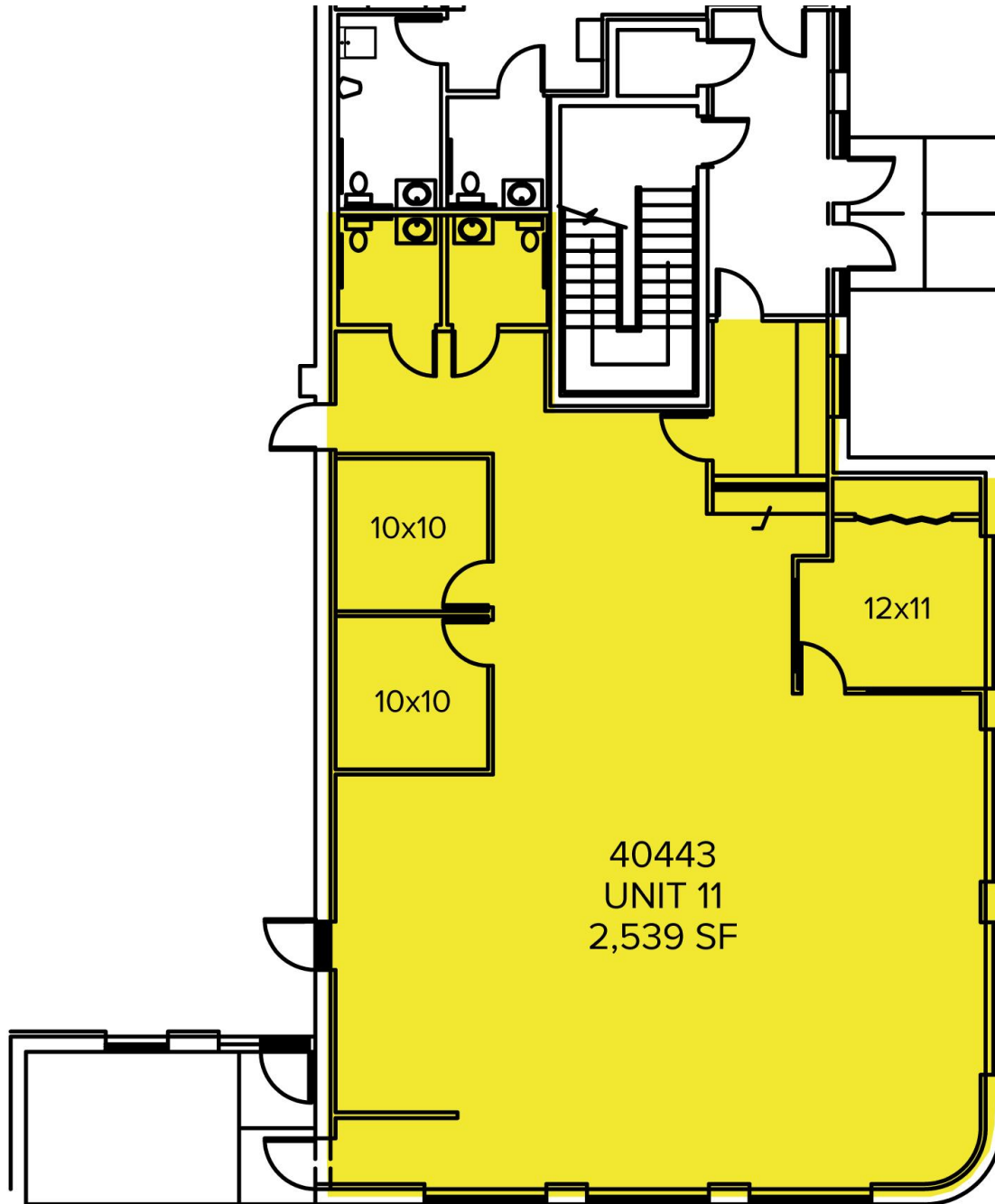
Information is subject to verification and no liability for errors or omissions is assumed. Price is subject to change and listing withdrawal.

40433-40665 Koppernick Road – Canton, Michigan

Hi-Tech For Lease

2,489 - 5,028
Square Feet
AVAILABLE

Floor Plan – South Building
2,589 SF - \$11.25 G + U



For more information, please contact:

DAVE GREEN
(248) 948 4184
dgreen@signatureassociates.com

SIGNATURE ASSOCIATES
One Towne Square, Suite 1200
Southfield, MI 48076
www.signatureassociates.com