



Properties for Lease

1 4052-4058 Del Rey Ave, Marina Del Rey, CA 90292



Property Details

Rental Rate Mo	\$3.70 /SF/MO
Property Type	Office
Rentable Building Area	25,100 SF
Building Class	B
Year Built	1989
Status	Active
LoopNet ID	20758040

Broker Information

 THE ALTEMUS COMPANY Commercial Real Estate Since 1946	Justin Altemus (310) 478-7729
---	----------------------------------

Property Notes

Listing's Link: <https://www.loopnet.com/listing/20758040>

Spaces

#	Space Avail.	Rental Rate	Max Contig.	Lease Type	Date Avail.	Description	Service Type
1st Floor, Ste 102	2,235 SF	\$3.70 /SF/MO		New	January 01, 2025	Layout - 4 private offices, 1 conference room/large office, open area, kitchen and 2 restrooms. No load factor.	Modified Gross
1st Floor, Ste 203/204	2,195 SF	\$3.70 /SF/MO		New	January 01, 2025	Layout - 3 private offices and open bullpen area. No load factor.	Modified Gross

Property Description

Magnificent loft style, multi-tenant creative office building located in the heart of the Marina Del Rey. Perfect for a variety of media, entertainment, production, technology and other creative office users. Shared, outdoor shaded patio area. The property is close to many restaurants and retail amenities. Low rise, built out office space which makes it great for social distancing. Project contains great parking at 3/1,000 (\$75/car/month) all grade level and single striped spaces. No load factor. Monthly NNN charges equal to approximately .70/sf.

Highlights

MAGNIFICENT LOFT STYLE CREATIVE OFFICE BUILDING

PERFECT FOR A VARIETY OF CREATIVE OFFICE USES

GREAT MARINA DEL REY LOCATION

CLOSE TO MANY RESTAURANTS AND RETAIL AMENITIES

GREAT PARKING AT NEARLY 3/1,000

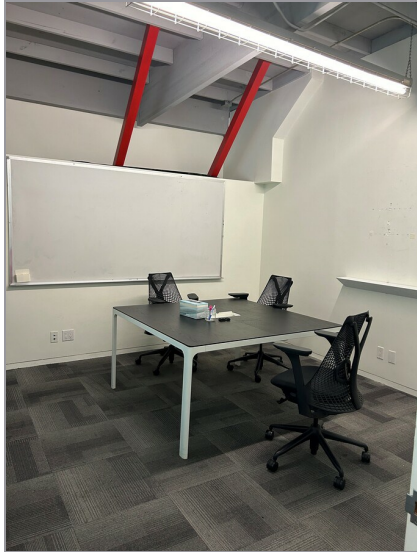
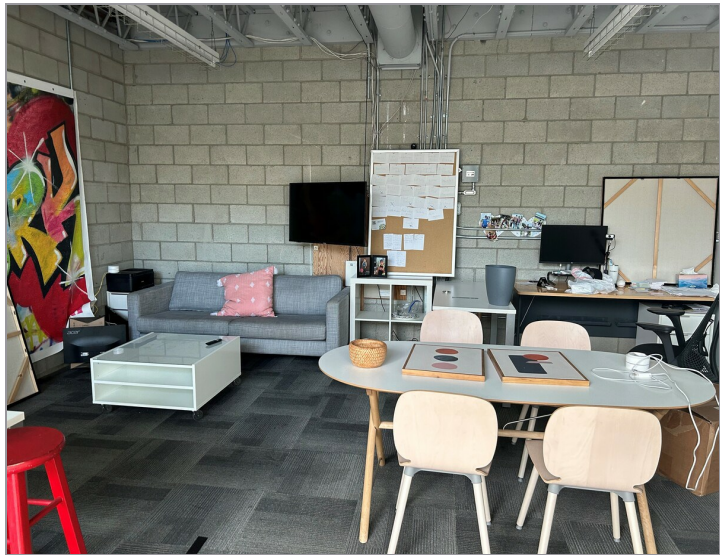
NO LOAD FACTOR

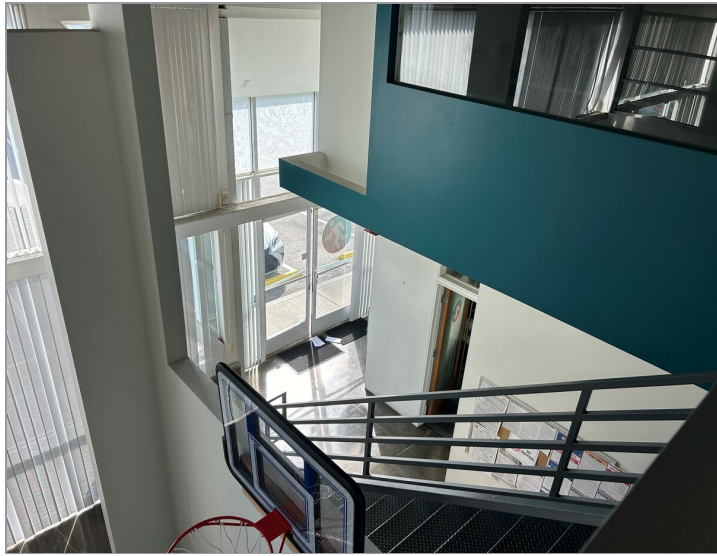
Photos

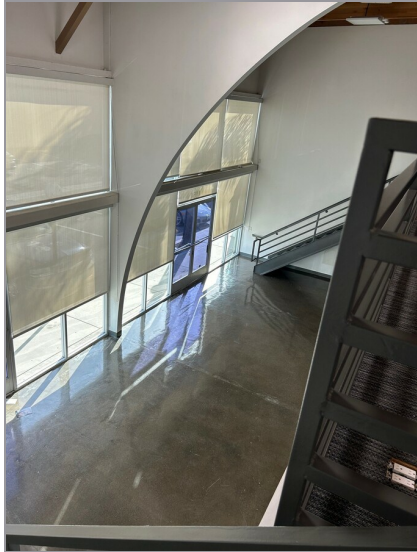






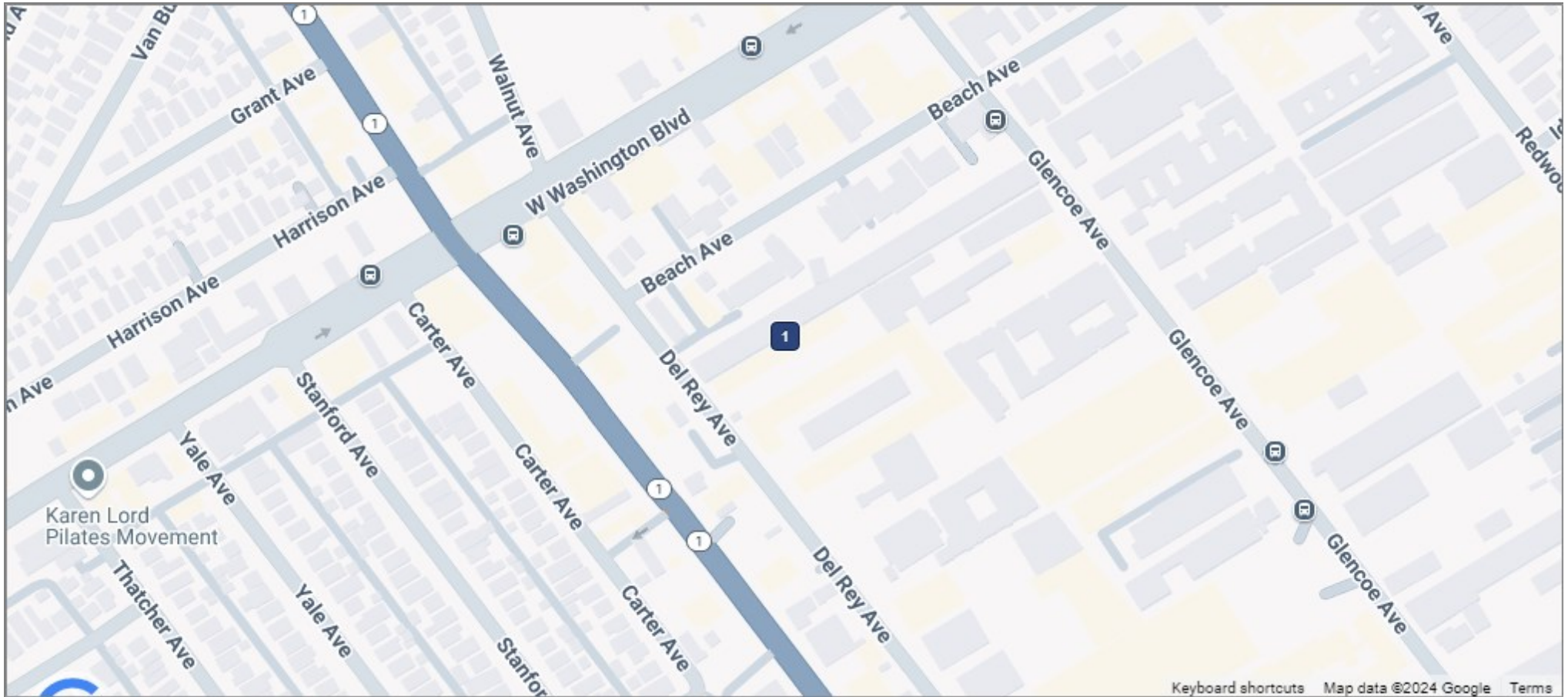








Map



1 4052-4058 Del Rey Ave
Marina Del Rey, CA 90292