

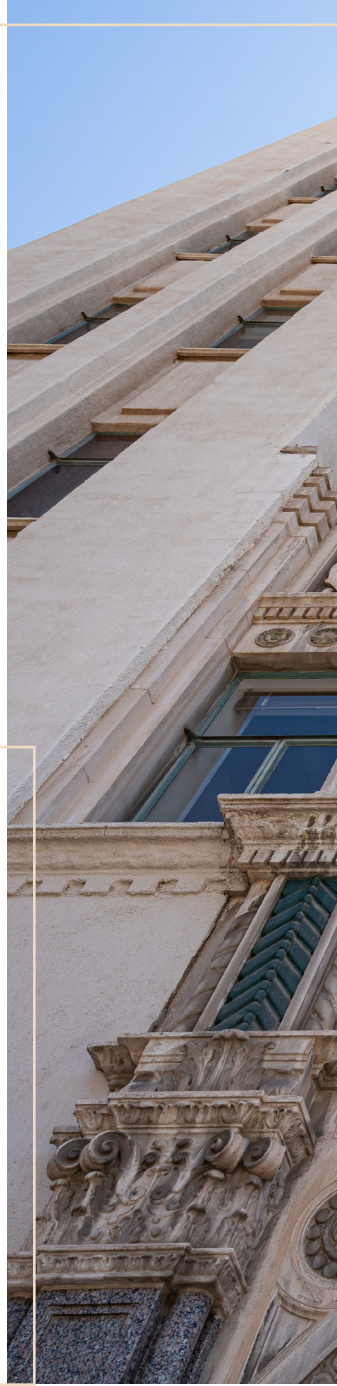


LUHRS

TOWER

45 W Jefferson St
Phoenix, AZ 85003

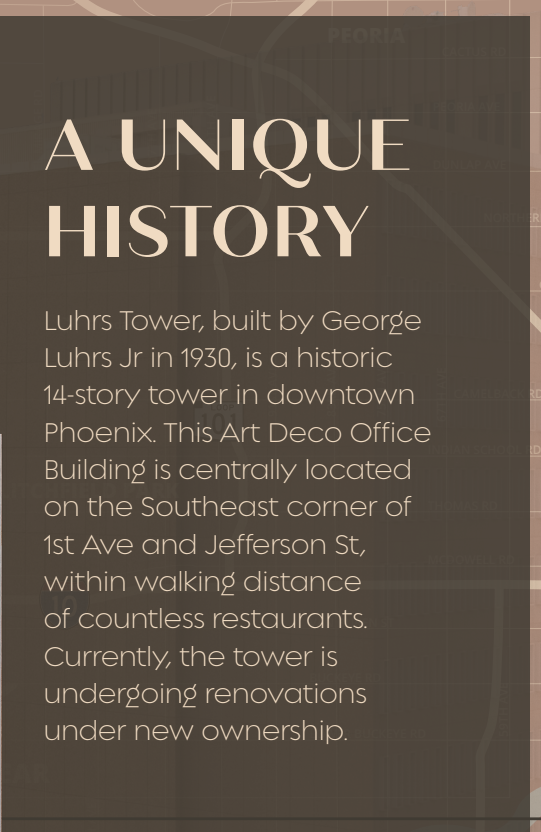
A TIMELESS
MASTERPIECE IN
DOWNTOWN
PHOENIX





A UNIQUE HISTORY

Luhrs Tower, built by George Luhrs Jr in 1930, is a historic 14-story tower in downtown Phoenix. This Art Deco Office Building is centrally located on the Southeast corner of 1st Ave and Jefferson St, within walking distance of countless restaurants. Currently, the tower is undergoing renovations under new ownership.



PROPERTY HIGHLIGHTS



Updated lobby and improved common areas



Move in ready suites with building standard improvements



Light rail stop located adjacent to Luhrs Tower



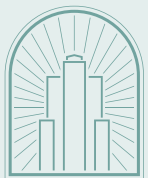
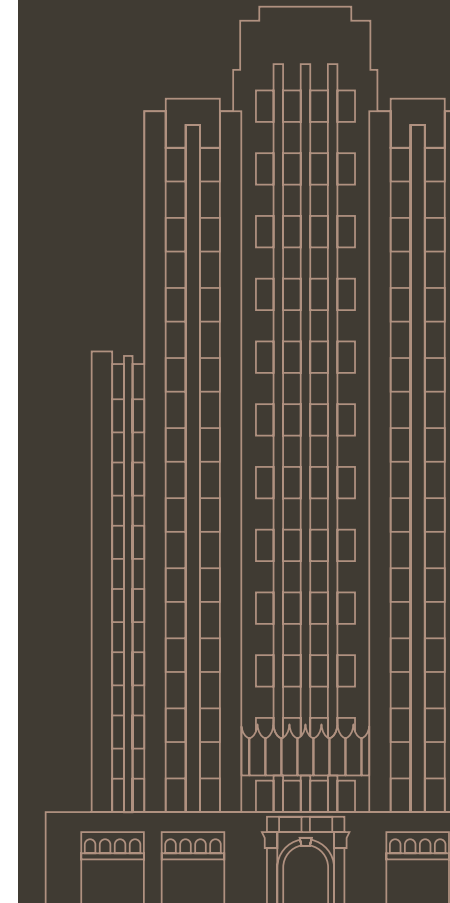
Covered parking conveniently located in the adjacent parking structure



Full floor suites ranging from 857 SF – 3,622 SF with private elevator landing



NEARBY AMENITIES



LUHRS
TOWER

Phil Breidenbach, SIOR
+1 602 222 5073
phil.breidenbach@colliers.com

Juliet Rozo
+1 602 222 5079
julietrozo@colliers.com



2390 E. Camelback Rd., Ste. 100
Phoenix, AZ 85016
+1 602 222 5000
colliers.com/arizona

This document has been prepared by Colliers for advertising and general information only. Colliers makes no guarantees, representations or warranties of any kind, expressed or implied, regarding the information including, but not limited to, warranties of content, accuracy and reliability. Any interested party should undertake their own inquiries as to the accuracy of the information. Colliers excludes unequivocally all inferred or implied terms, conditions and warranties arising out of this document and excludes all liability for loss and damages arising there from. This publication is the copyrighted property of Colliers and /or its licensor(s). © 2026. All rights reserved. This communication is not intended to cause or induce breach of an existing listing agreement. Colliers International AZ, LLC.