

MIXED USE OFFICE & WAREHOUSE

23,280 SF

FOR LEASE



321 & 333 N. Portland Ave., Oklahoma City, Oklahoma 73107



7501 Broadway Extension
Oklahoma City, OK 73116

Presented By:

George W. Huffman

CEO | Managing Broker

M: 405.409.4400

O: 405.752.2525

george@iwpok.com

OFFERING SUMMARY

Available SF: 23,280

Base Rate: \$12.00 / SF

Lease Type: NNN

Typical Term: 3-5 Years

Co-Brokerage: 3% Primary Term

EXECUTIVE SUMMARY

Two industrial properties in a prime Oklahoma City location offer flexible leasing options—lease individually or together for a combined 23,280 SF of space. Situated just off N. Portland Avenue, these properties provide excellent access to I-40, I-44, and Will Rogers World Airport.

333 N. Portland Avenue – 13,080 SF (Available Now)

- Office & Warehouse Combination
- 3,760 SF of Office Space featuring 12+ individual offices
- 9,320 SF of Open Warehouse Space
- Three Drive-In Overhead Doors: (2) 8' doors, (1) 12' wide x 14' tall door
- Front & Rear Parking + Signage on N. Portland

321 N. Portland Avenue – 10,200 SF (Available Now)

- Pure Warehouse Space – Ideal for storage, manufacturing, or distribution
- Easily Accessible & Adjacent to 333 N. Portland
- Seamless Expansion Opportunity for Businesses Needing Additional Space

These properties are perfect for a variety of uses, including distribution, manufacturing, logistics, light industrial, or service businesses needing both office and warehouse space with room to grow. Contact us today to discuss your space needs and schedule a tour!

Call: George Huffman @ 405-409-4400 | george@iwpok.com

**FOR LEASE**



SPACES	LEASE RATE	SPACE SIZE
Suite 321	\$12.00 SF/yr. (NNN)	10,200 SF
Suite 333	\$12.00 SF/yr. (NNN)	13,080 SF

FOR LEASE



333 N. Portland



333 N. Portland



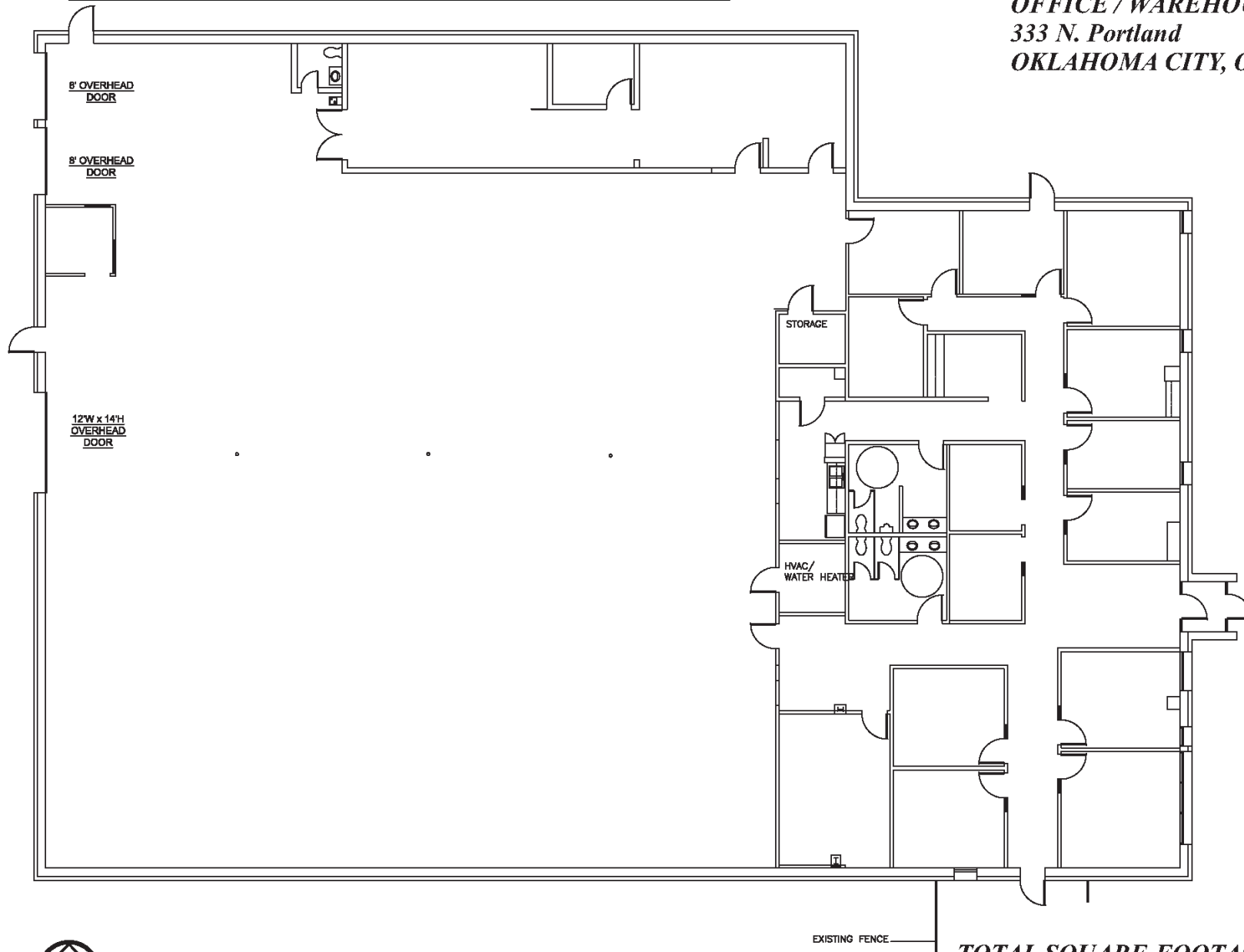
333 N. Portland



333 N. Portland

FOR LEASE

OFFICE / WAREHOUSE
333 N. Portland
OKLAHOMA CITY, OKLAHOMA

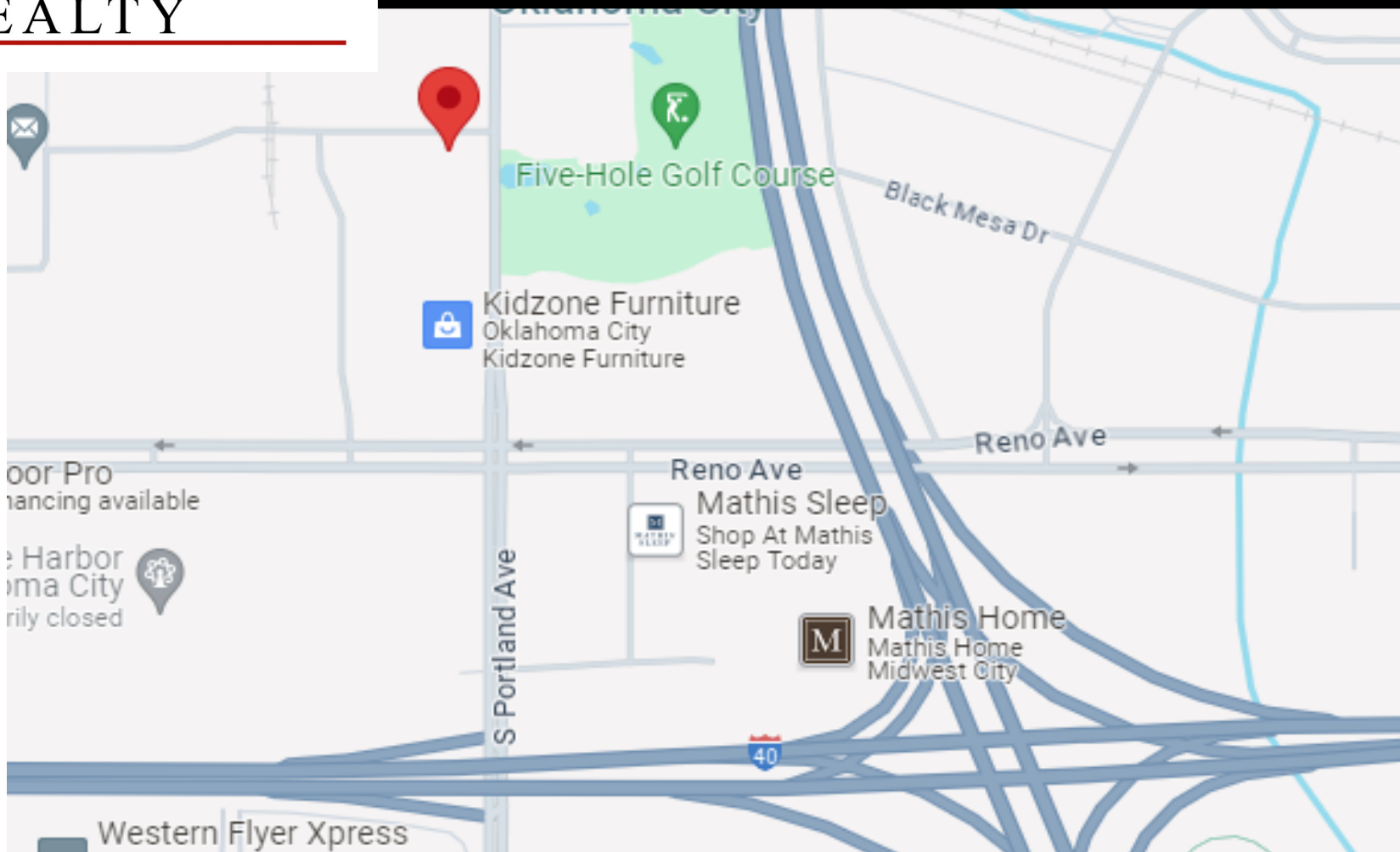


1/16"=1'-0"

MARCH 25, 2013

TOTAL SQUARE FOOTAGE:
Overall Office/Warehouse: 13,080 SF
Office Space Only: 3,760 SF

FOR LEASE



321 & 333 N. Portland Ave., Oklahoma City, Oklahoma



7501 Broadway Extension
Oklahoma City, OK 73116

Presented By:

George W. Huffman

CEO | Managing Broker

M: 405.409.4400

O: 405.752.2525

george@iwpok.com