



330-350 Grasmere Avenue
Fairfield, CT

KINGS CROSSING



WHOLE FOODS MARKET

PETCO

CVS

FIVE GUY'S BURGERS

CHIPOTLE

KINGS CROSSING

330-350 Grasmere
Avenue
Fairfield, CT

A Retail Hub



Kings Crossing is located in the Fairfield County retail submarket which has strong market fundamentals.

Location



Kings Crossing is located in the “Gold Coast” of Connecticut in the wealthy shore community of Fairfield Township. Fairfield is a sought-after community that is convenient to New York City (50 miles) and is known for its excellent school system, proximity to major highways, and high quality of life.

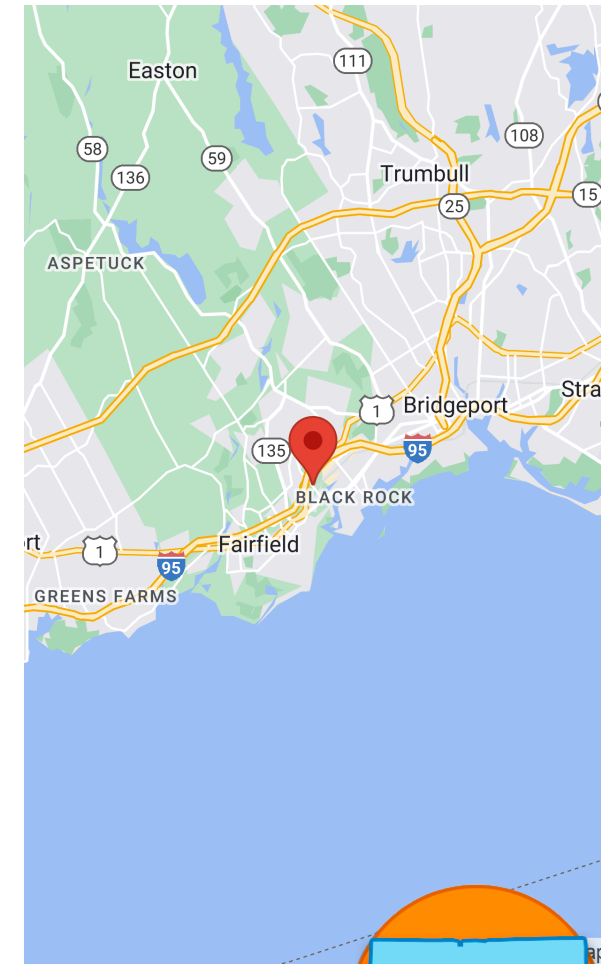
WHOLE FOODS MARKET

PETCO

CVS

FIVE GUY'S BURGERS

CHIPOTLE



KINGS CROSSING

330-350 Grasmere
Avenue
Fairfield, CT

WHOLE FOODS MARKET

PETCO

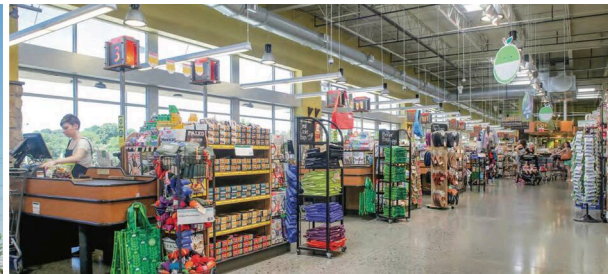
CVS

FIVE GUY'S BURGERS

CHIPOTLE

	10 minutes	15 minutes	20 minutes
POPULATION	99,133	254,014	443,747
DAYTIME POPULATION	40,498	95,517	179,879
AVERAGE INCOME	119,681	124,296	133,029

Site Reports USA 2022



KINGS CROSSING

330-350 Grasmere
Avenue
Fairfield, CT

WHOLE FOODS MARKET

PETCO

CVS

FIVE GUY'S BURGERS

CHIPOTLE

About Wilder



Wilder is a Boston-based real estate development, management, and leasing firm specializing in the positioning of retail properties. Privately held and owner managed, Wilder's mission has been and continues to be to create vibrant shopping places that meet and exceed the expectations of our customers, retailers, and investors.

From lifestyle centers, urban properties, and community centers to mixed-use developments and super-regional malls, Wilder, in its 40-year history, has developed, managed, and leased over 20 million square feet of retail properties throughout the United States and Puerto Rico.

The company continues to have a diverse portfolio of properties throughout the East Coast.

For More Information



Deb Di Meo,
ddimeo@wilderco.com
617-309-7231

