



142 MCLEOD ST, LIVERMORE, CA

Elevate Your Business with This Bright, Historic, and Flexible ±2,100 RSF Second-Floor Suite — Perfect for Office, Service, and Creative Uses in Downtown Livermore, CA

WILL BALLOWE
925.389.2499
will.ballowe@kidder.com
LIC N° 02053125



*Position Your Business for Success
with a Flexible $\pm 2,100$ RSF
Second-Floor Suite in Livermore, CA*

Building under new ownership after 50+ years

Locally owned and managed

$\pm 2,100$ RSF 2nd Floor suite available for lease

Ideal for office, service, and other uses

Incredible natural light from all four sides of the building

Built in 1882

Signage to First St available

Private entry to suite from interior and exterior staircase

Private restrooms in suite

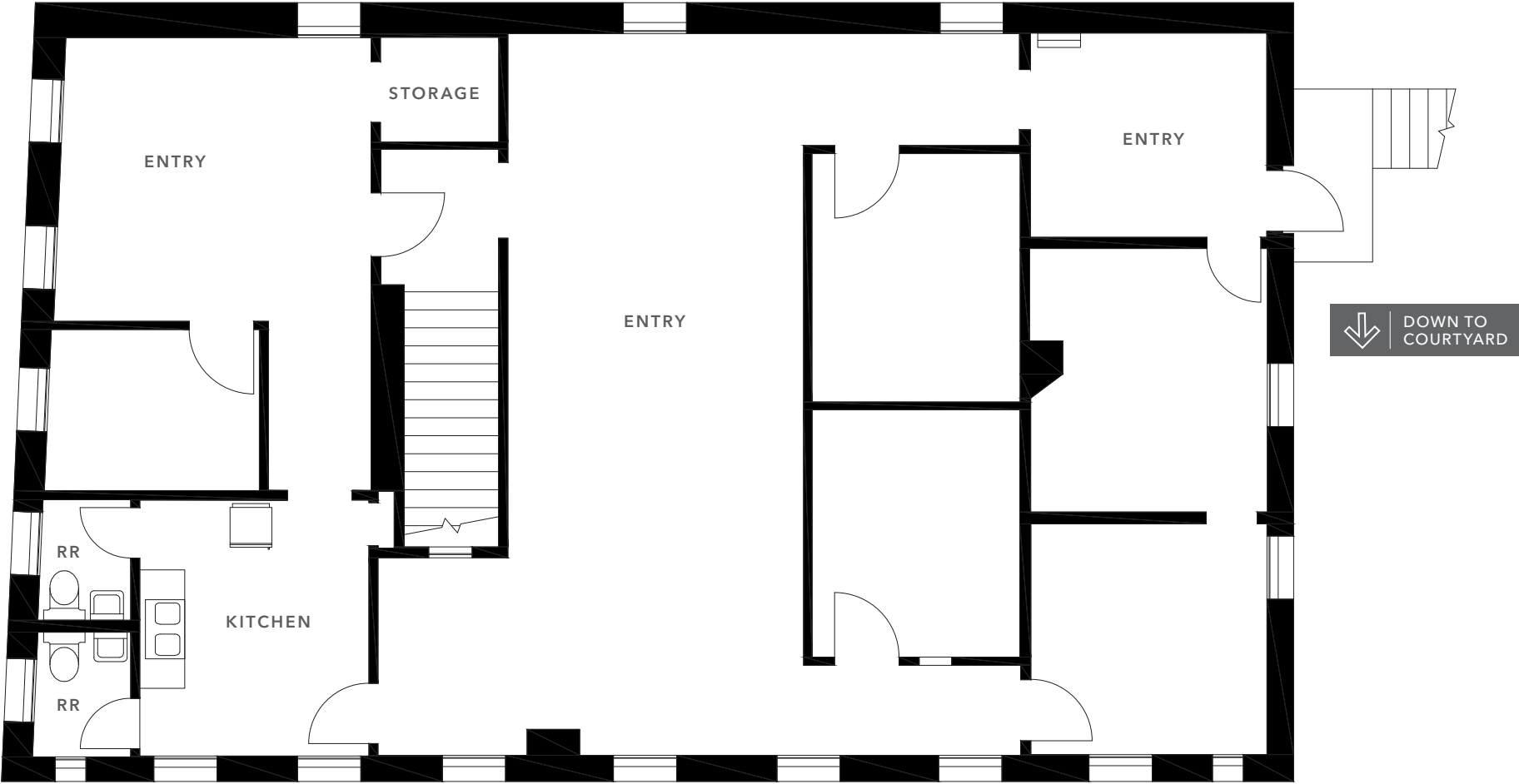
Walker's paradise (98)



FLOOR PLAN

Current/Existing

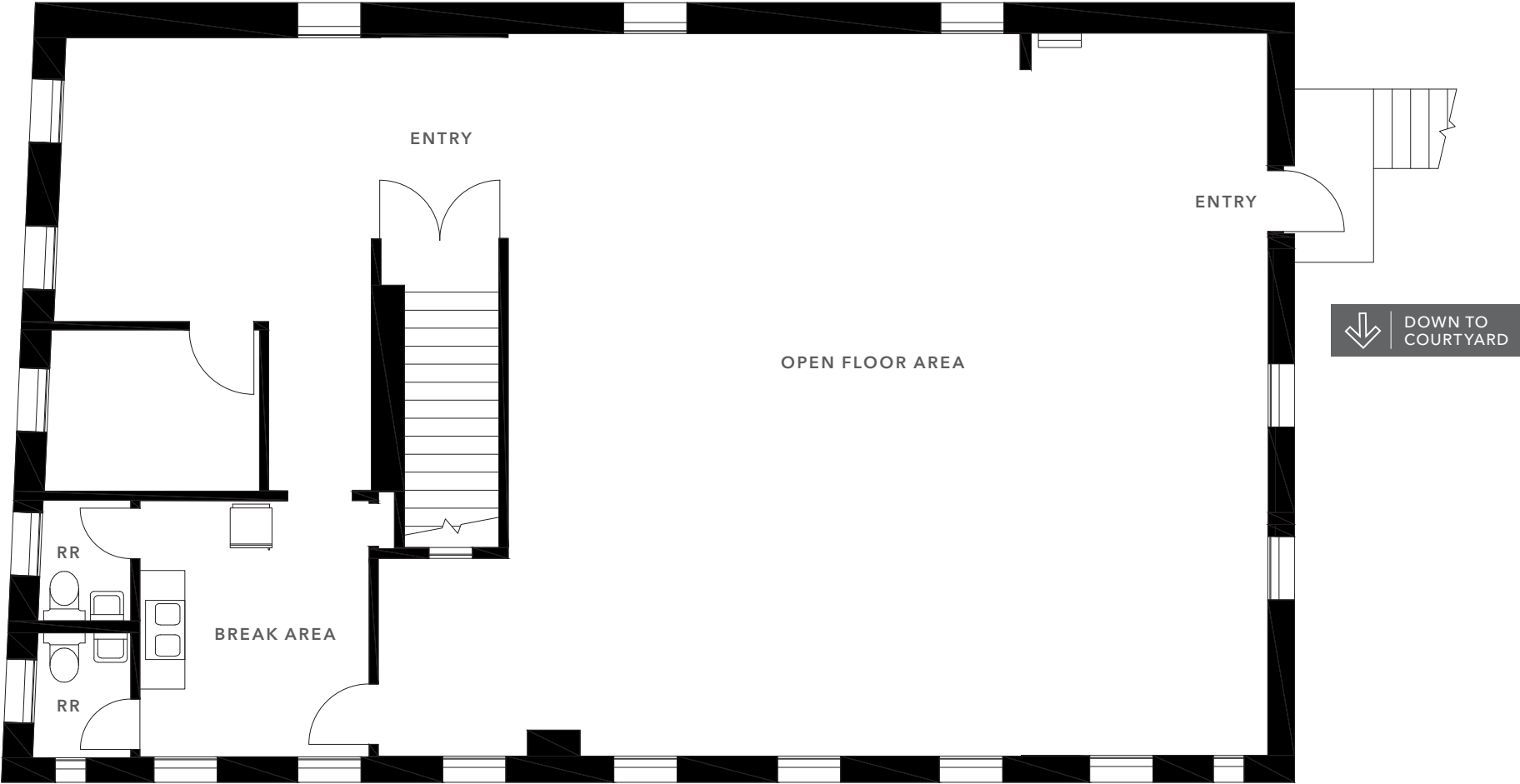
<p><i>±2,100 RSF</i></p> <p>AVAILABLE</p>	<p><i>CALL</i></p> <p>AGENT FOR LEASE RATE</p>	<p><i>NOW</i></p> <p>AVAILABLE</p>
---	--	------------------------------------



FLOOR PLAN NOT TO SCALE

FLOOR PLAN

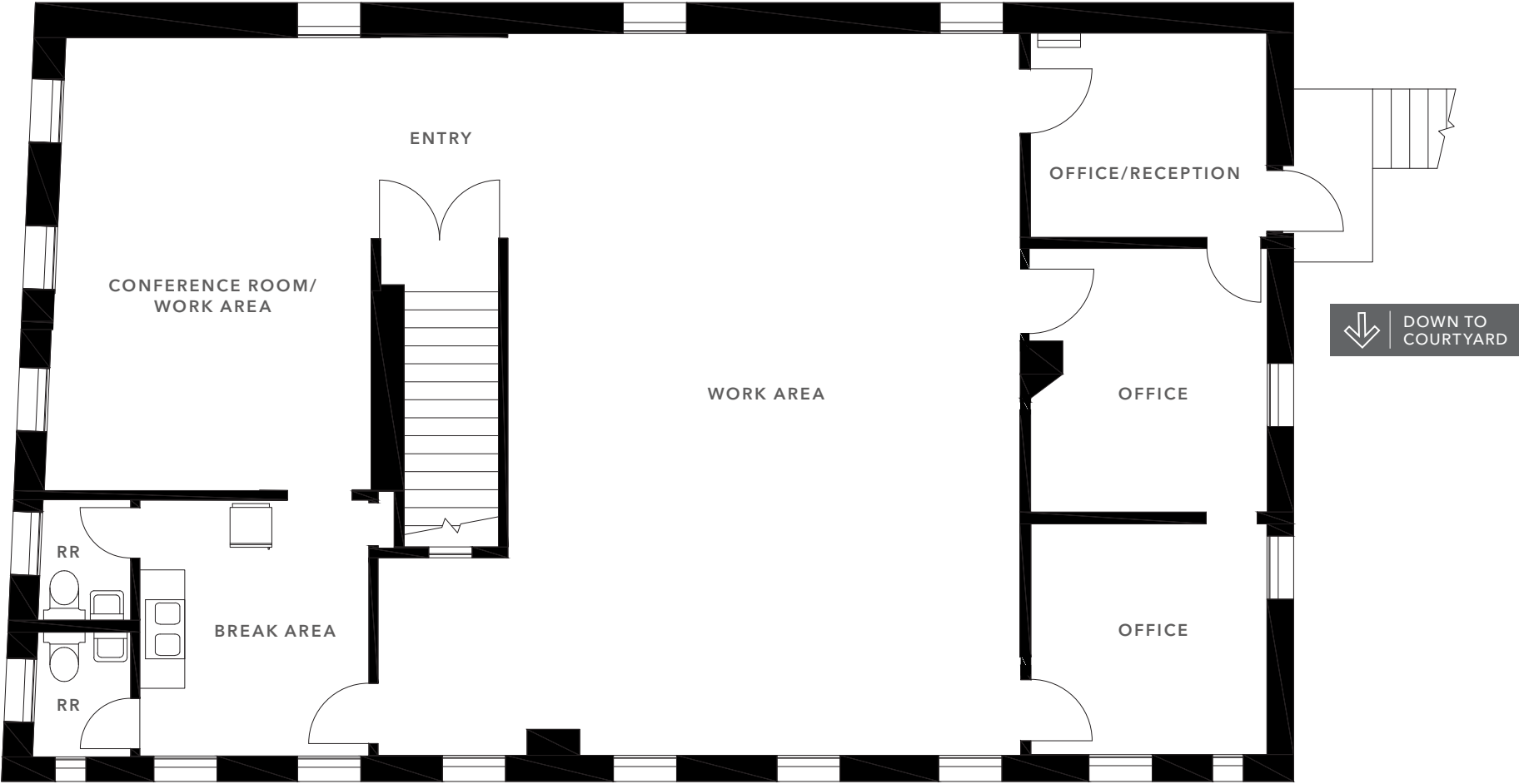
Hypothetical Option



FLOOR PLAN NOT TO SCALE

FLOOR PLAN

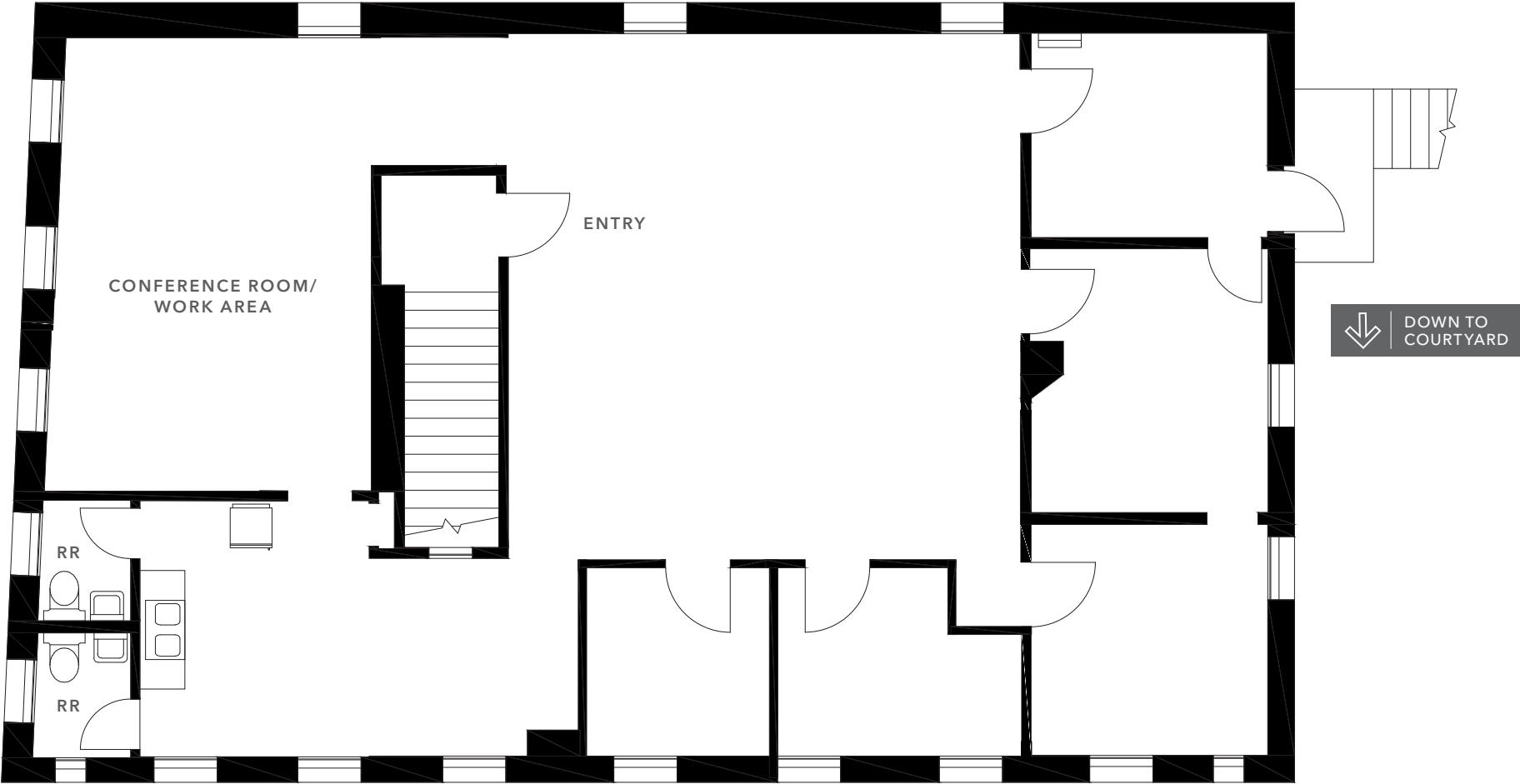
Hypothetical Option



FLOOR PLAN NOT TO SCALE

FLOOR PLAN

Hypothetical Option



FLOOR PLAN NOT TO SCALE



142 MCLEOD ST, SUITE A

*For more information on
this property, please contact*

WILL BALLOWE
925.389.2499
will.ballowe@kidder.com
LIC N° 02053125

KIDDER.COM

This information supplied herein is from sources we deem reliable. It is provided without any representation, warranty, or guarantee, expressed or implied as to its accuracy. Prospective Buyer or Tenant should conduct an independent investigation and verification of all matters deemed to be material, including, but not limited to, statements of income and expenses. Consult your attorney, accountant, or other professional advisor. All Kidder Mathews designs are the sole property of Kidder Mathews. Branded materials and layouts are not authorized for use by any other firm or person.

