

# Downtown Portland Office Space

30 Danforth St. | Portland, ME 04101



## — Property Highlights —

- Downtown office suites ranging from 2,350± - 8,569± SF
- Parking available in adjacent landlord owned lots
- Professionally managed property
- Fitness facility available to all tenants
- Centrally located in Portland's Old Port
- Pricing: \$17.50/SF - \$18.50/SF Modified Gross

## Landlord

J.B. Brown & Sons

## Available Spaces

Suite 207: 3,154± SF

Suite 209: 2,744± SF\*

Suite 210: 2,750± SF\*

~~Suite 214: 1,827± SF~~

Suite 305: 2,350± SF \*\*

Suite 306: 3,787± SF \*\*

Suite 307: 2,432± SF\*\*

*\*can be combined for a total of 5,494± SF*

*\*\*can be combined for a total of 8,569± SF*

## Lease Rate

\$17.50/sf - \$18.50/sf MG - electric & gas separate

## Utilities

Public Water and sewer, electricity, natural gas, telephone and cable

## Electric & Gas

Separately metered

## Lighting

Commercial grade fixtures

## Flooring

Vinyl tile, wood, and carpet

## Heating

Central, natural gas fired HVAC

## Elevator

Access to all floors

## Restrooms

Common restrooms

## Zoning

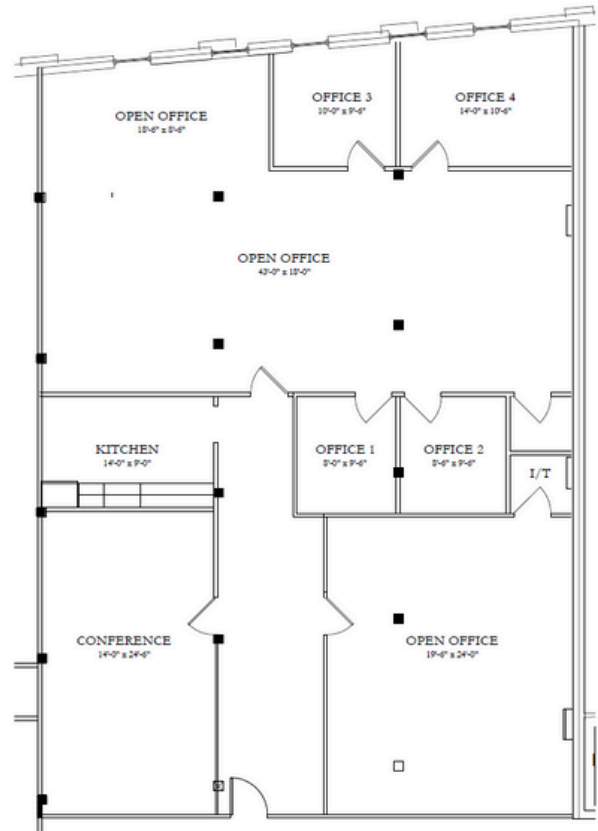
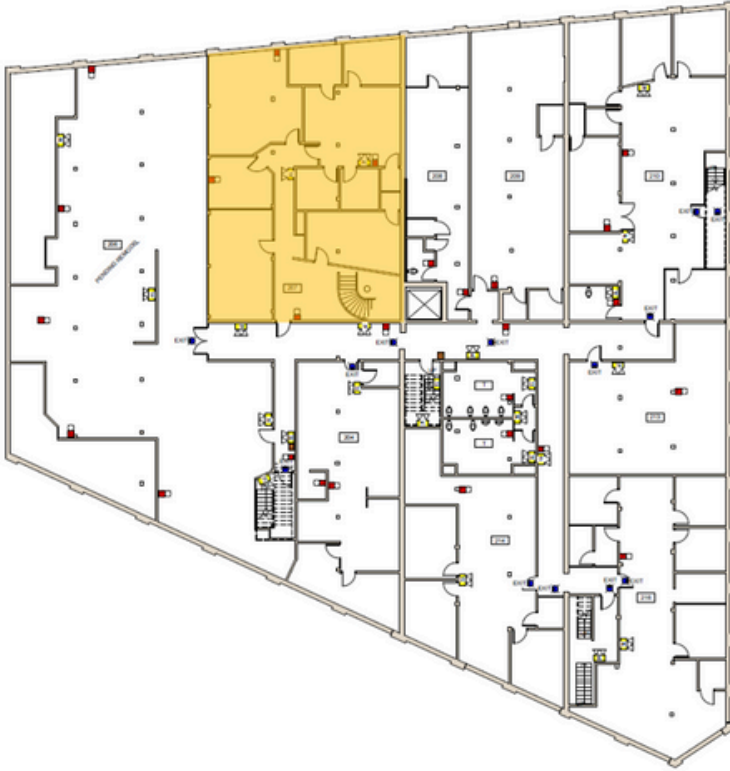
B3 - Downtown Business

## Parking

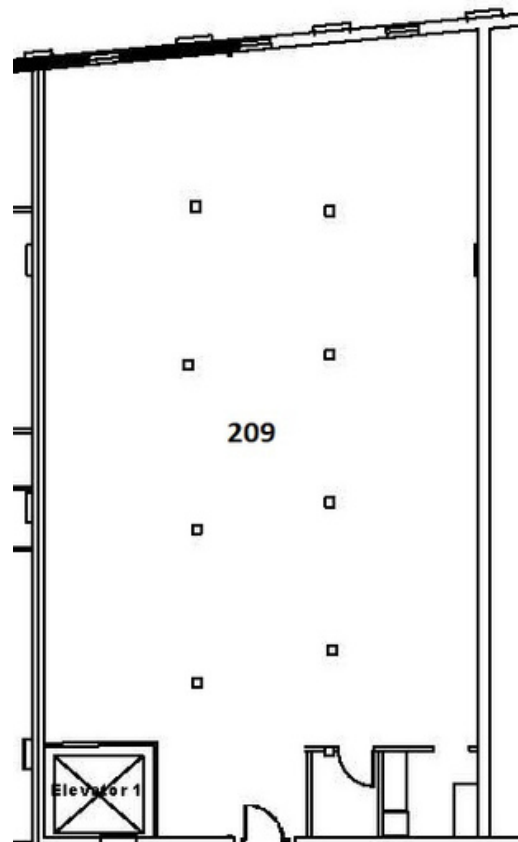
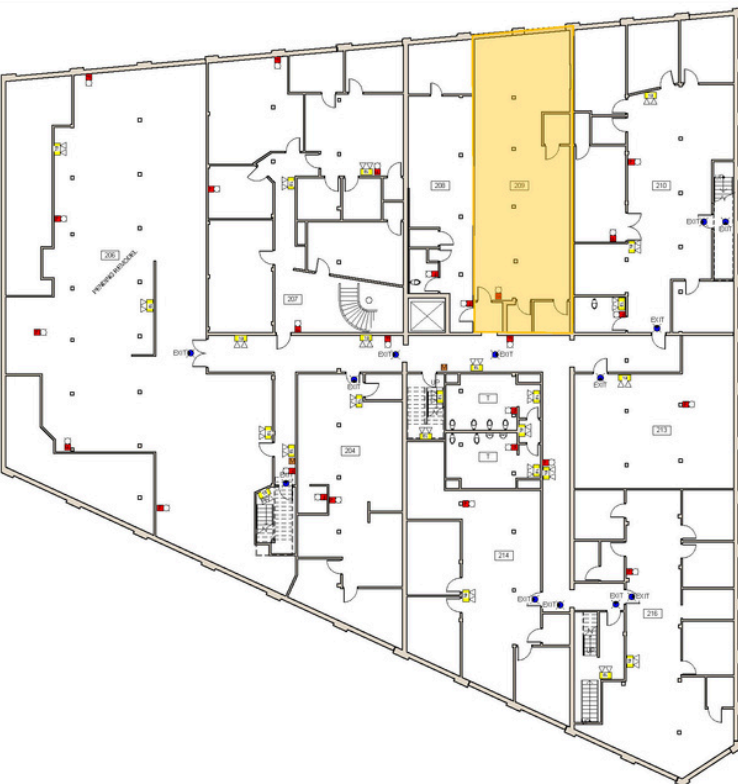
Available at market rates



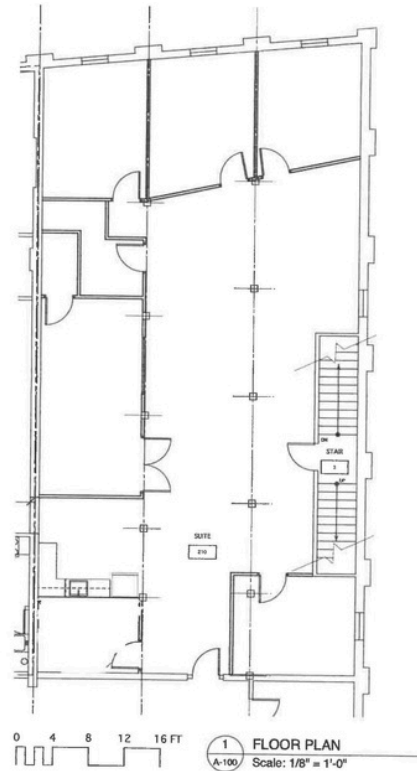
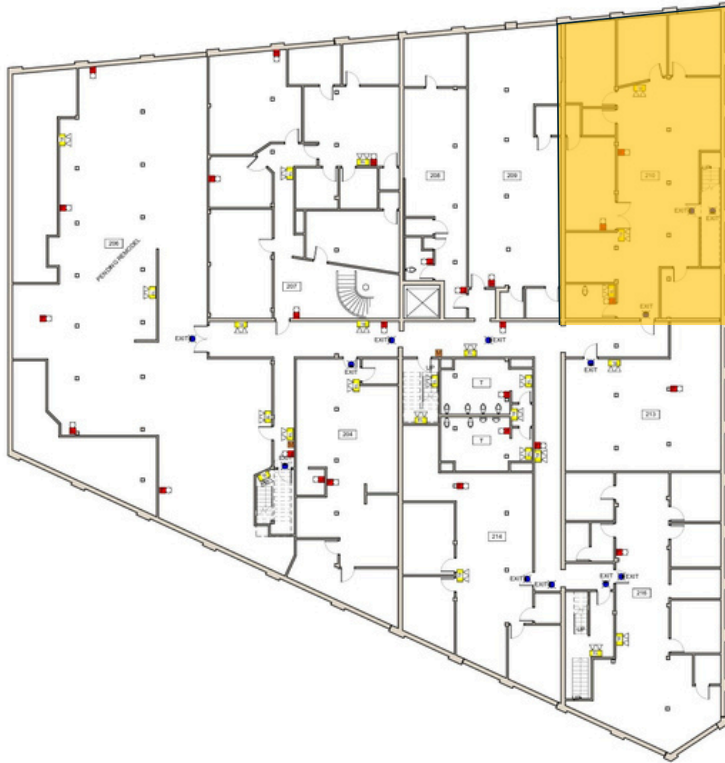
## Suite 207: 3,154± SF



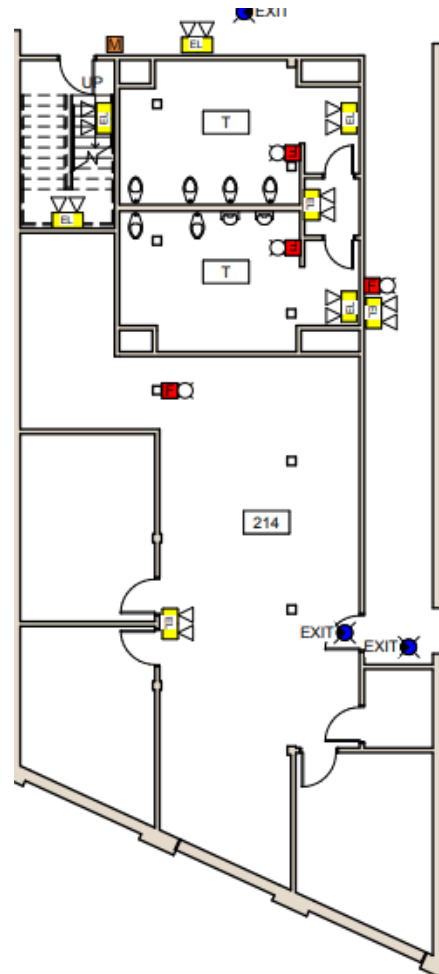
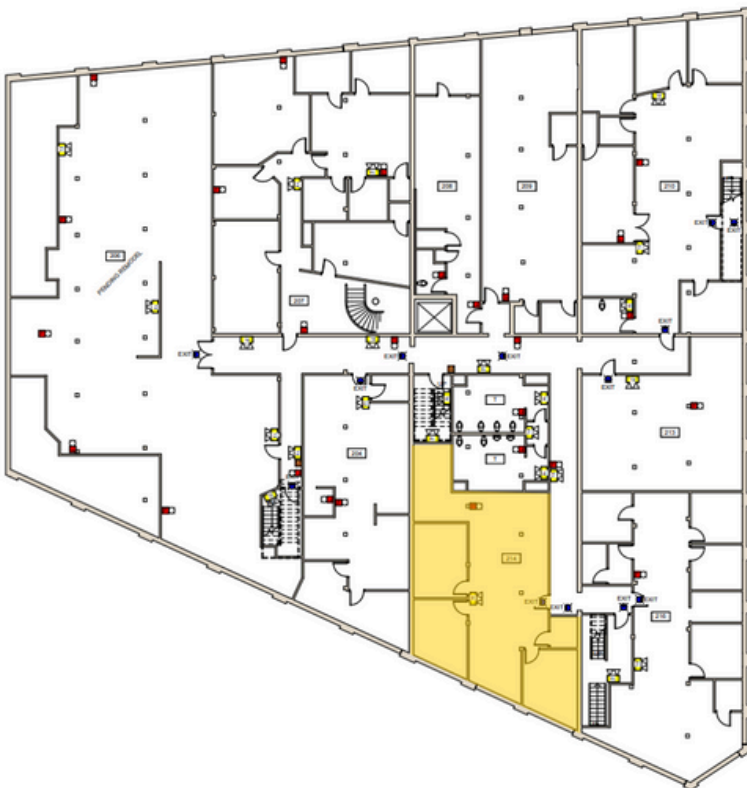
## Suite 209: 2,744± SF



## Suite 210: 2,750± SF



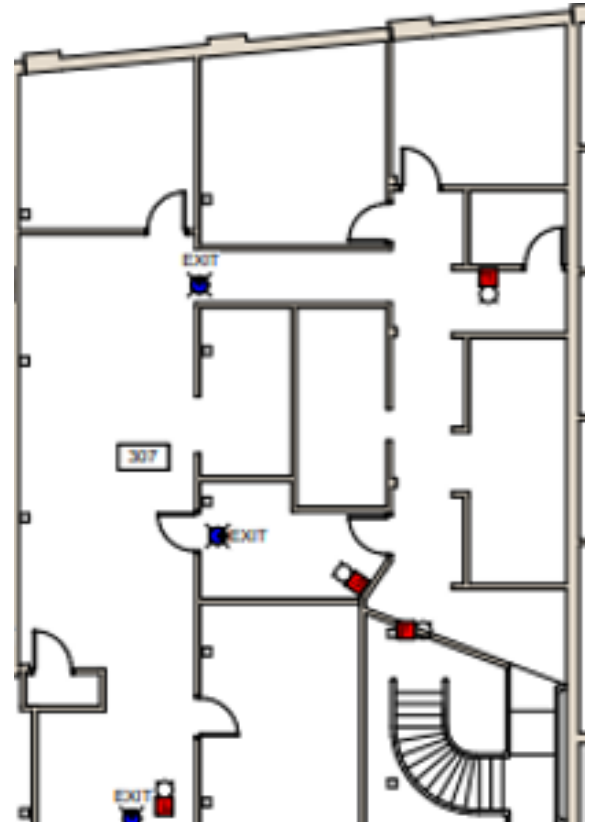
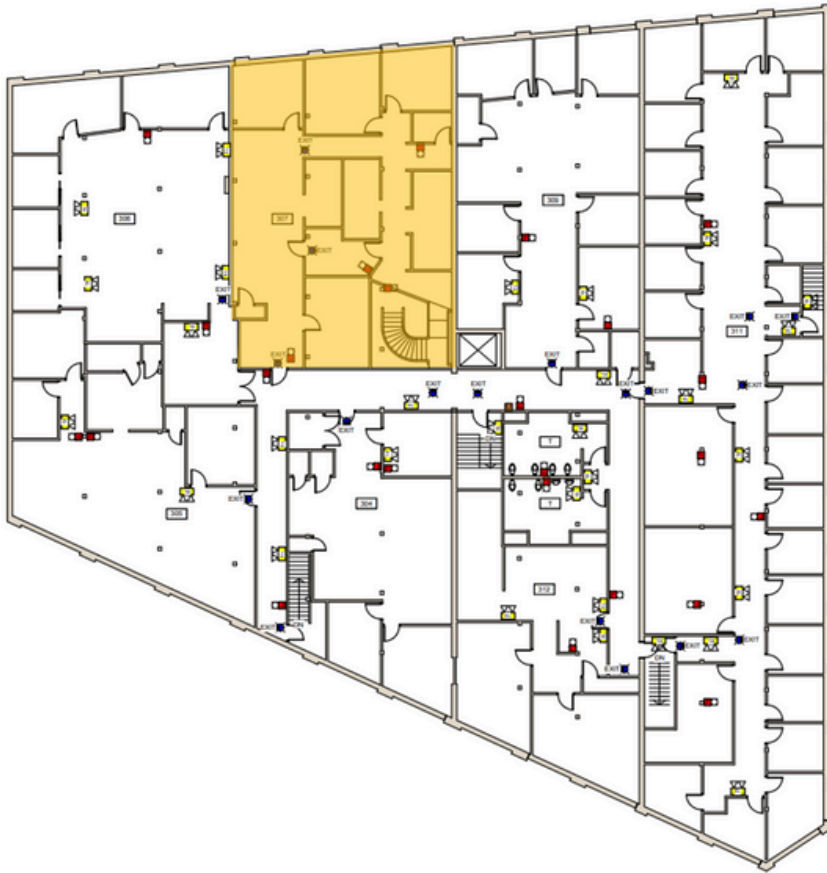
## ~~Suite 214: 1,827± SF~~ **LEASED**



## Suite 306: 3,787± SF



## Suite 307: 2,432± SF

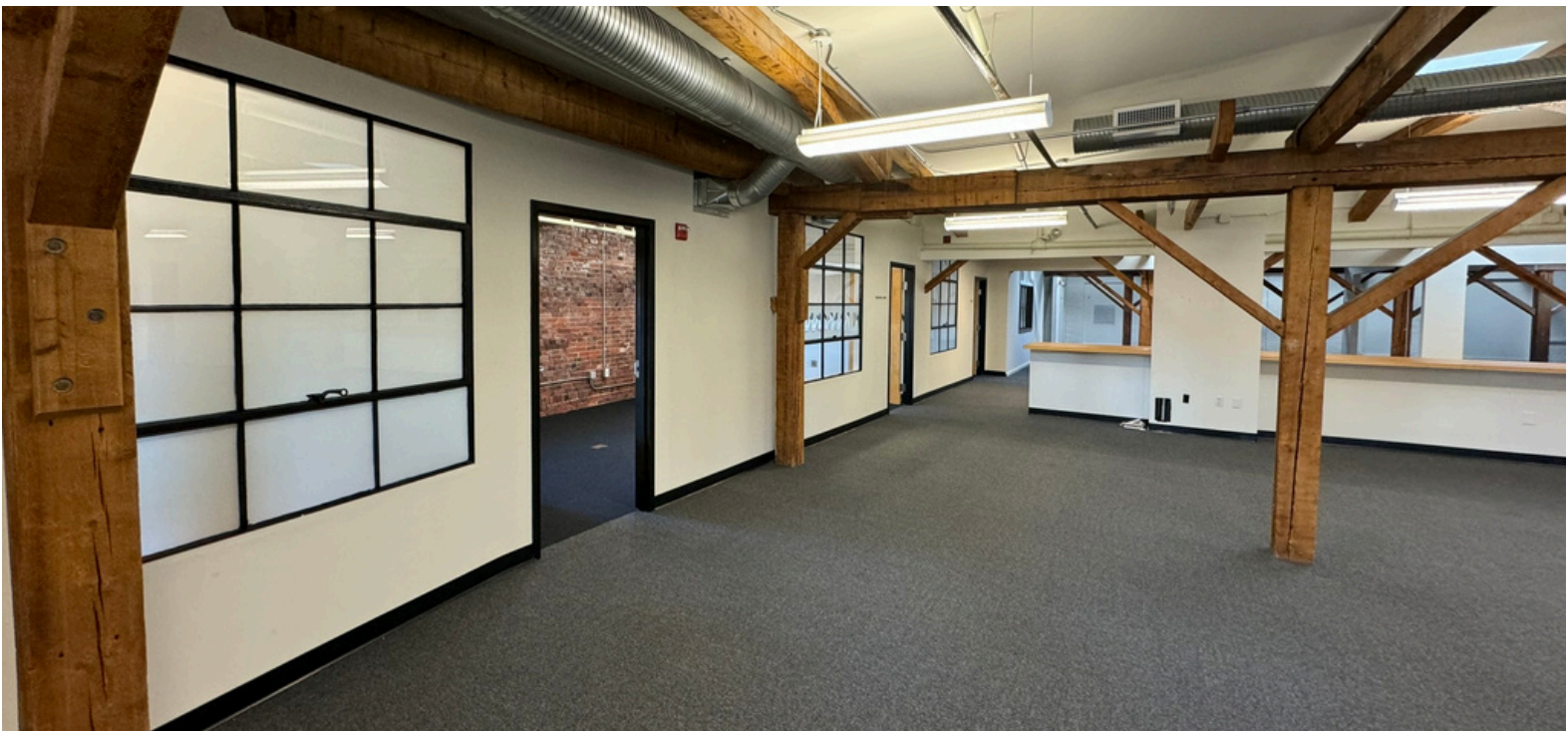




PORTA  
& CO.

# Building Photos

30 Danforth St. | Portland, ME 04101







## CONTACT



### Peter Gwilym

Broker  
c: 207-272-4262  
o: 207-558-0901  
pgwilym@portacompany.com



### Vince Ciampi

Broker  
c: 207-756-4563  
o: 207-747-1515  
vciampi@portacompany.com

This information has been obtained from sources believed reliable and is intended for informational use only. The information contained herein has not been verified for accuracy or completeness. It is recommended that prospective tenants and buyers conduct their own inspection of the property and verify all information. Any reliance on this information is solely at your own risk. Photos herein are the property of their respective owners. Use of these images without the express written consent of the owner is prohibited.

## PORTA & CO.

COMMERCIAL REAL ESTATE

30 Milk Street, Second Floor  
Portland, ME 04101  
207-747-1515  
www.portacompany.com