

**1993 UNION
AVE**

**1993 Union Avenue
Suite 1993
Memphis, TN 38104**

1993 Union Ave is located in the desirable midtown Memphis area along the Union Ave corridor situated at the had corner of Union Ave and S. Rembert St. Directly across from the busy Chick-fil-A, and one block from the bustling Overton Square. 1993 Union Ave is an three tenant retail center with national brand tenants Game Exchange and Smoothie king.

The available endcap space fronts Union Ave and Rembert St.

Agent Contact: John Schaffler | 901-299-9231



LEASE

Call for Rate

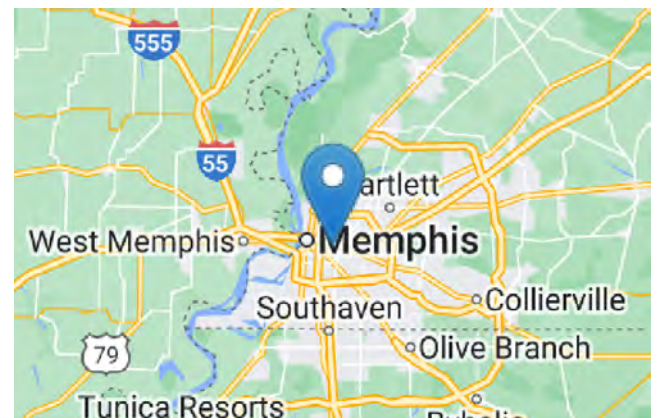
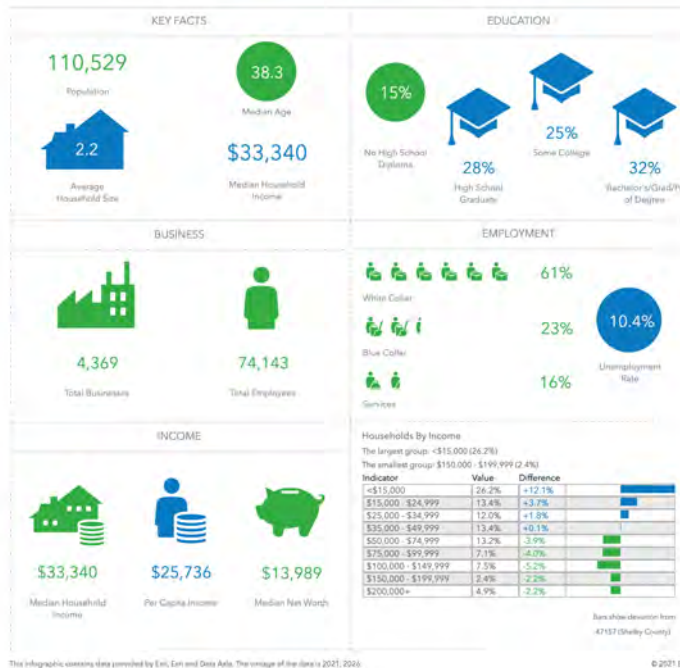
Rental Area: 2,653 Sq. Ft.

Contact:
662-265-3633
JOSH HOLCOMBE
josh@hcirealty.com



SPACE FOR LEASE

662-265-3633



This information has been obtained from sources believed reliable. We have not verified it and make no guarantee, warranty or representation about it. Any projections, opinions, assumptions or estimates used are for example only and do not represent the current or future performance of the property. You and your advisors should conduct a careful, independent investigation of the property to determine to your satisfaction the suitability of the property for your needs. Photos herein are the property of their respective owners and use of these images without the express written consent of the owner is prohibited.

