

COMCEN INDUSTRIAL CONDOS COOLER/FREEZER WAREHOUSE BAYS

3628-3638 NW 16TH STREET #B1-B6
LAUDERHILL, FL 33316



 **LEE &
ASSOCIATES**
COMMERCIAL REAL ESTATE SERVICES

C. TODD EVERETT, SIOR

Principal

561.414.8567

cteverett@lee-associates.com

TABLE OF CONTENTS

SITE OVERVIEW	3
Executive Summary	4
ComCen Commerce Park	5
Site Plans - Six Contiguous Units	6
Unit Photos	7
LOCATION INFORMATION	9
Regional Map	10
Aerial Map	11
Lauderhill, Florida	12
DEMOGRAPHICS	13
Demographic Profile: 10, 15, 30 min radius	14
Confidentiality & Disclaimer	17

MARKET ADVISORS

C. TODD EVERETT, SIOR

Principal
561.414.8567
cteverett@lee-associates.com

OFFERING MEMORANDUM DISCLAIMER

This Memorandum contains selected information pertaining to the Property and does not purport to be a representation of the state of affairs of the Property or the Owner, to be all-inclusive or to contain all or part of the information which prospective investors may require to evaluate a purchase of real property. All references to acreages, square footages, and other measurements are approximations. Additional information and an opportunity to inspect the Property will be made available to any interested persons. In this Memorandum, certain documents are described in summary form. These summaries do not purport to be complete nor necessarily accurate descriptions of the material referenced. Interested parties are expected to review all such summaries and other documents of whatever nature independently and not rely on the contents of this Memorandum in any manner.

Neither the Owner or Lee & Associates South Florida nor any of their respective officers, directors, employees, affiliates or representatives make any representation or warranty, express or implied, as to the accuracy or completeness of this Memorandum or any of its contents, and no legal commitment or obligation shall arise by reason of your receipt of this Memorandum or use of its contents; and you are to rely solely on your investigations and inspections of the Property in evaluating a possible purchase of the real property. The Owner expressly reserves the right, at its sole discretion, to reject any and all expressions of interest or offers to purchase the Property, and/ or to terminate discussions with any entity at any time with our without notice which may arise as a result of review of this Memorandum.

The Owner shall have no legal commitment or obligation to any person reviewing this Memorandum or making an offer to purchase the Property unless and until written agreement(s) for the purchase of the Property have been fully executed, delivered and approved by the Owner and any conditions to the Owner's obligations therein have been satisfied or waived.



SITE OVERVIEW

EXECUTIVE SUMMARY



ComCen Commerce Center

3628-3638 NW 16th St #B1-B6, Lauderhill, FL

\$2,550,000
Asking Price

7,560 SF
Contiguous Size, Units B1-B6

15'
Clear Ceilings

6
Grade Level Doors

PROPERTY HIGHLIGHTS

GLA:	7,560 SF
Units:	6 Units (B1-B6)
Year Built:	2005
Loading Doors:	6 Grade Level Doors
Door Height:	12'w x 14'h
Ceiling Height:	15' Clear

Six Contiguous Small Bay Industrial Condos

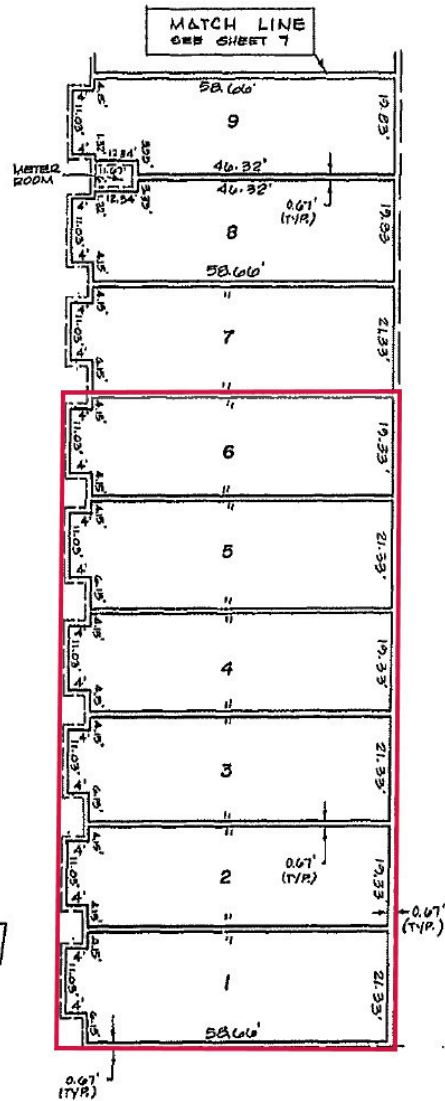
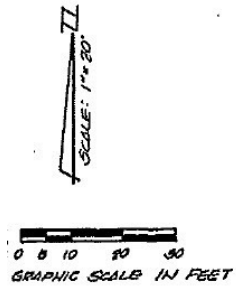
Refrigerated/Freezer Small Bay Owner-User or Investment!

- **Specialized Refrigerated Warehouse:** 1,563 SF built out office space with 70-80% of the warehouse area currently built out for refrigerated/freezer use, offering a rare plug-and-play solution for food distribution, cold storage, or specialty users.
- **Flexible Small-Bay Configuration:** Immediate functionality for owner-users while also offering flexibility to demize or lease to multiple tenants, well-suited for distribution, light manufacturing, or service-based businesses requiring practical, no-frills industrial space.
- **Strategic Broward Location:** Just east of US-441 with dual access from NW 16th and NW 15th Streets, the property offers excellent connectivity to major highways, labor pools, and regional logistics hubs including Fort Lauderdale and surrounding industrial corridors.
- **Condo Ownership with Lower Barriers to Entry:** Attainable ownership opportunity versus fee-simple assets, with stabilized maintenance and shared infrastructure, ideal for small business owners or investors seeking predictable operating costs and long-term appreciation.

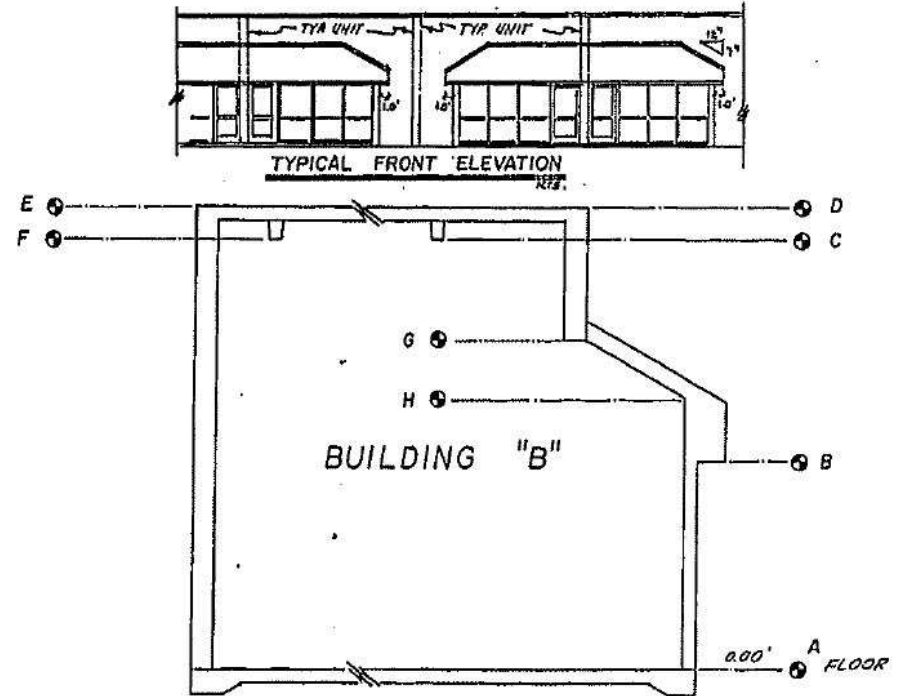
COMCEN COMMERCE PARK



SITE PLANS - SIX CONTIGUOUS UNITS



BUILDING "B"
HORIZONTAL BOUNDARIES



VERTICAL BOUNDARIES SECTION

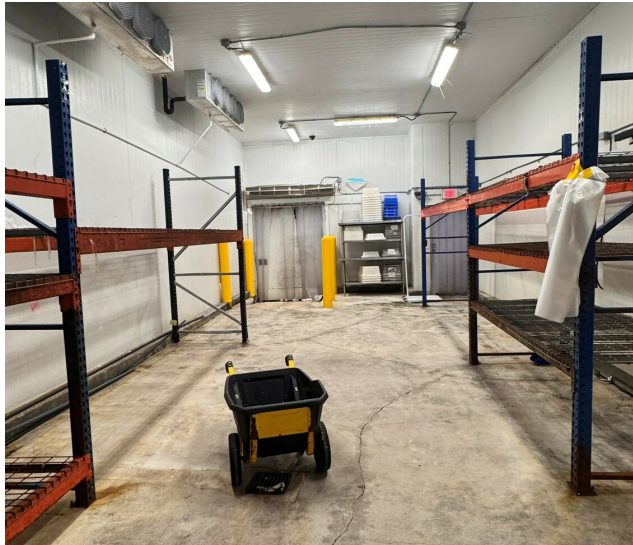
N.T.S.

	A	B	C	D	E	F	G	H
NORTH END OF BUILDING	3.81	15.98	23.72	23.09	24.22	23.22	22.51	18.11
MIDDLE OF BUILDING	6.86	15.94	23.73	25.12	24.24	23.29	20.52	18.07
SOUTH END OF BUILDING	6.82	15.96	23.71	25.11	24.21	23.20	20.50	18.13

UNIT PHOTOS



UNIT PHOTOS



LOCATION INFORMATION

ComCen
Commerce Park

3628



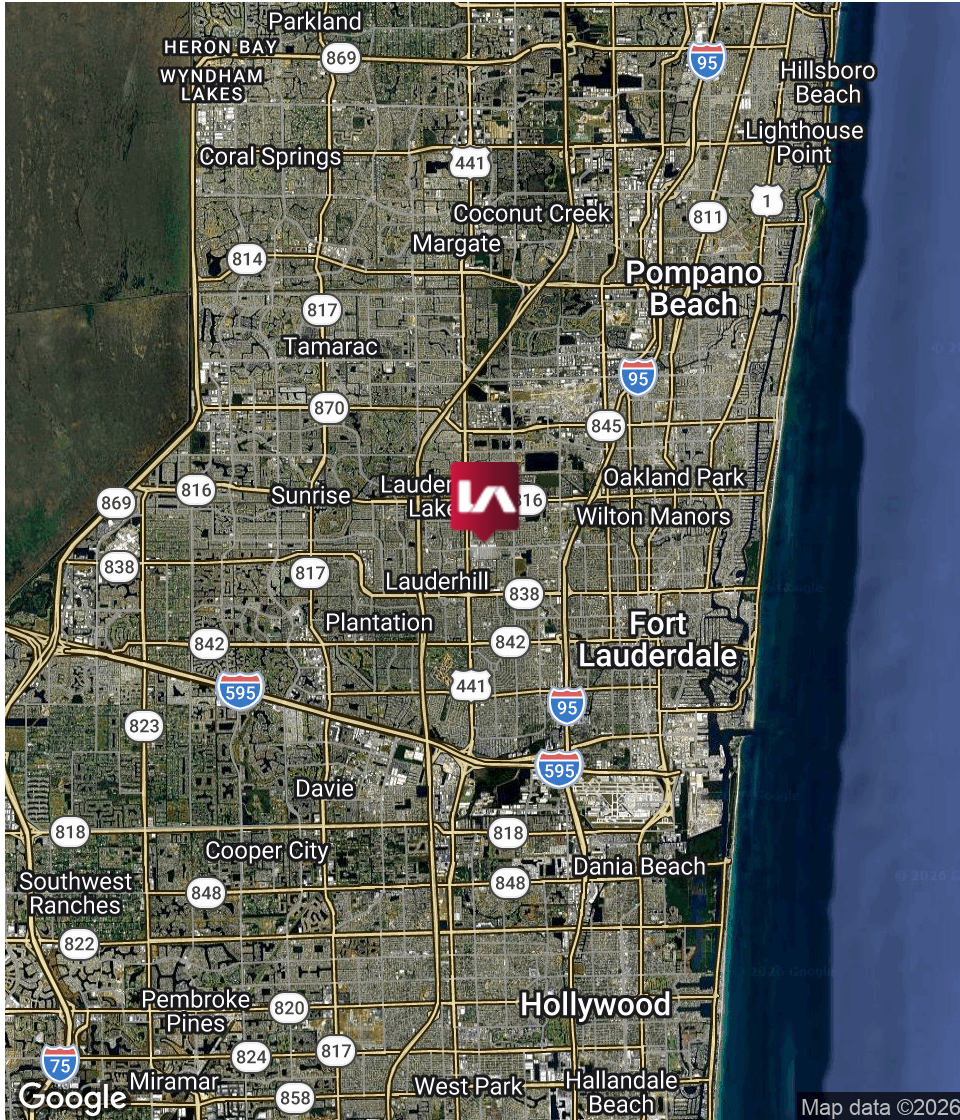
3662

3664



3698

REGIONAL MAP



LOCATION OVERVIEW

Positioned in central Broward County just east of US-441, the property provides convenient access to key transportation routes and surrounding industrial hubs. The location supports efficient connectivity to Fort Lauderdale, I-95 corridors, and regional logistics infrastructure.

CITY INFORMATION

CITY: Lauderdale
 MARKET: South Florida
 SUBMARKET: Lauderdale

LAUDERHILL, FLORIDA



WHERE ACCESS MEETS OPPORTUNITY

Lauderhill, Florida is quickly emerging as a strategic hub for small-bay industrial users and investors, offering a rare combination of central Broward County access, affordability, and long-term upside. Positioned just east of US-441, businesses benefit from seamless connectivity to I-95, the Florida Turnpike, Port Everglades, and Fort Lauderdale-Hollywood International Airport—supporting efficient distribution, service operations, and regional reach. The surrounding industrial market remains stable and supply-constrained, with historically low vacancy and steady demand reinforcing the strength of small-bay assets in this submarket.

Adding to its appeal, the nearby Lauderdale Arts & Entertainment District is driving renewed investment and community engagement, enhancing the area's visibility and long-term growth trajectory. This evolving environment, combined with a dense local workforce and established business base, positions Lauderdale as an ideal location for owner-users seeking control of occupancy costs and investors targeting durable, income-producing assets with appreciation potential.

KEY BENEFITS

- **Central Broward Location:** Immediate access to US-441 with close proximity to I-95 and the Florida Turnpike, enabling efficient regional logistics and connectivity.
- **Strong Small-Bay Demand:** Limited supply and consistent occupancy trends support stable leasing fundamentals and long-term value growth.
- **Owner-User Advantage:** Opportunity to control occupancy costs, build equity, and hedge against rising industrial rents.
- **Revitalization Momentum:** Proximity to the Lauderdale Arts & Entertainment District enhances area appeal and supports future property value appreciation.
- **Accessible Labor Pool:** Surrounded by established residential communities providing a reliable and nearby workforce.
- **Functional Industrial Use:** Ideal for light manufacturing, distribution, trades, and service-oriented businesses requiring flexible space.

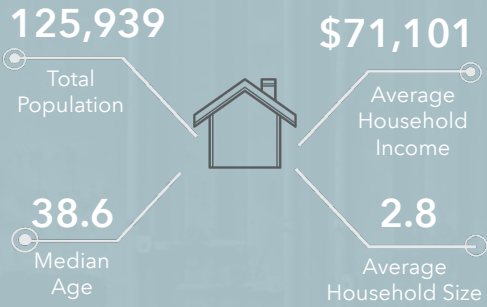


DEMOGRAPHICS



DEMOGRAPHIC PROFILE: 10, 15, 30 MIN RADIUS

KEY FACTS

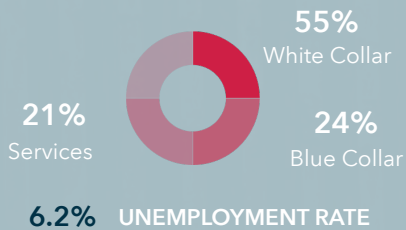


DAYTIME POPULATION

Total Daytime Population
102,021

Residents: 67,016
Workers: 35,005

EMPLOYMENT



BUSINESS & INDUSTRY



Transportation/Warehouse

145
Businesses

989
Employees

\$222,591,618
Sales

Manufacturing

162
Businesses

3,027
Employees

\$107,062,789
Sales

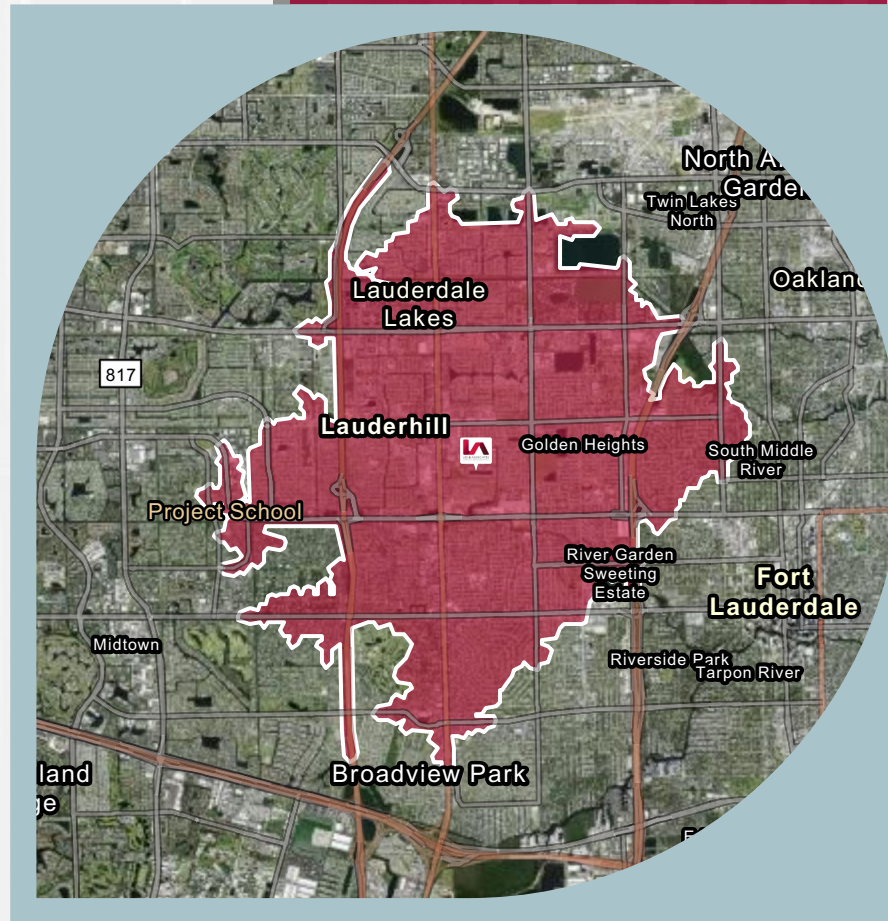
Wholesale Trade

136
Businesses

817
Employees

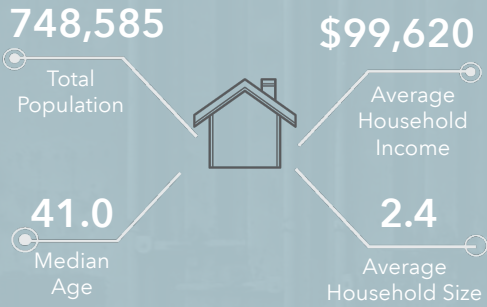
\$1,168,708,449
Sales

Drive time of 10 minutes



DEMOGRAPHIC PROFILE: 10, 15, 30 MIN RADIUS

KEY FACTS

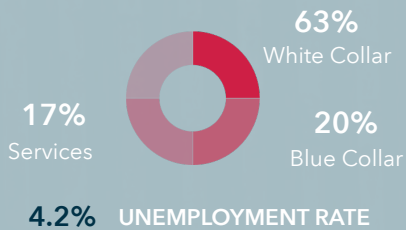


DAYTIME POPULATION

Total Daytime Population
789,880

Residents: 352,567
Workers: 437,313

EMPLOYMENT



BUSINESS & INDUSTRY



Transportation/Warehouse

1,701
Businesses

20,508
Employees

\$3,636,182,547
Sales

Manufacturing

1,293
Businesses

14,009
Employees

\$2,118,919,504
Sales

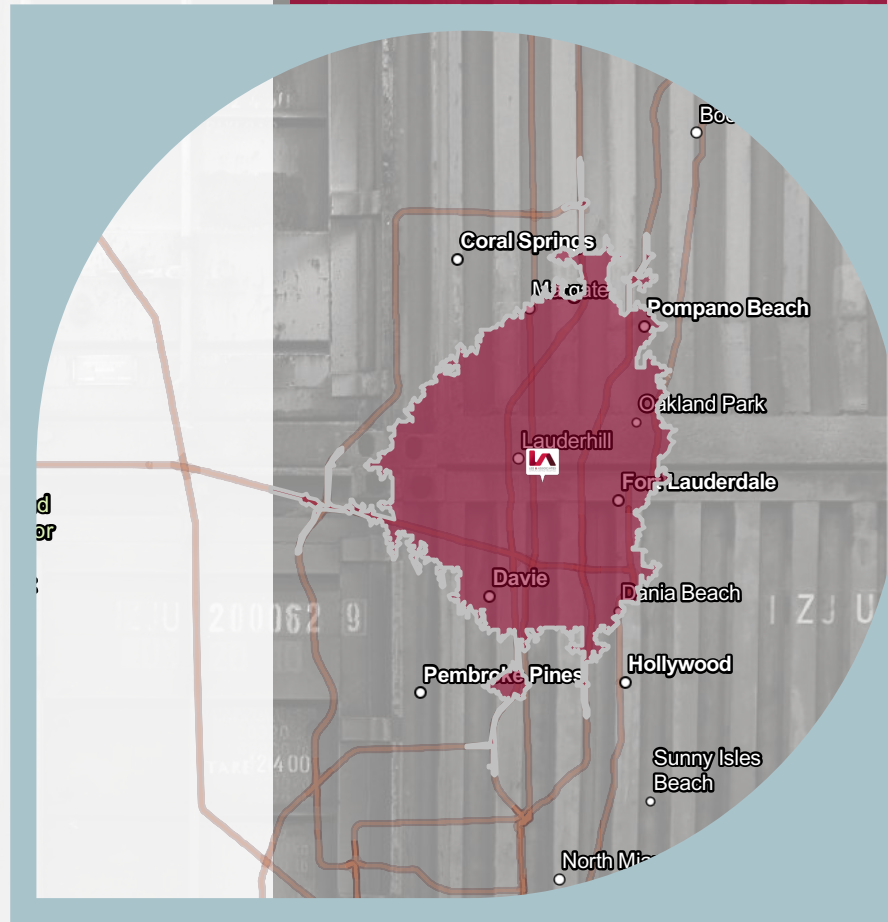
Wholesale Trade

1,719
Businesses

24,668
Employees

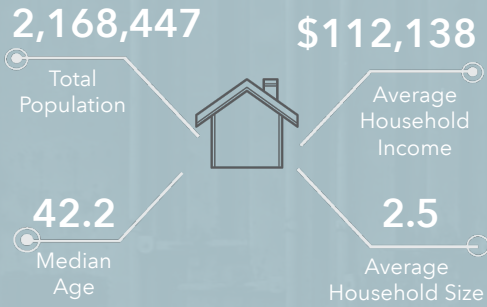
\$37,424,174,093
Sales

Drive time of 20 minutes

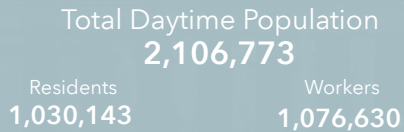


DEMOGRAPHIC PROFILE: 10, 15, 30 MIN RADIUS

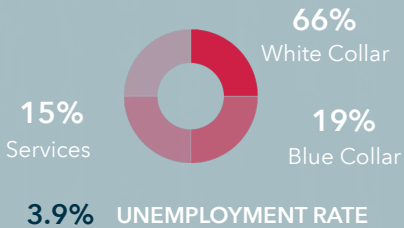
KEY FACTS



DAYTIME POPULATION



EMPLOYMENT



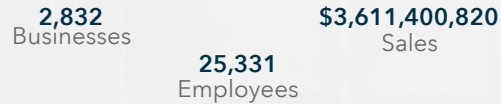
BUSINESS & INDUSTRY



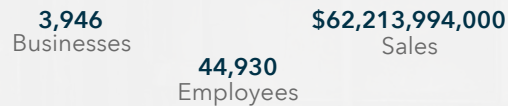
Transportation/Warehouse



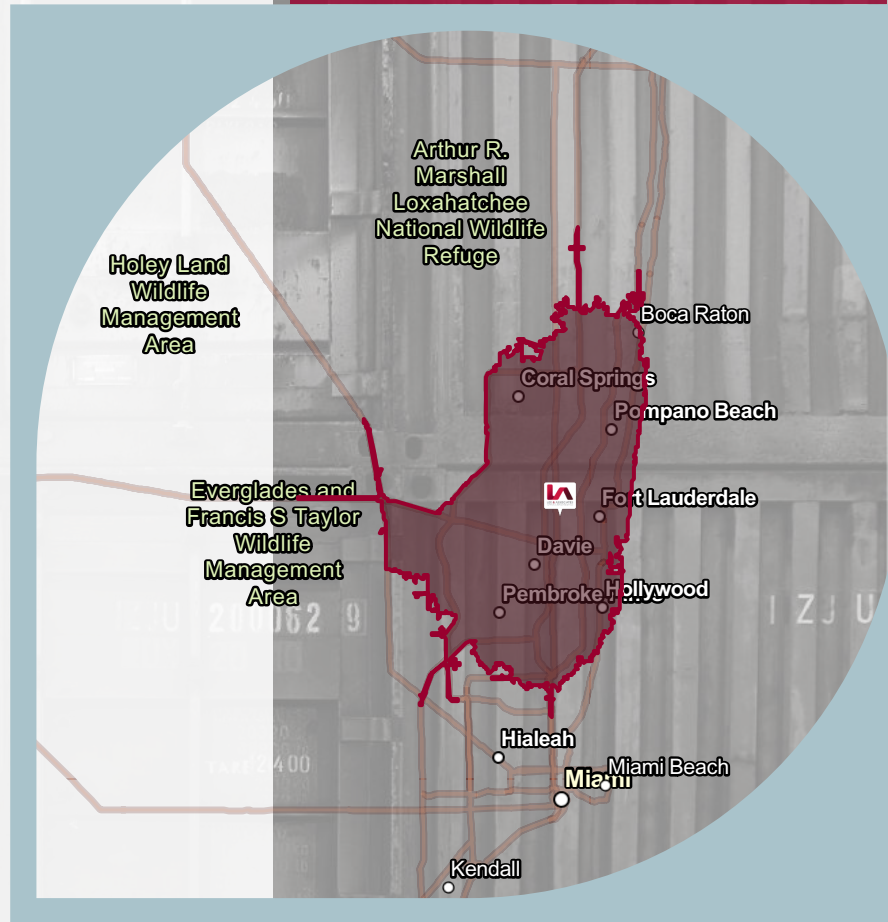
Manufacturing



Wholesale Trade



Drive time of 30 minutes



CONFIDENTIALITY & DISCLAIMER

All materials and information provided by Lee & Associates South Florida, including those received or derived from its directors, officers, agents, advisors, affiliates, and/or third-party sources, are furnished without any representation or warranty as to completeness, accuracy, or veracity. This includes, without limitation, information relating to the condition of the property, compliance or non-compliance with applicable governmental requirements, developability or suitability, financial performance, projected financial performance, or any other matters.

Neither Lee & Associates South Florida nor its directors, officers, agents, advisors, or affiliates make any representation or warranty, express or implied, regarding the accuracy or completeness of any materials or information provided, received, or derived. Any materials or information—whether written or verbal—are not a substitute for a party's independent investigation and due diligence. Lee & Associates South Florida does not investigate or verify such information, nor conduct due diligence on behalf of any party, unless expressly agreed to in writing.

EACH PARTY SHALL CONDUCT ITS OWN INDEPENDENT INVESTIGATION AND DUE DILIGENCE.

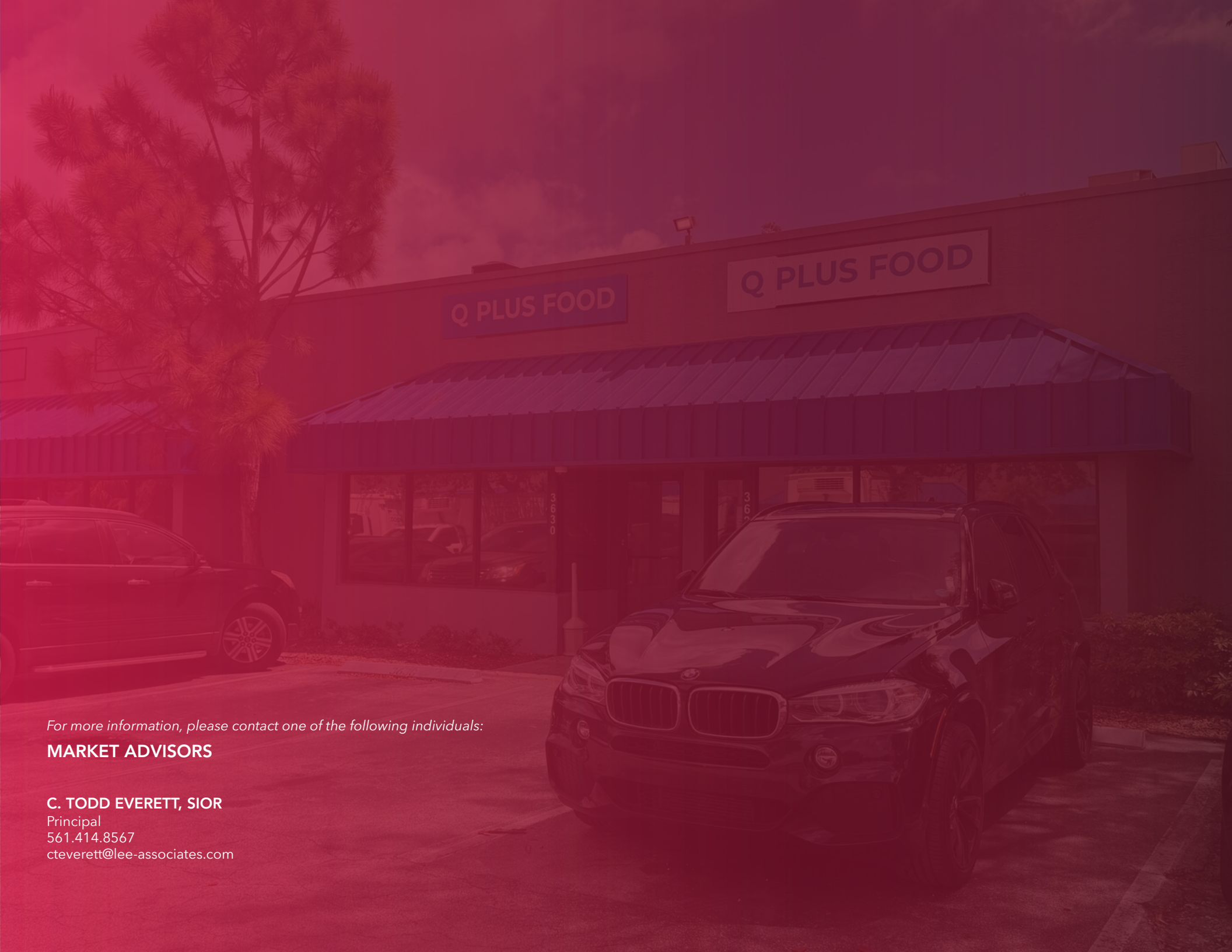
Any party contemplating, under contract for, or in escrow for a transaction is strongly encouraged to verify all information and to conduct its own inspections and investigations, including engaging appropriate independent third-party professionals of its choosing. All financial data should be independently verified by the party, including through review of applicable documents and consultation with qualified professionals. Lee & Associates South Florida makes no representations or warranties regarding the accuracy, completeness, or relevance of any financial data, assumptions, or projections and does not act as a financial advisor in connection with any transaction.

All estimates of market rents, projected rents, or financial performance are subject to change and may differ materially from actual results. The inclusion of such estimates does not imply that rents can be achieved or increased to those levels. Parties must evaluate all applicable contractual obligations, governmental regulations, market conditions, vacancy factors, and other relevant considerations when determining rents or financial performance.

Legal matters should be reviewed with a qualified attorney. Tax matters should be discussed with a certified public accountant or tax attorney. Title matters should be reviewed with a title officer or attorney. Questions regarding property condition or compliance with governmental requirements should be addressed with appropriate engineers, architects, contractors, consultants, and governmental agencies. All properties and services are marketed by Lee & Associates South Florida in compliance with all applicable fair housing and equal opportunity laws.

This material is not intended to be an appraisal of the property's market value. If an appraisal is desired, the services of a licensed or certified appraiser should be obtained. This report is not intended to comply with the Uniform Standards of Professional Appraisal Practice (USPAP).





Q PLUS FOOD

Q PLUS FOOD

For more information, please contact one of the following individuals:

MARKET ADVISORS

C. TODD EVERETT, SIOR

Principal

561.414.8567

cteverett@lee-associates.com