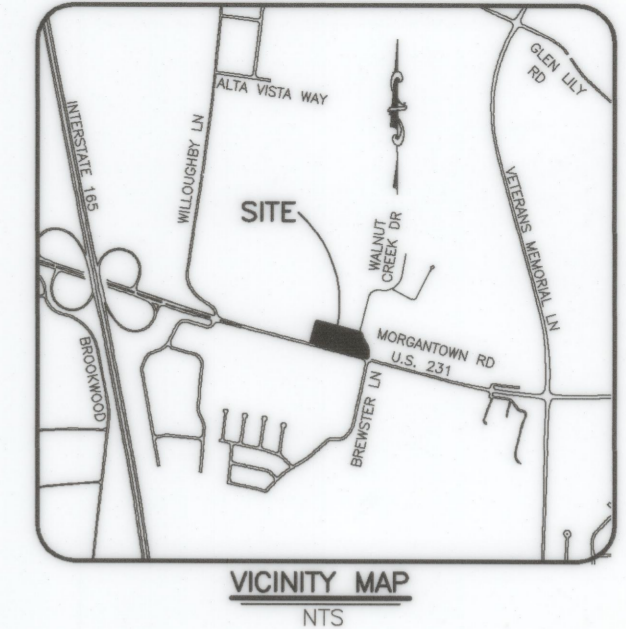


LOGGED AND RECORDED  
 LYNETTE YATES  
 WARREN COUNTY CLERK  
 Recorded May 18, 2022  
 2022 MAY 18 PM 1:10  
 C-1220



③  
 P.B. 38 PG. 461-464  
 VILLAGE AT JENNINGS CREEK &  
 WILLIAM Y. & GEORGE ANNA MCKENZIE SUBDIVISION

VISION ENGINEERING, LLC  
 DEED BK 1086 PG 378

027A-01

DETAIL  
 NTS



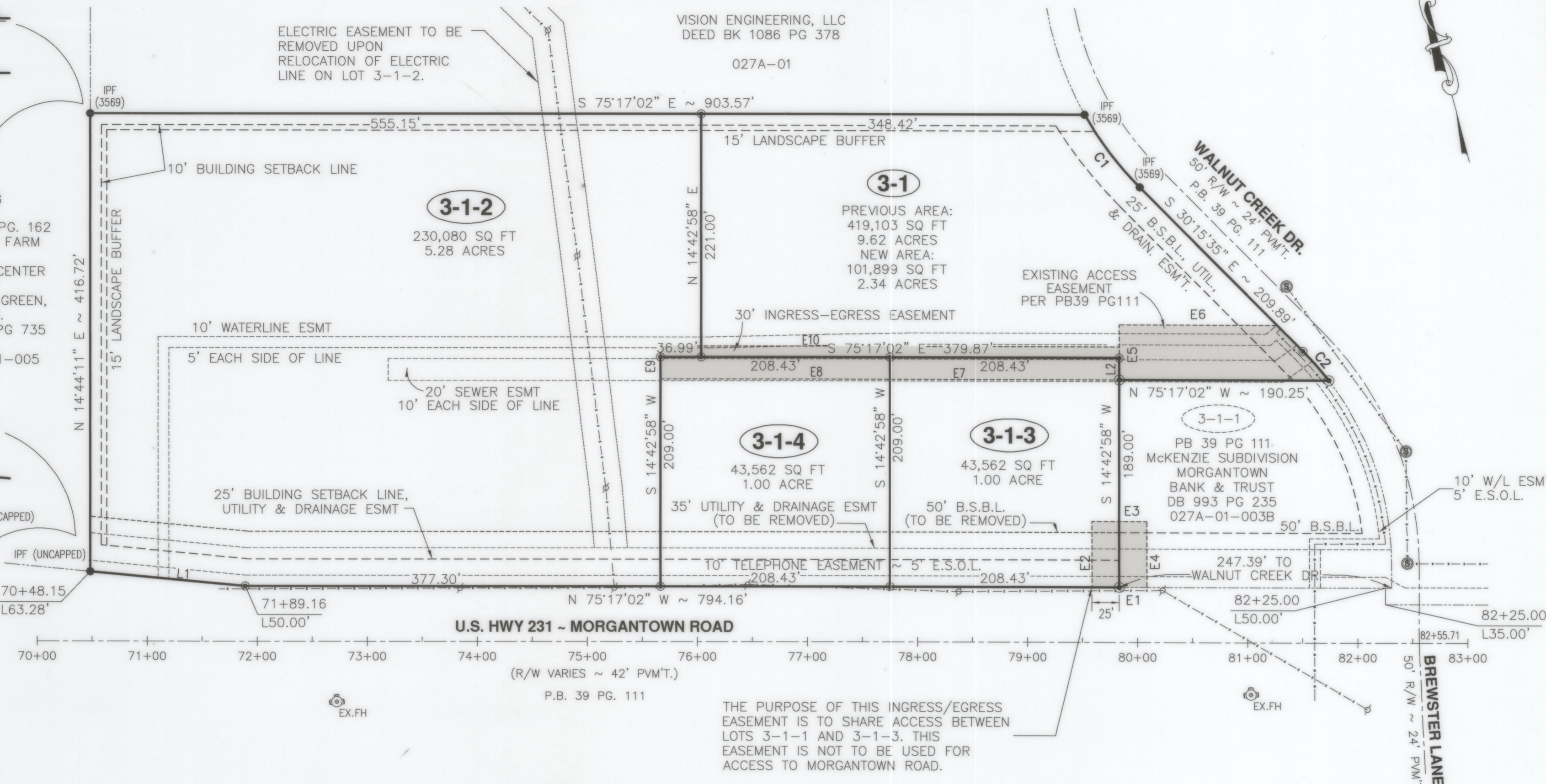
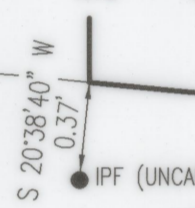
⑤

P.B. 29 PG. 162  
 HOBSON FARM

ISLAMIC CENTER  
 OF  
 BOWLING GREEN,  
 INC.  
 DB 859 PG 735

027A-01-005

DETAIL  
 NTS



THE PURPOSE OF THIS INGRESS/EGRESS  
 EASEMENT IS TO SHARE ACCESS BETWEEN  
 LOTS 3-1-1 AND 3-1-3. THIS  
 EASEMENT IS NOT TO BE USED FOR  
 ACCESS TO MORGANTOWN ROAD.

WCWD  
 Thomas Simpson  
 3/22/2022

LINE TABLE:

LINE	BEARING	DISTANCE
L1	N 69°54'10" W	141.63'
L2	S 14°42'58" W	20.00'

EASEMENT TABLE:

LINE	BEARING	DISTANCE
E1	N 75°17'02" W	50.00'
E2	N 14°42'58" E	60.00'
E3	S 75°17'02" E	50.00'
E4	S 14°42'58" W	60.00'
E5	N 14°42'58" E	50.00'
E6	S 75°17'02" E	143.50'
E7	N 75°17'02" W	208.43'
E8	N 75°17'02" W	208.43'
E9	N 14°42'58" E	30.00'
E10	S 75°17'02" E	416.86'

CURVE TABLE:

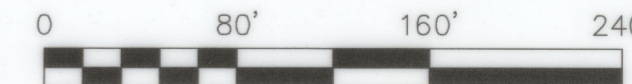
CURVE	RADIUS	ARC LENGTH	CHORD LENGTH	CHORD BEARING	DELTA ANGLE
C1	305.00'	83.04'	82.79'	S 22°27'36" E	15°35'59"
C2	275.00'	35.37'	35.35'	S 26°34'30" E	7°22'12"

STATE OF KENTUCKY  
 THADDAEUS J.  
 LUCAS  
 2569  
 LICENSED  
 PROFESSIONAL  
 LAND SURVEYOR

5-11-22

LEGEND:

- IRON PIN SET
- IRON PIN FOUND
- EXISTING POWER POLE
- SEWER MANHOLE
- EXISTING SEWER
- EXISTING WATERLINE
- EXISTING OVER HEAD ELECTRIC
- 10' WATERLINE ESM'T  
5' EACH SIDE OF LINE
- 20' SEWER LINE ESM'T  
10' EACH SIDE OF MAIN
- ▭ INGRESS/EGRESS ESM'T.



Drawing Scale: 1"=80'

File location: Projects\18055\18055-Record Plat.dwg

**WILLIAM Y. & GEORGE ANNA  
 MCKENZIE SUBDIVISION**  
 REVISION OF LOT 3-1  
 PREVIOUSLY RECORDED IN PLAT BOOK 39 PAGE 111  
 BOWLING GREEN, WARREN COUNTY, KY

**LEI  
 LANDMARK  
 ENGINEERING**

Civil Engineering  
 Transportation  
 Materials Testing  
 Land Surveying  
 Land Planning  
 Landscape Architecture

Landmark Engineering, Inc.  
 183 Saint Charles Street  
 Bowling Green, KY 42101  
 P: 270.842.0812  
 F: 270.842.0910  
 lei@landmarkengineering.net

Drawn By: M. Lawrence  
 Checked By: T. Lucas  
 Approved By: T. Lucas

Job Number: 18055

Plot Date: May. 11, 2022

RECORD PLAT  
 SHEET  
 2 of 2