

FOR LEASE: OUTPATIENT MEDICAL SPACE



Good Samaritan Medical Building

799-4,024 RSF Available

3219 Central Ave, Kearney, NE 68847

Proudly owned by

Healthpeak® | **DOC
LISTED
NYSE**

LIBBY LANGENDERFER, DIRECTOR - LEASING
414.367.5534 | LLangenderfer@healthpeak.com

NORTHWEST MEDICAL PLAZA

3219 Central Ave, Kearney, NE 68847



CAMPUS SETTING

On-Campus
CHI Good Samaritan

BUILDING DETAILS

+/- 112,000 RSF
Three stories

AVAILABLE

Suite 101: 799 RSF
Suite 103: 1,606 RSF
Suite 107: 2,574 RSF
Suite 111: 4,024 RSF

ACCESS

Convenient access to US 30 via 2nd Ave

PROPERTY OVERVIEW

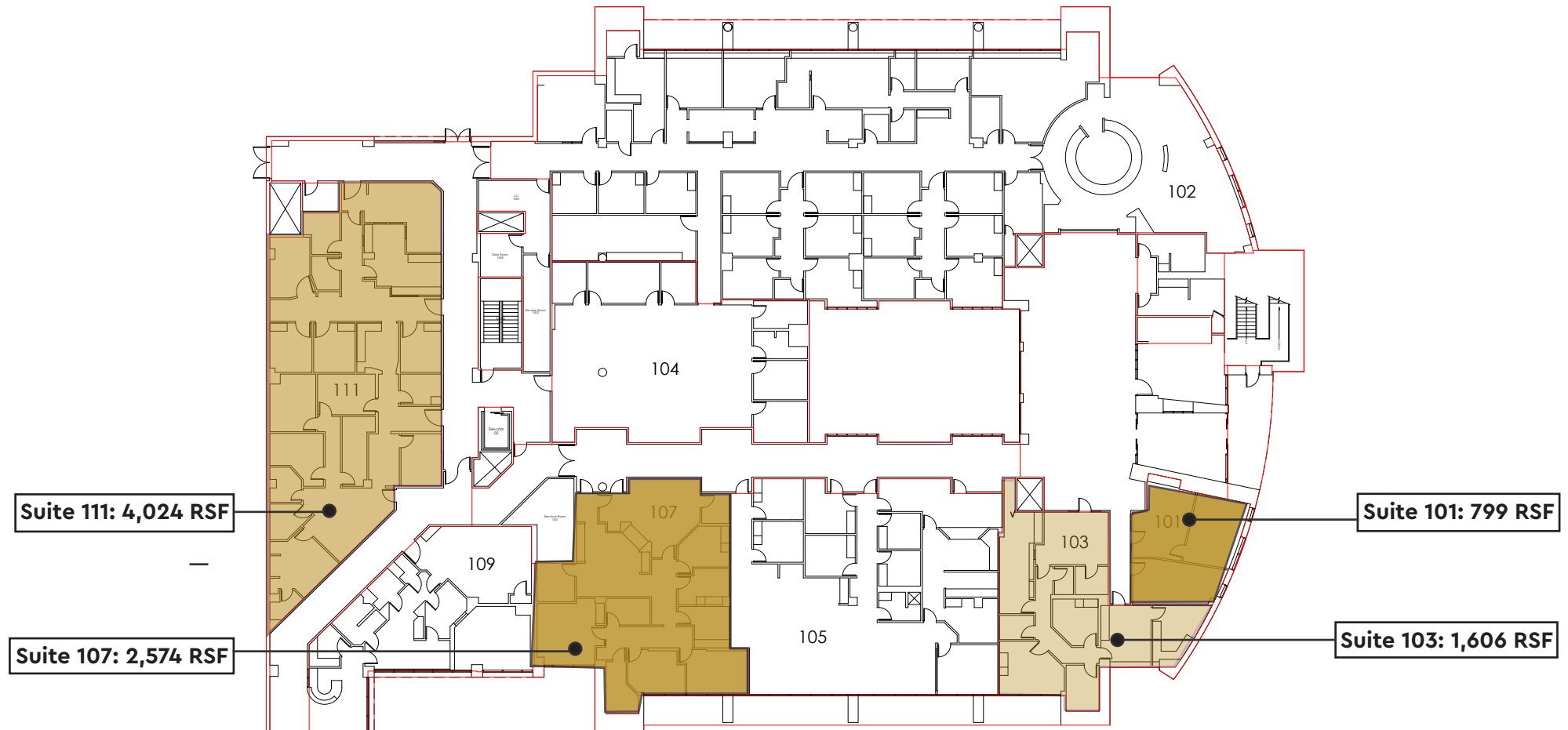
Good Samaritan Medical Office Building was built in 1999 and is located on the CHI Good Samaritan Campus. The CHI Good Samaritan Hospital is a full service acute care hospital located in Kearney and is the main hub for medical services in Central Nebraska. This outpatient medical building is directly connected to the hospital. Professional property management services by the owner.

Proudly owned by

Healthpeak® | **DOC**
LISTED
NYSE

LIBBY LANGENDERFER, DIRECTOR - LEASING
414.367.5534 | LLangenderfer@healthpeak.com

FIRST FLOOR



Proudly owned by

Healthpeak[®] | **DOC
LISTED
NYSE**

LIBBY LANGENDERFER, DIRECTOR - LEASING
414.367.5534 | LLangenderfer@healthpeak.com



Healthpeak[®] | **DOC**
LISTED
NYSE

LIBBY LANGENDERFER
Direct 414.367.5534
LLangenderfer@healthpeak.com