

220 MADISON AVENUE

SW CORNER OF MADISON AVENUE & E 37TH STREETS | MURRAY HILL | NEW YORK



220 MADISON AVENUE

SW CORNER OF MADISON AVENUE & E 37TH STREETS
MURRAY HILL | NEW YORK

EXCLUSIVE OFFERING

Norman Bobrow & Co., Inc. is please to offer the to acquire a medical office (Coop). Located at 220 Madison Avenue built in 1940, known as the John Murray House, this beautiful pre-war apartment building spans Madison Avenue from 36th to 37th Streets and is directly across the street from the Morgan Library, a National Historic Landmark.

SPACE INFORMATION

Address	220 Madison Avenue, New York, NY 10016
Property Type	Medical Office (Coop)
Units	3
Coop Size	4,420 SF
Basement SF	800 SF
Zoning	C5-2

NOTES

- 12 Exams Rooms • 5 Offices • 3 Bathrooms
- Coop would accept a non-medical user

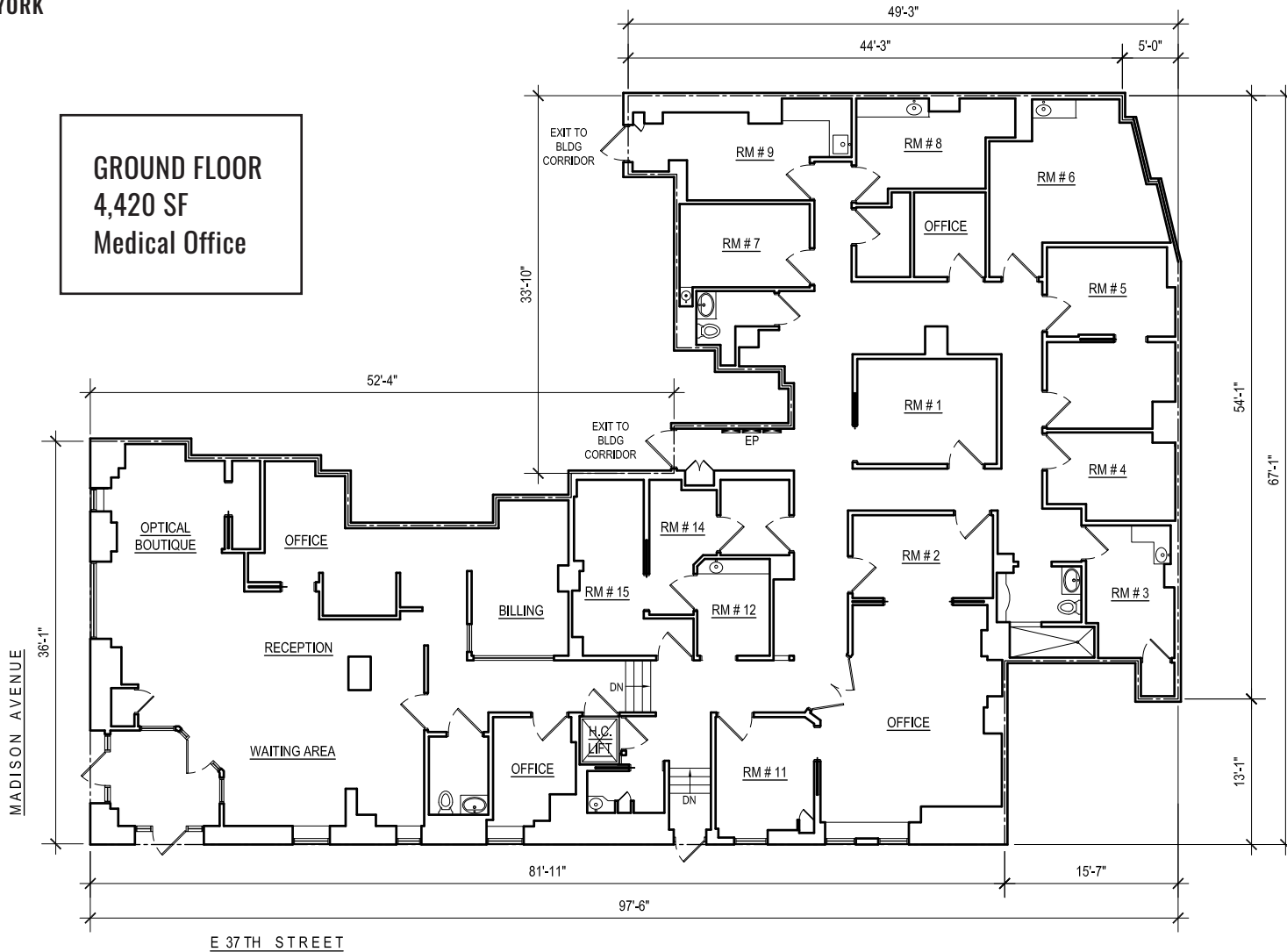
ASKING PRICE: \$3,750,000.00



220 MADISON AVENUE

SW CORNER OF MADISON AVENUE & E 37TH STREETS
MURRAY HILL | NEW YORK

GROUND FLOOR
4,420 SF
Medical Office



FIRST LEVEL EXISTING CONDITIONS

Scale: 3/32" = 1'-0"



220 MADISON AVENUE

SW CORNER OF MADISON AVENUE & E 37TH STREETS
MURRAY HILL | NEW YORK

ABOUT MURRAY HILL

Murray Hill offers plenty to attract those interested in NYC's dining and nightlife scenes. The neighborhood is also a boon for culture lovers. On these streets, lined with prewar townhouses and Beaux-Arts mansions, you can find the Morgan Library & Museum, gifting the City with an enormous collection of rare books; and the sleek, modernist Scandinavia House Murray Hill's tree-lined streets are filled with townhouses, modern apartment buildings and businesses. It's a popular home for recent college graduates and young professionals, who frequent the bars along Lexington and Third Avenues.

Closest subway stations in this versatile Midtown neighborhood are the 4, 5, 6, 7 trains. Murray Hill's location makes it an ideal neighborhood for many professionals that work in Midtown. For many commuters, the proximity to Grand Central Station is especially convenient.

David Badner
Managing Director
(212) 682-2269
dbadner@normanbobrow.com

Jonathan Kershner
Director
(201) 546-4656
jkershner@normanbobrow.com

