



**SWOPE
LEES**
COMMERCIAL
REAL ESTATE

**540 E UNION STREET, SUITE C
FLEX SPACE FOR LEASE**

540 E UNION ST WEST CHESTER, PA 19382

610.429.0200
swopelees.com



PROPERTY DESCRIPTION

Welcome to 540 E Union St, West Chester, PA! This remarkable property offers the ideal space for your next business venture. Boasting a prime location, this lease opportunity features flexible floor plan perfect for various business needs. With high ceilings, and customizable layouts, this property sets the stage for a dynamic and inviting work environment. The sleek exterior and ample parking add convenience, while nearby amenities provide added appeal.

PROPERTY HIGHLIGHTS

- 4,500SF of Flex Space in Suite C
- 18' Clear Height & 2 Loading Docks
- Flexible Floorplan
- All Public Utilities
- Abundant on-site Parking
- Conveniently located in West Chester Borough Industrial Park

OFFERING SUMMARY

Lease Rate:	\$14.00 SF/yr (NNN)
Number of Units:	1
Available SF:	4,500 SF
Lot Size:	125,738 SF
Building Size:	40,014 SF

DEMOGRAPHICS	1 MILE	3 MILES	5 MILES
Total Households	6,747	23,016	44,714
Total Population	19,040	61,978	119,472
Average HH Income	\$142,883	\$158,702	\$174,614

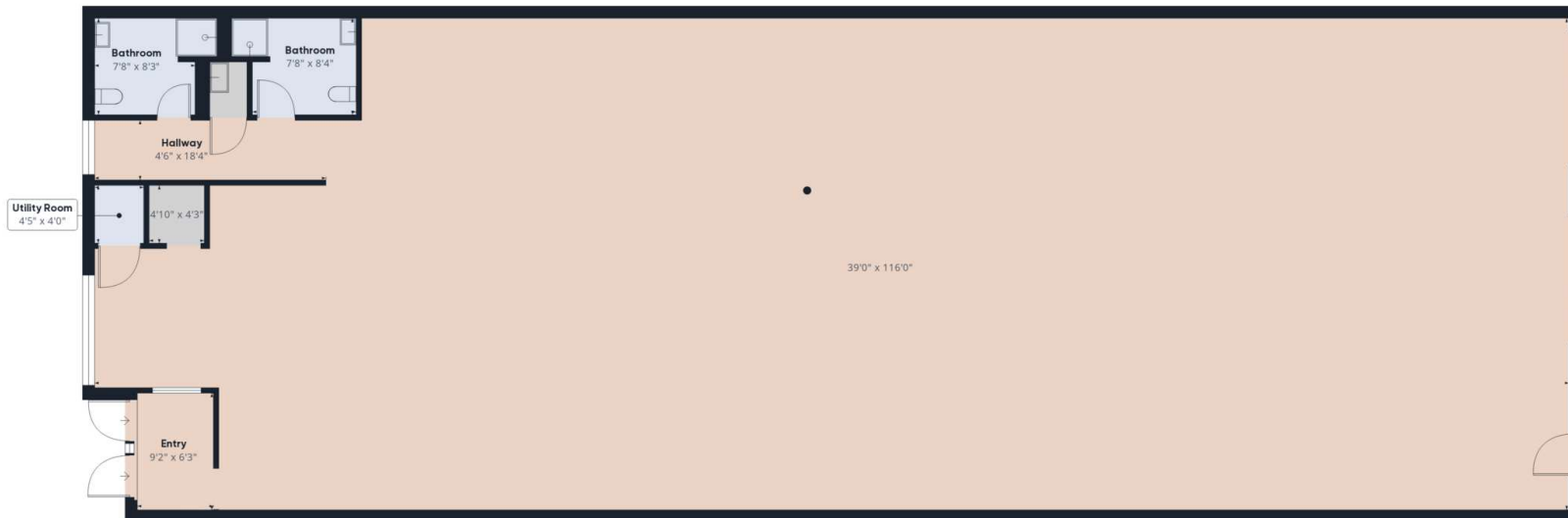


540 E UNION STREET, SUITE C
540 E Union St
West Chester, PA 19382

KAITIE O'GRADY
kaitie@swopelees.com
610.429.0200

CHUCK SWOPE, CCIM
chuck@swopelees.com
610.429.0200 x101





Approximate total area⁽¹⁾
4442.48 ft²

(1) Excluding balconies and terraces

While every attempt has been made to ensure accuracy, all measurements are approximate, not to scale. This floor plan is for illustrative purposes only.

Calculations are based on RICS IPMS 3C standard.

Suite C - Floorplan



540 E UNION STREET, SUITE C
540 E Union St
West Chester, PA 19382

KAITIE O'GRADY
kaitie@swopelees.com
610.429.0200

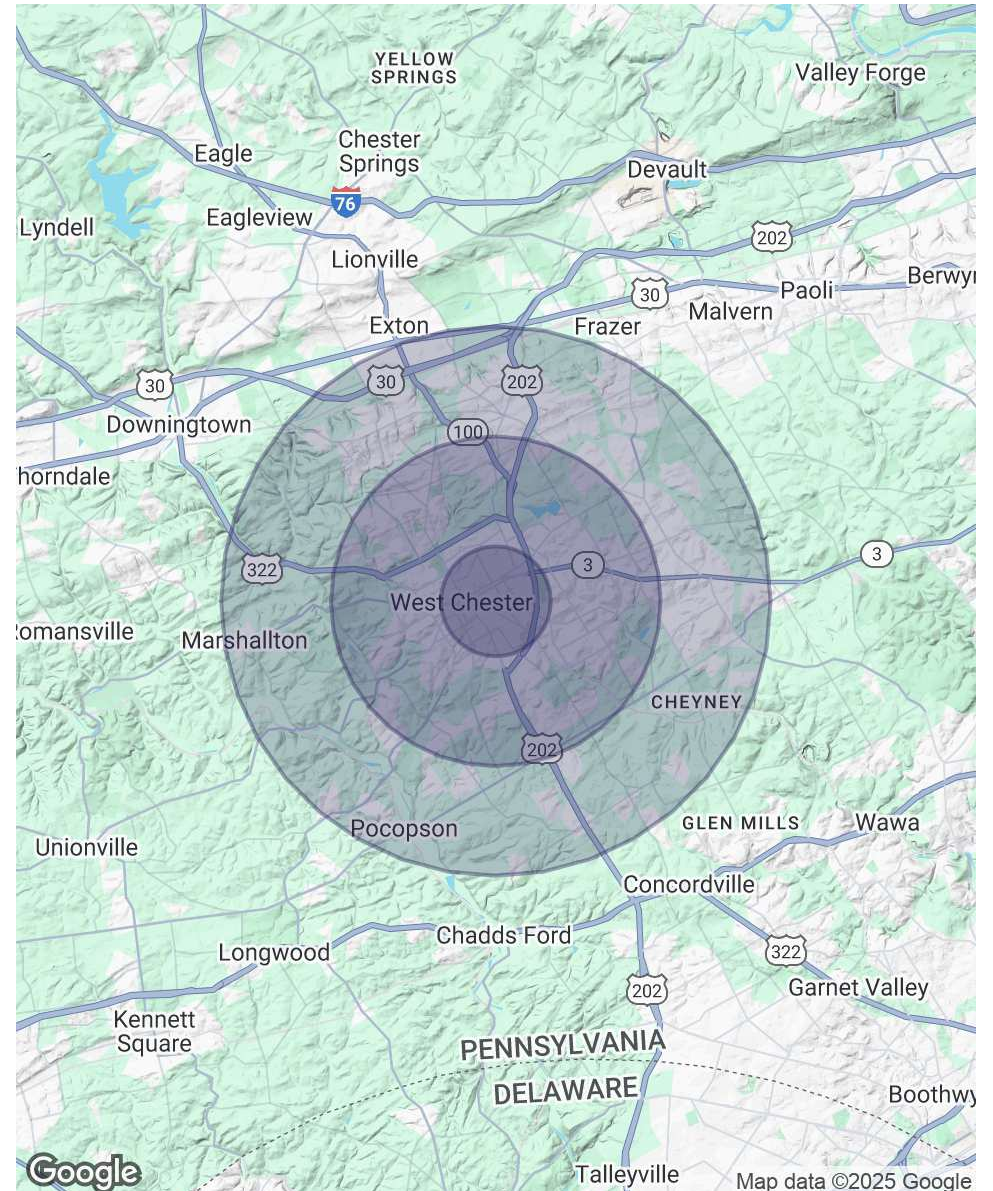
CHUCK SWOPE, CCIM
chuck@swopelees.com
610.429.0200 x101



POPULATION	1 MILE	3 MILES	5 MILES
Total Population	19,040	61,978	119,472
Average Age	33	39	41
Average Age (Male)	33	38	40
Average Age (Female)	34	40	42

HOUSEHOLDS & INCOME	1 MILE	3 MILES	5 MILES
Total Households	6,747	23,016	44,714
# of Persons per HH	2.8	2.7	2.7
Average HH Income	\$142,883	\$158,702	\$174,614
Average House Value	\$486,226	\$557,345	\$591,701

Demographics data derived from AlphaMap





540 E UNION STREET, SUITE C
540 E Union St
West Chester, PA 19382

KAITIE O'GRADY
kaitie@swopelees.com
610.429.0200

CHUCK SWOPE, CCIM
chuck@swopelees.com
610.429.0200 x101



KAITIE O'GRADY

Sales Associate

kaitie@swopelees.com

Direct: **610.429.0200** | Cell: **484.630.5017**

PA #RS376804

PROFESSIONAL BACKGROUND

I am dedicated to helping businesses find the perfect location to thrive. Serving Chester County and the surrounding areas, I bring a fresh perspective, strong market knowledge, and a commitment to client success. Whether you're looking to lease, buy, or invest, I'm here to guide you every step of the way. Let's build your business together!

EDUCATION

Colibri Real Estate

Swope Lees Commercial Real Estate
208 East Market Street
West Chester, PA 19382
610.429.0200



540 E UNION STREET, SUITE C
540 E Union St
West Chester, PA 19382

KAITIE O'GRADY
kaitie@swopelees.com
610.429.0200

CHUCK SWOPE, CCIM
chuck@swopelees.com
610.429.0200 x101



CHUCK SWOPE, CCIM

Broker of Record

chuck@swopelees.com

Direct: 610.429.0200 x101 | Cell: 610.804.7897

PA #RM 421301

PROFESSIONAL BACKGROUND

Chuck Swope, CCIM has been in the real estate industry for nearly 20 years, and over 16 years as a commercial real estate broker. Swope obtained his undergraduate degree from Washington College, Chestertown, MD and his graduate degree from the University of Pennsylvania, Philadelphia, PA. He enjoys spending time outdoors in the Chesapeake Bay region, traveling, exciting food and drinks, and collects rescue dogs.

EDUCATION

BA, Washington College, Chestertown, MD

MA, University of Pennsylvania, Philadelphia, PA

MEMBERSHIPS

CCIM

Swope Lees Commercial Real Estate
208 East Market Street
West Chester, PA 19382
610.429.0200