

NOW LEASING

Preferred
Real Estate Partners



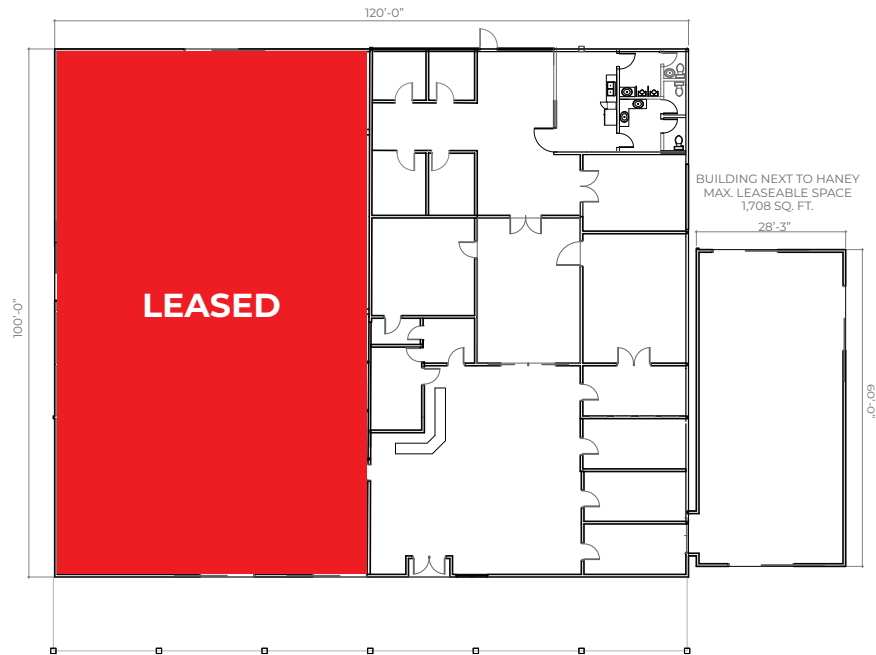
2614
WASHINGTON

Waller, TX 77484



FLOOR PLAN

HANEY MAIN BUILDING
MAX. LEASEABLE SPACE
12,000 SQ. FT.



LEASE INFORMATION

Type: NNN

Term: 36 months min.

SUITE	SIZE	DESCRIPTION
Suite A	LEASED	Build-out per request
Suite B	+/- 6,000 SF	As is
Suite C	+/- 1,708 SF	Build-out per request

DISCLAIMER: These numbers reflect what is currently available for lease and do not describe the total square footage



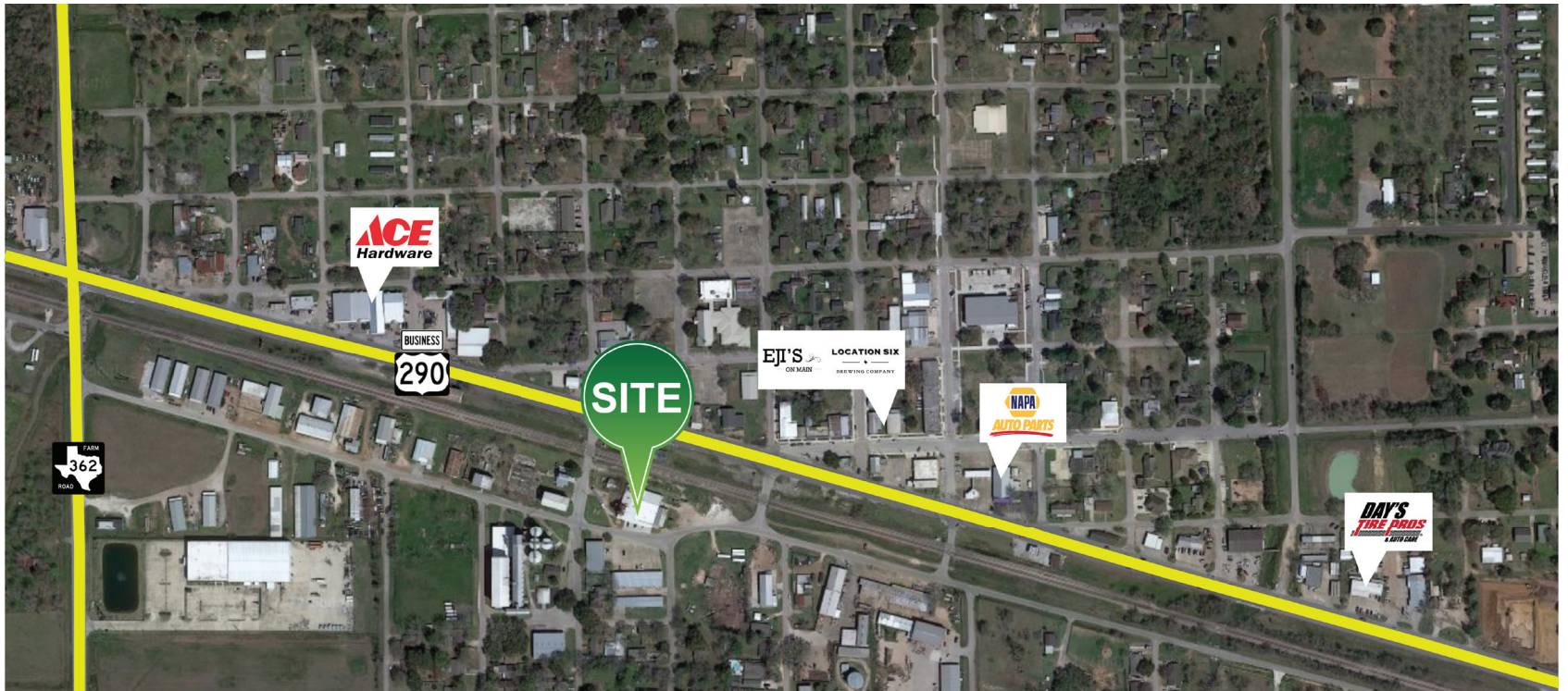
PROPERTY HIGHLIGHTS

Mixed use

Large breakroom with sink

Minutes from U.S. 290

OFFERING SUMMARY Call for pricing



CONTACT US

Head Office

31406 Farm to Market 2920 Suite B201,
Waller, TX 77484

936-213-9481

Moreinfo@Preferred-Realty.com

Inquiries

For any inquiries, questions
or recommendations,
please call: 936-231-9481