

# PARK HILL COMMONS SHOPPING CENTER

9010 - 9060 W. 159 TH STREET  
ORLAND PARK, ILL 60462

LOT AREA -- 189,144 S. F.

SHOPPING CENTER GROSS SQUARE FOOTAGE -- 30,156 S. F.

MANHATTAN DEVELOPMENT GROUP  
7555 NORTH KEELER AVENUE  
SKOKIE, ILLINOIS 60076

PARK HILL COMMONS  
9010 - 9060 WEST 159 TH STREET  
ORLAND PARK, ILLINOIS 60462

PREPARED BY:  
JOHN CYETKOVSKI  
TEL. 630-660-4176

ISSUED FOR REVIEW 5/23/17

S. 1

## ON SITE PARKING

REGULAR PARKING STALLS:

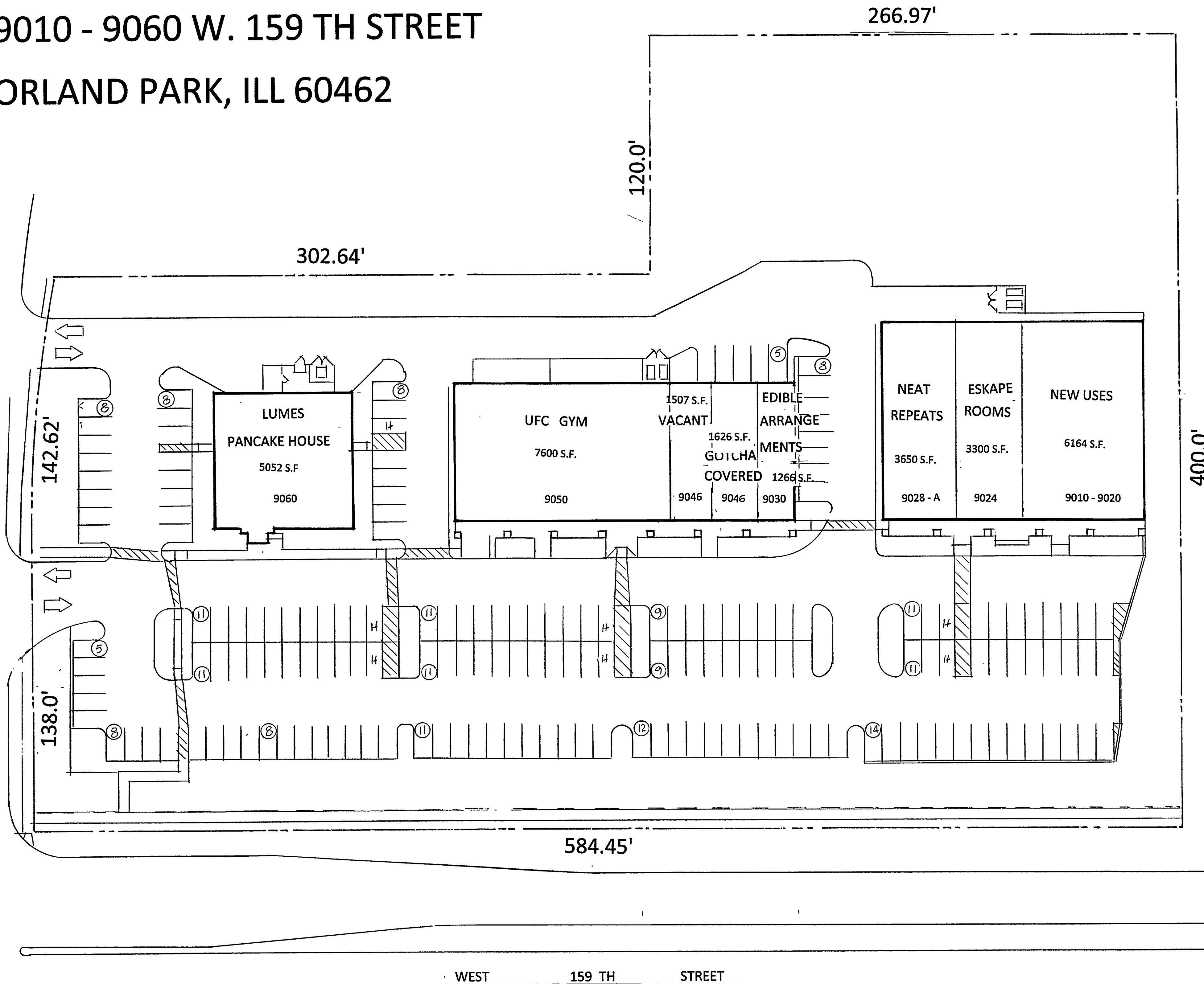
172 STALLS

HANDICAPPED PARKING:

7 STALLS

## LIST OF TENANTS:

ADDRESS:	TENANT:	FOOTAGE:
9010 - 9020	NEW USES	6164 S. F.
9024	ESKAPE ROOMS	3300 S. F.
9028	NEAT REPEATS	3650 S. F.
9030	EDIBLE ARRANGEMENTS	1266 S. F.
9046	VACANT	1507 S. F.
9044	GOTCHA COVERED	1626 S. F.
9050	UFC GYM	7600 S. F.
9060	LUMES RESTAURANT	5052 S. F.
	<b>TOTAL</b>	<b>30165 S. F.</b>



## SITE PLAN

SCALE: 1"=30'-0"