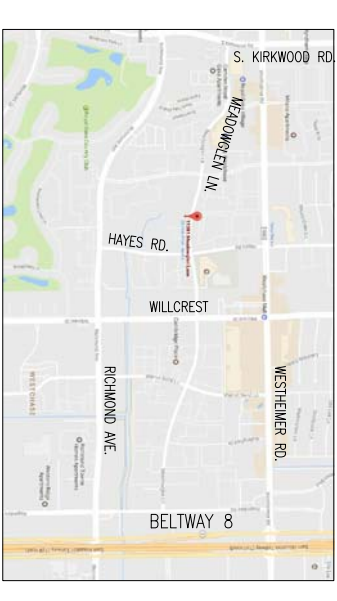
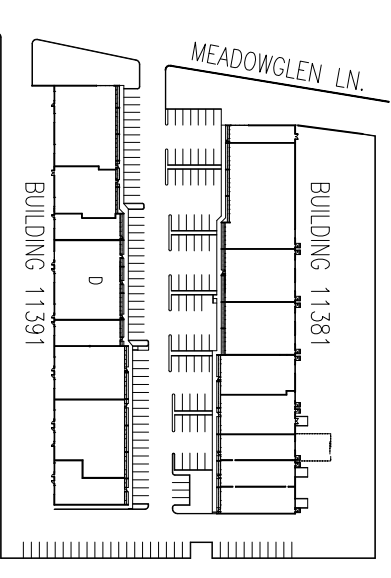


MEADOWGLEN BUSINESS PARK
11391 MEADOWGLEN LN, SUITE D
HOUSTON TEXAS 77082

MAP 



SITE PLAN 

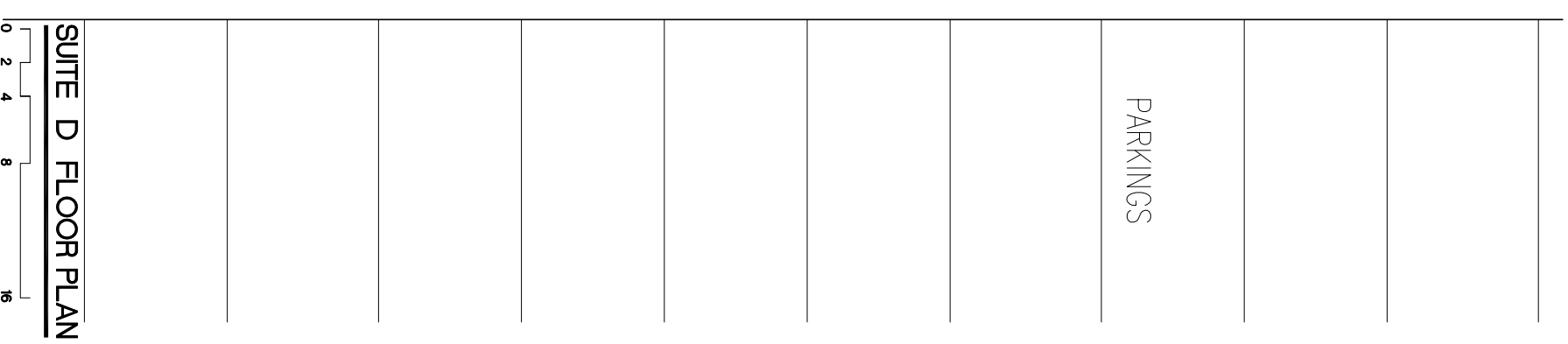
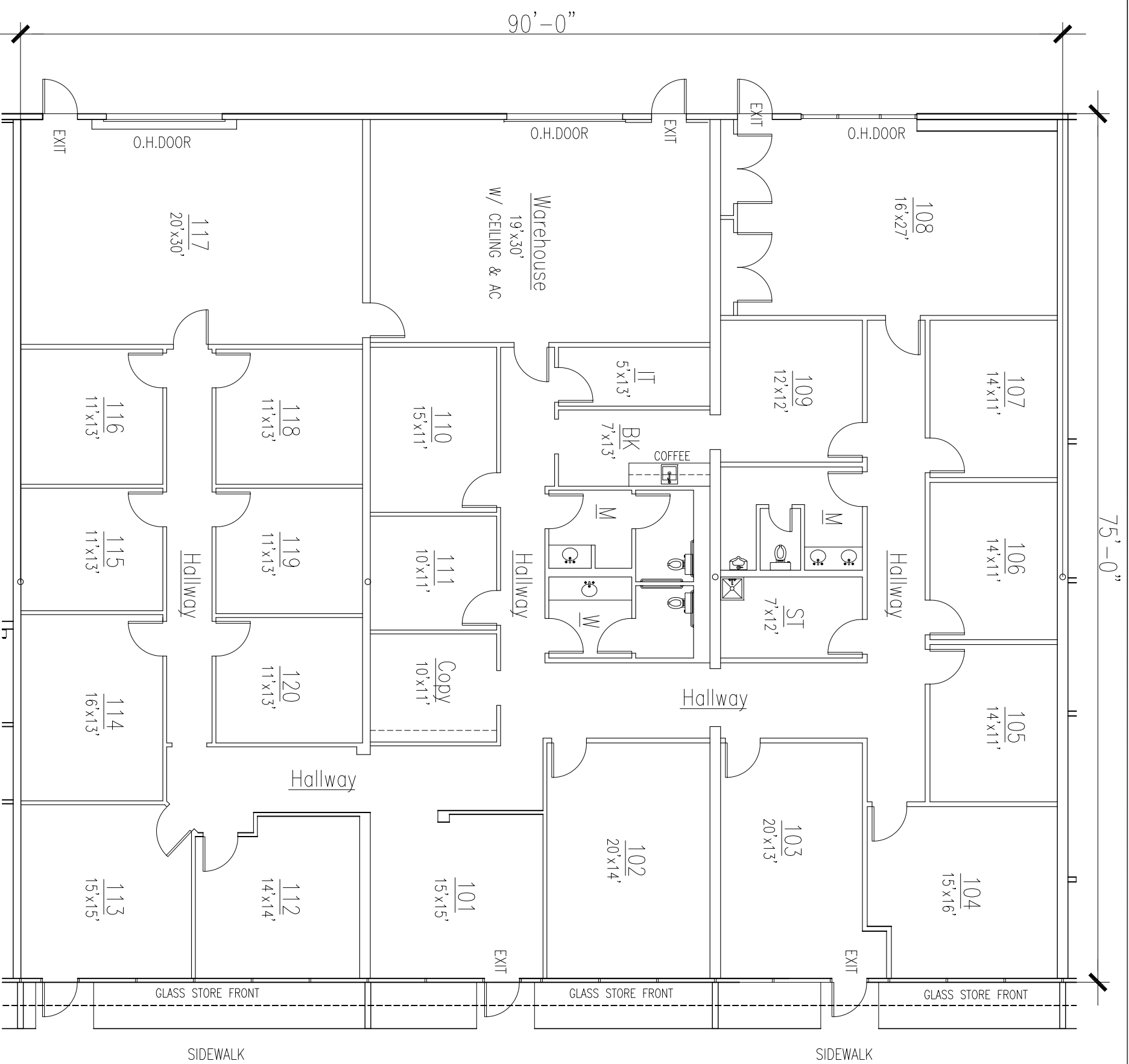


BUILDING SUMMARY

OFFICE AREA: 6,180 SQ. FT.
 WAREHOUSE : 570 SQ. FT.
 TOTAL AREA: 6,750 SQ. FT.

BUILDING FEATURES

MASTER PLANNED BUSINESS PARK
 CONCRETE TILT WALL CONSTRUCTION
 GRADE LEVEL REAR LOADING DOORS
 14' AVERAGE CLEAR HEIGHT
 ALL CONCRETE PAVING



SUITE D FLOOR PLAN

0 2 4 8 16



These listings are offered subject to error, omission, prior lease, or withdrawal without notice.