

2170 Whitesville Road - GA 219

LaGrange, GA

COMCRE.COM



AVAILABLE FOR SALE

\$950,000

±12.75 Acres ± 350' Frontage

Highlights

- Across From Entrance to Great Wolf Lodge
- GW expects 400k to 500K Visitors Per Year
- 35,000 VPD Along I-85 & 13,400 along 219
- Near entrance to LaGrange Technology Park
Over 8,500 Employees
- Sentury Tire Building \$500 Million Plant with
1,000 Employees Opening Late 2018

For more information or to schedule a tour, please contact:

Craig Melton

Broker

706.298.0202 Office

334.559.4914 Cell

comprehensivecre@gmail.com



COMMERCIAL REAL ESTATE BROKERAGE

102 Main Street, Suite 201

LaGrange, GA 30240

Office 706.298.0202

Cell 334.559.4914

comprehensivecre@gmail.com

2170 Whitesville Road - GA 219

LaGrange, GA

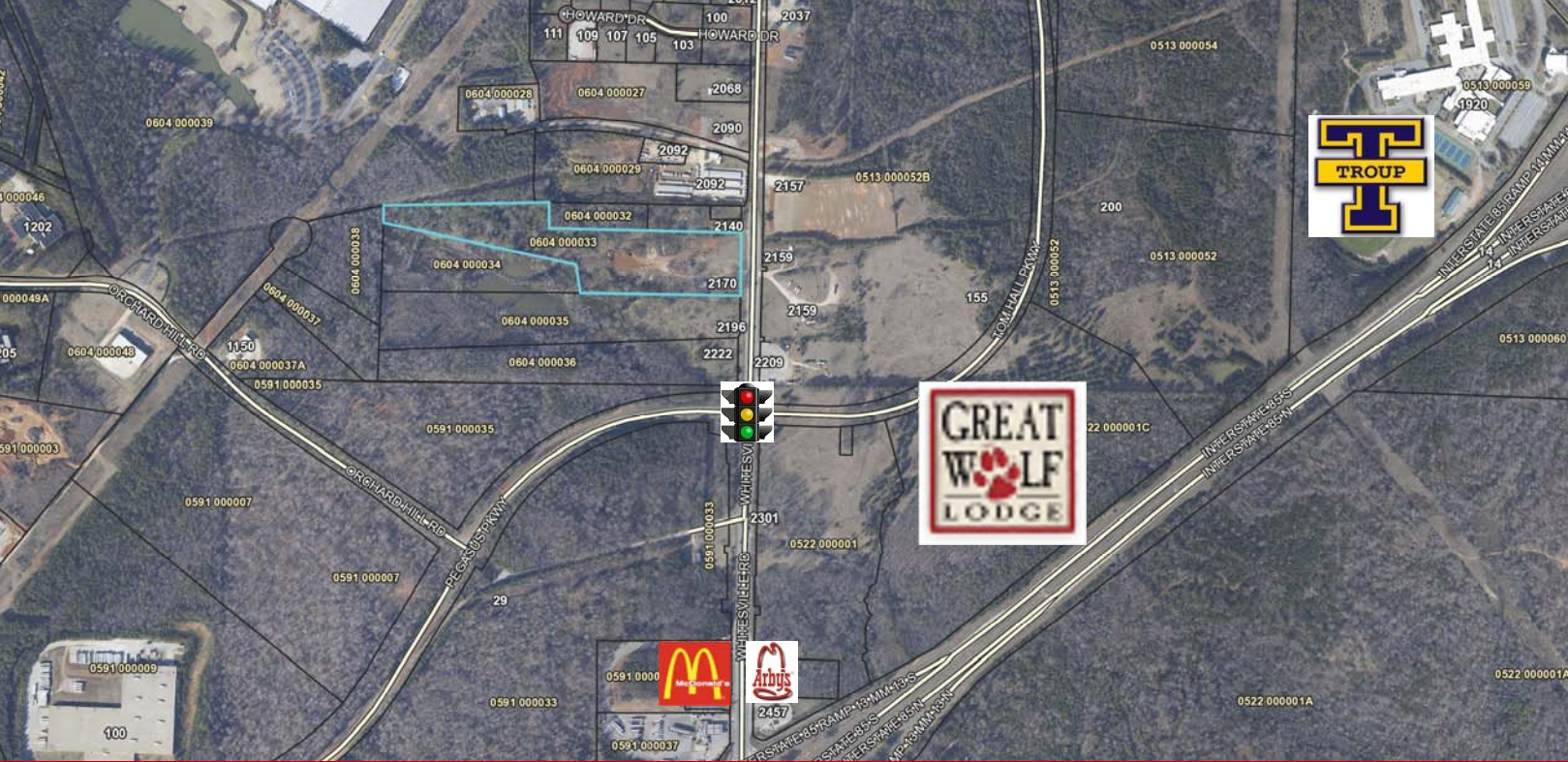
COMCRE.COM



2170 Whitesville Road - GA 219

LaGrange, GA

COMCRE.COM



2170 Whitesville Road - GA 219

LaGrange, GA

COMCRE.COM

