



# FOR LEASE 21 ROSZEL ROAD PRINCETON, NEW JERSEY

3,667 SF FIRST FLOOR  
CORNER SUITE

## BUILDING HIGHLIGHTS

- ▶ BUILT IN 2015
- ▶ PROMINENT MAIN LOBBY VISIBILITY
- ▶ EXTENSIVE WINDOW LINE
- ▶ COLUMN-FREE FLOORPLATES
- ▶ BACK-UP GENERATOR AVAILABLE
- ▶ FITNESS CENTER



**PRINCETON  
PROPERTY  
PARTNERS**

Where you want to be.



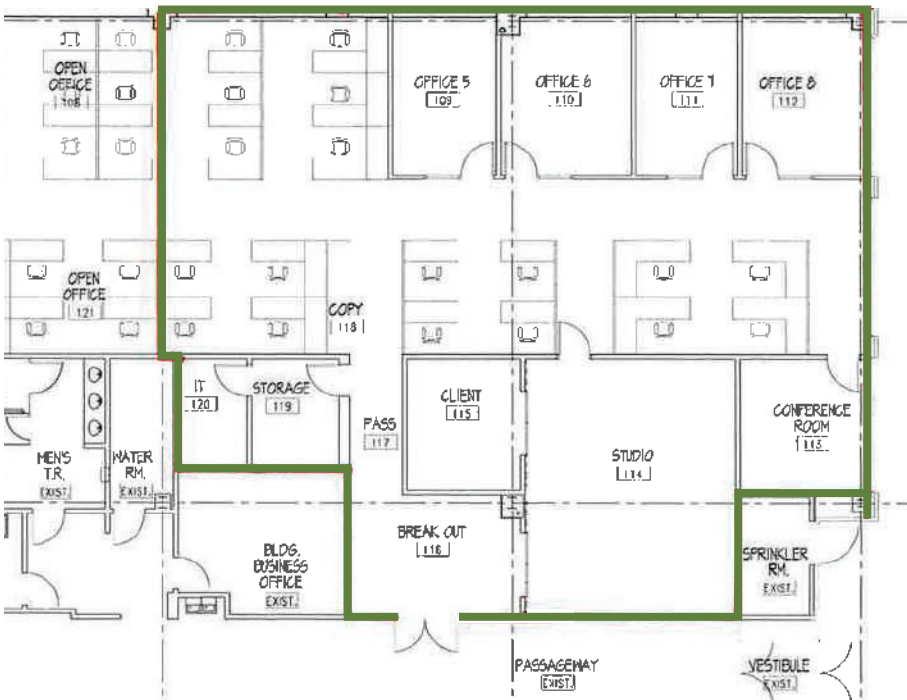


# 21 ROSZEL ROAD PRINCETON, NEW JERSEY

*MOST PRESTIGIOUS ADDRESS IN THE MARKET*

## BUILDING HIGHLIGHTS

- ▶ "GRAB & GO CAFE" ON-SITE
- ▶ QUICK ACCESS TO ROUTE 1 AND DOWNTOWN PRINCETON RESTAURANTS
- ▶ 1.5 MILES TO PRINCETON JUNCTION TRAIN STATION
- ▶ WALKING DISTANCE TO HYATT REGENCY HOTEL - CARNEGIE CENTER
- ▶ EASY ACCESS TO PRINCETON MARKET FAIR



**PRINCETON  
PROPERTY  
PARTNERS**

Where you want to be.

SAB RUSSO  
email: [srusso@merceroak.com](mailto:srusso@merceroak.com)  
office: 609.452.0200  
cell: 609.472.0039

200 PRINCETONSOUTH CORPORATE CENTER | SUITE 100 | EWING, NJ | 08628 | 609.452.0200 | [MERCEROAK.COM](http://MERCEROAK.COM)

No warranty or representation, expressed or implied, is made as to the accuracy of the information contained herein, and same is submitted subject to errors, omissions, change of price, sale or other conditions and withdrawal without notice.