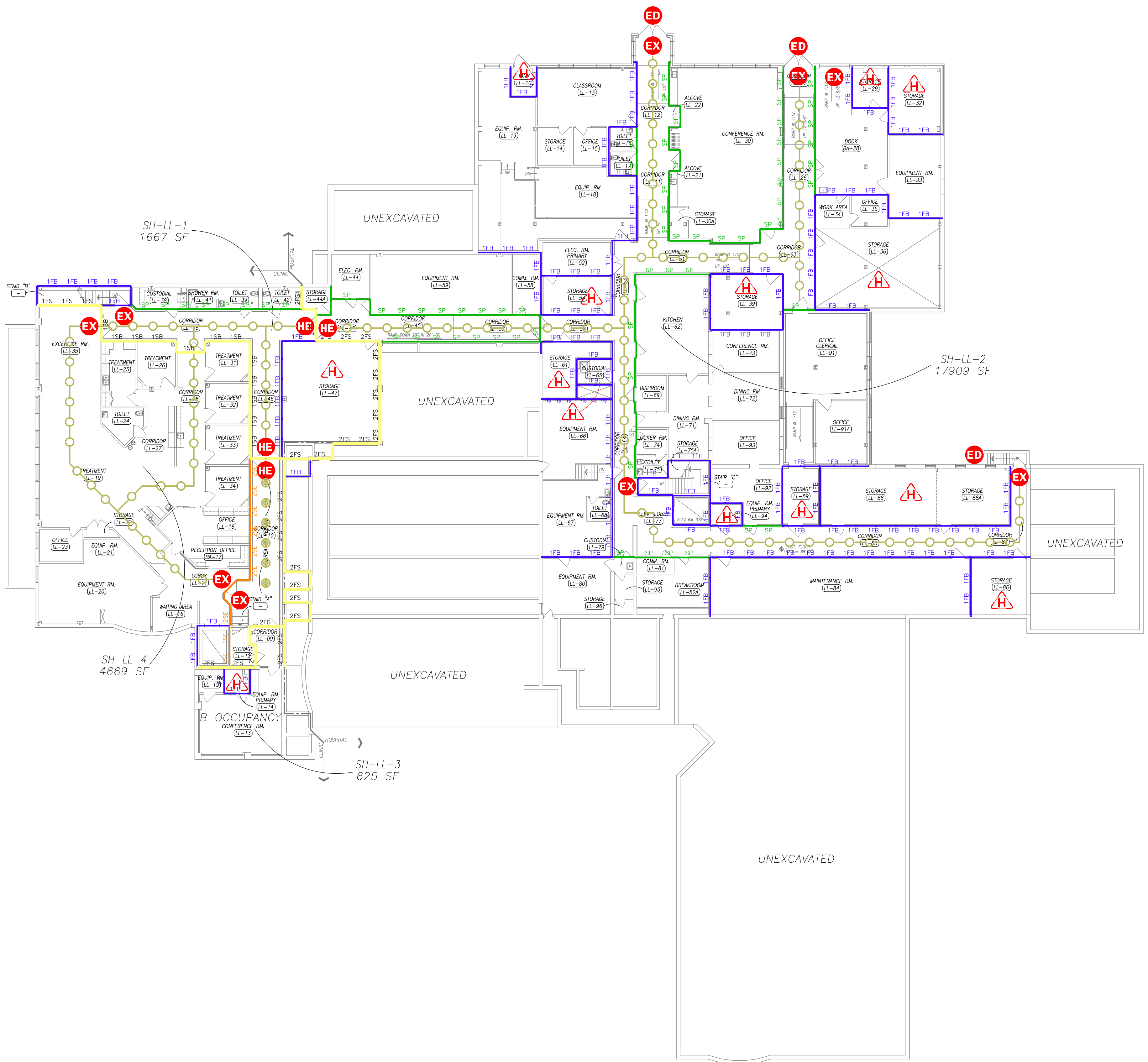


GENERAL NOTES

1. PROVIDE FIRESTOPPING AT ALL (EXISTING AND NEW) PENETRATIONS AS REQUIRED TO MAINTAIN FIRE RATINGS AS PER MAYO CLINIC STANDARD SPECIFICATIONS.
2. SALVAGE ANY BARCODE TAGS FOUND ON DOOR FRAMES BEING REMOVED OR RELOCATED. FORWARD TAGS TO MAYO CLINIC FACILITIES OPERATIONS.
3. "OUT" INDICATES FURNITURE ITEMS TO BE RETURNED TO OWNER'S STOCK.

THIS IS NOT THE CORRECT FILE FOR USE IN YOUR PROJECT DRAWINGS. COPY THE BLOCK NAMED "ILS" LOCATED WITHIN THE DRAWING FILE:  
L:\CAD\template\SCHEDULES.dwg  
ONTO YOUR LIFE SAFETY PROJECT DRAWING.



**BUILDING CODE, OCCUPANCY AND EGRESS INFORMATION**  
**SPRINGFIELD MEDICAL CENTER - LOWER LEVEL**

PER 2015 MINNESOTA STATE BUILDING CODE (2012 IBC)  
PER 2015 MINNESOTA CONSERVATION CODE - EXISTING BUILDINGS (2012 IEBC)

MIXED OCCUPANCY:	HEIGHT INFORMATION	AREA CALCULATIONS	
		ALLOWED	ACTUAL
INSTITUTIONAL I-2 BUSINESS GROUP MECHANICAL	STORIES	2	2
	BASIC AREA (LOWER LEVEL)	15,000	24,931 SF
TYPE OF CONSTRUCTION II-A, FULLY SPRINKLERED	INCREASE FOR FRONTAGE	7,500	-
	INCREASE FOR SPRINKLERS	30,000	-
	SPRINKLER INCREASE	-	24,931 SF
	TOTAL	157,500	64,145 SF

COMPARTMENT ZONE	COMPARTMENT OCCUPANCY (TABLE 1004.1.2)	COMPARTMENT AREA (SQ.FT.)	SQ.FTG.PER OCCUPANT (TABLE 1004.1.2)	OCCUPANT LOAD	EXIT INCHES REQUIRED		INCHES PROVIDED	
					VERTICAL	HORIZONTAL	VERTICAL	HORIZONTAL
SH-LL-1	TREATMENT AREA	1,667	240	7	4 x 0.3 = 1.2	4 x 0.2 = 0.8	33	33
SH-LL-2	MECHANICAL AREA	17,909	300	60	30 x 0.3 = 9.0	30 x 0.2 = 6.0	27	33
SH-LL-3	BUSINESS AREA	625	100	7	0 x 0.3 = 0.0	7 x 0.2 = 1.4	0	33
SH-LL-4	TREATMENT AREA	4,669	240	20	10 x 0.3 = 3.0	10 x 0.2 = 2.0	0	0
<b>LOWER LEVEL TOTALS</b>				<b>94</b>	<b>13.2</b>	<b>10.2</b>	<b>60</b>	<b>99</b>
						<b>TOTAL EXIT INCHES PROVIDED</b>		<b>159</b>

**FIRE RESISTIVE LEGEND**

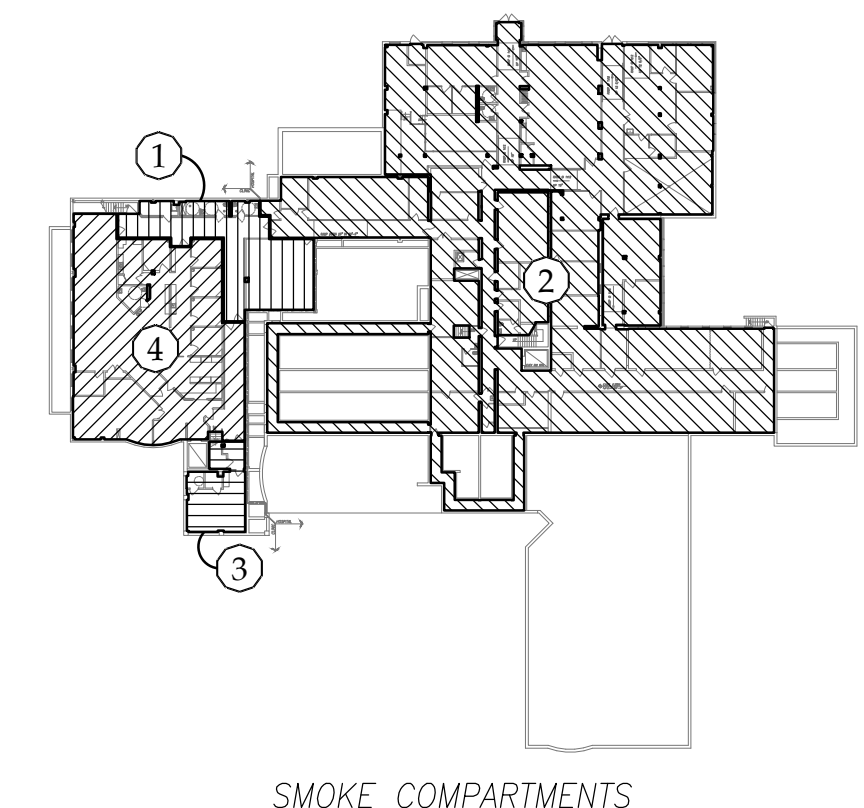
1 HOUR (FIRE) CEILING ASSEMBLY	60 MINUTE
2 HOUR (FIRE) CEILING ASSEMBLY	90 MINUTE
SMOKE TIGHT CEILING ASSEMBLY	N/A
SP SMOKE PARTITION	NON-RATED
SPC SMOKE PARTITION	NON-RATED W/CLOSER
1FB 1 HOUR FIRE BARRIER	45 MINUTE W/CLOSER
2FB 2 HOUR FIRE BARRIER	90 MINUTE W/CLOSER
1SE 1 HOUR SHAFT ENCLOSURE	60 MINUTE W/CLOSER
2SE 2 HOUR SHAFT ENCLOSURE	90 MINUTE W/CLOSER
1SB 1 HOUR SMOKE BARRIER	20 MINUTE W/CLOSER
1FS 1 HOUR FIRE/SMOKE BARRIER	45 MINUTE W/CLOSER
2FS 2 HOUR FIRE/SMOKE BARRIER	90 MINUTE W/CLOSER
3FW 3 HOUR FIRE WALL	180 MINUTE W/CLOSER
4FW 4 HOUR FIRE WALL	180 MINUTE W/CLOSER
CBM BULKHEAD MEMBRANE TO EXTEND FROM CEILING ASSEMBLY UP TO DECK	N/A
1BR 1 HOUR RATED BULKHEAD EXTENDING FROM RATED CEILING UP TO DECK	60 MINUTE
DFR DOORS OR SHUTTERS FIRE AND/OR SMOKE RATED (FS) WITH EMERGENCY EGRESS	PER WALL RATING
OS OCCUPANCY SEPARATION	MATCH WALL RATING OPENING PROTECTION

**MEANS OF EGRESS**

EA EXIT ACCESS	EXIT ACCESS CORRIDOR
EX EXIT	EXIT PASSAGEWAY
ED EXIT DISCHARGE	
HE HORIZONTAL EXIT	

**ADDITIONAL SYMBOLS**

HAZARDOUS AREA
1234 SUITE SQUARE FOOTAGE
SUITE BOUNDARY



**Life Safety**  
**Springfield Medical Center**  
**Lower Floor**  
**Mayo Clinic Health System**  
**Springfield Minnesota**

REVISION	DATE
DATE	DEC 17
SCALE	1/16" = 1'-0"
DRAWN	XXX
PROJECT NUMBER	XXXXX

**LIFE SAFETY PLAN**