

218 Peachtree Street

218 Peachtree Street | Atlanta | GA | 30303

Prime Restaurant/Retail Opportunity in Downtown Atlanta

Property Overview

218 Peachtree Street is a prime downtown Atlanta location with approximately 20,000 SF restaurant/retail space on Peachtree Street.

The project is located at the northwest corner of Peachtree St. and Andrew Young International Blvd. in the heart of Atlanta's Central Business District near Peachtree Center Marta Station.



Coro Realty Advisors, LLC.
400 Northcreek, Suite 100
3715 Northside Parkway
Atlanta, GA 30327
Phone: 404.846.4000
Website: www.cororealty.com

Demographic Info	1 mile	3 mile	5 mile
Population	23,151	153,558	313,339
Households	10,468	76,882	149,635
Average Household Income	\$74,853	\$86,390	\$88,510

Leasing Contact: **Andrea Kenney**
(404)846-4018
akenney@cororealty.com

CORO
REALTY ADVISORS, LLC

218 Peachtree Street

218 Peachtree Street | Atlanta | GA | 30303

Area Information

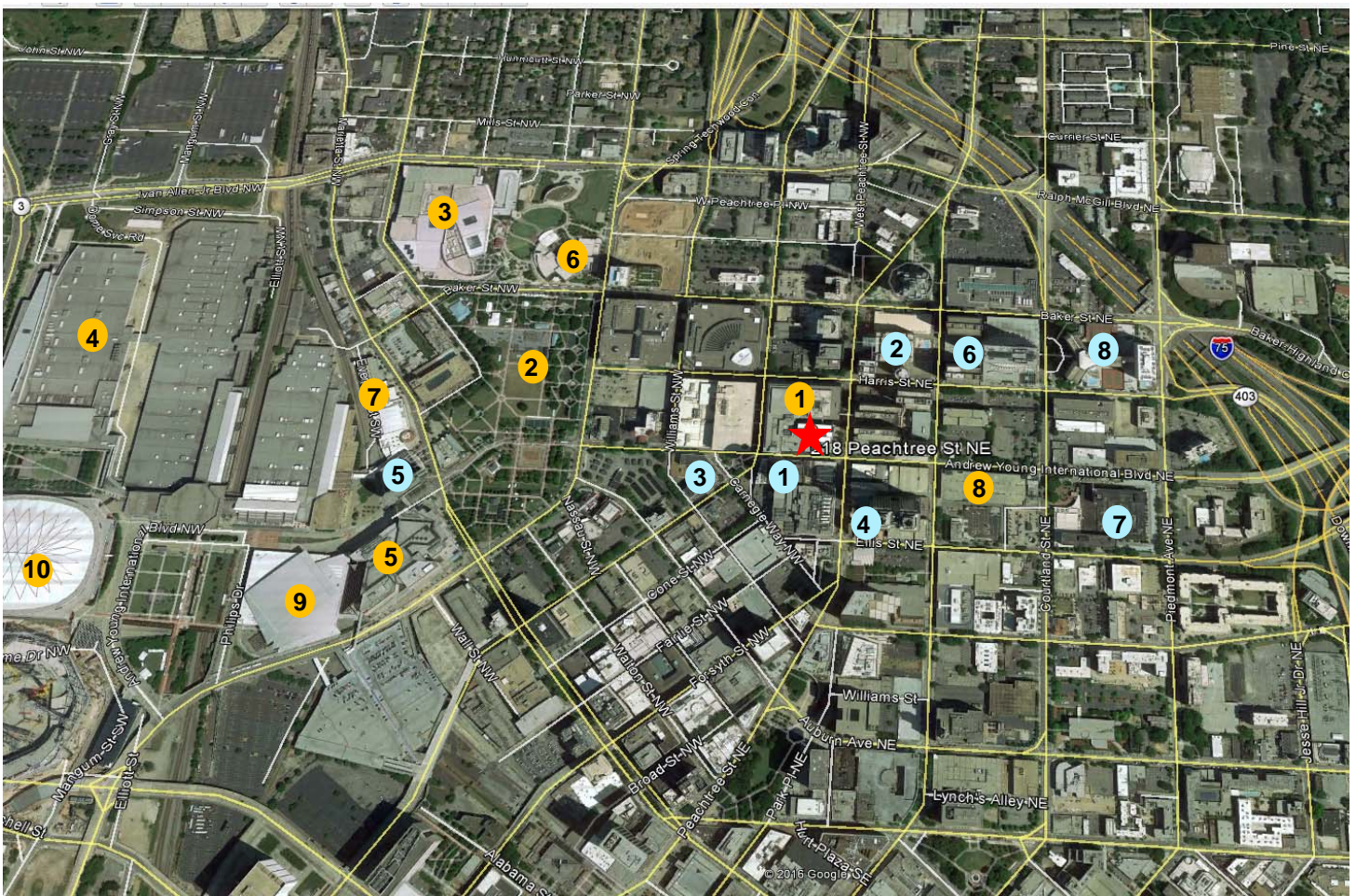
218 Peachtree is located in the heart of Downtown in Atlanta's central business district (CBD), the largest of the city's three commercial districts. Downtown Atlanta is home to approximately 25,376 residents and a daytime population of over 215,000.

Attractions:

- | | |
|--|----------------------------------|
| 1. AmericasMart Atlanta — adjacent to site | 6. World of Coca Cola |
| 2. Centennial Olympic Park | 7. College Football Hall of Fame |
| 3. Georgia Aquarium | 8. Peachtree Center |
| 4. World Congress Center | 9. Philips Arena |
| 5. CNN Center | 10. Georgia Dome |

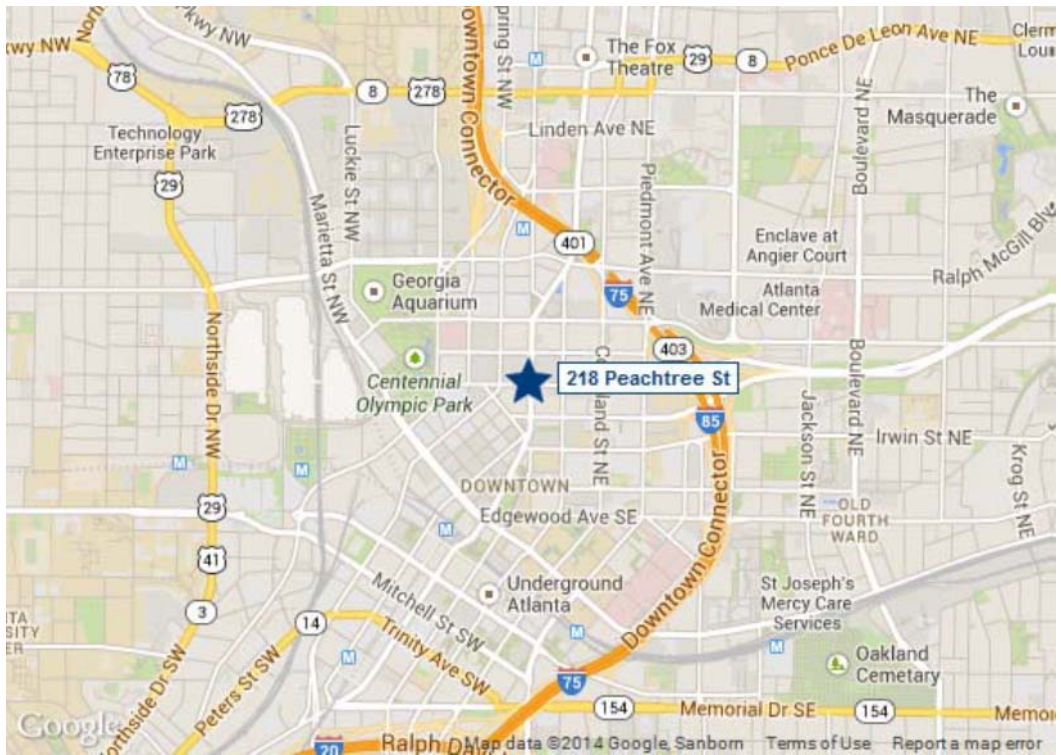
Hotels:

- | | |
|-------------------------|---------------------|
| 1. The Westin | 6. Marriott Marquis |
| 2. Hyatt Regency | 7. Sheraton |
| 3. DoubleTree by Hilton | 8. Hilton Atlanta |
| 4. Ritz-Carlton | |

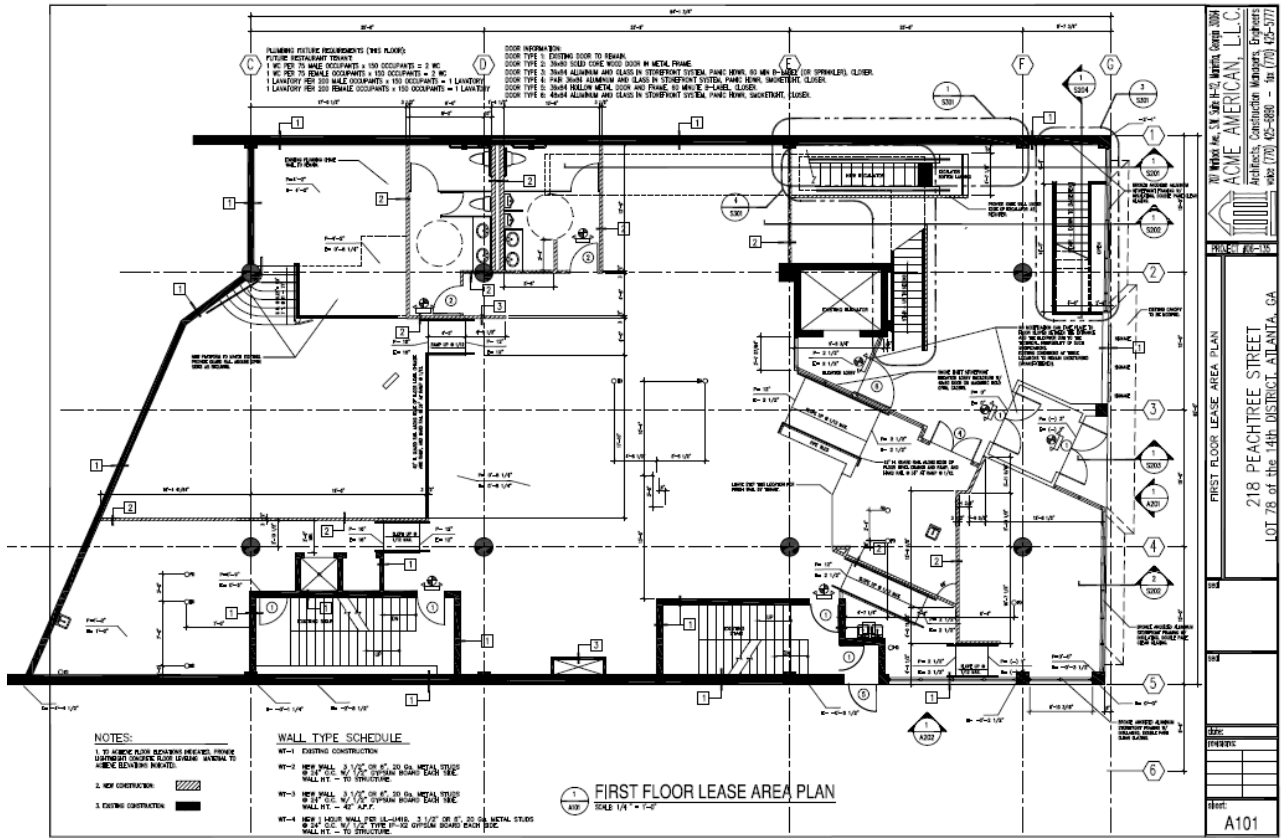


218 Peachtree Street

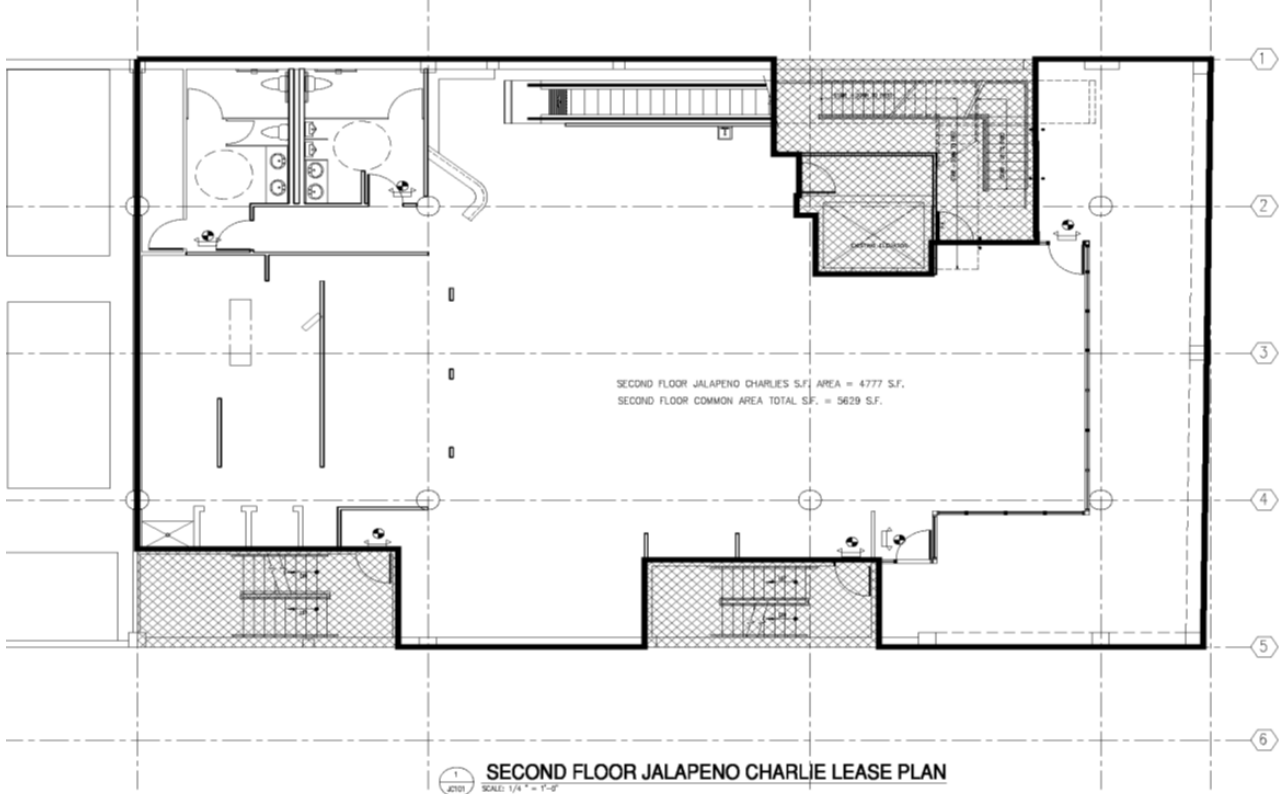
218 Peachtree Street | Atlanta | GA | 30303



First Floor—Approximately 6,080 Square Feet



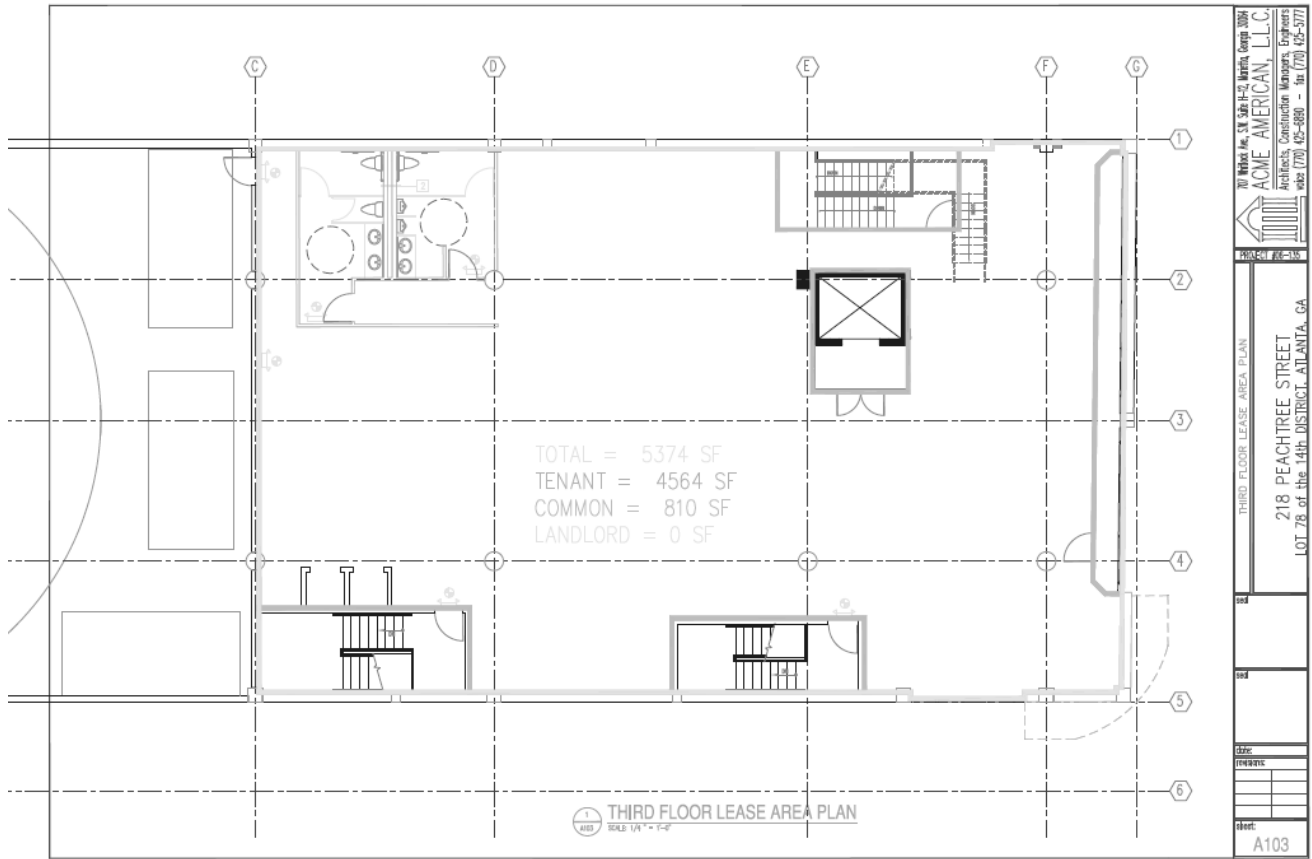
Second Floor—Approximately 4,680 Square Feet



218 Peachtree Street

218 Peachtree Street | Atlanta | GA | 30303

Third Floor—Approximately 5,320 Square Feet



Basement Floor—Approximately 8,325 Square Feet

