

FINISH NOTES:

- ALL ROOMS AND AREAS UNLESS OTHERWISE NOTED.
- CEILING & GRID-- NEW 2'x4' TEGULAR SECOND LOOK TILE IN NEW GRID.
 - LIGHTING-- NEW 2'x4' 18 DEEP CELL 3 TUBE PARABOLIC LIGHT FIXTURES. INSTALL NEW EXIT & EMERGENCY LIGHTING.
 - FLOORING-- NEW 280Z PATTERN LOOP CARPET W/VCB.
 - WALLS-- PAINT ALL WALLS FLAT LATEX PAINT COLOR TO BE BY TENANT.
 - WINDOW BLINDS-- INSTALL NEW 1" HORIZONTAL MINI WINDOW BLINDS ON ALL EXTERIOR WINDOWS.
 - HVAC-- NEW HVAC AS REQUIRED FROM EXISTING UNIT. BALANCE SYSTEM AT END OF CONSTRUCTION.

SPECIAL EXCEPTIONS:

- KITCHENETTE-- INSTALL NEW PLASTIC LAMINATE BASE AND WALL CABINETS & SINK. REFRIGERATOR TO BE BY TENANT. VOT ON FLOOR IN LEU OF CARPET.
- WAITING & RECEPTION-- 3 COLOR CARPET PATTERN. VMC ON WALLS BELOW WOOD CHAIR RAIL @ 4.3'-0" A.F.F. TO ADDITIONAL HIGH HAT LIGHT FIXTURES. P. LAM. RECEPTION DESK & BACK OFFICE COUNTER & SHELF.
- MECHANICAL--
- INSTALL 1-240V 20A DEDICATED CIRCUIT TO TREATMENT ROOM EXACT LOCATION T.B.D. BY TENANT.
- INSTALL WATER SUB METER WITH REMOTE READER. READER LOCATION T.B.D. BY LANDLORD.
- INSTALL ELECTRIC PANEL & EMON DION METER DEDICATED TO TENANT'S SPACE. WIRE ROOF TOP HVAC TO TENANT PANEL.

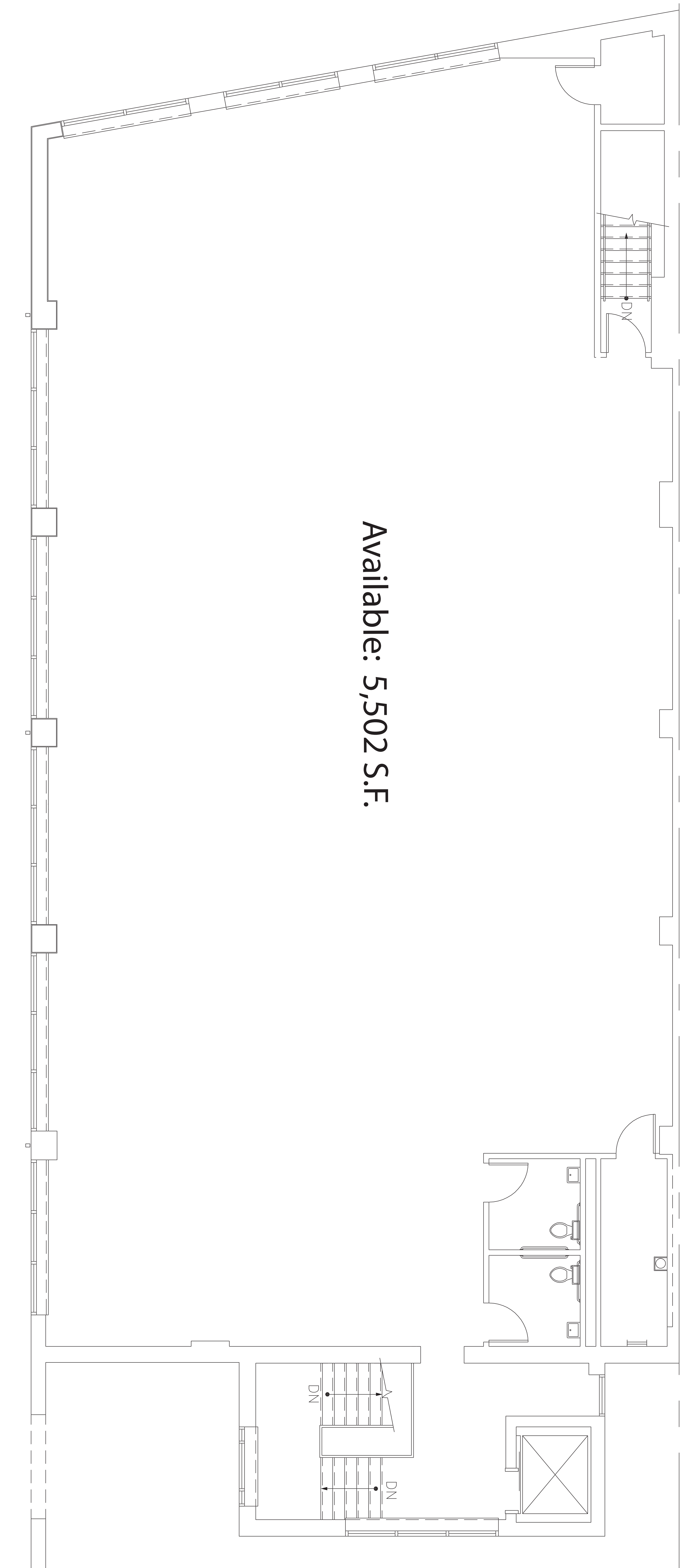
WALL LEGEND:

- EXISTING WALL TO REMAIN
- NEW STANDARD PARTITION WALL - INSULATED AT OFFICE AND TRAINING ROOMS
- NEW FULL HEIGHT INSULATED PARTITION WALL TIGHT TO UNDERSIDE OF DECK.

SYMBOLS:

- EXIT SIGN
- BATTERY PACK EMERGENCY LIGHT
- REMOTE HEAD
- FIRE EXTINGUISHER

Available: 5,502 S.F.



SCALE: 1/4" = 1'-0"

PROPOSED NEW OFFICE FOR:

AT 850 LANCASTER AVE. MAIN LINE BOARD OF REALTORS
LOWER MERION TOWNSHIP, BRYN MAWR, PA

JULY 9, 2004

