



**FACTORY
DISTRICT**

439 WEST 127TH STREET WEST HARLEM, NYC
WHERE UPTOWN MEETS
DOWNTOWN AND EAST MEETS WEST

 DouglasElliman



WHERE OLD MEETS NEW: THE FACTORY DISTRICT

439 WEST 127TH STREET offers authentic, dramatic elements designed to house New York's next great concept.

FEATURE HIGHLIGHTS

- Four-story former gallery with soaring vertical space
- Approximately 20,000 SF across four floors
- Rear private courtyard access – ideal for café, product garden, or outdoor activation
- Full building presence + direct street access
- Historic exposed brick, steel, and natural light throughout



Positioned within Harlem's dynamic Factory District, 439 West 127th offers brand operators a canvas to create at scale.

Surrounding tenants include:

- The George at Columbia, Tapestry Collection by Hilton
- Mink Padel (Harlem's first padel court)
- The Malt House Harlem
- The Mink Building
- HB2; Harlem Biospace
- Columbia University's Manhattanville Campus
- The Taystee Building
- City College of New York

FLOOR PLANS

- Ground Floor + Floors 2–4: Flexible, open layout ideal for flagship vision.
- Efficient core for circulation and vertical branding moments.



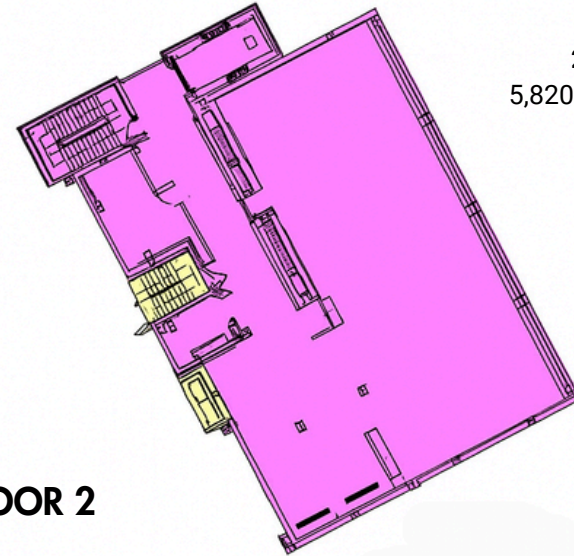
GROUND

102
4,193 Mkt RSF



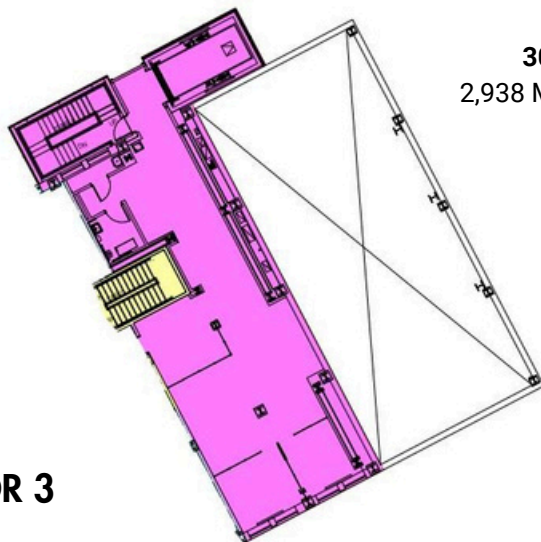
FLOOR 2

202
5,820 Mkt RSF



FLOOR 3

302
2,938 Mkt RSF



FLOOR 4

402
5,820 Mkt RSF



THE CENTER OF THE



INNOVATION TRIANGLE



TRANSPORTATION



- ONE-STOP TO MIDTOWN
- Minutes from Midtown via the #1, A, B, C, D trains.



- Excellent access via the West Side Highway.





CONTACT US:

WILLIAM ETHERIDGE

Associate Real Estate Broker
william.etheridge@elliman.com
M: 646.837.2641
O: 212.776.4362
@william_eth4

MCKENZIE RYAN

Associate Real Estate Broker
Sports & Entertainment Division

Office of McKenzie Ryan
mckenzie.ryan@elliman.com
M: 917.858.1828
@mckenzie_ryan

**FACTORY
DISTRICT**