



Epiphany Lutheran Church

Yu Ming Charter School San Leandro Campus

(Not a Part)



Wombat Wonderschool



Townes Sandra



MacArthur Fwy



MacArthur Fwy

FOR SALE

Hard Corner High Visibility Retail Site
16290 Foothill Blvd @ Ridgehaven
San Leandro, CA

Retail Mixed Use
Development
Opportunity

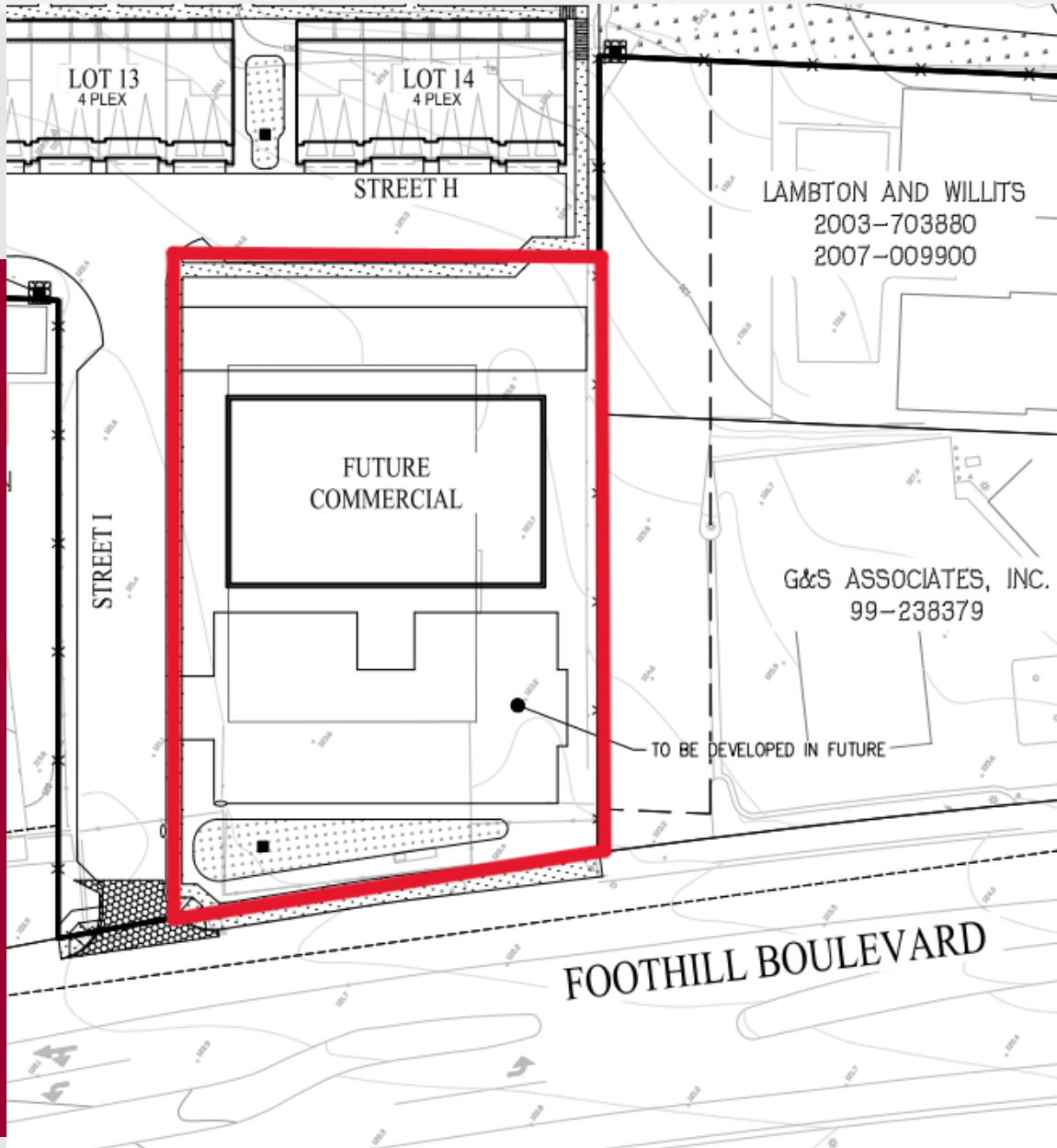
CONTACT

DAVID A KLEIN
Esq. SIOR LEED AP MCR

242 CALIFORNIA ST.
SAN FRANCISCO, CA 94111

E: DKLEIN@LEE-ASSOCIATES.COM
C: 415-828-2188

LOCAL EXPERTISE. INTERNATIONAL REACH. WORLD CLASS



PROPERTY HIGHLIGHTS

APN: 80A-188-2-7

31,057 SF Land (.71 acres)

- Flat, regular dimensioned parcel
- San Lorenzo Unified School District
- Clean Phase I (no further action)
- Tentative map permits 6,000 SF Building

SITE CHARACTERISTICS

Zoned PD - Planned development

Easy on-off I-580

Demographics (1 Mile)

- Households: 10,324
- Population: 29,140
- Median Age: 39
- Culturally diverse
- Median household income: \$85,510
- Foothill Blvd traffic count:
 - I-580: 162,469 cars per day
 - Foothill Blvd: 20,782 cars per day

← 126 FT of Frontage on Foothill Blvd →

Price: Submit Offer



COMMERCIAL REAL ESTATE SERVICES

Local Expertise. International Reach. World Class.

Lee & Associates, the largest broker-owned firm in North America, has been providing seamless, consistent execution and value-driven market-to-market services for our clients since 1979.

Our real estate services are tailored to exceed the needs of our local, national, and international clients by combining the latest technology, resources, and market intelligence with over 40 years of expertise to optimize results.

David A. Klein Esq. SIOR LEED AP MCR
Executive Vice President | Managing Principal
415.516.2211
dklein@lee-associates.com
License ID# 00790730

Lee & Associates
San Francisco
Corporate ID# 01191898
A Member of the Lee & Associates
Group of Companies
242 California St
San Francisco, CA 94111
www.lee-associates.com

No warranty or representation is made to the accuracy of the foregoing information. Terms of sale or lease and availability are subject to change or withdrawal without notice.
CID#01191898

