

# EAST LAUDERDALE WAREHOUSES

4760-4875 NE 12 AVE, OAKLAND PARK, FL 33334

## PROPERTY SUMMARY

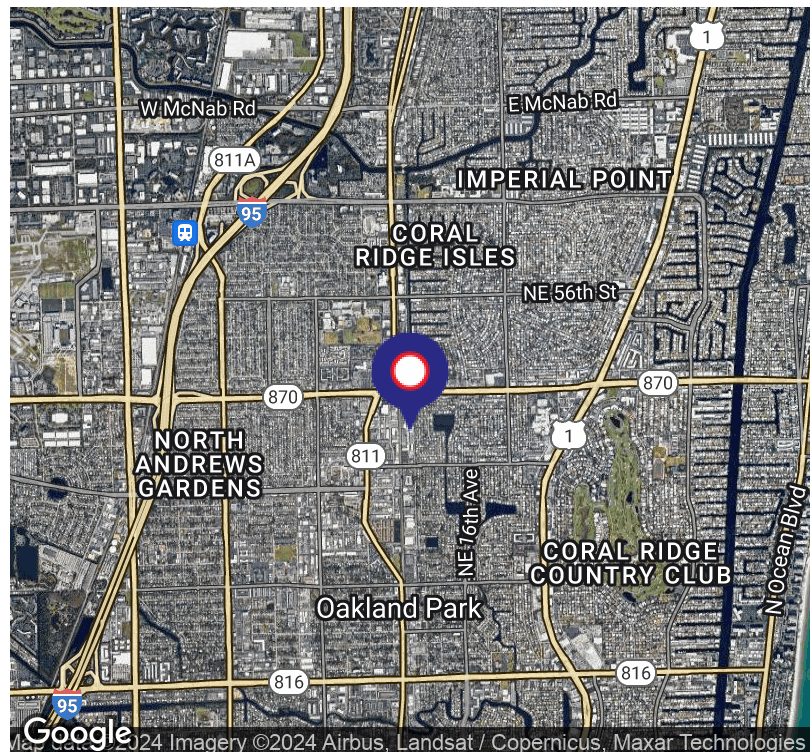


### PROPERTY DESCRIPTION

The East Lauderdale Warehouses are small bay warehouses in Oakland Park. Built in 1970, there are 6 buildings totaling 53,285 SF with 35 units ranging in size from 1,200 SF to 1,800 SF, with one storage bay at 775 SF. The small bay warehouses include a small, fully air-conditioned office and private restroom with a mix of 10' x 10' and 10' x 12' grade level overhead doors. This multi-tenant industrial property is ideally located to get anywhere in Broward County, as it is situated just east of Dixie Highway and south of Commercial Boulevard and less than 5 minutes from the I-95 Expressway, and is zoned B-3 for Commercial Industrial.

### PROPERTY HIGHLIGHTS

- 6 Building totaling 53,285 SF
- 35 units between 1,200 SF - 1,800 SF
- Fully air-conditioned offices
- 10' x 10' and 10' x 12' grade level overhead doors
- Less than 5 minutes from I-95 Expressway
- Zoned B-3 for Commercial Industrial



### HALEY PRESSER

Property Manager / Sales Associate  
Direct: 954.491.5505 | Cell: 954.254.5396  
Haley@levyrai.com

### JAN STOLOW

Director of Property Management and Leasing  
Direct: 954.491.5505 | Cell: 954.658.4479  
jan@levyrai.com



FOR LEASE

# EAST LAUDERDALE WAREHOUSES

4760-4875 NE 12 AVE, OAKLAND PARK, FL 33334

## ADDITIONAL PHOTOS



### HALEY PRESSER

Property Manager / Sales Associate  
Direct: 954.491.5505 | Cell: 954.254.5396  
Haley@levyrai.com

### JAN STOLOW

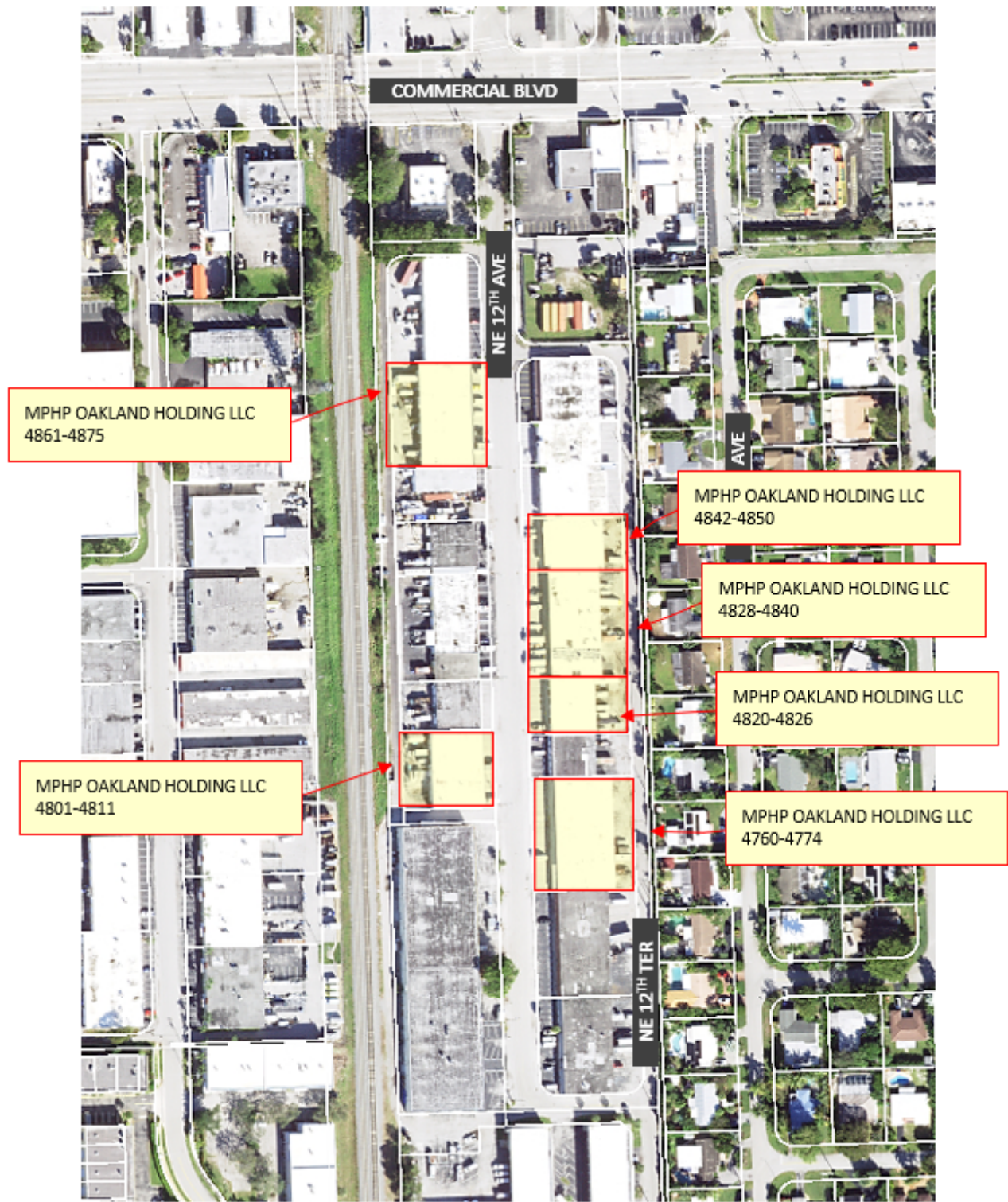
Director of Property Management and Leasing  
Direct: 954.491.5505 | Cell: 954.658.4479  
jan@levyrai.com



# EAST LAUDERDALE WAREHOUSES

4760-4875 NE 12 AVE, OAKLAND PARK, FL 33334

## SITE PLAN



### HALEY PRESSER

Property Manager / Sales Associate  
Direct: 954.491.5505 | Cell: 954.254.5396  
Haley@levyrai.com

### JAN STOLOW

Director of Property Management and Leasing  
Direct: 954.491.5505 | Cell: 954.658.4479  
jan@levyrai.com

