

**CAMERON PARK BUSINESS CENTER
600 S. PICKETT STREET
ALEXANDRIA, VIRGINIA**



Presented by:

**Kathy Coakley
Greenhill Realty Company
4901 Fairmont Avenue
Suite 200
Bethesda, Maryland 20814
Phone: 301-657-2525 ext. 17
Fax: 301-657-2555
E-mail: kcoakley@greenhillcompanies.com**

GREENHILL

MAP

AREA MAP



LEASING INFORMATION

AVAILABILITY

Space Available	Size (in s.f.)
612 S. Pickett Street	4,020
612-A S. Pickett Street	1,495
612-B S. Pickett Street	6,827

LEASING TERMS

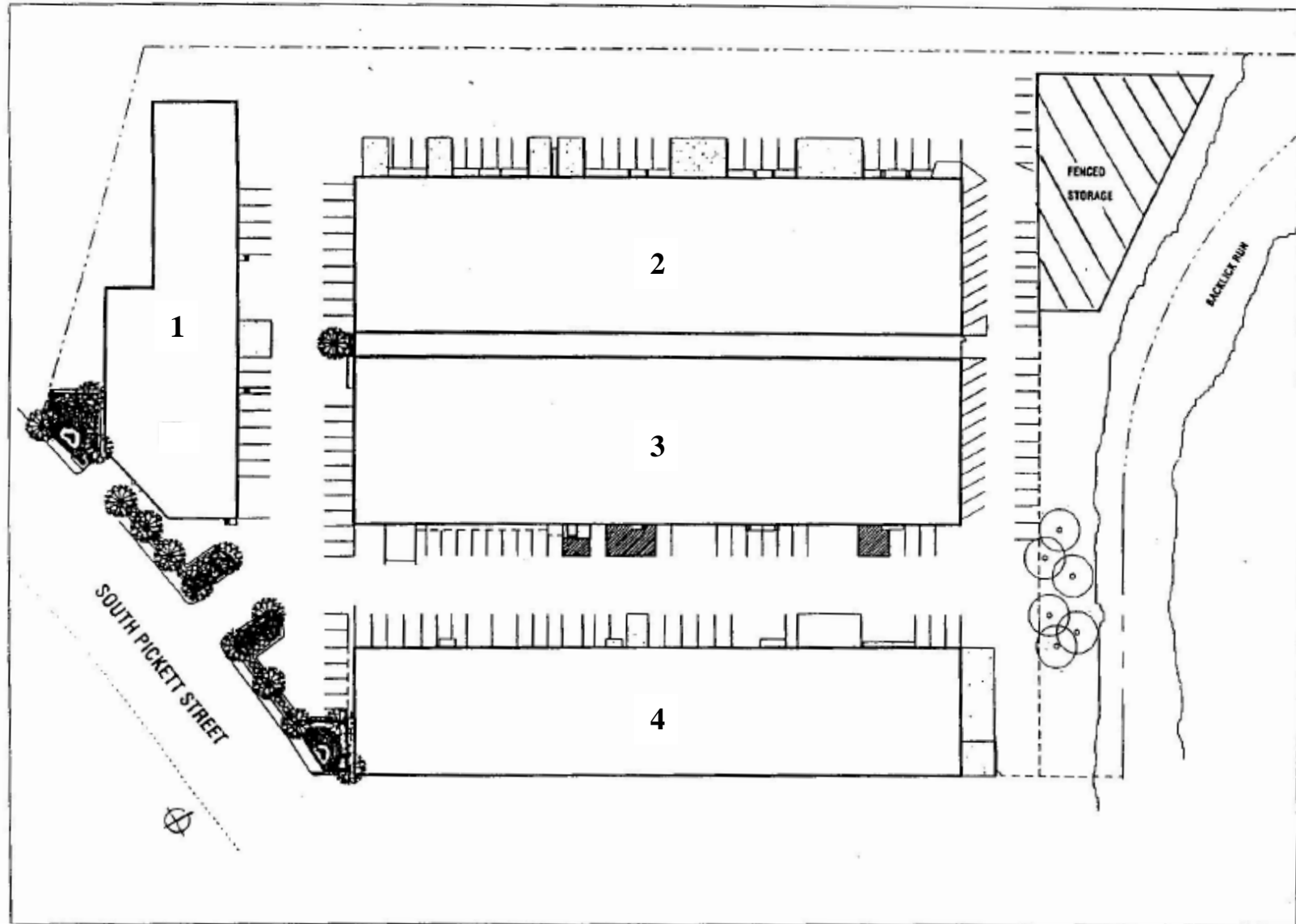
Rate:	\$12-\$16.25 per s.f., triple net, with three percent (3%) annual increases
Term:	Five (5) years, with options available
Lease Commencement:	Immediate
Rent Commencement:	Ninety (90) days following lease commencement
Exclusives:	None

GREENHILL

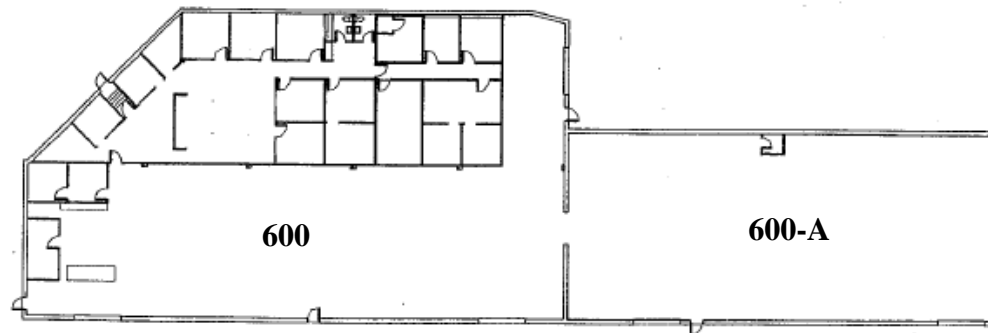
SITE PLAN

Cameron Park Industrial Center Alexandria, Virginia

SITE PLAN



FLOOR PLANS



Gensler and Associates Architects	Project	G.T.	Issues/Rev	Date	By	Drawing
		INDUSTRIAL PARK		5/23/91	BLA	RJK
1101 Seventeenth Street, N.W., Suite 903 Washington, D.C. 20036	Project No.	91043.02				
	Description	BUILDING I, FLOOR I				
		AS-BUILT DRAWING				

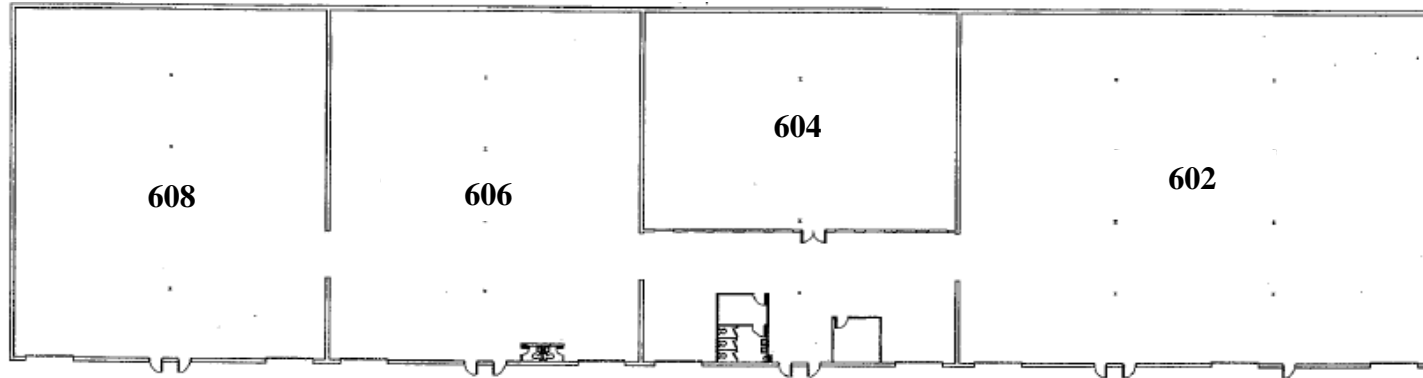
02 10-JUN-1991

202 887-5400

Drawings and written materials appearing herein constitute original unclassified work of the architect and may not be duplicated or disclosed without written consent of architect.



FLOOR PLANS



Gensler and Associates Architects		Project	G.T.	Issues/Rev	Date	By	Drawing
			INDUSTRIAL PARK		5/23/91	BLA	RJK
		Project No.	91043.02				
1101 Seventeenth Street, N.W., Suite 903 Washington, D.C. 20036		Description	BUILDING 2, FLOOR 1				
			AS-BUILT DRAWING				

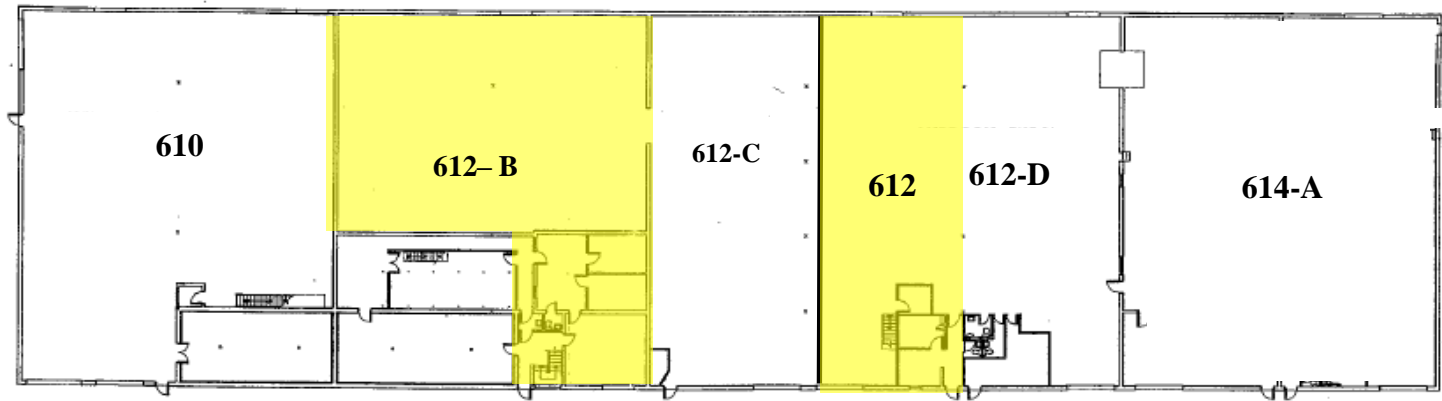
10-JUN-1991

202 887-5400

Drawings and written material appearing herein constitute contractual work of the architect and may not be reproduced or disclosed without written consent of architect.



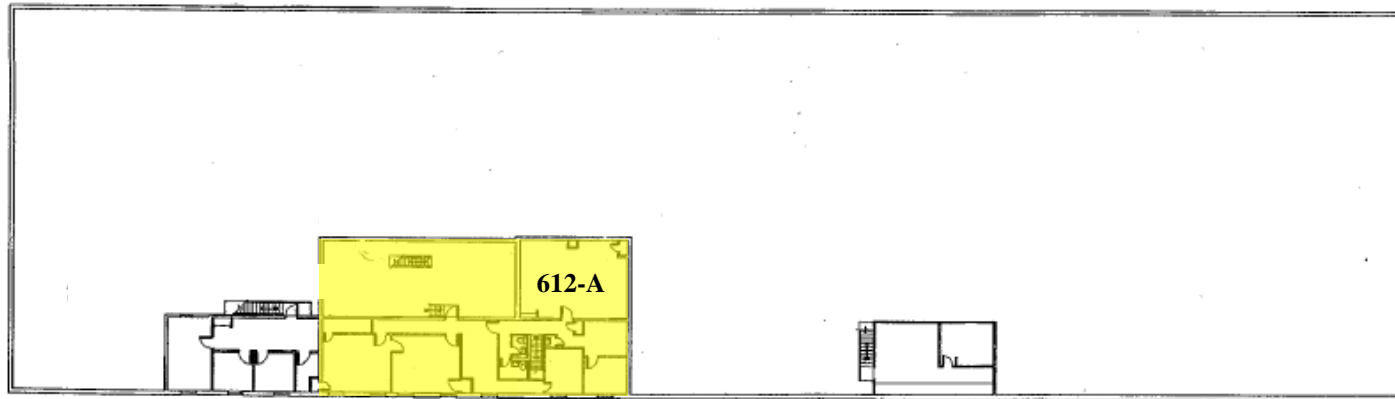
FLOOR PLANS



Gensler and Associates Architects		Project	G.T.	Issues/Rev	Date	By	Drawing
			INDUSTRIAL PARK		5/23/91	BLA	RJK
101 Seventeenth Street, N.W., Suite 903 Washington, D.C. 20036		Project No.	91043.02				
		Description	BUILDING 3, FLOOR 1				
			AS-BUILT DRAWING				
07-JUN-1991	9102 887_R.000	All drawings and written materials prepared herein constitute original and unpublished work of the architect and may not be reproduced or					



FLOOR PLANS



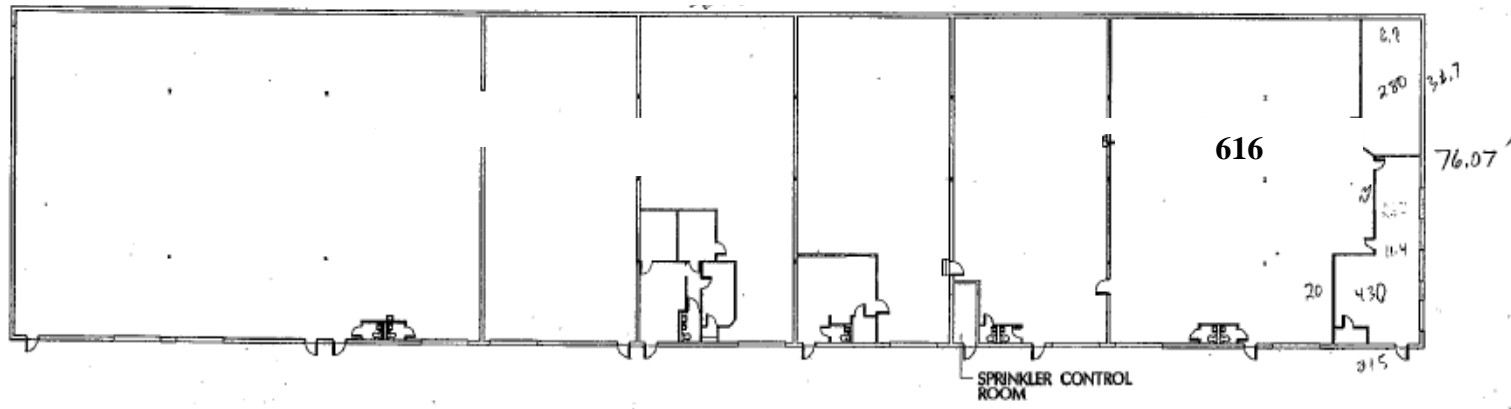
Gensler and Associates Architects		Project	G.T.	Issues/Rev	Date	By	Drawing
			INDUSTRIAL PARK		5/23/91	BLA	RJK
1101 Seventeenth Street, N.W., Suite 903 Washington, D.C. 20036		Project No.	91043.02				
		Description	BUILDING 3, FLOOR 2				
			AS-BUILT DRAWING				

91 07-JUN-1991

THIS DRAWING IS THE PROPERTY OF GENSLER AND ASSOCIATES ARCHITECTS. IT IS TO BE USED ONLY FOR THE PROJECT AND SITE SPECIFICALLY IDENTIFIED HEREON. IT IS NOT TO BE REPRODUCED OR COPIED IN ANY MANNER WITHOUT THE WRITTEN PERMISSION OF GENSLER AND ASSOCIATES ARCHITECTS.



FLOOR PLANS



Gensler and Associates Architects	Project	G.T.	Issues/Rev	Date	By	Drawing
		INDUSTRIAL PARK		5/23/91	BLA	RJK
1101 Seventeenth Street, N.W., Suite 903 Washington, D.C. 20036	Project No.	91043.02				
	Description	BUILDING 4, FLOOR 1				
		AS-BUILT DRAWING				

12 10-JUN-1991



All rights reserved. No part of this publication may be reproduced, stored in a retrieval system, or transmitted, in any form or by any means, electronic, mechanical, photocopying, recording, or by any information storage and retrieval system, without the prior written permission of the copyright owner.