





1349 Ring St | High Point, NC

Retail, QSR, or Convenience Store Opportunity - GL or BTS

HIGHLIGHTS

- Located at the signalized intersection of Jamestown Pkwy and Greensboro Rd.
- Full access into the site from the signal.
- Total of 6.45 Acres available, options can be flexible.
- 46,000 VPD on US Hwy 133 and 16,000 VPN on Greensboro Rd. No publicly available traffic counts have been performed on the new Jamestown Pkwy to date.

DEMOGRAPHICS

	1-Mile	3-Mile	5-Mile
 Population	6,209	56,133	131,150
 Households	2,462	21,102	51,757
 Avg HH Income	\$62,695	\$68,471	\$77,900
 Employees	2,222	35,205	74,187



Tre Vaughn | Tre@BellCommercial.net | 336.429.0089

High Level Aerial

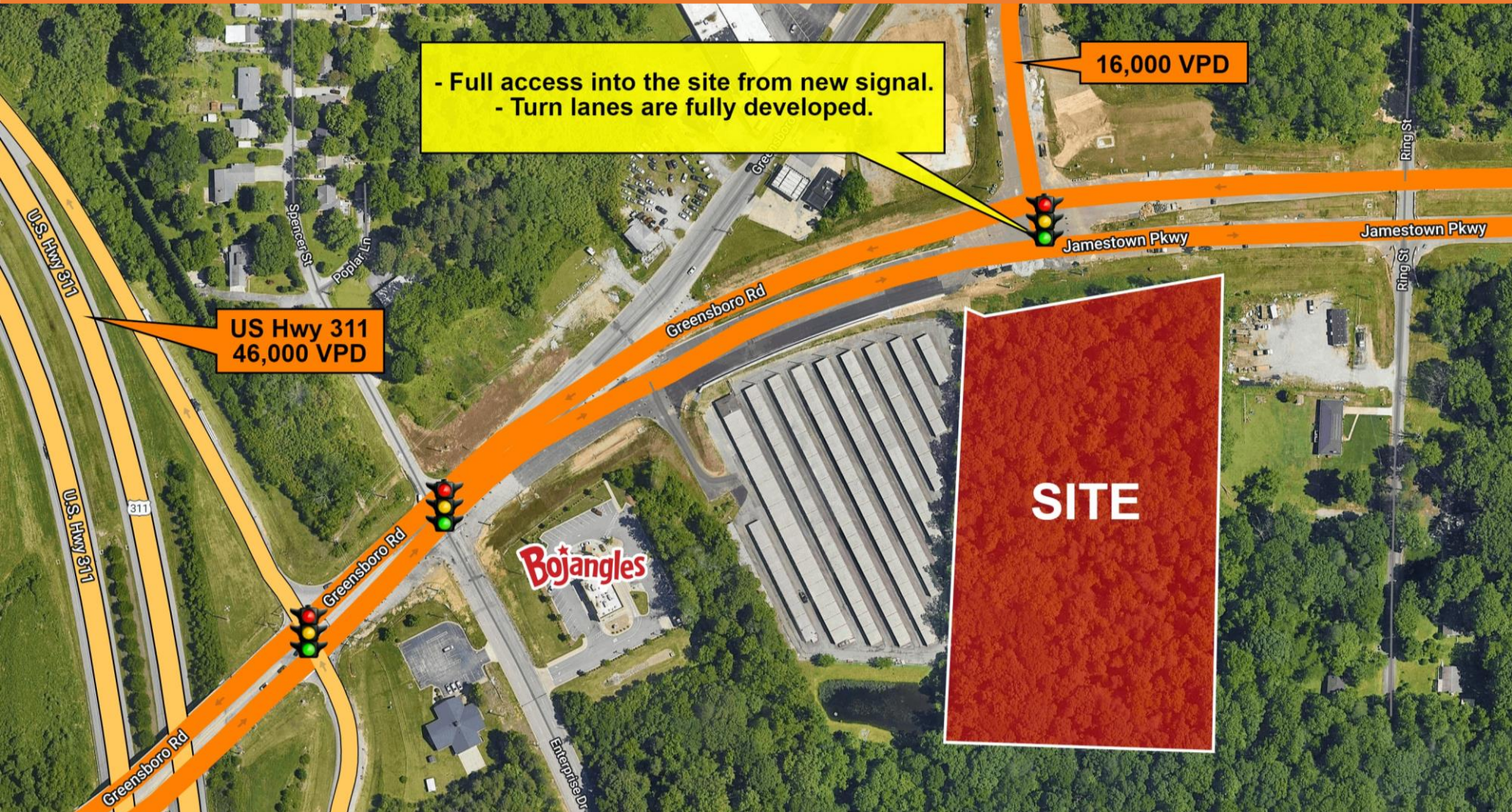
1349 Ring St. | High Point, NC



Tre Vaughn | Tre@BellCommercial.net | 336.429.0089

Low Level Aerial

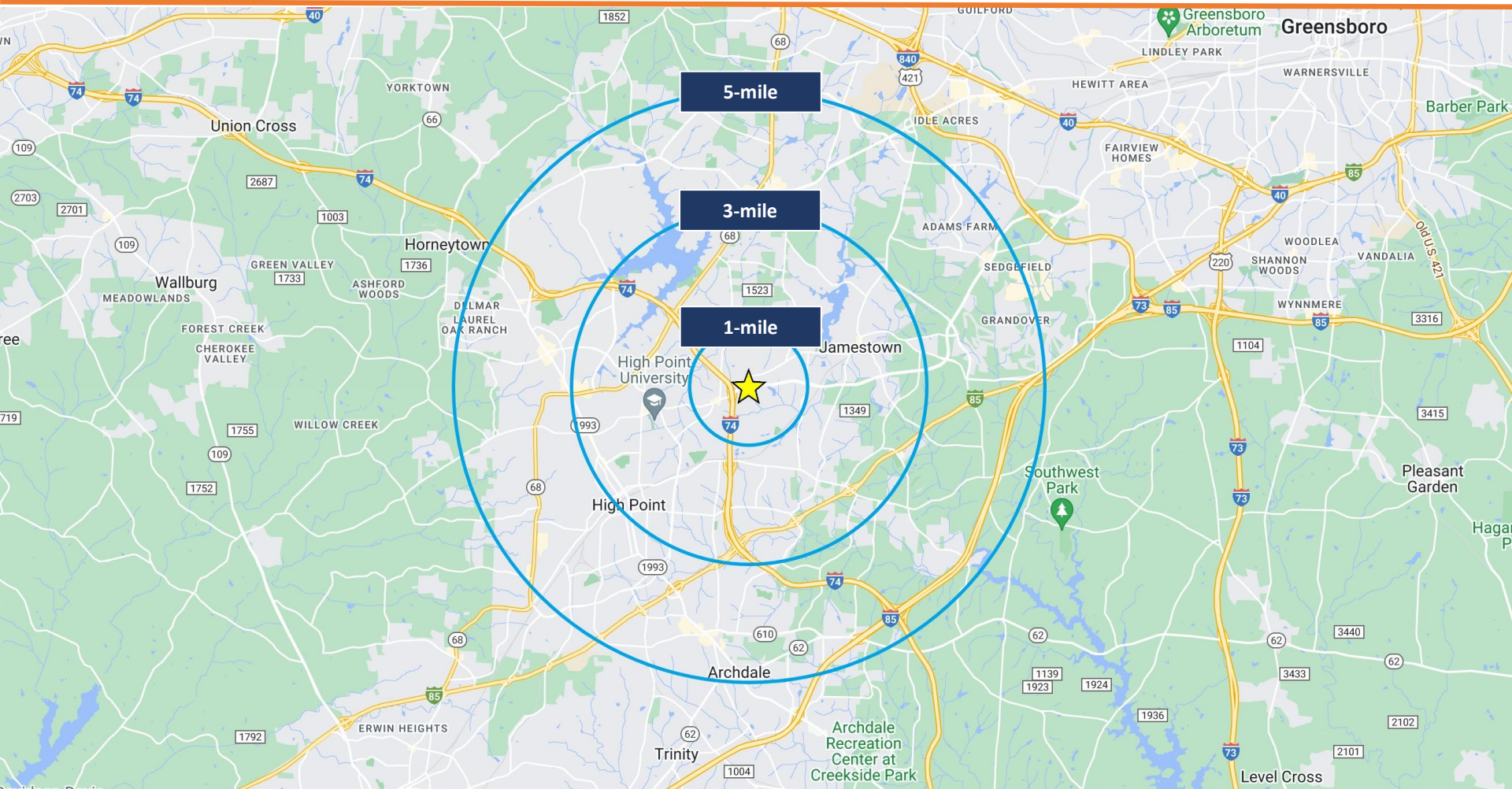
1349 Ring St. | High Point, NC



Tre Vaughn | Tre@BellCommercial.net | 336.429.0089

DEMOGRAPHIC RADIUS MAP

1349 Ring St. | High Point, NC



Tre Vaughn | Tre@BellCommercial.net | 336.429.0089

1, 3 & 5-MILE DEMOGRAPHICS

1349 Ring St. | High Point, NC

1349 Ring St. High Point, NC

1mi 3mi 5mi

POPULATION

2022 Estimated Population	6,209	56,133	131,150
2027 Projected Population	6,442	57,935	138,055
2020 Census Population	6,121	55,593	129,229
2010 Census Population	6,223	52,371	120,877
Projected Annual Growth 2022 to 2027	0.7%	0.6%	1.1%
Historical Annual Growth 2010 to 2022	-	0.6%	0.7%

HOUSEHOLDS

2022 Estimated Households	2,462	21,102	51,757
2027 Projected Households	2,596	22,178	55,231
2020 Census Households	2,415	20,764	50,816
2010 Census Households	2,414	20,007	47,728
Projected Annual Growth 2022 to 2027	1.1%	1.0%	1.3%
Historical Annual Growth 2010 to 2022	0.2%	0.5%	0.7%

AGE

2022 Est. Population Under 10 Years	10.8%	11.5%	12.1%
2022 Est. Population 10 to 19 Years	13.2%	16.6%	14.2%
2022 Est. Population 20 to 29 Years	10.3%	14.5%	12.8%
2022 Est. Population 30 to 44 Years	16.2%	17.8%	19.6%
2022 Est. Population 45 to 59 Years	20.2%	18.4%	19.3%
2022 Est. Population 60 to 74 Years	17.8%	15.4%	15.7%
2022 Est. Population 75 Years or Over	11.4%	5.8%	6.3%
2022 Est. Median Age	43.8	36.4	38.0

1349 Ring St. High Point, NC

1mi 3mi 5mi

MARITAL STATUS & GENDER

2022 Est. Male Population	46.5%	46.4%	47.1%
2022 Est. Female Population	53.5%	53.6%	52.9%
2022 Est. Never Married	40.4%	42.3%	35.1%
2022 Est. Now Married	28.5%	33.6%	42.7%
2022 Est. Separated or Divorced	23.2%	19.6%	17.5%
2022 Est. Widowed	7.9%	4.5%	4.8%

INCOME

2022 Est. HH Income \$200,000 or More	0.9%	3.2%	5.4%
2022 Est. HH Income \$150,000 to \$199,999	1.4%	2.7%	4.9%
2022 Est. HH Income \$100,000 to \$149,999	9.8%	10.2%	14.2%
2022 Est. HH Income \$75,000 to \$99,999	16.2%	12.0%	13.3%
2022 Est. HH Income \$50,000 to \$74,999	18.9%	18.7%	18.4%
2022 Est. HH Income \$35,000 to \$49,999	15.4%	16.6%	14.7%
2022 Est. HH Income \$25,000 to \$34,999	13.0%	13.2%	10.7%
2022 Est. HH Income \$15,000 to \$24,999	12.2%	8.9%	8.0%
2022 Est. HH Income Under \$15,000	12.2%	14.5%	10.3%
2022 Est. Average Household Income	\$62,695	\$68,471	\$77,900
2022 Est. Median Household Income	\$49,785	\$49,177	\$62,084
2022 Est. Per Capita Income	\$25,135	\$26,253	\$31,003
2022 Est. Total Businesses	204	2,677	6,246
2022 Est. Total Employees	2,222	35,205	74,187

Tre Vaughn | Tre@BellCommercial.net | 336.429.0089