

PRICE REDUCED!**Sale Price:****\$199,000**

(\$109/SF)

Lease Rate:**\$14.00/SF**

(MG + Utilities & Janitorial)

CONTACT US**Jeff Ridenour**

Associate Vice President

517 662 3551

jeff.ridenour@colliers.com

Colliers Lansing

2501 Coolidge Rd, Suite 300

East Lansing, MI 48823

colliers.com/lansing



FOR SALE OR LEASE

301 Williamston Center Rd,
Suite 500
Williamston, MI 48895

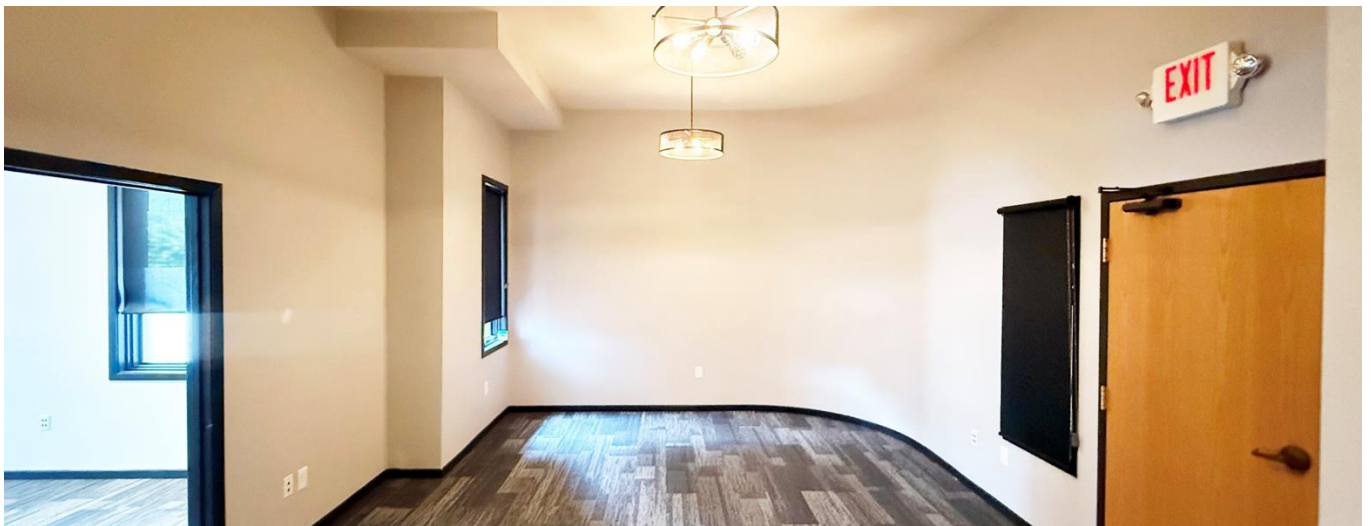
2,166 SF of Office Space Available**Property Highlights**

- Class A Brick Condominium Office Building
- High Ceilings and Carpet Squares Throughout
- Common Area Entry Lobby and Restrooms
- Situated on 0.05 Acres
- Built in 2003
- Zoning: C-2 (Commercial Office)
- Close Proximity to I-96 Interchange
- Taxes 2023: \$7,904
- Assessed Value: \$135,500
- Parcel # 33-18-07-12-102-005

2,166 SF OFFICE SPACE FOR SALE OR LEASE

Colliers

Interior Photos



2,166 SF OFFICE SPACE FOR SALE OR LEASE

Colliers

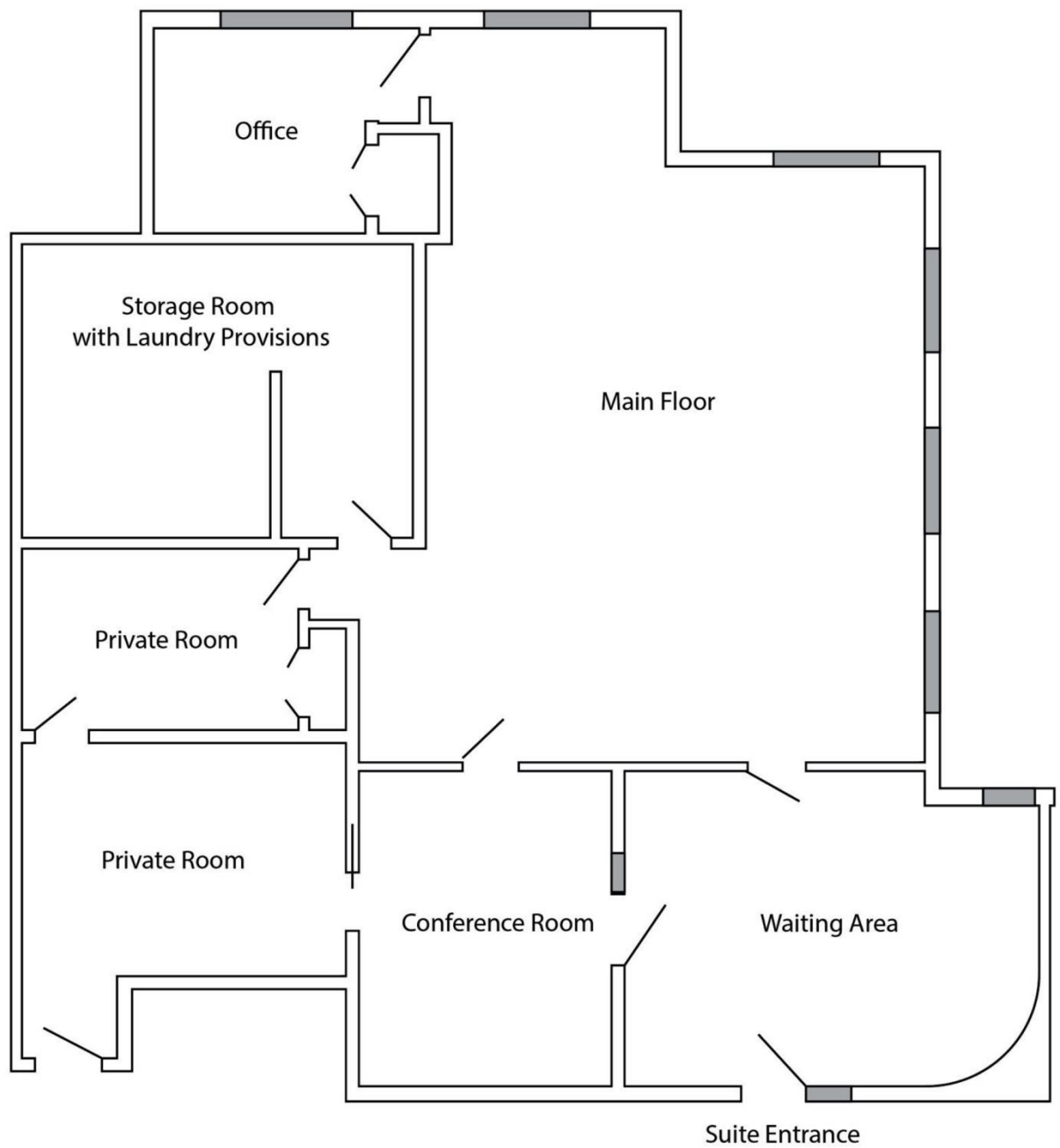
Interior Photos



2,166 SF OFFICE SPACE FOR SALE OR LEASE

Colliers

Floor Plan



2,166 SF OFFICE SPACE FOR SALE OR LEASE

Colliers

Aerial Map



Demographics

CURRENT YEAR SUMMARY	1 MILE RADIUS	3 MILE RADIUS	5 MILE RADIUS
Total Population	1,415	7,200	10,789
Total Households	608	2,946	4,246
Total Owner Occupied	67%	78%	83%
Average Household Size	2.3	2.4	2.5
Median Age	39.0	41.4	42.4
2000 – 2024 Population Change:	7.0%	6.2%	6.4%

5 YEAR PROJECTED TRENDS: ANNUAL RATE

Population	1,401	7,058	10,566
Households	614	2,945	4,237

CURRENT YEAR POPULATION BY SEX

Male Population / % Male	50%	51%	51%
Female Population / % Female	50%	49%	49%

INCOME & HOUSEHOLDS SUMMARY

Median Household Income	\$76,905	\$101,831	\$105,468
Average Household Income	\$97,679	\$131,671	\$140,771
Per Capita Income	\$42,800	\$55,668	\$55,607

SUMMARY BUSINESS DATA

Total Businesses	89	356	443
Total Employees	802	2,958	3,467
Total Daytime Population	1,486	6,079	8,413

Data Notes:

- Household population includes persons not residing in group quarters. Average Household Size is the household population divided by total households. Persons in families include the householder and persons related to the householder by birth, marriage, or adoption.
- Income represents the preceding year, expressed in current dollars. Household income includes wage and salary earnings, interest dividends, net rents, pensions, SSI and welfare payments, child support, and alimony.
- Per Capita Income represents the income received by all persons aged 15 years and over divided by the total population.



Jeff Ridenour
Associate Vice President
517 662 3551
jeff.ridenour@colliers.com