

WAREHOUSE FOR LEASE

2509 COX MILL ROAD

SANFORD, NC 27330



NAI TRI PROPERTIES

PROPERTY OVERVIEW

2509 Cox Mill Road, Sanford, NC

±95,756 SF OF WAREHOUSE MANUFACTURING SPACE AVAILABLE

ADDRESS	2509 Cox Mill Road, Sanford, NC 27330
BUILDING SIZE	Approximately 95,756 RSF
AVAILABLE SPACE	95,756 RSF
OFFICE SPACE	Includes 5,094 RSF front office with additional offices in the warehouse
RENTAL RATE	\$5.95 PSF, Triple Net
CLEAR HEIGHT	26' clear to middle joist 13'7"
LIGHTING	LED lighting
DOCK HIGH DOORS	Seven (7) docks
DRIVE-IN DOORS	Twelve (12) ramp entrances
TRUCK COURT	Entire site is fenced with tractor trailer storage area
FIRE PROTECTION	ESFR Fire Protection - wet system
ELECTRICAL	3 phase power servicing building via unlimited capacity potential
HEAT/CONDITIONING	Heated via gas pack units, humidifiers and fans
CRANES	Five (5) individual four (4) ton overhead crane systems
ZONING	Zoned LI Sanford ETJ Table of Permitted Uses
ROOF	New single ply roofing system
UTILITIES	Duke Energy (electric) PSNC Energy (gas) TriRiver Water, Windstream Internet and Security Central
ADDITIONAL SPACE	Warehouse #2 on floorplan potentially available for lease ±6,000 SF, 1 ramp, 18' ceiling height

CONTACT

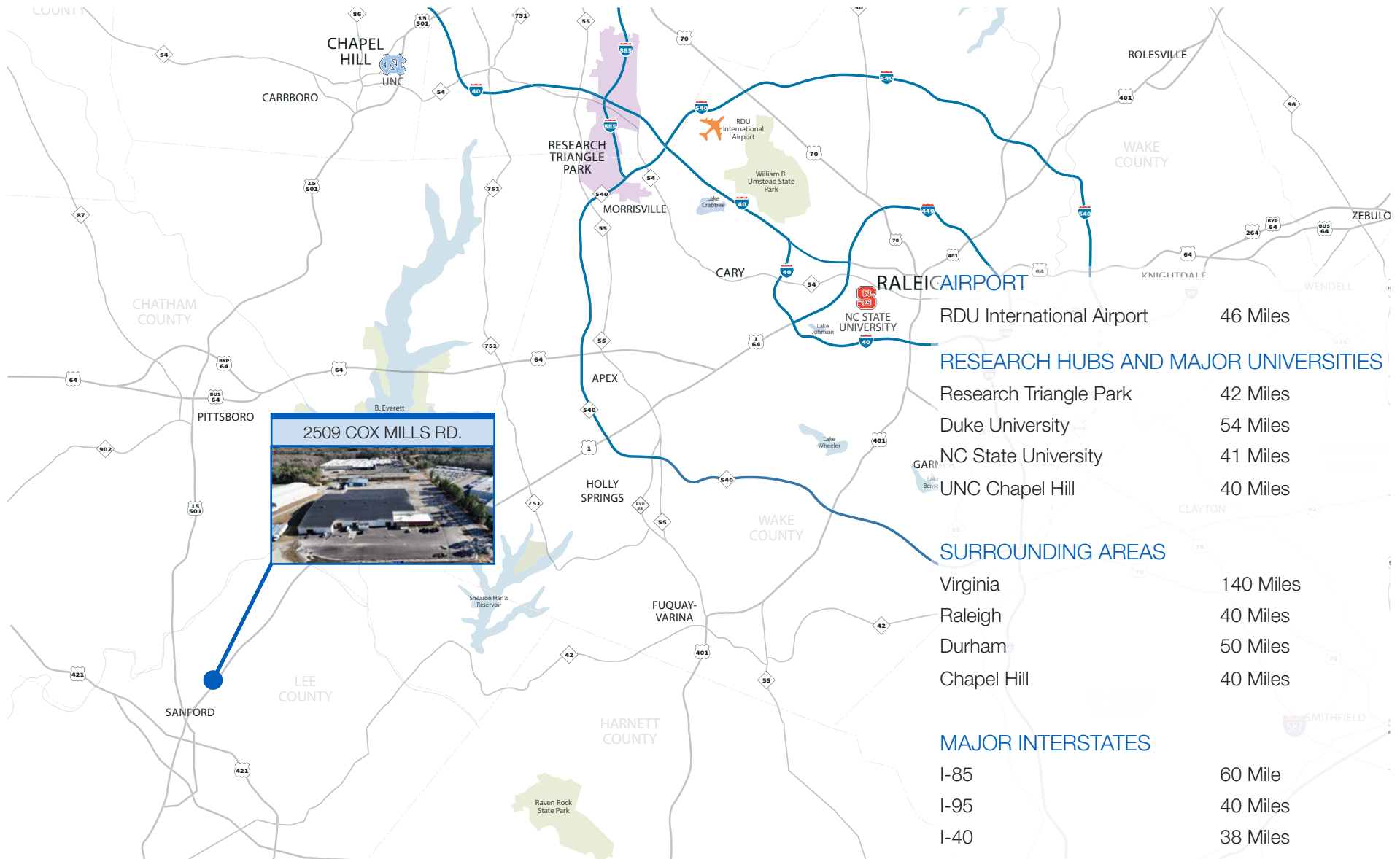
ED BROWN | 919.345.5939 | ebrown@triprop.com

BRYAN EVERETT | 919.740.9309 | bryan@nci-prop.com

THOMAS FLYNN | 704.999.8504 | tflynn@triprop.com



REGIONAL OVERVIEW



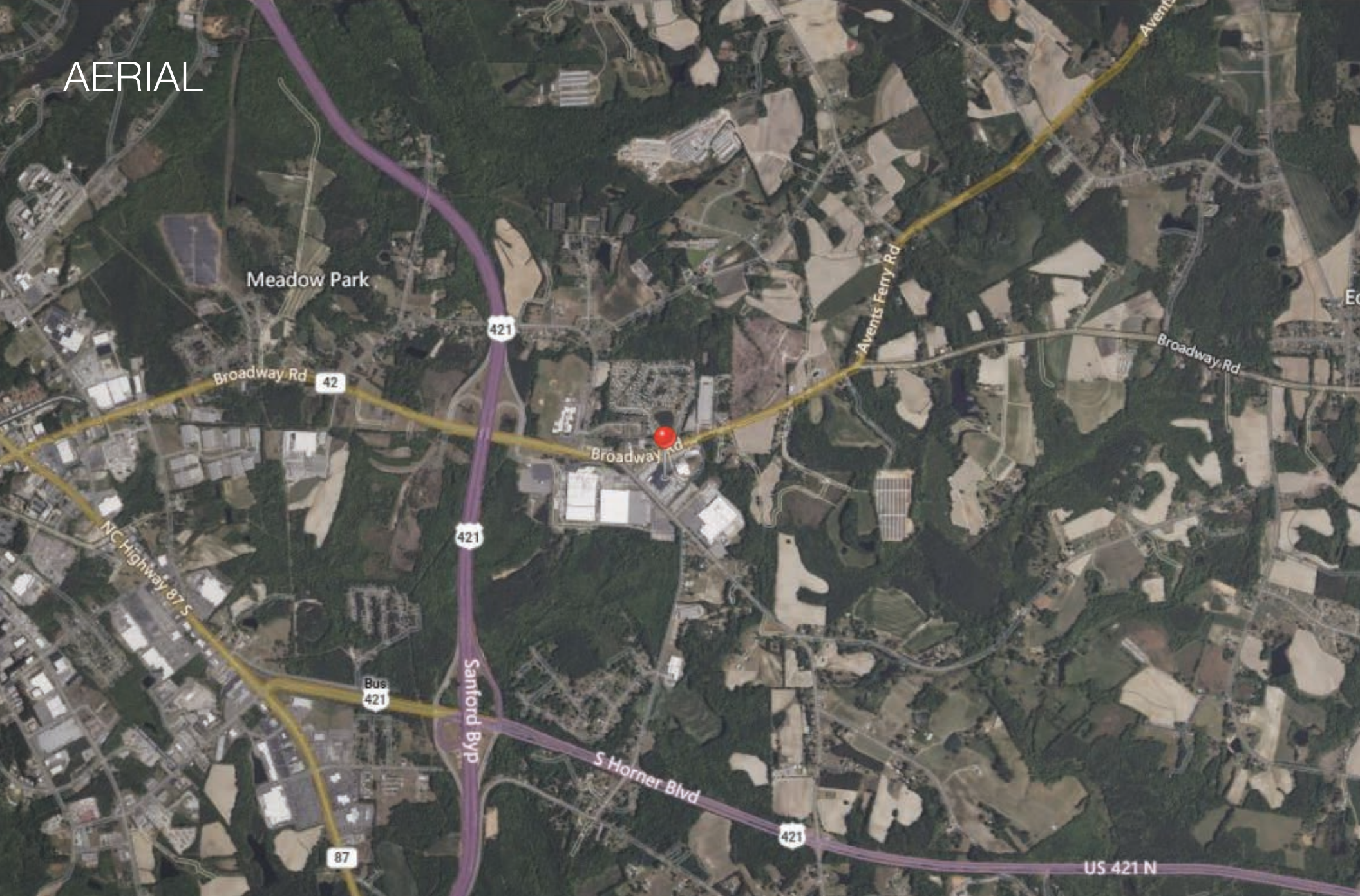
CONTACT

ED BROWN | 919.345.5939 | ebrown@triprop.com
BRYAN EVERETT | 919.740.9309 | bryan@nci-prop.com
THOMAS FLYNN | 704.999.8504 | tflynn@triprop.com

All information provided herein is from sources deemed reliable. However, all information is subject to verification. NAI Tri Properties does not independently verify nor warrant the accuracy of the information.



AERIAL

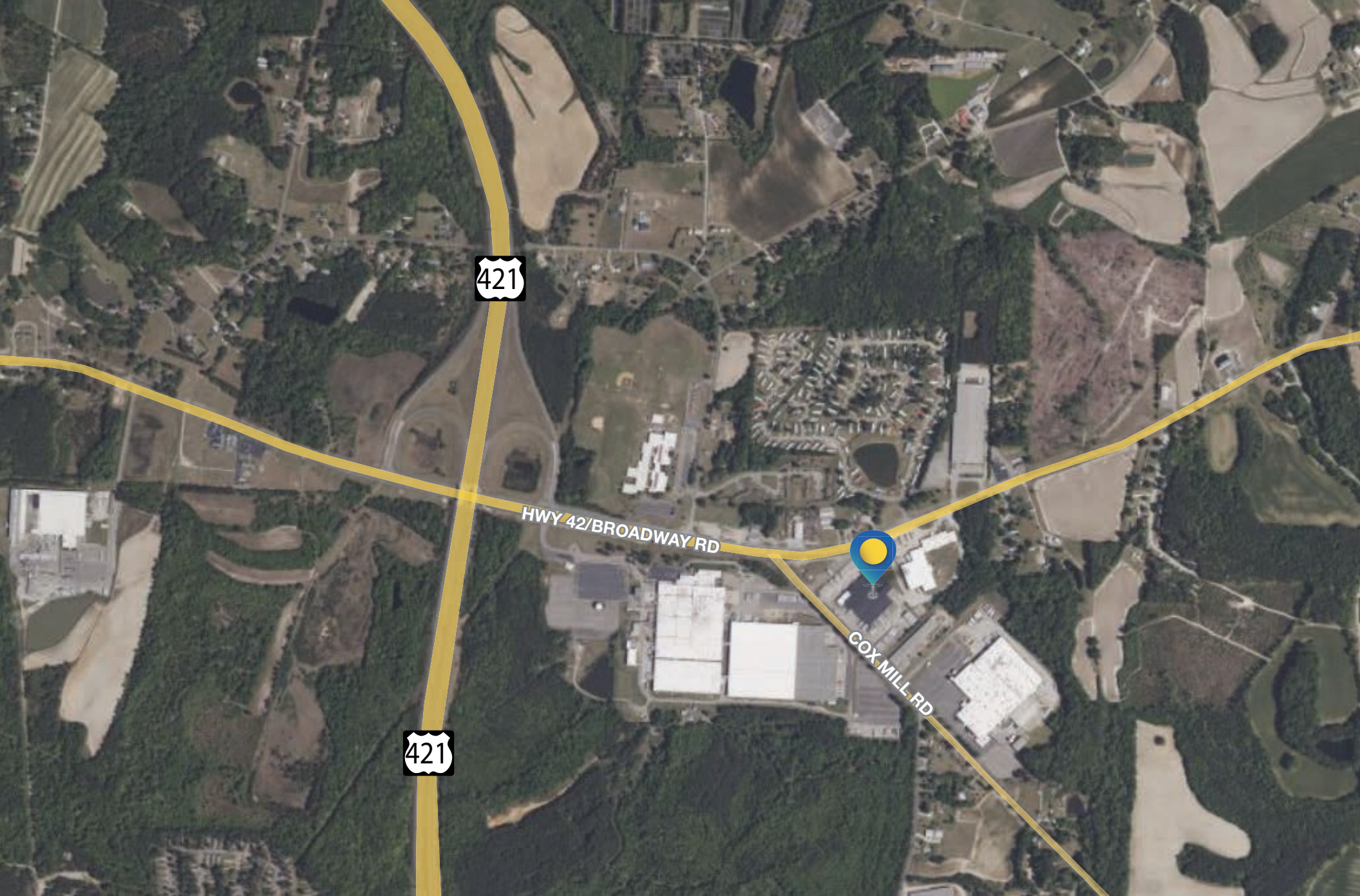


CONTACT

ED BROWN | 919.345.5939 | ebrown@triprop.com
BRYAN EVERETT | 919.740.9309 | bryan@nci-prop.com
THOMAS FLYNN | 704.999.8504 | tflynn@triprop.com

All information provided herein is from sources deemed reliable. However, all information is subject to verification. NAI Tri Properties does not independently verify nor warrant the accuracy of the information.

NAITRI PROPERTIES



CONTACT

ED BROWN | 919.345.5939 | ebrown@triprop.com
BRYAN EVERETT | 919.740.9309 | bryan@nci-prop.com
THOMAS FLYNN | 704.999.8504 | tflynn@triprop.com

All information provided herein is from sources deemed reliable. However, all information is subject to verification. NAI Tri Properties does not independently verify nor warrant the accuracy of the information.

NAITRI PROPERTIES



CONTACT

ED BROWN | 919.345.5939 | ebrown@triprop.com
BRYAN EVERETT | 919.740.9309 | bryan@nci-prop.com
THOMAS FLYNN | 704.999.8504 | tflynn@triprop.com

All information provided herein is from sources deemed reliable. However, all information is subject to verification. NAI Tri Properties does not independently verify nor warrant the accuracy of the information.

NAITRI PROPERTIES

EXTERIOR LOADING



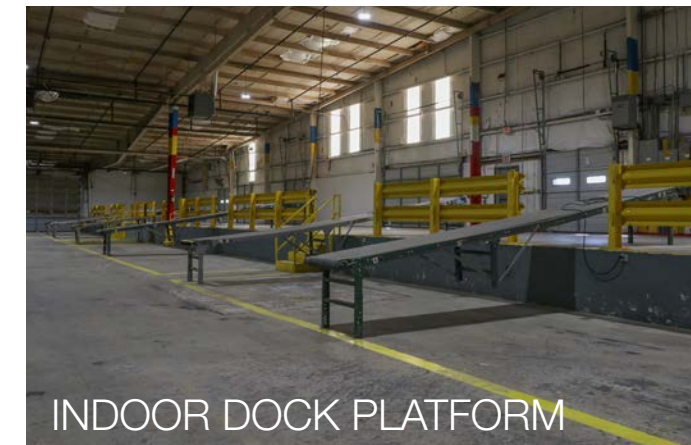
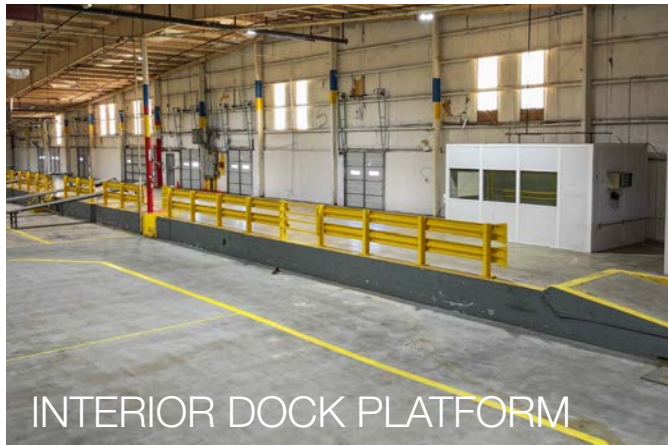
CONTACT

ED BROWN | 919.345.5939 | ebrown@triprop.com
BRYAN EVERETT | 919.740.9309 | bryan@nci-prop.com
THOMAS FLYNN | 704.999.8504 | tflynn@triprop.com

All information provided herein is from sources deemed reliable. However, all information is subject to verification. NAI Tri Properties does not independently verify nor warrant the accuracy of the information.

NAITRI PROPERTIES

INTERIOR LOADING



CONTACT

ED BROWN | 919.345.5939 | ebrown@triprop.com
BRYAN EVERETT | 919.740.9309 | bryan@nci-prop.com
THOMAS FLYNN | 704.999.8504 | tflynn@triprop.com

All information provided herein is from sources deemed reliable. However, all information is subject to verification. NAI Tri Properties does not independently verify nor warrant the accuracy of the information.

NAITRI PROPERTIES

INTERIOR LOADING



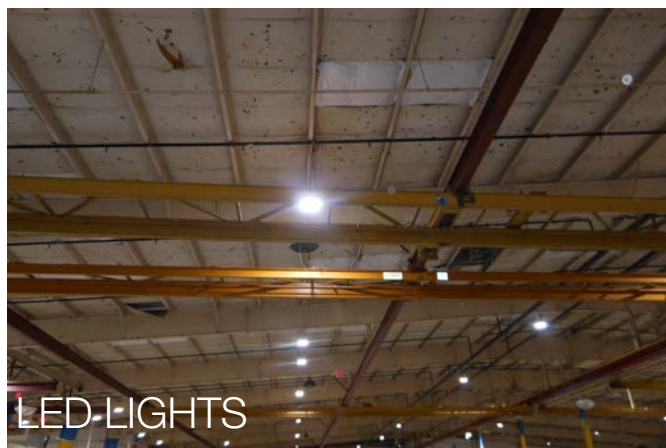
CONTACT

ED BROWN | 919.345.5939 | ebrown@triprop.com
BRYAN EVERETT | 919.740.9309 | bryan@nci-prop.com
THOMAS FLYNN | 704.999.8504 | tflynn@triprop.com

All information provided herein is from sources deemed reliable. However, all information is subject to verification. NAI Tri Properties does not independently verify nor warrant the accuracy of the information.

NAITRI PROPERTIES

UTILITIES



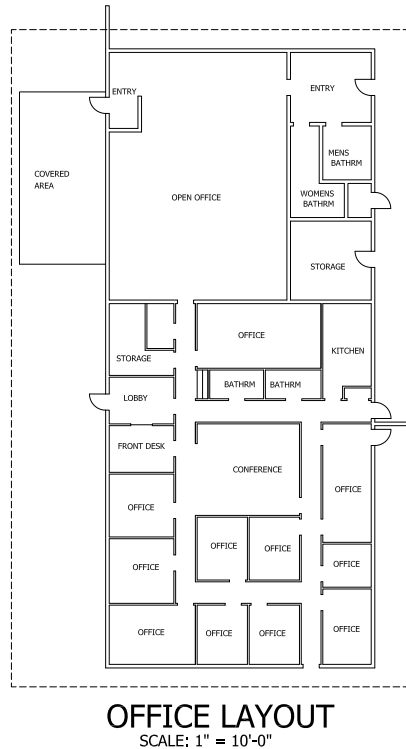
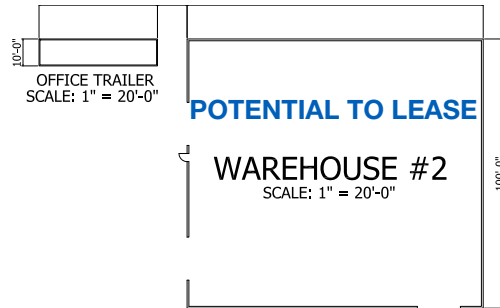
CONTACT

ED BROWN | 919.345.5939 | ebrown@triprop.com
BRYAN EVERETT | 919.740.9309 | bryan@nci-prop.com
THOMAS FLYNN | 704.999.8504 | tflynn@triprop.com

All information provided herein is from sources deemed reliable. However, all information is subject to verification. NAI Tri Properties does not independently verify nor warrant the accuracy of the information.

NAI TRI PROPERTIES

FLOORPLAN



CONTACT

ED BROWN | 919.345.5939 | ebrown@triprop.com
 BRYAN EVERETT | 919.740.9309 | bryan@nci-prop.com
 THOMAS FLYNN | 704.999.8504 | tflynn@triprop.com

All information provided herein is from sources deemed reliable. However, all information is subject to verification.
 NAI Tri Properties does not independently verify nor warrant the accuracy of the information.

2509 COXMILL RD.
 SANFORD, NC



ANGIER, NC
 919-369-7181

DRAWN BY:
 D.W.O.

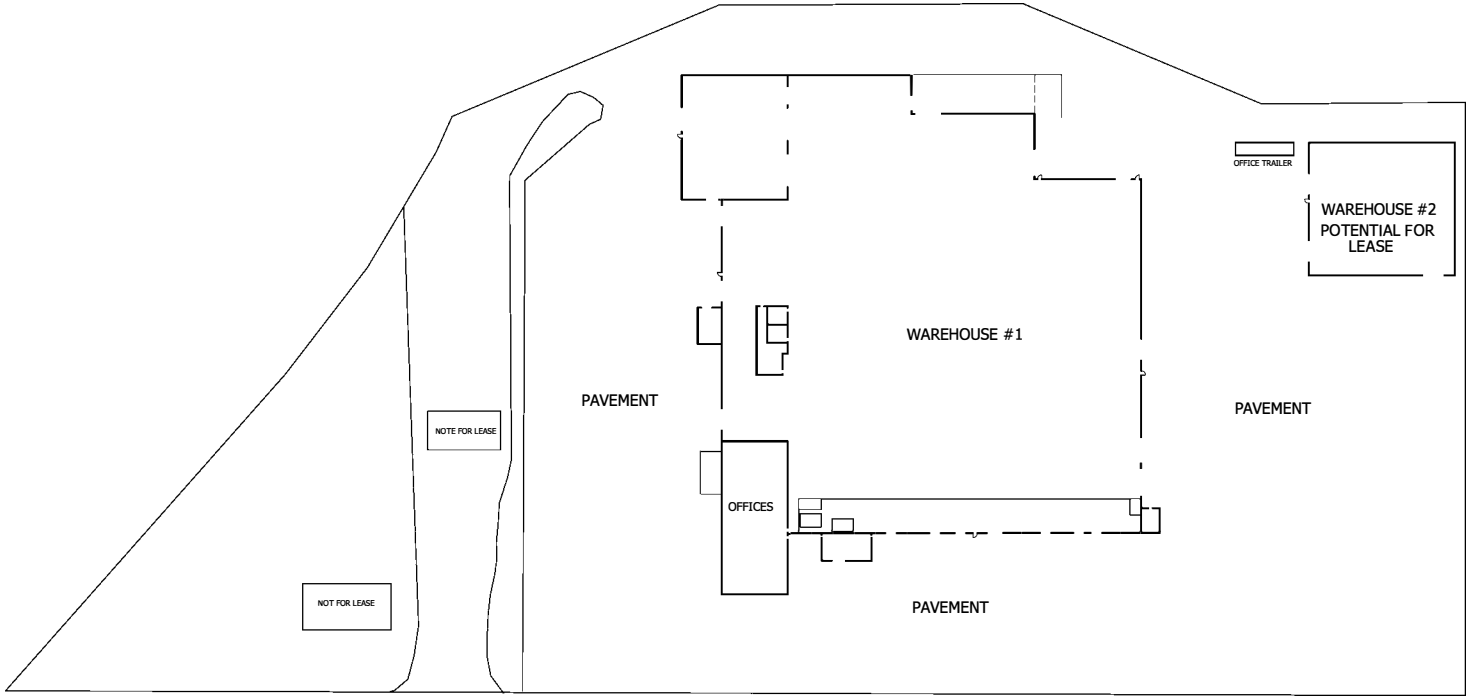
DATE:
 12/30/25

PAGE NO

2
 OF
 2

NAI TRI PROPERTIES

SITE PLAN



OVERALL SITE PLAN
SCALE: 1" = 40'-0"

CONTACT

ED BROWN | 919.345.5939 | ebrown@triprop.com
BRYAN EVERETT | 919.740.9309 | bryan@nci-prop.com
THOMAS FLYNN | 704.999.8504 | tflynn@triprop.com

All information provided herein is from sources deemed reliable. However, all information is subject to verification. NAI Tri Properties does not independently verify nor warrant the accuracy of the information.



AMENITIES

Sanford, NC is a thriving hub for business and innovation, with a diverse economy anchored by advanced manufacturing, life sciences, and technology. The Sanford Area Growth Alliance and Chamber of Commerce lead efforts to attract new industries while supporting existing businesses through networking events, leadership programs like Leadership Sanford, and resources for entrepreneurs.

SURROUNDING BUSINESSES

Sanford Child Care Center
M&M Small Engine Repair
Granite Pros
Sanford Muffler and Towing
Paradise Towing & Recovery
Strickland Brothers
Planet Fitness
Farmers Home Furniture
Ollie's
Sanford NC ABC Store
Classic Nissan of Sanford
Fred Anderson Toyota of Sanford
Wilkinson Chevrolet GMC
Sanford Honda
American Self Storage Sanford
Watson's Nursery

DINING OPTIONS

Chick-fil-A
Aye! Toro Tacos & Tequila
Golden Corral Buffet & Grill
El Rolas Restaurant & Bar
Fonda Lupita
Goodfellas Grill
San Felipe Mexican
Tacos El Primo
Alpaca Peruvian
Yarborough's Ice Cream
Big "T's" Restaurant
Smoke and Barrel
Hugger Mugger Brewing
Fairview Dairy Bar
PD Quix
Starbucks
Jersey Mike's Subs
McDonald's

RETAIL & GROCERIES

Hobby Lobby
Walmart Supercenter
Lowe's Home Improvement
Dollar General
Lidl
Aldi
Ross Dress for Less
Big Lots
Food Lion
Save A Lot
Piggly Wiggly of Sanford
Sanford Grocery Store
Rivera's Supermarket
Marshalls
Sanford Antique Mall
Fast Mart
Added Accents

HOTELS

Comfort Suites Sanford
Holiday Inn Express
Hampton Inn Sanford
Baymont by Wyndham Sanford
Days Inn by Wyndham Sanford
Red Roof Inn Sanford
Home2 Suites by Hilton Sanford
Palomino Hotel

CONTACT

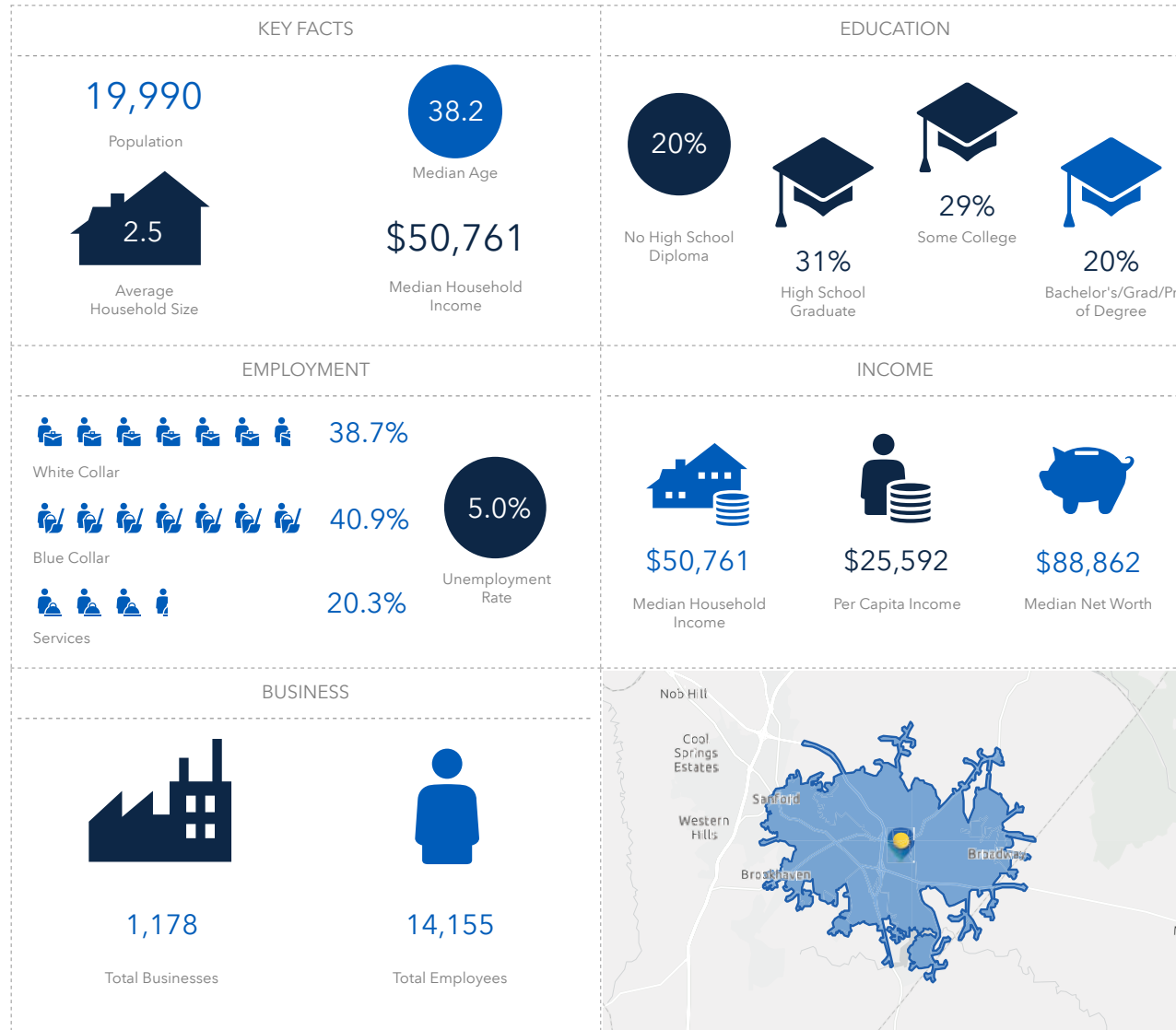
ED BROWN | 919.345.5939 | ebrown@triprop.com
BRYAN EVERETT | 919.740.9309 | bryan@nci-prop.com
THOMAS FLYNN | 704.999.8504 | tflynn@triprop.com

All information provided herein is from sources deemed reliable. However, all information is subject to verification. NAI Tri Properties does not independently verify nor warrant the accuracy of the information.



DEMOGRAPHICS

5 MILE



LEE COUNTY SANFORD

Within a 45 mile radius from Sanford, one can reach downtown Raleigh, downtown Durham, Research Triangle Park, as well as Chatham and Harnett Counties. Its proximity to world-class education, talent work-force, and reasonable commute time has contributed to its continued growth rate.

SITES AND PROPERTIES

Strategically located in the heart of NC, Lee County and the city of Sanford is the right choice to relocate or expand your business. A supportive and reliable infrastructure, coupled with an unbeatable tax climate, positions all businesses to prosper in Sanford.

KEY INDUSTRIES

Taking advantage of its abundant resources, Sanford has made a name for itself across diverse industries. While manufacturing and agriculture serve as the backbone, the city's industrial foundation and innovative spirit have also opened the door to new growth in life sciences, energy and defense.

Known for its strong industrial center, Sanford is home to large-scale brick production and manufacturing companies including Lee Brick and Tile and Caterpillar. The city is also emerging as a major textile and biotech industry hub, with Pfizer among the largest and top employers.

BUSINESS RESOURCES

Sanford and the surrounding area's local governments and agencies prioritize the needs of business owners by providing a variety of resources to ensure success.

CONTACT

ED BROWN | 919.345.5939 | ebrown@triprop.com
 BRYAN EVERETT | 919.740.9309 | bryan@nci-prop.com
 THOMAS FLYNN | 704.999.8504 | tflynn@triprop.com

All information provided herein is from sources deemed reliable. However, all information is subject to verification. NAI Tri Properties does not independently verify nor warrant the accuracy of the information.

NAI TRI PROPERTIES

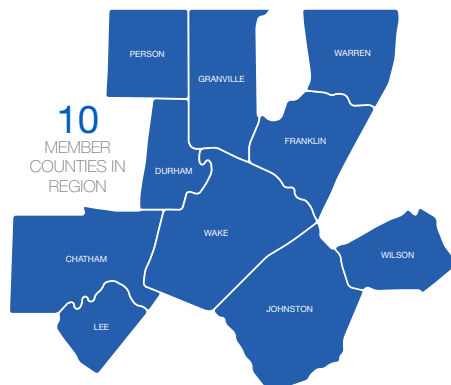
RESEARCH TRIANGLE REGION

Overview + Information

Top Business Climate

Anchored by one of the nation's largest research parks and three nationally renowned research universities, the Research Triangle area consistently ranks among the nation's best economies year after year. Industry giants in pharmaceuticals, computer software, telecommunications, cleantech, and biotechnology dot the landscape, helping to fuel thriving retail sales and entrepreneurial success. In 2021, Apple, Google, and Nike announced headquarter expansion plans into the Triangle market.

The region is comprised of ten member counties and the Research Triangle Park.



Exponential Population Growth

Considered the fastest-growing region in the state, the Raleigh/Durham/Research Triangle region has a population of over 2 million and has grown by more than 40% in the last 20 years. The area is expected to grow at an even faster rate in the next decade. Within the Triangle region, Wake County is the largest and fastest-growing area with a population of more than 1,072,000, adding approximately 65 people per day.

Consistent Employment Growth

The Triangle area has had consistently low unemployment rates and high job growth rates. The area's unemployment is consistently below the state and national rates. The metro area's economic success is most evident in the rising incomes of its residents. The region's per capita income has long outstripped the state's per capita income, and this solid economic performance is projected to continue to increase over the next 15 years.

Diversified Employment Base

At the heart of the region's success lies a diverse and growing blend of people and cultures from every corner of the globe. The region's quality growth and ability to mix native traditions and newcomer influences have shaped a population full of vitality, diversity, and prosperity. This talent-attractive environment boasts one of the most highly educated and diverse workforces in the nation. With more than 46 percent of its 25-or-older population holding a bachelor's degree or higher, it's no wonder Forbes magazine ranked Raleigh as one of the best cities for new college grads.

Innovation

As the home of three nationally renowned research universities, the Triangle has garnered a reputation for innovation and entrepreneurship. The Research Triangle region utilizes a triple helix business model in which leaders from the area's businesses, government, and major research universities work together to transform business practices; acquire and develop the latest technology to enable new companies and industries to thrive.

Quality of Life

The low cost of living, quality health care, and ready access to abundant recreational activities make the Triangle region a desirable place to start or relocate a business. Centrally located between the majestic Blue Ridge Mountains to the west and the legendary Outer Banks/Atlantic coast to the east, the Triangle enjoys a favorable climate year-round. Tropical air in the summer and mild temperatures in the winter keep the mean annual temperature at a comfortable 60 degrees.

CONTACT

ED BROWN | 919.345.5939 | ebrown@triprop.com
BRYAN EVERETT | 919.740.9309 | bryan@nci-prop.com
THOMAS FLYNN | 704.999.8504 | tflynn@triprop.com

All information provided herein is from sources deemed reliable. However, all information is subject to verification. NAI Tri Properties does not independently verify nor warrant the accuracy of the information.

NAITRI PROPERTIES

REGIONAL CONNECTIVITY

