

# RETAIL SPACE AVAILABLE IN THE HEART OF SHERMAN OAKS

14318 - 14398 Ventura Boulevard, Sherman Oaks, CA 91335



**MICHAEL SHARON (818) 572-4050**

msharon@illicre.com • DRE#01495419

5990 Sepulveda Blvd., Ste. 600 • Sherman Oaks, CA 91411 • 818.501.2212/Phone • 818.501.2202/Fax • [www.illicre.com](http://www.illicre.com) • DRE #01834124

This information has been secured from sources we believe to be reliable, but we make no representations or warranties, expressed or implied, as to the accuracy of the information. References to square footage are approximate. References to neighboring retailers are subject to change, and may not be adjacent to the vacancy being marketed either prior to, during, or after leases are signed. Lessee must verify the information and bears all risk for any inaccuracies.

**FOLLOW US**





# RETAIL SPACE AVAILABLE IN THE HEART OF SHERMAN OAKS

14318 - 14398 Ventura Boulevard, Sherman Oaks, CA 91335

## PROPERTY FEATURES

- Prime retail center situated in the heart of Sherman Oaks
- Located on the SEC of Ventura & Beverly Glen
- Excellent co-tenancy including many service oriented businesses
- Across the street from Whole Foods (coming soon)

## AREA AMENITIES

- Busy intersection
- Great for service oriented businesses

## SPACES AVAILABLE

- Unit 14396:  $\pm 2,996$  SF | \$3.00 PSF + \$0.80 PSF NNN per Month

DEMOS	1 mile	3 mile	5 mile
Population	46,411	343,551	759,583
Avg. HH Income	\$55,677	\$63,949	\$77,465
Daytime Pop.	14,115	109,582	261,210
Traffic Count	$\pm 50,000$ cars per day		



**MICHAEL SHARON (818) 572-4050**

msharon@illicre.com • DRE#01495419

5990 Sepulveda Blvd., Ste. 600 • Sherman Oaks, CA 91411 • 818.501.2212/Phone • 818.501.2202/Fax • [www.illicre.com](http://www.illicre.com) • DRE #01834124

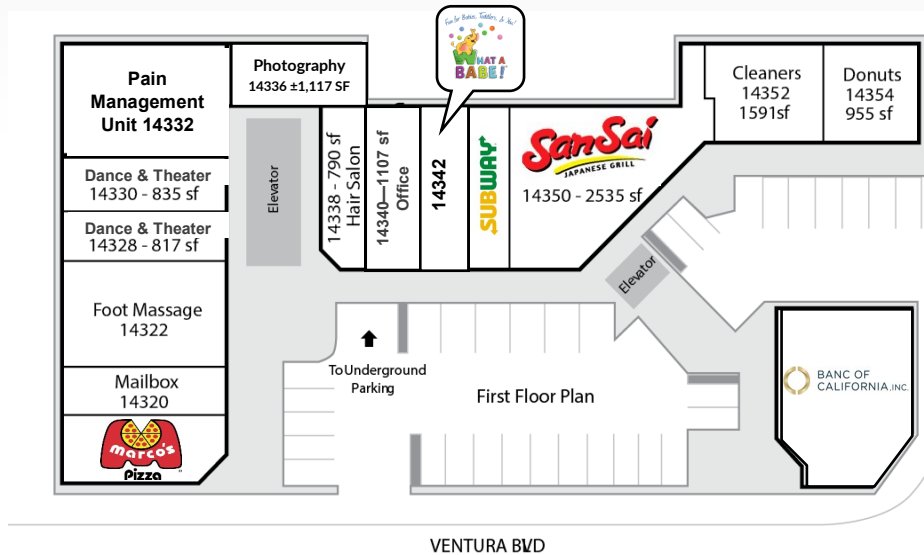
This information has been secured from sources we believe to be reliable, but we make no representations or warranties, expressed or implied, as to the accuracy of the information. References to square footage are approximate. References to neighboring retailers are subject to change, and may not be adjacent to the vacancy being marketed either prior to, during, or after leases are signed. Lessee must verify the information and bears all risk for any inaccuracies.

**FOLLOW US**

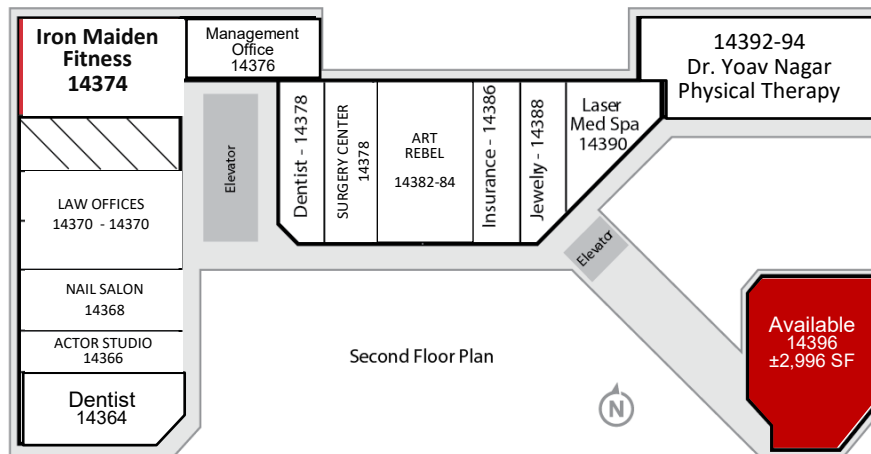
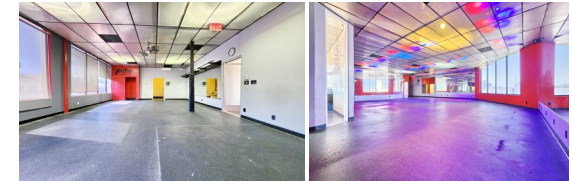
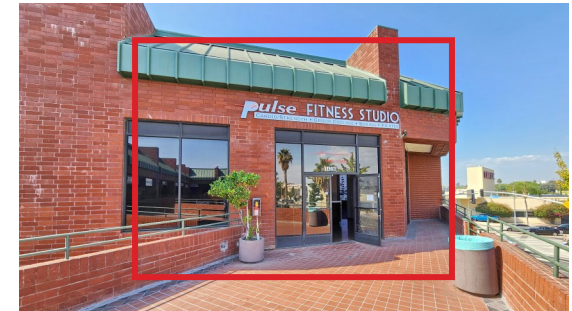


# RETAIL SPACE AVAILABLE IN THE HEART OF SHERMAN OAKS

14318 - 14398 Ventura Boulevard, Sherman Oaks, CA 91335



Unit 14396: ±2,996 SF | \$3.00 PSF + \$0.80 PSF



MICHAEL SHARON (818) 572-4050

msharon@illicre.com · DRE#01495419

5990 Sepulveda Blvd., Ste. 600 • Sherman Oaks, CA 91411 • 818.501.2212/Phone • 818.501.2202/Fax • [www.illicre.com](http://www.illicre.com) • DRE #01834124

This information has been secured from sources we believe to be reliable, but we make no representations or warranties, expressed or implied, as to the accuracy of the information. References to square footage are approximate. References to neighboring retailers are subject to change, and may not be adjacent to the vacancy being marketed either prior to, during, or after leases are signed. Lessee must verify the information and bears all risk for any inaccuracies.



FOLLOW US





# RETAIL SPACE AVAILABLE IN THE HEART OF SHERMAN OAKS

14318 - 14398 Ventura Boulevard, Sherman Oaks, CA 91335



**MICHAEL SHARON (818) 572-4050**

msharon@illicre.com • DRE#01495419

5990 Sepulveda Blvd., Ste. 600 • Sherman Oaks, CA 91411 • 818.501.2212/Phone • 818.501.2202/Fax • [www.illicre.com](http://www.illicre.com) • DRE #01834124

This information has been secured from sources we believe to be reliable, but we make no representations or warranties, expressed or implied, as to the accuracy of the information. References to square footage are approximate. References to neighboring retailers are subject to change, and may not be adjacent to the vacancy being marketed either prior to, during, or after leases are signed. Lessee must verify the information and bears all risk for any inaccuracies.

**FOLLOW US**

