

20,000 - 150,000 RSF
for SUBLEASE

THREE

WESTBROOK CORPORATE CENTER

Westchester, IL

Sean Kropke
+1 847 361 9720
sean.kropke@cushwake.com

Dan Svachula
+1 773 490 8555
daniel.svachula@cushwake.com



CLICK HERE TO TAKE A
3D VIRTUAL TOUR!



ABOUT THE BUILDING

Westbrook Corporate Center is THE largest office complex in the western suburbs and offers a full suite of phenomenal amenities. This sublease opportunity provides access to all the incredible amenities on-site including:

- New Tenant Lounge & Game Room
- Starbucks Coffee
- The Bistro Restaurant/Bar
- Conferencing Facilities
- Fitness Center with Locker Rooms
- Daycare
- On-Site Security & Property Management
- Dry Cleaning
- ATM
- Sundry Shop
- Easy Access to Walking/Biking Paths
- Plenty of Parking (Surface & Garage)





OUTSTANDING OFFICE SPACE

This fantastic sublease opportunity offers fully-furnished, high-end office space with ample natural light throughout.

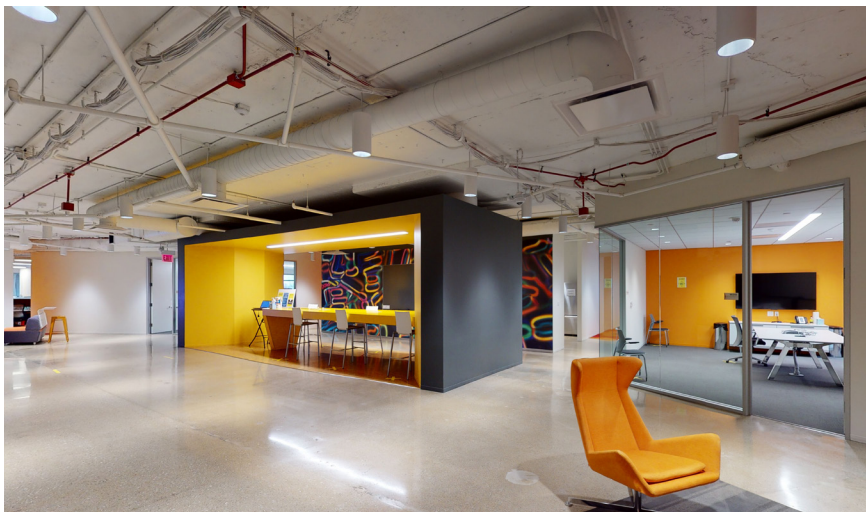
Unique collaboration and meeting spaces

Socially distanced layout ready for occupancy

First floor direct access available

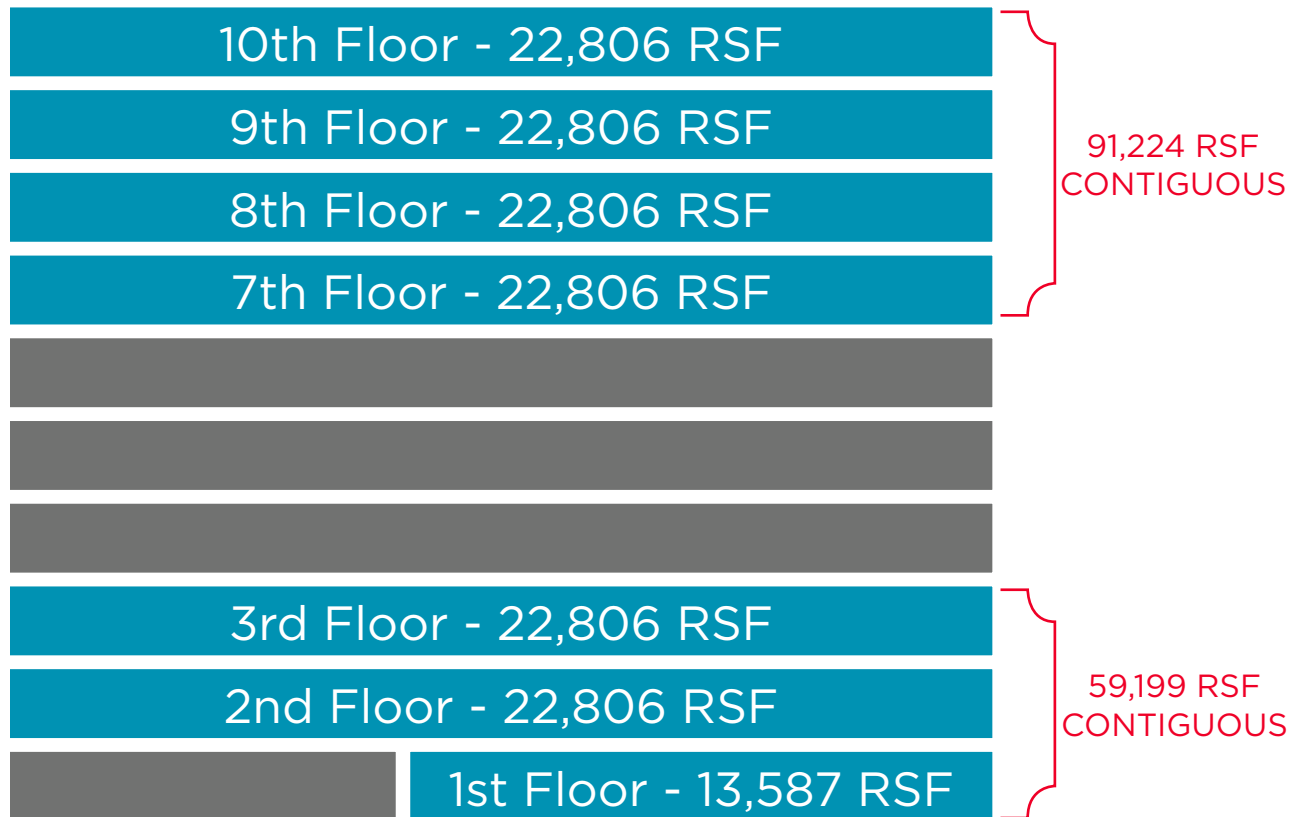
Asking Rate: Subject to Offer

Sublease Expiration: 10/31/2025

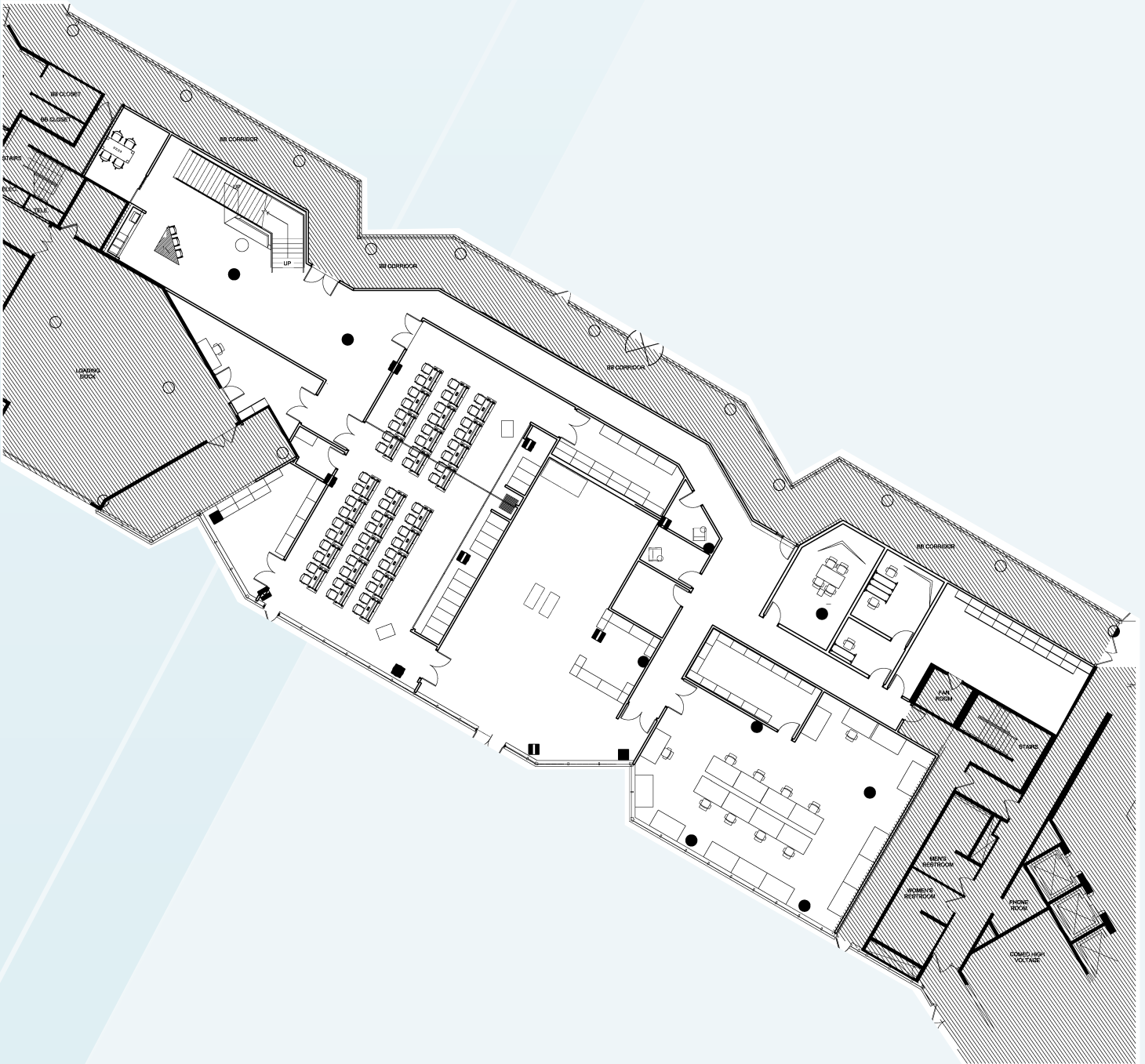


AVAILABLE SPACES

Up to 150,423 RSF is available across 7 floors, which can be demised to one floor or greater.

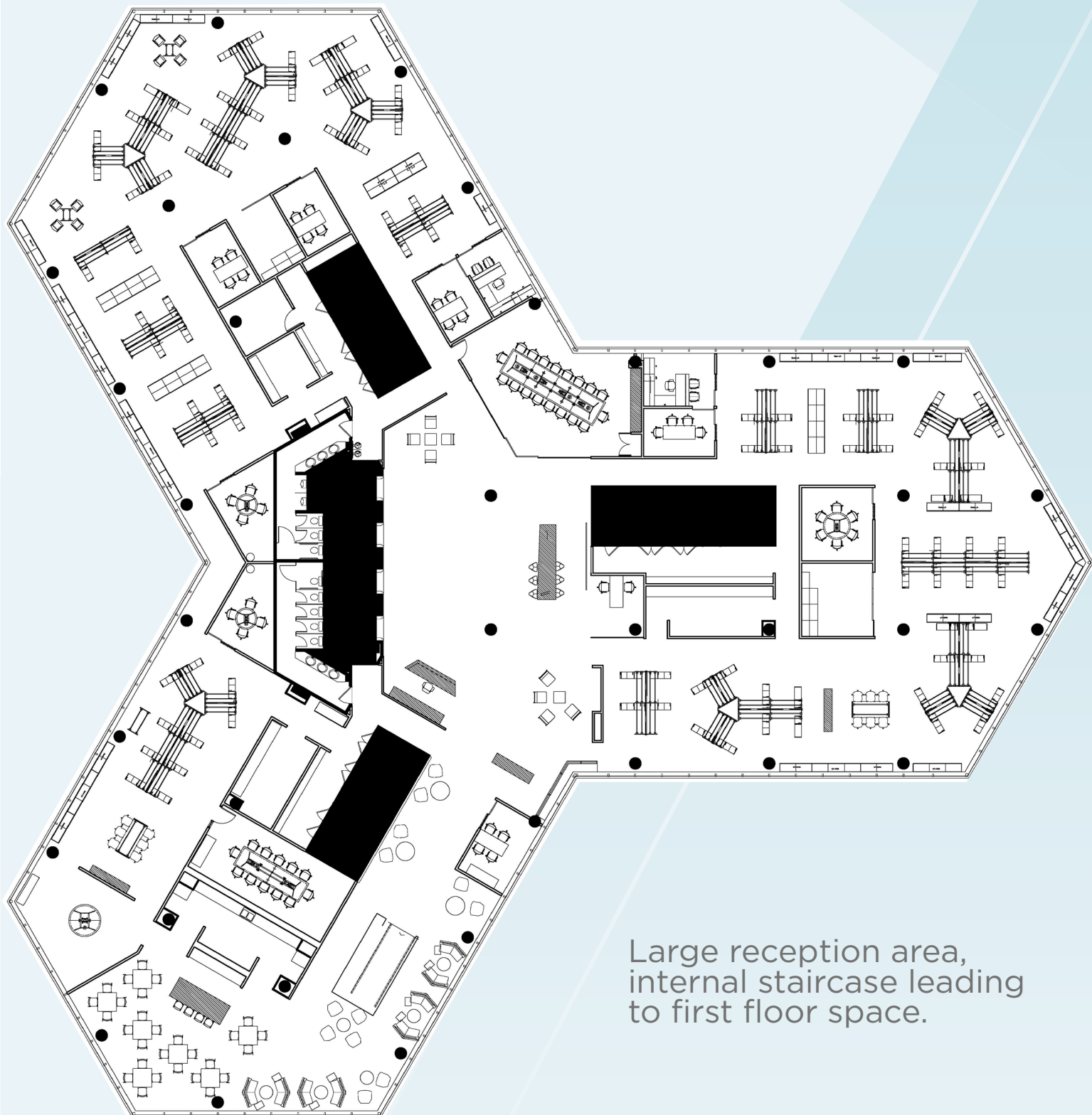


13,587 RSF - 1ST FLOOR



Expansive training room, immediate first floor exterior access (private), plus additional office/flex space connected via internal staircase from the 2nd floor.

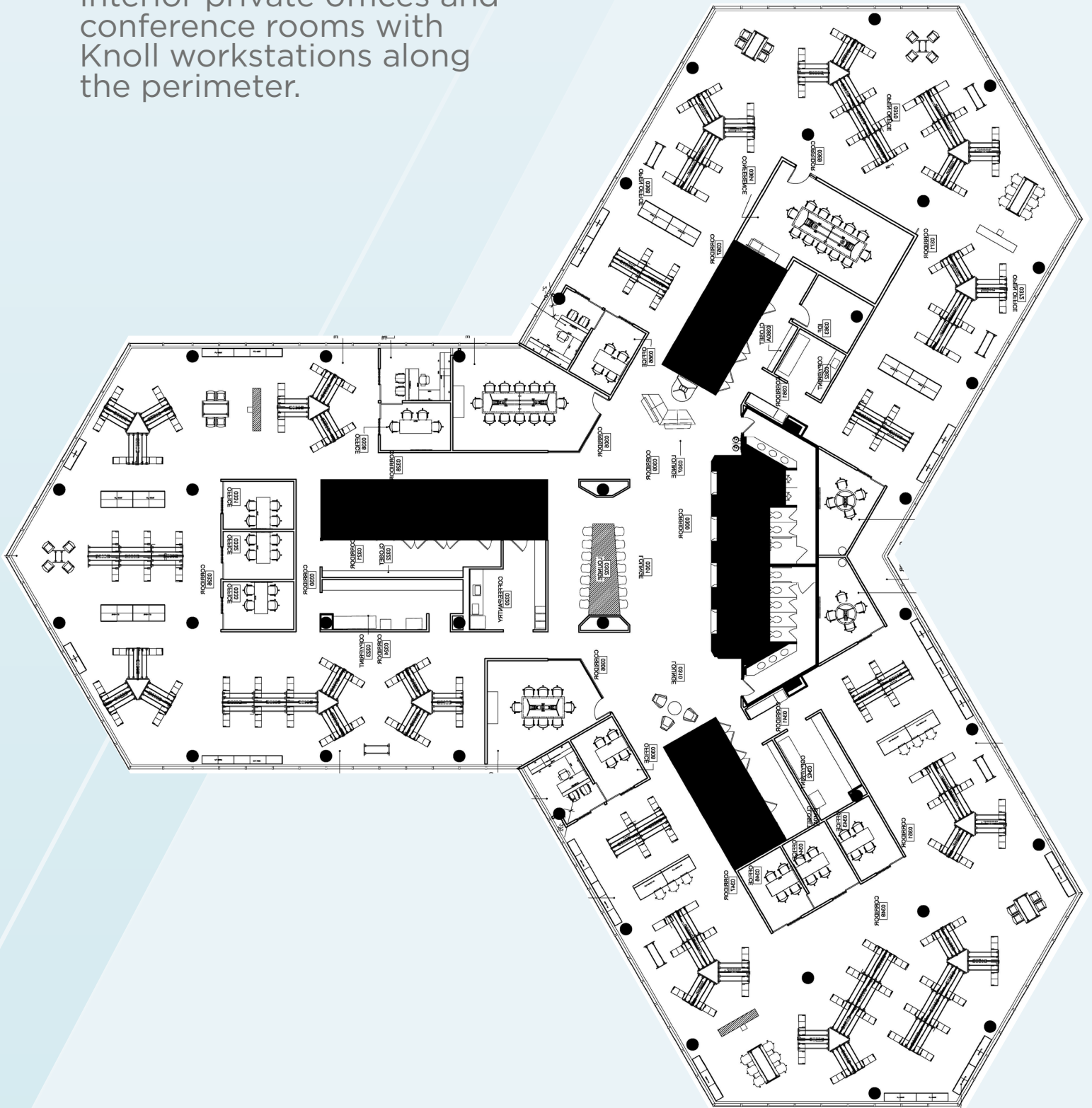
2ND FLOOR - 22,806 RSF



Large reception area,
internal staircase leading
to first floor space.

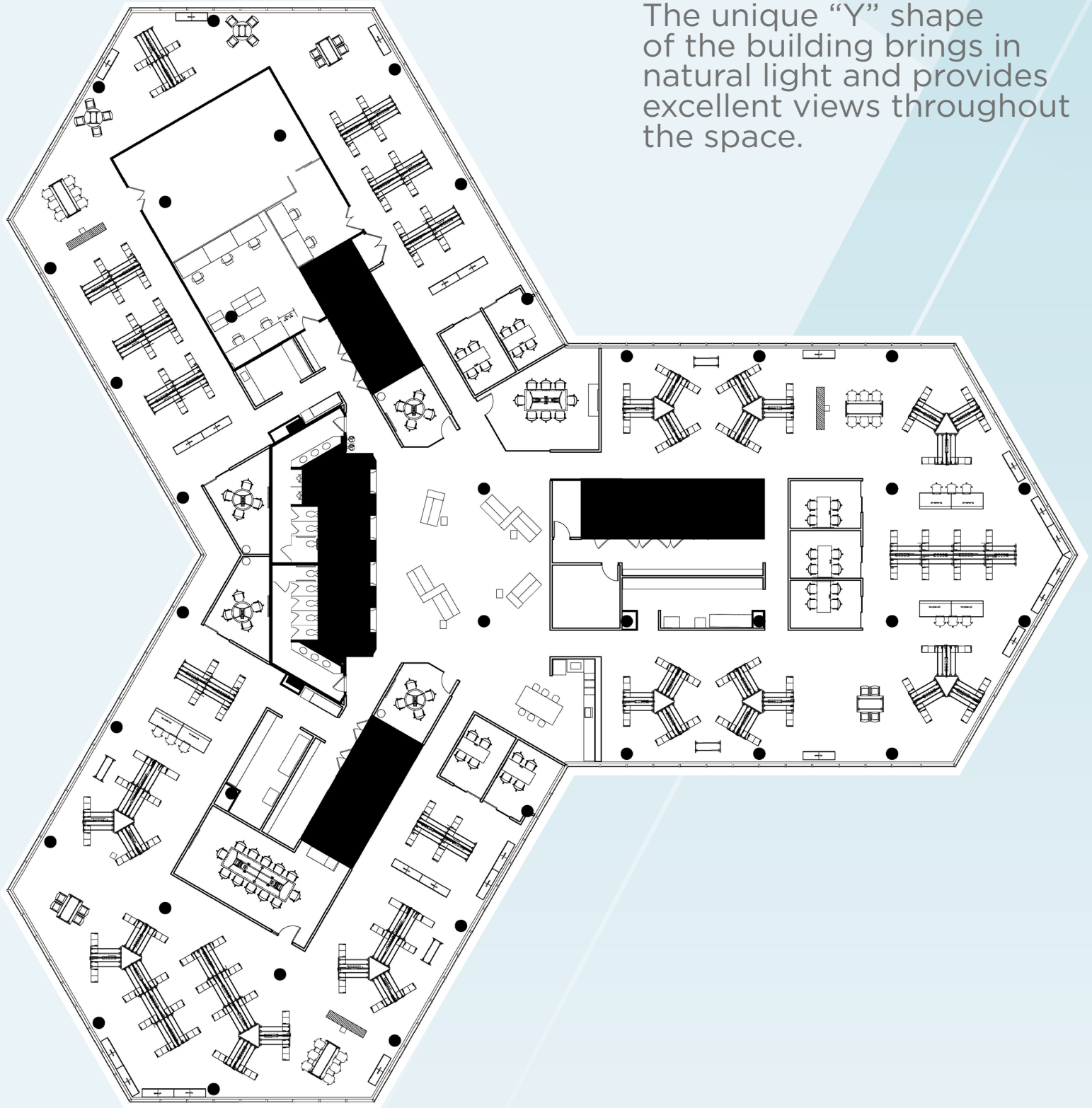
22,806 RSF - 3RD FLOOR

Interior private offices and conference rooms with Knoll workstations along the perimeter.

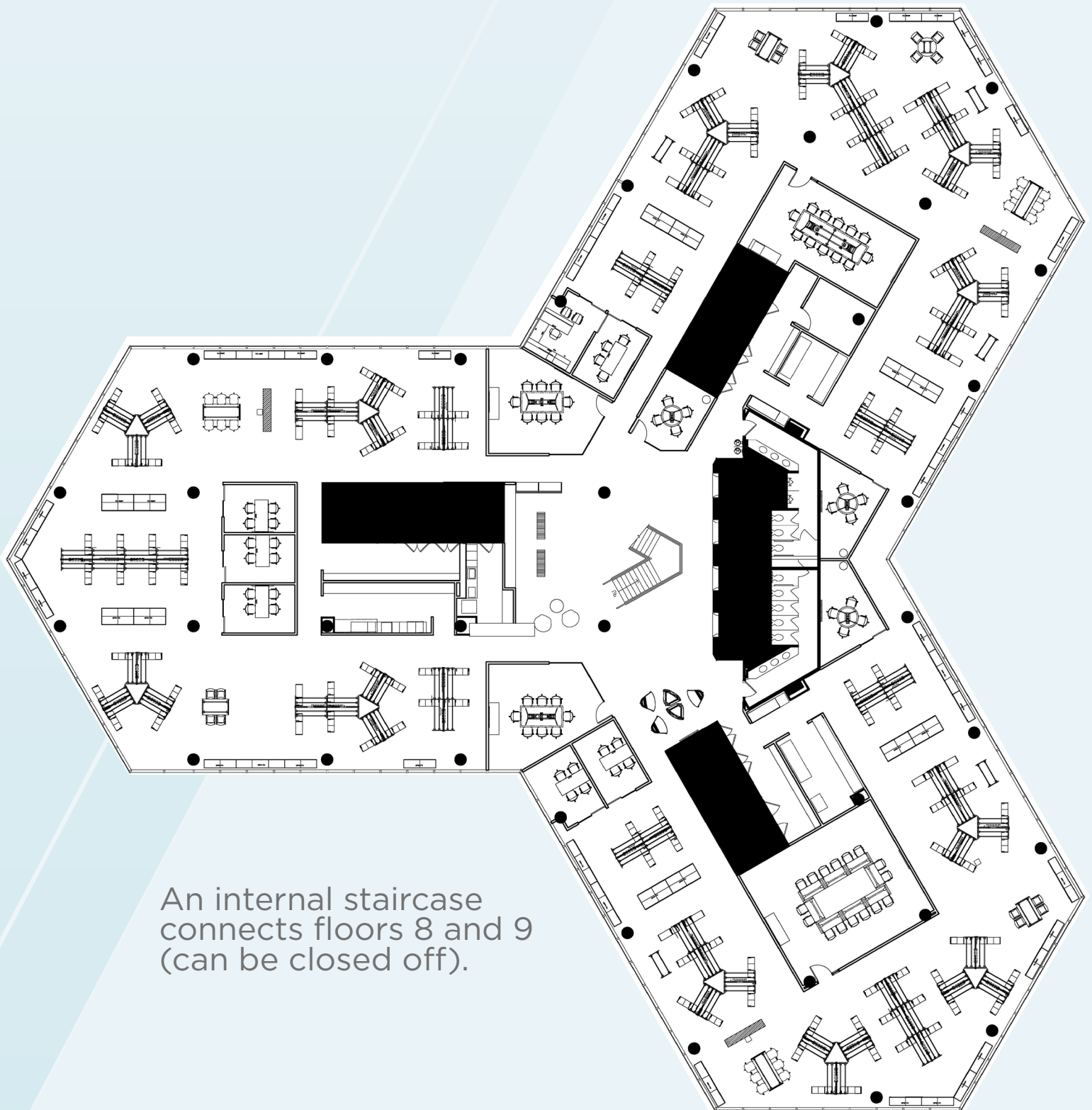


7TH FLOOR - 22,806 RSF

The unique “Y” shape of the building brings in natural light and provides excellent views throughout the space.

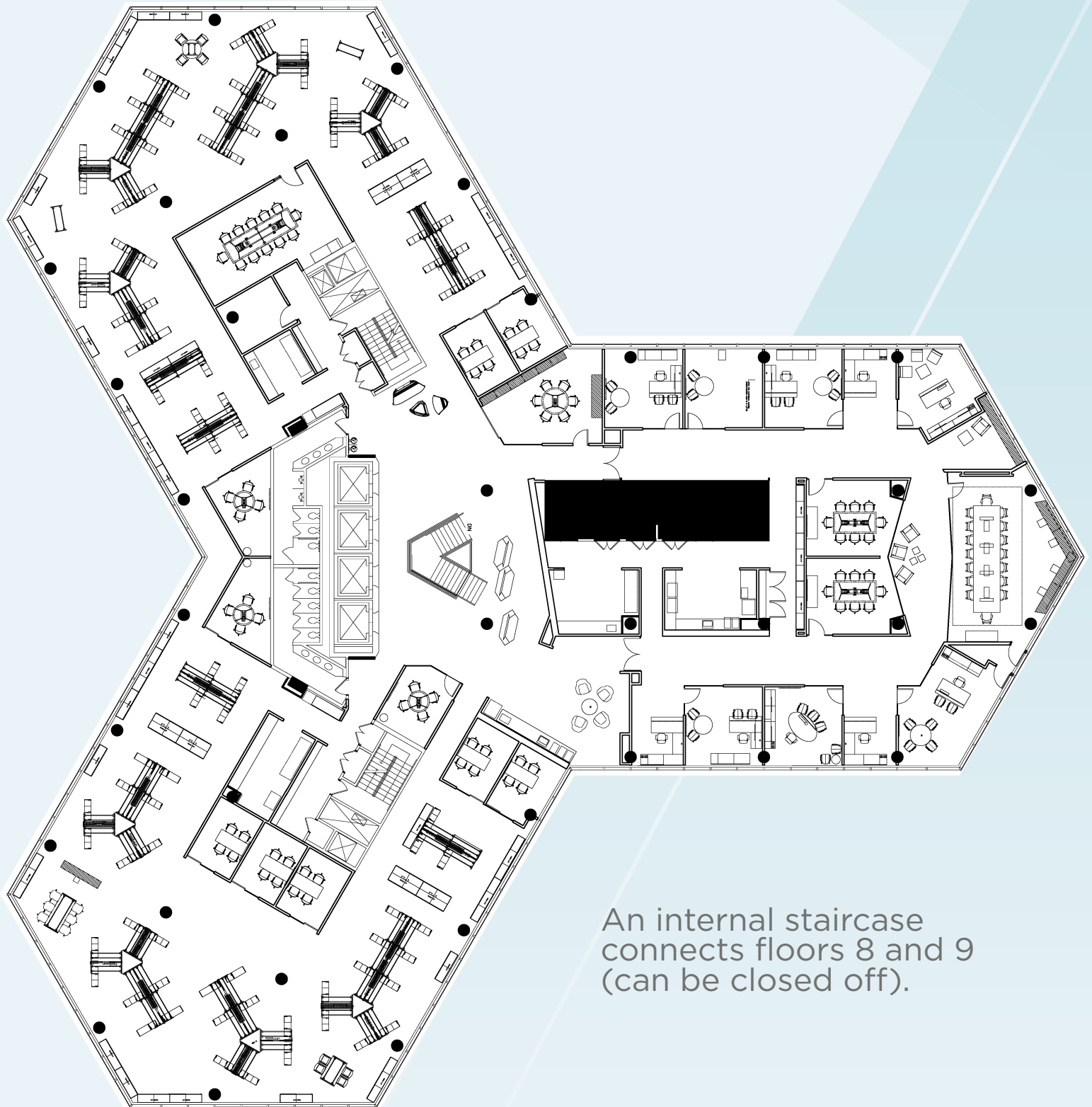


22,806 RSF - 8TH FLOOR



An internal staircase connects floors 8 and 9 (can be closed off).

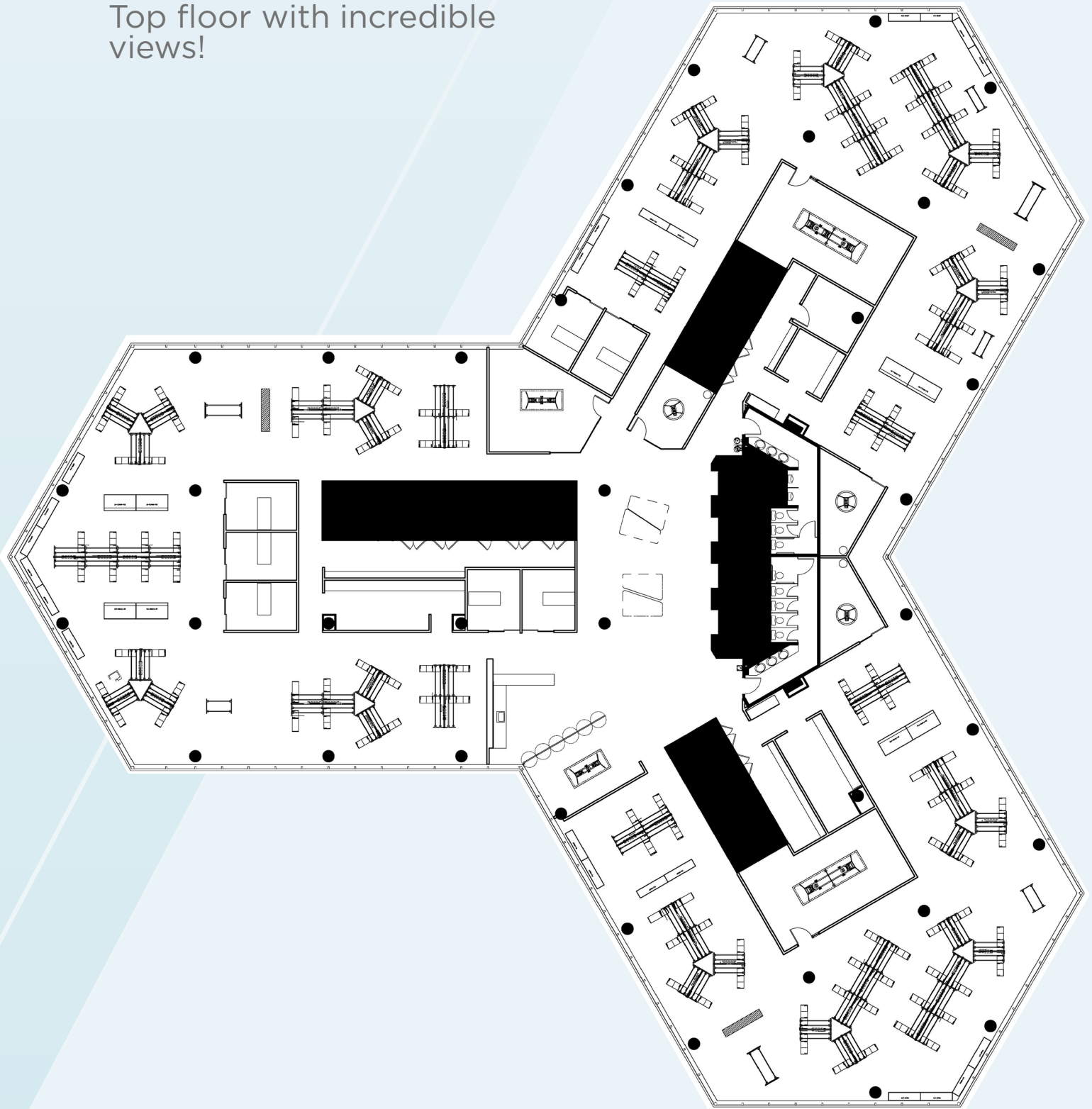
9TH FLOOR - 22,806 RSF



An internal staircase connects floors 8 and 9 (can be closed off).

22,806 RSF - 10TH FLOOR

Top floor with incredible views!





Sean Kropke

+1 847 361 9720

sean.kropke@cushwake.com

Dan Svachula

+1 773 490 8555

daniel.svachula@cushwake.com

www.viewmyspace.com/westbrook

